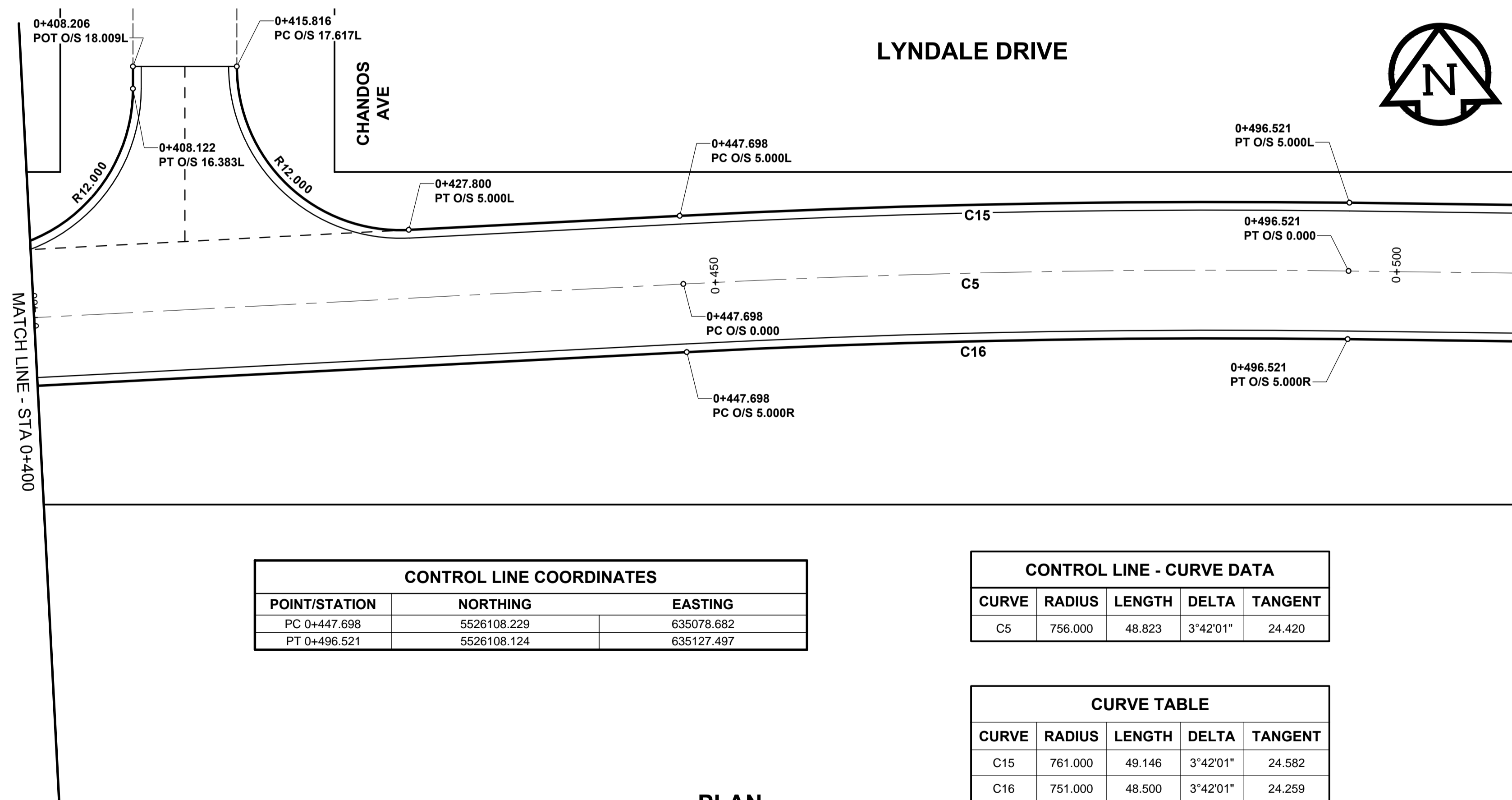


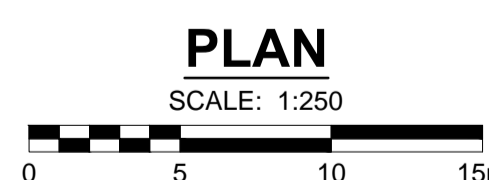
CONTROL LINE COORDINATES		
POINT/STATION	NORTHING	EASTING
PT 0+302.180	5526103.842	634933.231



CONTROL LINE COORDINATES		
POINT/STATION	NORTHING	EASTING
PC 0+447.698	5526108.229	635078.682
PT 0+496.521	5526108.124	635127.497

CONTROL LINE - CURVE DATA				
CURVE	RADIUS	LENGTH	DELTA	TANGENT
C5	756.000	48.823	3°42'01"	24.420

CURVE TABLE				
CURVE	RADIUS	LENGTH	DELTA	TANGENT
C15	761.000	49.146	3°42'01"	24.582
C16	751.000	48.500	3°42'01"	24.259



**METRIC**  
 WHOLE NUMBERS INDICATE MILLIMETRES  
 DECIMALIZED NUMBERS INDICATE METRES

EXISTING	NEW	EXISTING	NEW	EXISTING	NEW	EXISTING	NEW

**LOCATION APPROVED**  
 UNDERGROUND STRUCTURES

DATE

**NOTE:**  
 LOCATION OF UNDERGROUND STRUCTURES AS SHOWN ARE BASED ON THE BEST INFORMATION AVAILABLE BUT NO GUARANTEE IS GIVEN THAT ALL EXISTING UTILITIES ARE SHOWN OR THAT THE GIVEN LOCATIONS ARE EXACT. CONFIRMATION OF EXISTENCE AND EXACT LOCATION OF ALL SERVICES MUST BE OBTAINED FROM THE INDIVIDUAL UTILITIES BEFORE PROCEEDING WITH CONSTRUCTION.

No.	REVISIONS	DATE	BY
C	ISSUED FOR TENDER	16/09/29	JGK
B	ISSUED FOR FINAL REVIEW	16/09/13	JGK
A	ISSUED FOR 75% REVIEW	16/08/17	JGK

DESIGNED BY	CHECKED BY
JGK	RPB
DRAWN BY	APPROVED BY
DID	BWB
DATE	DATE
16/09/06	

PROFESSIONAL'S SEAL

PROVINCE OF MANITOBA

**J.G. KENNEDY**  
 Member  
 22326

REGISTERED PROFESSIONAL ENGINEER

CONSULTANT FILE NAME  
 5160047-Lyndale-HG-24.dwg

**THE CITY OF WINNIPEG**  
 PUBLIC WORKS DEPARTMENT  
 ENGINEERING DIVISION

**LYNDALE DRIVE RIVERBANK STABILIZATION AND ASSOCIATED WORKS**  
 MONCK AVENUE TO GAUVIN STREET  
 ROAD WORKS  
 HORIZONTAL GEOMETRY  
 STA 0+290 TO STA 0+510

CITY DRAWING NUMBER  
 RW751-2016-24

SHEET 24 OF 32

DRAWING No. 24 REV C

**APEGM**  
 Certificate of Authorization  
 MORRISON HERSHFIELD  
 No. 1736

BID OPPORTUNITY No. 721-2016