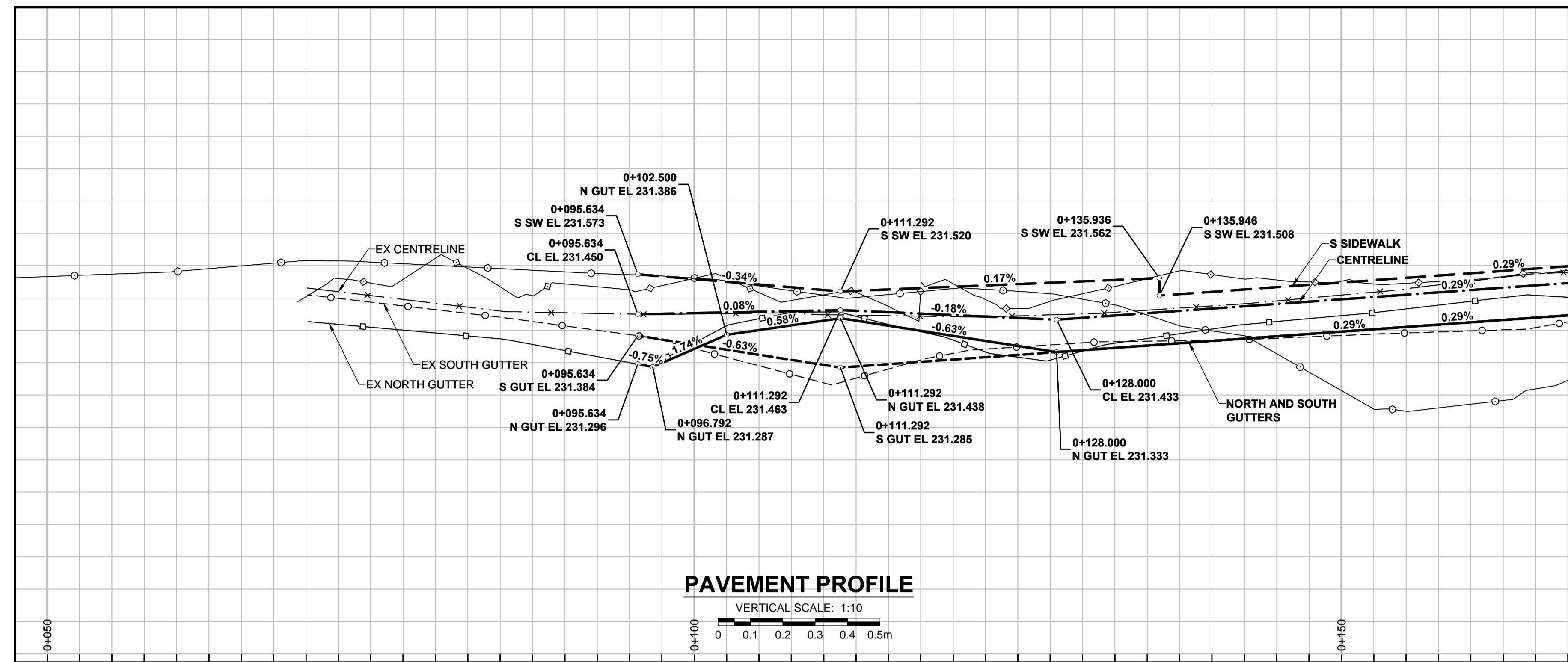


232.000  
231.600  
231.200  
230.800

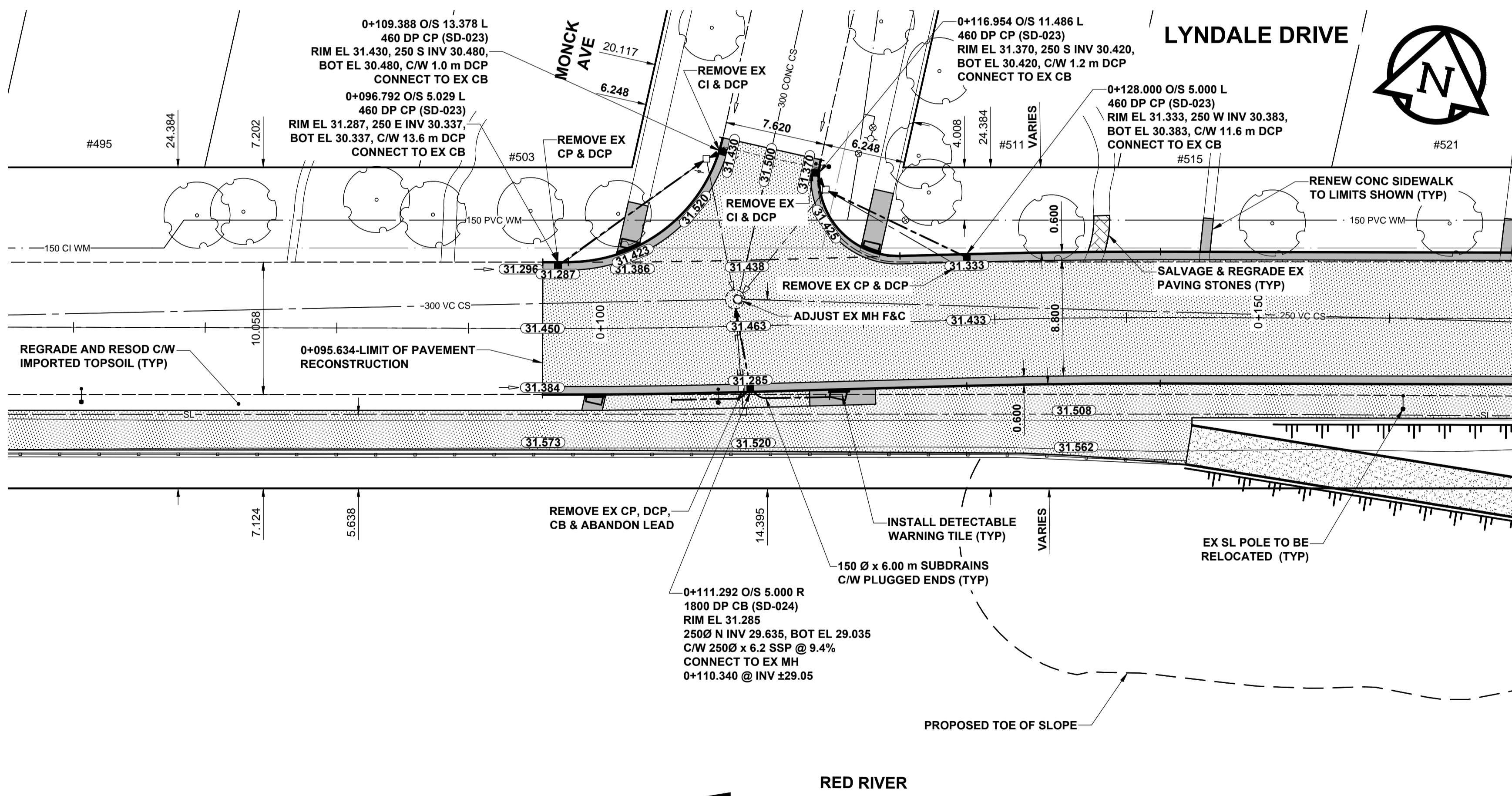
232.000  
231.600  
231.200  
230.800



**PAVEMENT PROFILE**

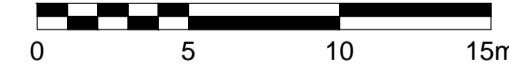
VERTICAL SCALE: 1:10  
0 0.1 0.2 0.3 0.4 0.5m

CHAINAGE ALONG C  
PROPOSED PAVEMENT

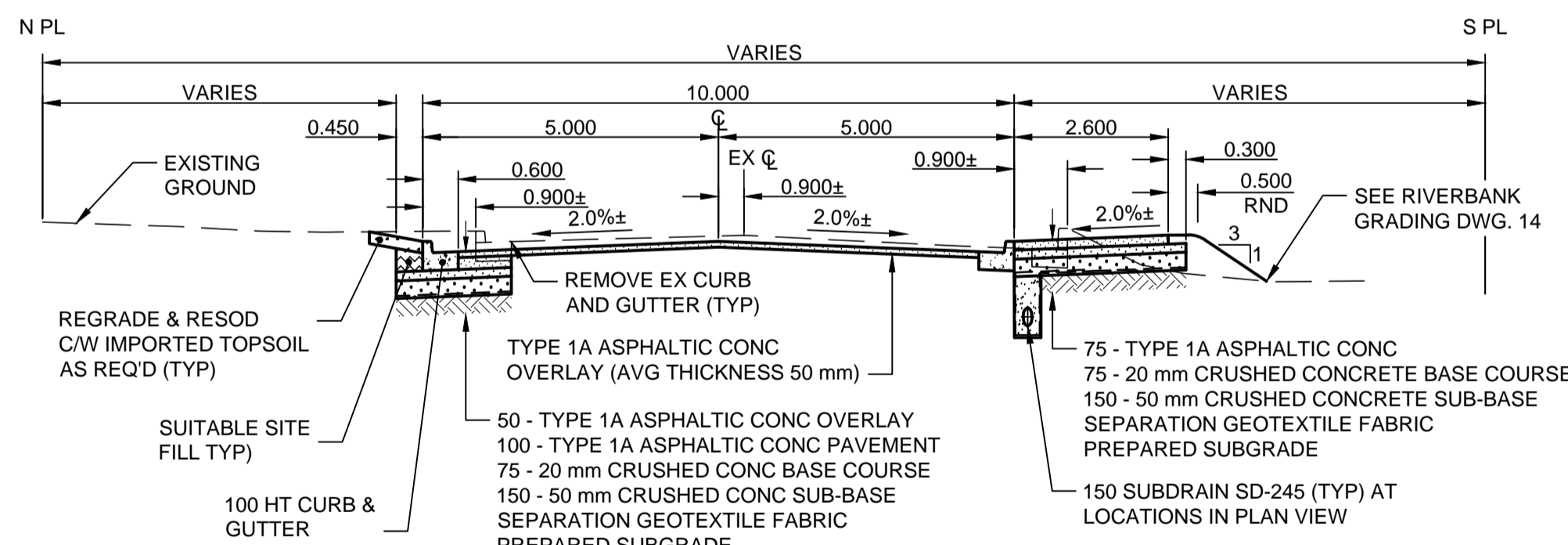


**PLAN**

SCALE: 1:250



- NOTES**
1. ADJUST MH AND CB RIMS TO NEW GRADES.
  2. CONTRACTOR TO REGRADE/RENEW EXST PRIVATE SIDEWALKS TO LIMITS AS SHOWN. SIDEWALKS TO BE RENEWED WITH CONCRETE UNLESS NOTED OTHERWISE.
  3. CONTRACTOR TO TAKE PRECAUTIONARY STEPS AS OUTLINED IN THE SPECIFICATIONS TO PROTECT EXISTING TREES WITHIN THE LIMITS OF CONSTRUCTION FROM DAMAGE FROM CONSTRUCTION ACTIVITIES.
  4. MODIFIED BARRIER CURB TO BE CONSTRUCTED AT ALL INTERSECTION RADII, BACK LANE RADII AND BULLNOSES.
  5. CONTRACTOR TO CONFIRM THE LOCATION OF ALL UTILITIES/SERVICES IN THE FIELD PRIOR TO CONSTRUCTION.
  6. ADD 200.000m TO ABBREVIATED ELEVATIONS TO OBTAIN GEODETIC ELEVATIONS.
  7. CB SD-024 OFFSETS ARE DIMENSIONED TO BOC. CB SD-025 OFFSETS ARE DIMENSIONED O/C.
  8. ALL DIMENSIONS TO BACK OF CURB.



**PAVEMENT SECTION**

ASPHALT PAVEMENT STRUCTURE  
TYPICAL  
SCALE: HOR 1:100 VER 1:50

**METRIC**  
WHOLE NUMBERS INDICATE MILLIMETRES  
DECIMALIZED NUMBERS INDICATE METRES

|  |                         |  |                       |  |                      |
|--|-------------------------|--|-----------------------|--|----------------------|
|  | GAS                     |  | MANHOLE               |  | CONCRETE PAVEMENT    |
|  | MTS HANDWELL/PEDESTAL   |  | CATCH BASIN/CATCH PIT |  | CONC SIDEWALK/MEDIAN |
|  | HYDRO HANDWELL/CABINET  |  | CURB INLET WITH BOX   |  | ASPHALT PAVEMENT     |
|  | CATV/FIBRE OPTIC        |  | TREE                  |  | PAVING STONE         |
|  | TRAFFIC SIGNALS/PIT     |  | TEST HOLE             |  | GRAVEL               |
|  | LAND DRAINAGE SEWER     |  | PROPERTY LINE         |  | RAMP CURB            |
|  | SANITARY/COMBINED SEWER |  | SURVEY BAR            |  | PLANING/REMOVAL      |
|  | CB LEAD/SSP/DCP         |  | FENCE                 |  |                      |
|  | WATERMAIN               |  | BOC/EDGE OF PAVEMENT  |  |                      |
|  | SUBDRAIN                |  | ELEVATION (33.333)    |  |                      |
|  | DITCH                   |  | TRAFFIC SIGN          |  |                      |
|  | EXISTING                |  | LEGEND - PLAN         |  | EXISTING             |
|  | NEW                     |  | LEGEND - PLAN         |  | NEW                  |

**LOCATION APPROVED**  
UNDERGROUND STRUCTURES

DATE: \_\_\_\_\_

**NOTE:**  
LOCATION OF UNDERGROUND STRUCTURES AS SHOWN ARE BASED ON THE BEST INFORMATION AVAILABLE BUT NO GUARANTEE IS GIVEN THAT ALL EXISTING UTILITIES ARE SHOWN OR THAT THE GIVEN LOCATIONS ARE EXACT. CONFIRMATION OF EXISTENCE AND EXACT LOCATION OF ALL SERVICES MUST BE OBTAINED FROM THE INDIVIDUAL UTILITIES BEFORE PROCEEDING WITH CONSTRUCTION.

|           |                                      |
|-----------|--------------------------------------|
| BM 34-004 | ELEV 229.873m                        |
| C         | ISSUED FOR TENDER 16/09/29 JGK       |
| B         | ISSUED FOR FINAL REVIEW 16/09/13 JGK |
| A         | ISSUED FOR 75% REVIEW 16/08/17 JGK   |
| No.       | REVISIONS YY/MM/DD BY DATE           |

|                           |               |
|---------------------------|---------------|
|                           |               |
| DESIGNED BY               | JGK           |
| CHECKED BY                | RPB           |
| DRAWN BY                  | DID           |
| APPROVED BY               | BWB           |
| HOR SCALE                 | 1:250         |
| VERT SCALE                | 1:10          |
| RELEASED FOR CONSTRUCTION | DATE 16/09/06 |

PROFESSIONAL'S SEAL  
PROVINCE OF MANITOBA  
**J.G. KENNEDY**  
Member  
22326  
REGISTERED PROFESSIONAL ENGINEER  
CONSULTANT FILE NAME  
5160047-Lyndale-PP-27.dwg

**THE CITY OF WINNIPEG**  
PUBLIC WORKS DEPARTMENT  
ENGINEERING DIVISION

**LYNDALE DRIVE RIVERBANK STABILIZATION AND ASSOCIATED WORKS**  
MONCK AVENUE TO GAUVIN STREET  
ROAD WORKS  
HORIZONTAL AND VERTICAL ALIGNMENT  
STA 0+055 TO STA 0+170

CITY DRAWING NUMBER: RW751-2016-27  
SHEET 27 OF 32  
DRAWING No. 27 REV C

BID OPPORTUNITY No. 721-2016