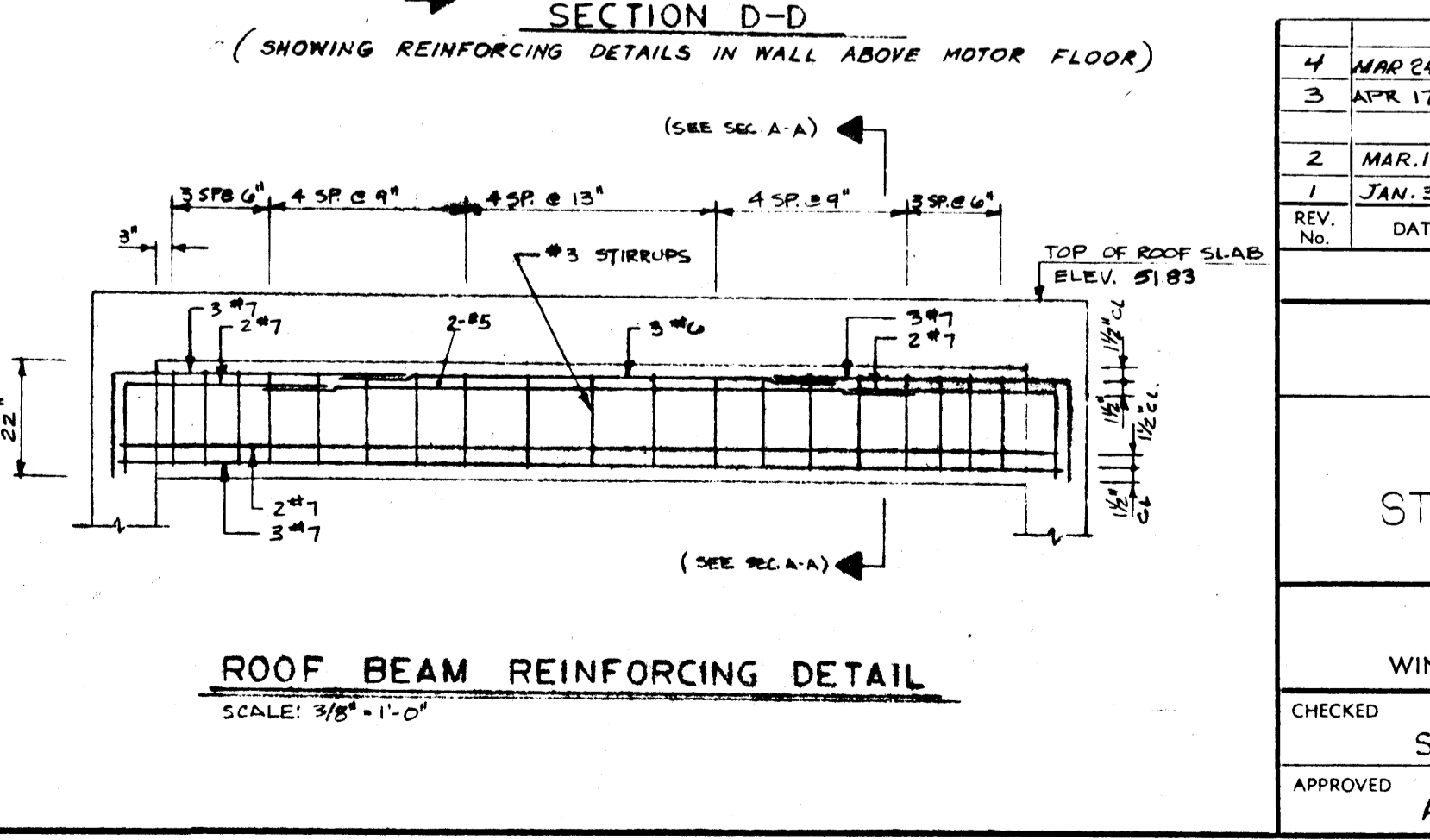
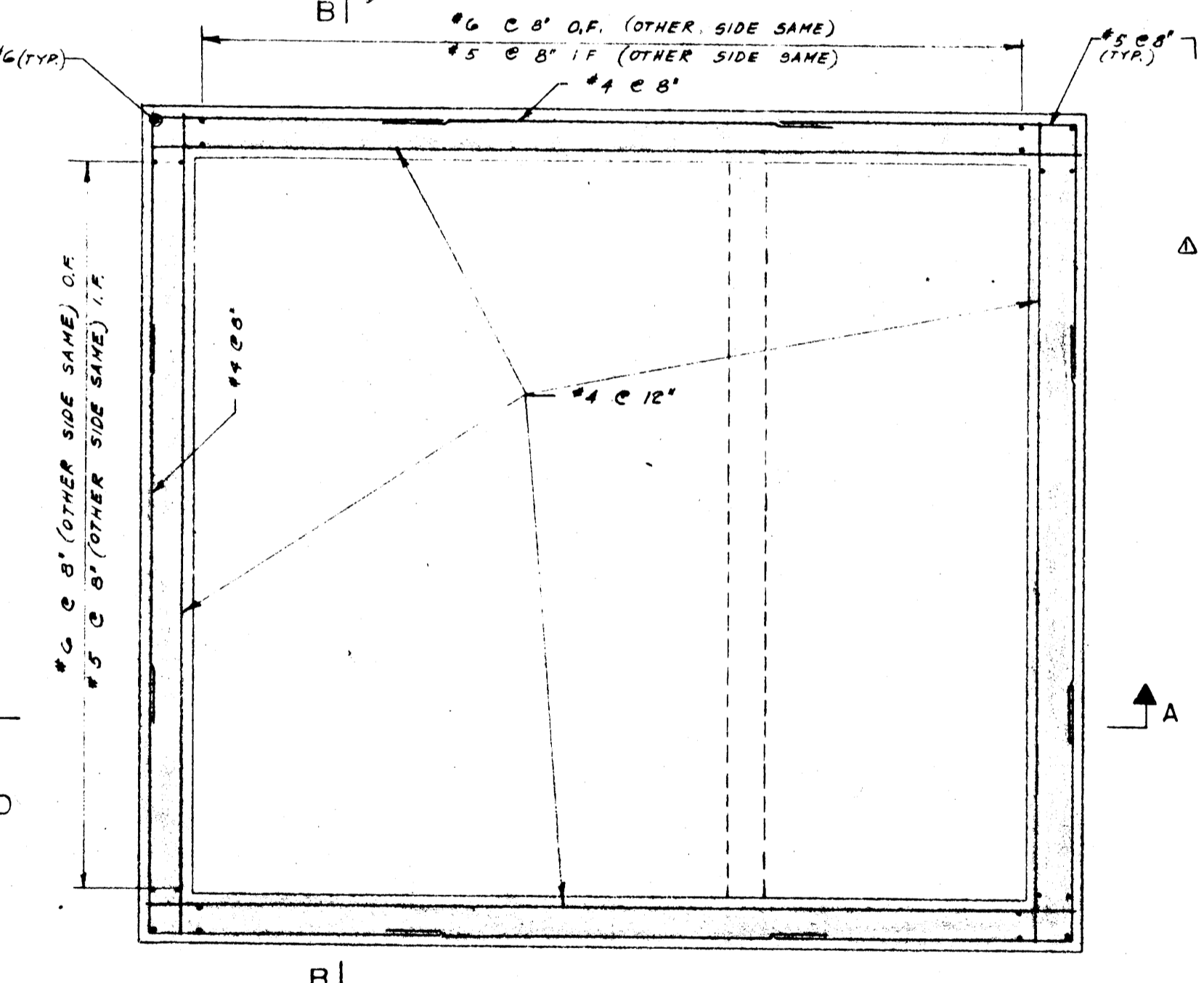
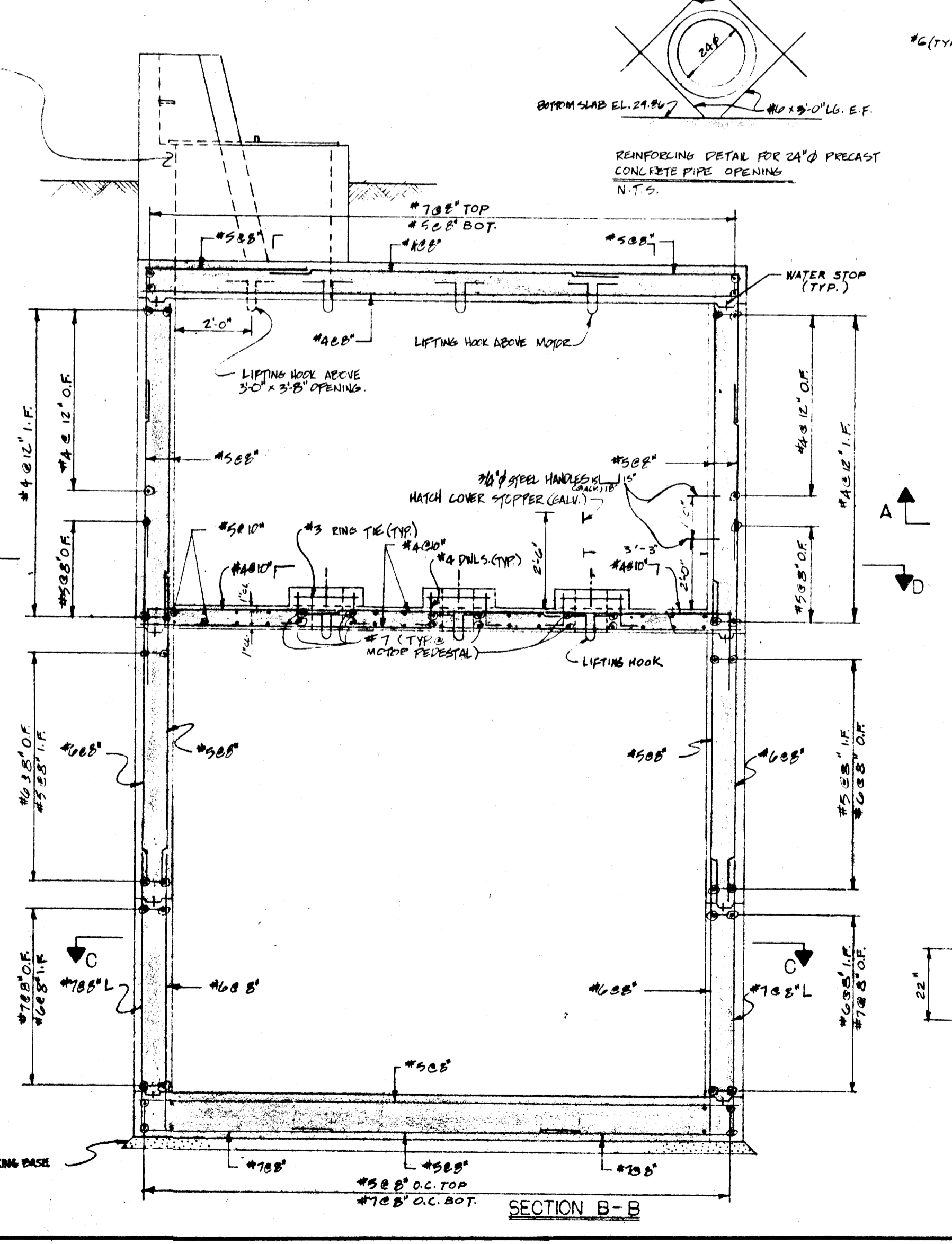
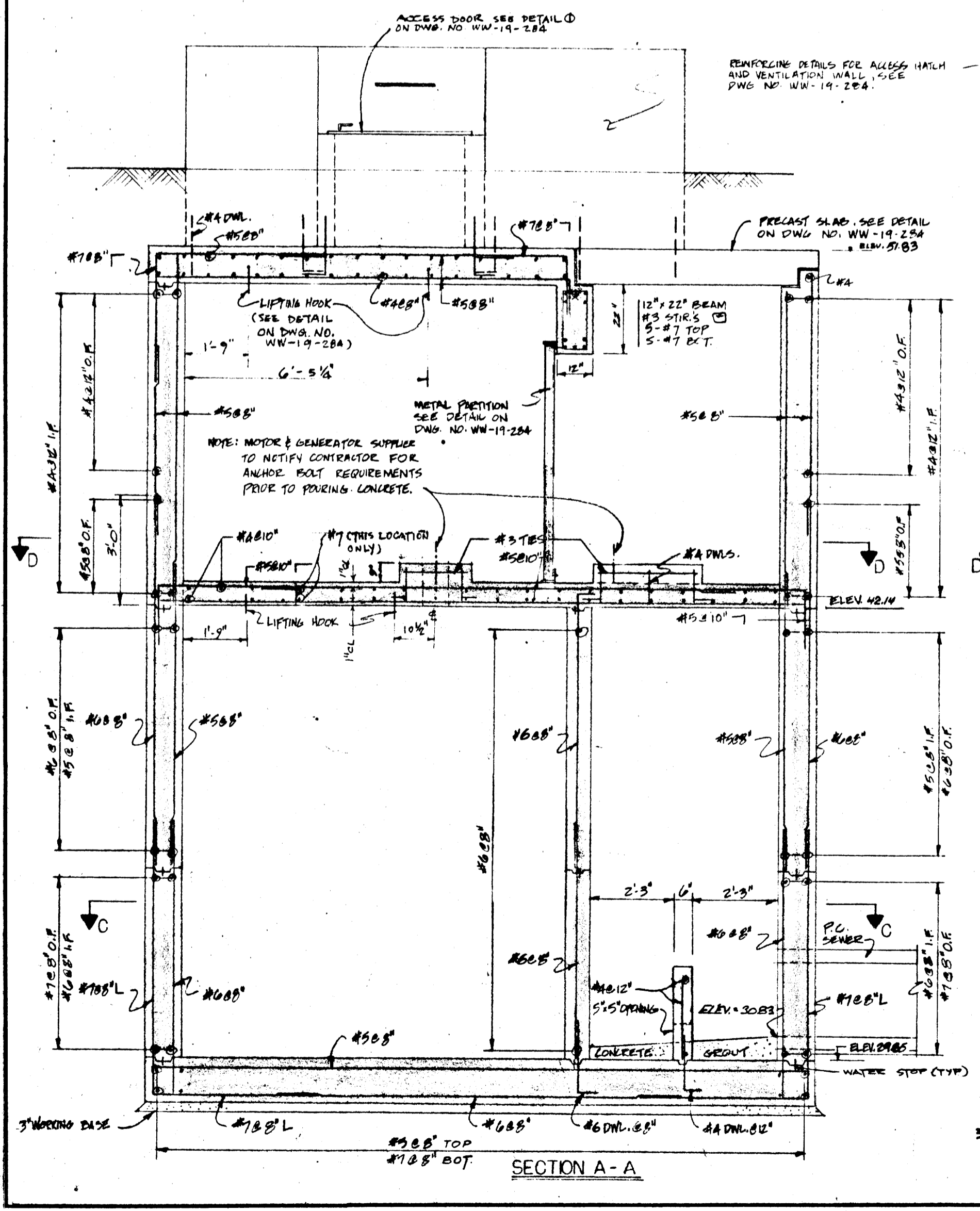
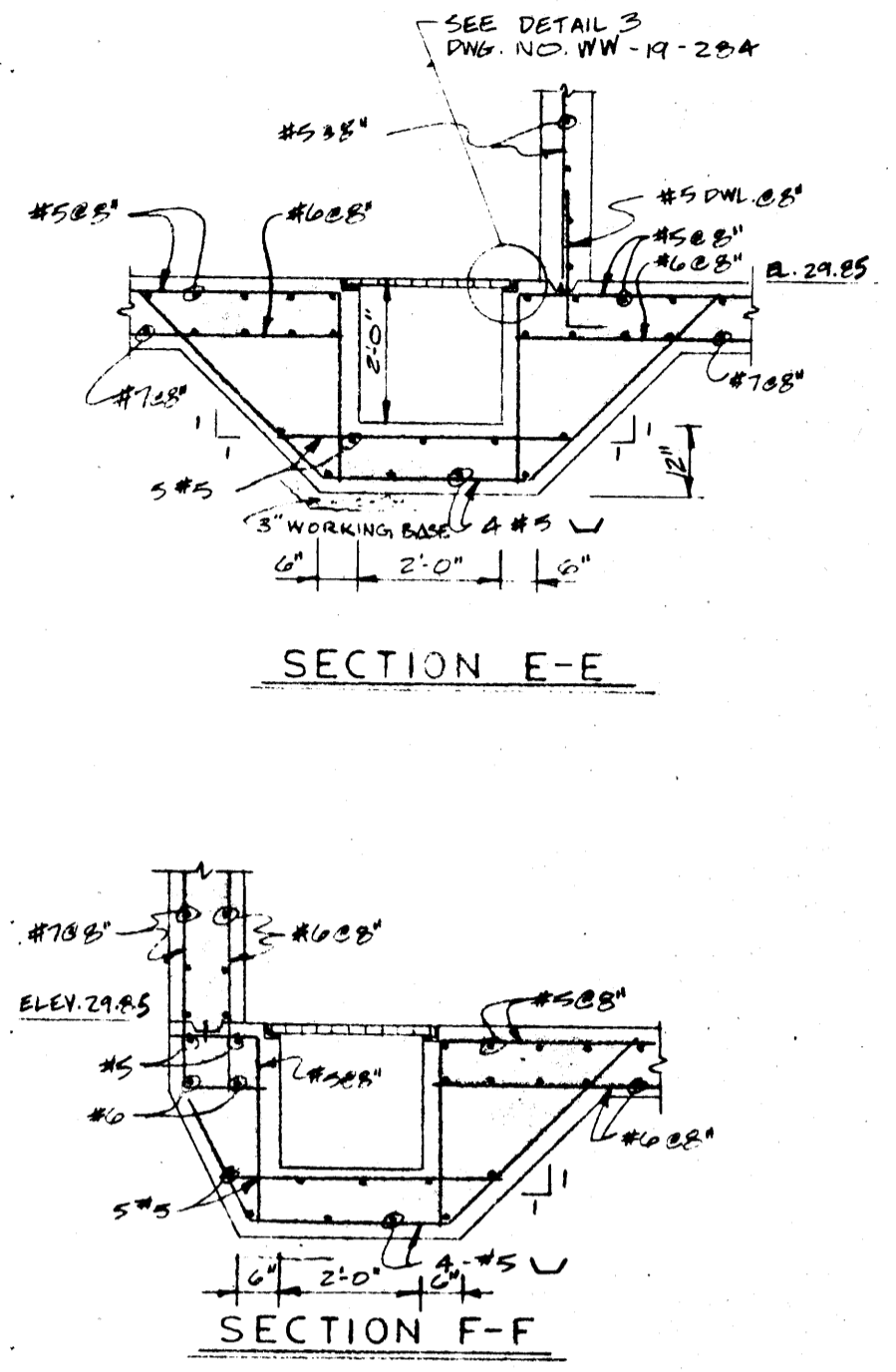
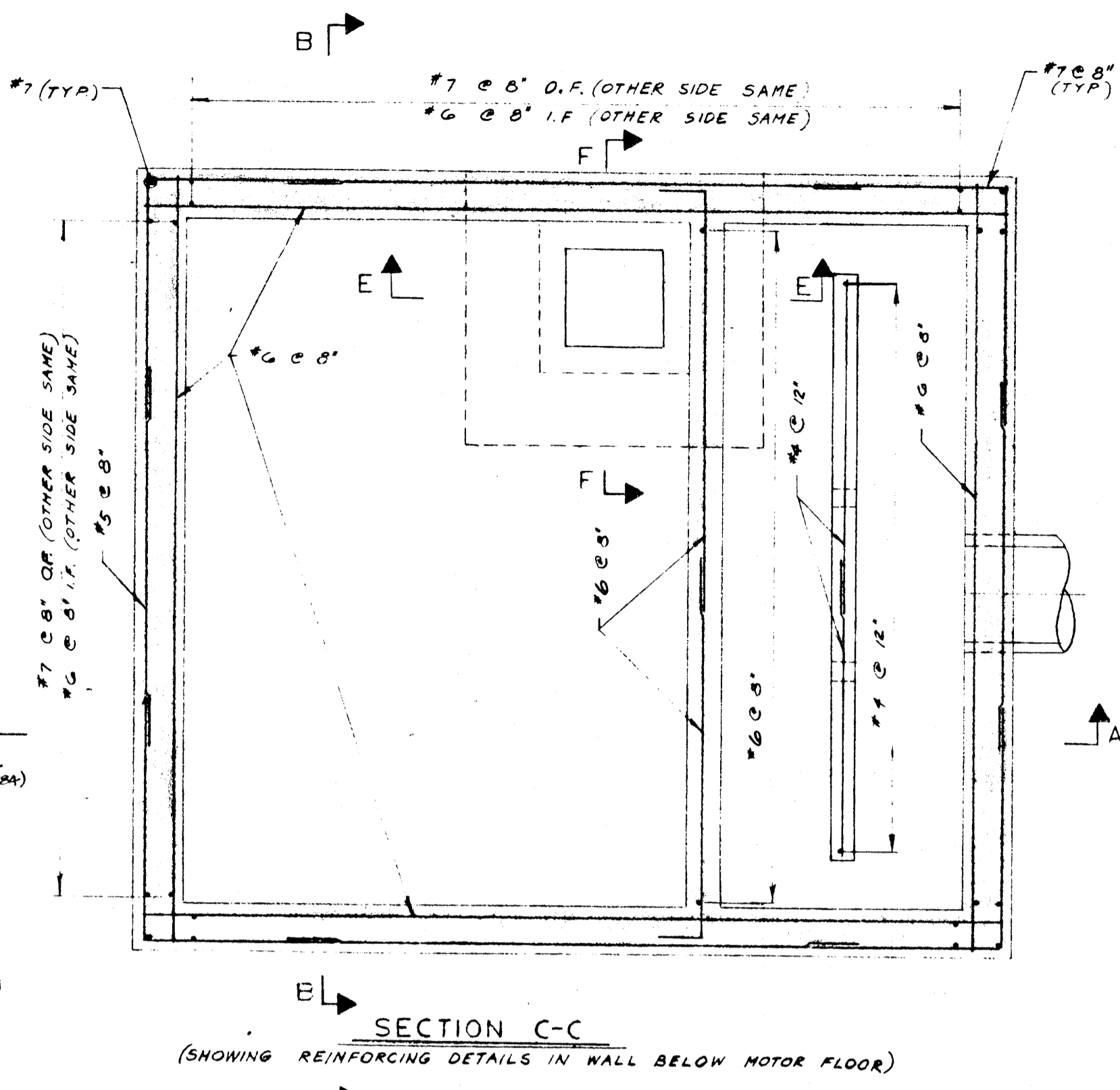
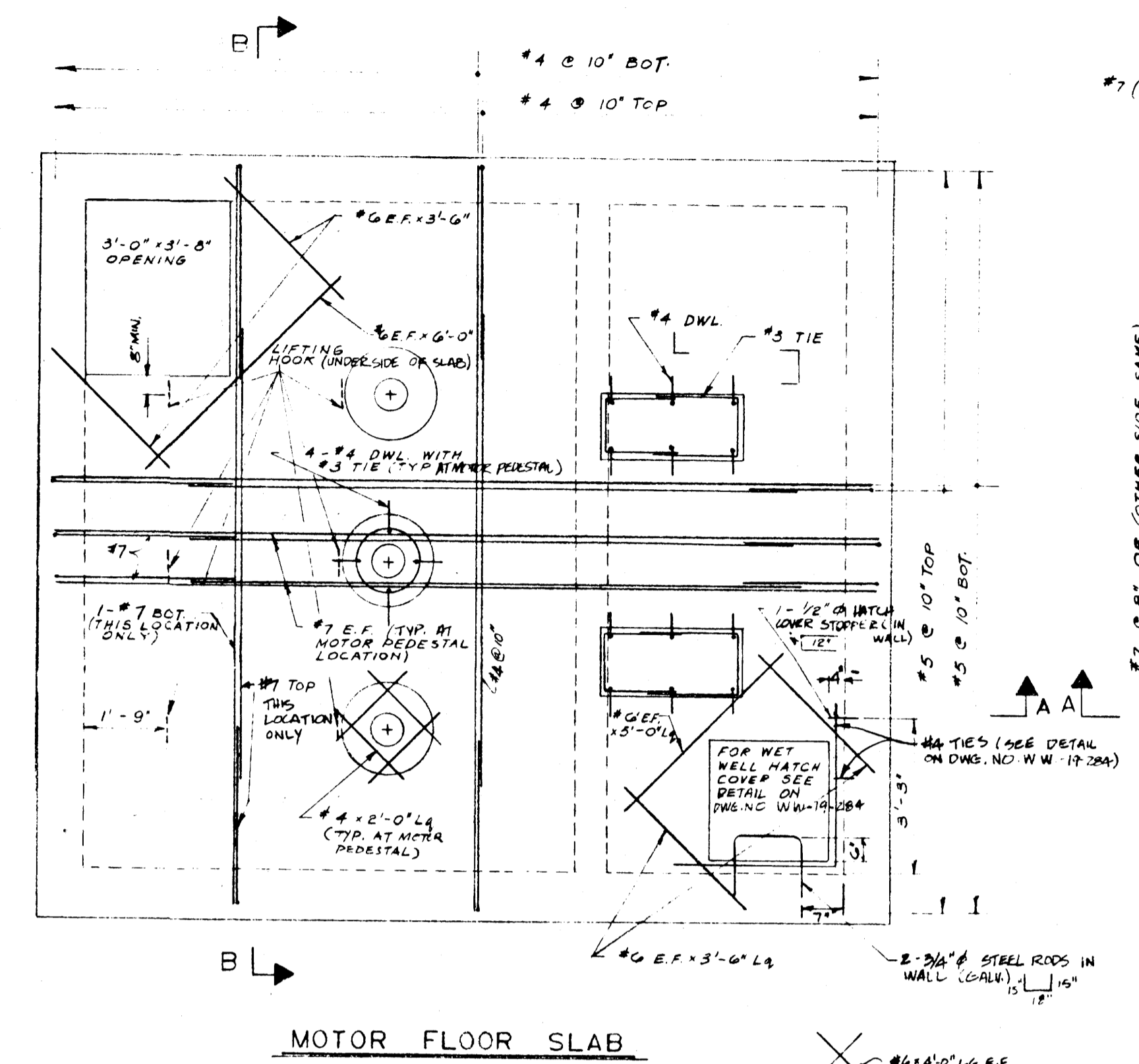
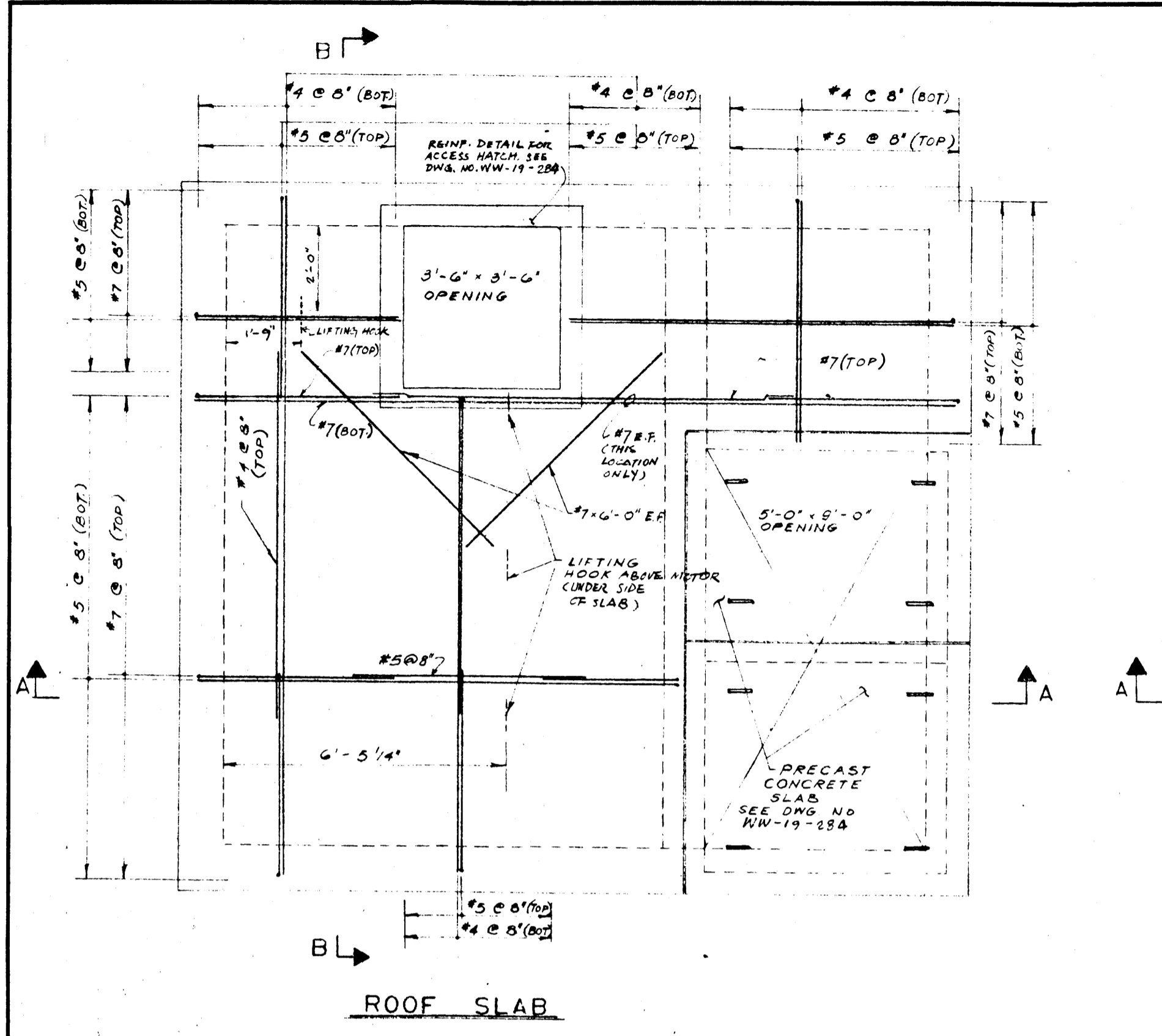


FILE # LD10193



- GENERAL NOTES**
- 1) CONCRETE MIN. COMPRESSIVE STRENGTH 3000 P.S.I. (LEAD MIN. CONCRETE IS 3000 P.S.I.)
 - 2) CONCRETE CONTAINS SULPHATE RESISTANT TYPE 'D' CEMENT
 - 3) CONCRETE MAX. SIZE OF AGGREGATE IS 1" MAX. SLUMP IS 3"
 - 4) REINFORCING STEEL IS OF INTERMEDIATE GRADE DEFORMED BARS WITH MIN. f_y = 40000 P.S.I.
 - 5) CONCRETE PROTECTION FOR REINFORCING STEEL IS 1" EXCEPT AS NOTED
 - 6) STEEL REINFORCING IS IN ACCORDANCE WITH LATEST A.C.I. DETAILING MANUAL.



REV. No.	DATE	DESCRIPTION	BY
4	MAR 24/80	REVISED TO AS-BUILT	M.M.
3	APR 17/78	REVISED BAR SIZES FOR INTERIOR WALL BETWEEN PUMP ROOM AND WET WELL	R.J.
2	MAR 15/78	REVISED REINFORCING LOCATION DESIGNATIONS	M.M.
1	JAN 30/78	TRASH RACK DELETED, WET WELL GENERAL NOTES REVISED	M.M.

REVISIONS FILE # LD10193

THE CITY OF WINNIPEG
WATERWORKS, WASTE AND DISPOSAL DMSION

LARCHDALE PUMP STATION
STRUCTURAL SECTIONS AND DETAILS

TEMPLETON ENGINEERING COMPANY
PROFESSIONAL ENGINEERS
WINNIPEG MANITOBA

CHECKED S.L.	DRAWN J.K. & I.F.	SCALE 3/8" = 1'-0"
APPROVED A.M.	DATE JAN 20, 1978	DWG. No. WW-18-284

LD-428