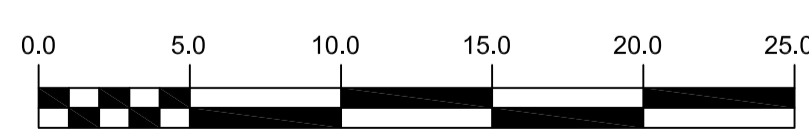
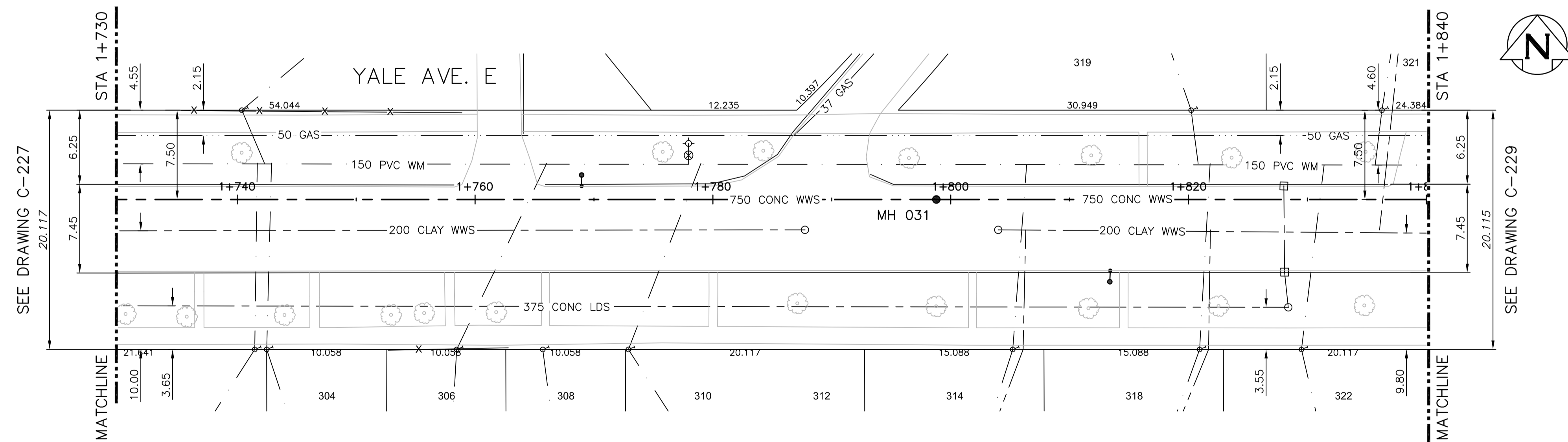


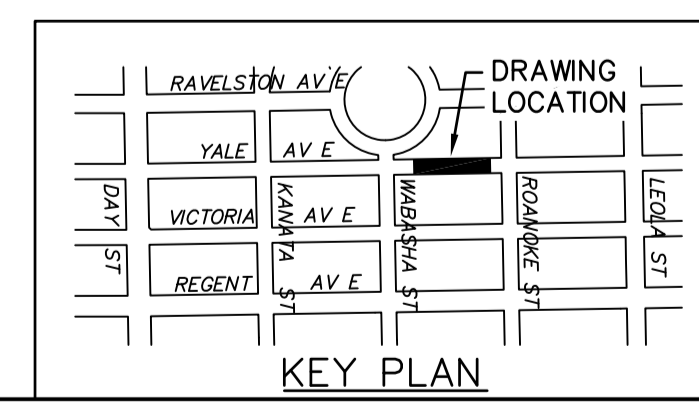
NOTE: CHAINAGES SHOWN ARE ALONG CL OF PROPOSED PIPE

**WARNING**  
 IF POWER EQUIPMENT OR EXPLOSIVES ARE TO BE USED FOR EXCAVATION ON THIS PROJECT THE CONTRACTOR MUST:  
 1) NOTIFY THE GAS COMPANY OF THE PROPOSED LOCATION OF EXCAVATION.  
 2) TAKE PRECAUTION TO AVOID DAMAGE TO GAS COMPANY INSTALLATIONS. SEE PROVINCIAL REGULATION 210/72 FOR DETAILS.

- CONSTRUCTION NOTES:**
- SEWER AND WATER SERVICES SHOWN ON DRAWING ARE APPROXIMATE ONLY.
  - LOCATION OF ALL SEWER AND WATER LINES TO BE CONFIRMED IN FIELD.
  - INSTALL NEW SEWER BY TRENCHLESS METHODS, UNLESS OTHERWISE NOTED.
  - FRONT ACCESS TO ALL YALE AVENUE PROPERTIES TO BE MAINTAINED AT ALL TIMES DURING CONSTRUCTION PERIOD.



**APEGM**  
 Certificate of Authorization  
 CH2M HILL Canada Ltd.  
 No. 1441



200 WM	WATERMAIN	200 WM	SL - HYDRO	150 WM	WATERMAIN	150 WM
⊕	HYDRANT	⊕	MTS	⊕	HYDRANT	⊕
⊙	VALVE	⊙	TRAFFIC SIGNALS	⊙	VALVE	⊙
525 LDS	LAND DRAINAGE SEWER	525 LDS	50 GAS	300 LOS	LAND DRAINAGE SEWER	300 LOS
375 WWS	WASTEWATER SEWER	375 WWS	50 GAS	250 WWS	WASTEWATER SEWER	250 WWS
○	MANHOLE	●	⊗	⊗	⊗	⊗
□	CATCH BASIN	■	POLE - HYDRO, MTS	⊕	POLE - HYDRO, MTS	⊕
▽	CURB INLET	▾	CURB STOP	⊕	CURB STOP	⊕
⊕	JUNCTIONS	⊕	GUY ANCHOR	⊕	GUY ANCHOR	⊕
⊕	CULVERT	⊕	LIGHT STANDARD	⊕	LIGHT STANDARD	⊕
⊕	ANODE	⊕	TREE	⊕	TREE	⊕
EXISTING	LEGEND-PLAN	PROPOSED	EXISTING	LEGEND-PLAN	PROPOSED	EXISTING
---	LEGEND-PROFILE	---	---	---	---	---

**LOCATION APPROVED UNDERGROUND STRUCTURES**

SUPV. U/C STRUCTURES COMMITTEE DATE

NOTE:  
 LOCATION OF UNDERGROUND STRUCTURES AS SHOWN ARE BASED ON THE BEST INFORMATION AVAILABLE BUT NO GUARANTEE IS GIVEN THAT ALL EXISTING UTILITIES ARE SHOWN OR THAT THE GIVEN LOCATIONS ARE EXACT. CONFIRMATION OF EXISTENCE AND EXACT LOCATION OF ALL SERVICES MUST BE OBTAINED FROM THE INDIVIDUAL UTILITIES BEFORE PROCEEDING WITH CONSTRUCTION.

B.M. ELEV.

CONSTRUCTION COMPLETION DATE: YYYY MM DD

DESIGNED BY	MAF	CHECKED BY	MD
DRAWN BY	JBC	APPROVED BY	ES
SCALE:	HORIZONTAL 1:250	RELEASED FOR CONSTRUCTION	KZ
DATE	2016-09-15	DATE	2016-09-15

ISSUED FOR TENDER 09/16 JBC

ENGINEER'S SEAL  
 PROVINCE OF MANITOBA  
 Sept 14, 2016  
 S.S.D.  
 GORDON  
 Member  
 25524  
 REGISTERED PROFESSIONAL ENGINEER  
 CONSULTANT DRAWING NUMBER  
 C-228

**THE CITY OF WINNIPEG**  
 WATER AND WASTE DEPARTMENT  
 ENGINEERING DIVISION

TRANSCONA SEWER RELIEF WORKS  
 CONTRACT NO. 2  
 YALE AVE E  
 FROM STA 1+730 TO 1+840

SHEET 11 OF 22  
 CITY DRAWING NUMBER  
 LD-7909