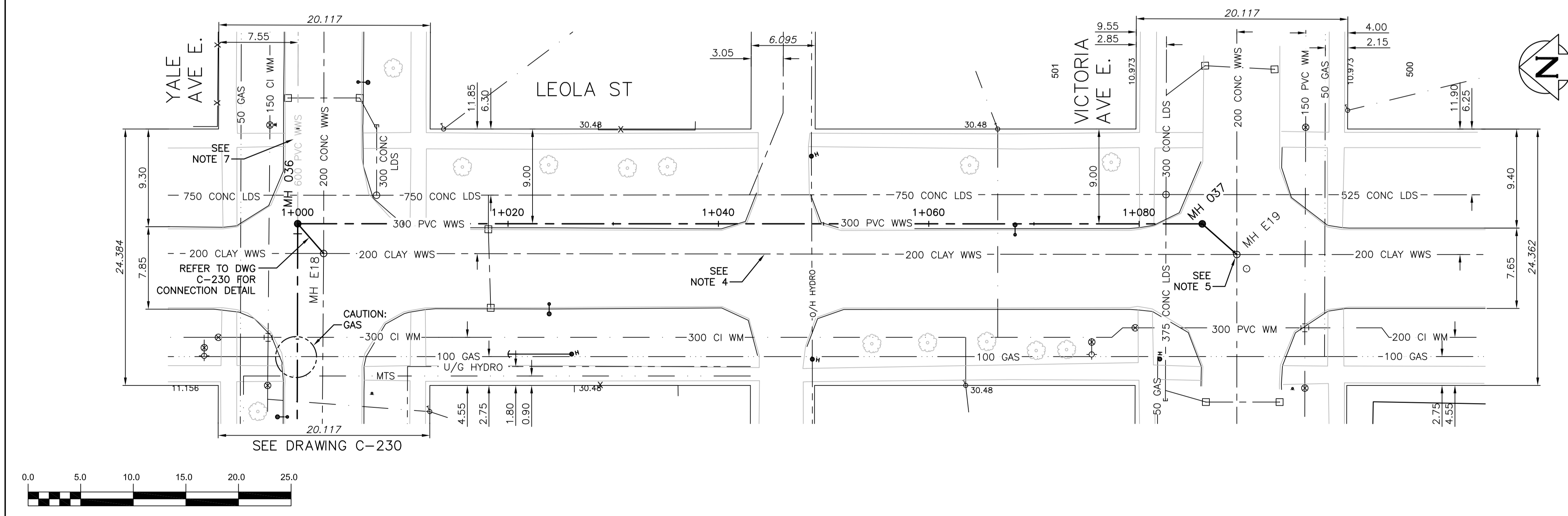


NOTE: CHAINAGES SHOWN ARE ALONG CL OF PROPOSED PIPE

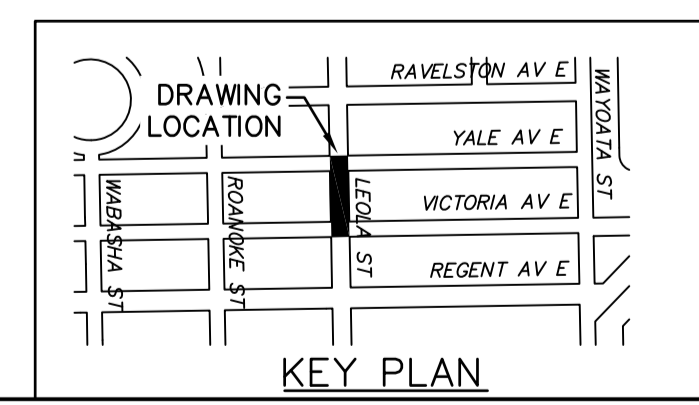
WARNING
 IF POWER EQUIPMENT OR EXPLOSIVES ARE TO BE USED FOR EXCAVATION ON THIS PROJECT THE CONTRACTOR MUST:
 1) NOTIFY THE GAS COMPANY OF THE PROPOSED LOCATION OF EXCAVATION.
 2) TAKE PRECAUTION TO AVOID DAMAGE TO GAS COMPANY INSTALLATIONS. SEE PROVINCIAL REGULATION 210/72 FOR DETAILS.

- CONSTRUCTION NOTES:**
- SEWER AND WATER SERVICES SHOWN ON DRAWING ARE APPROXIMATE ONLY.
 - LOCATION OF ALL SEWER AND WATER LINES TO BE CONFIRMED IN FIELD.
 - INSTALL NEW SEWER BY TRENCHLESS METHODS, UNLESS OTHERWISE NOTED.
 - EXISTING 200 WWS PIPE TO BE ABANDONED AFTER ALL LIVE CONNECTIONS DIVERTED TO NEW 300 PVC WWS AS PER SPECIFICATION.
 - EXISTING OUTGOING 200 PIPE TO BE ABANDONED AFTER ALL LIVE CONNECTIONS DIVERTED TO NEW 300 PVC WWS AS PER SPECIFICATION.
 - ALL SERVICES SHALL BE RENEWED TO PROPERTY LINE.
 - UPSTREAM 600 WWS PIPE NOT IN CONTRACT NO. 2. PROVISION FOR FUTURE CONTRACT NO. 3 CONNECTION TO BE PROVIDED BY ENSURING NEW MH 036 HAS SUITABLE PRE-CORED HOLE IN PLACE. HOLE TO BE SECURELY BOARDED UP.

DISTANCE FROM MH ID E19		
DISTANCE	DIAMETER	CLOCK
11.4	150	2
15.9	150	9
23.6	150	2
29.0	150	11
64.3	150	2



APEGM
 Certificate of Authorization
 CH2M HILL Canada Ltd.
 No. 1441



200 WM	WATERMAIN	200 WM	SL, HYDRO	150 WM	WATERMAIN	150 WM
⊕	HYDRANT	⊕	MTS	⊕	HYDRANT	⊕
⊙	VALVE	⊙	TRAFFIC SIGNALS	⊙	VALVE	⊙
525 LDS	LAND DRAINAGE SEWER	525 LDS	50 GAS	300 LOS	LAND DRAINAGE SEWER	300 LDS
375 WWS	WASTEWATER SEWER	375 WWS	⊕	250 WWS	WASTEWATER SEWER	250 WWS
○	MANHOLE	●	⊗	⊗	⊗	⊗
▽	CATCH BASIN	▽	• H • T	⊗	POLE - HYDRO, MTS	⊗
□	CURB INLET	■	⊕	⊕	CURB STOP	⊕
⊕	JUNCTIONS	⊕	⊕	⊕	GUY ANCHOR	⊕
⊕	CULVERT	⊕	⊕	⊕	LIGHT STANDARD	⊕
⊕	ANODE	⊕	⊕	⊕	TREE	⊕
EXISTING	LEGEND-PLAN	PROPOSED	EXISTING	LEGEND-PLAN	PROPOSED	EXISTING
---	LEGEND-PROFILE	---	---	---	LEGEND-PROFILE	---

LOCATION APPROVED UNDERGROUND STRUCTURES

SUPV. U/G STRUCTURES COMMITTEE DATE

NOTE:
 LOCATION OF UNDERGROUND STRUCTURES AS SHOWN ARE BASED ON THE BEST INFORMATION AVAILABLE BUT NO GUARANTEE IS GIVEN THAT ALL EXISTING UTILITIES ARE SHOWN OR THAT THE GIVEN LOCATIONS ARE EXACT. CONFIRMATION OF EXISTENCE AND EXACT LOCATION OF ALL SERVICES MUST BE OBTAINED FROM THE INDIVIDUAL UTILITIES BEFORE PROCEEDING WITH CONSTRUCTION.

B.M. ELEV.	CONSTRUCTION COMPLETION DATE: YYYY MM DD	DESIGNED BY: MAF	CHECKED BY: MD
		DRAWN BY: JBC	APPROVED BY: ES
		SCALE: HORIZONTAL 1:250	RELEASED FOR CONSTRUCTION: KZ
		VERTICAL 1:50	DATE: 2016-09-15
0	ISSUED FOR TENDER 09/16	JBC	
NO.	REVISIONS	DATE	BY

ENGINEER'S SEAL
 PROVINCE OF MANITOBA
 S.D. GODON
 Member 25524
 REGISTERED PROFESSIONAL ENGINEER
 CONSULTANT DRAWING NUMBER
 C-309

THE CITY OF WINNIPEG
 WATER AND WASTE DEPARTMENT
 ENGINEERING DIVISION

TRANSCONA SEWER RELIEF WORKS
 CONTRACT NO. 2
 LEOLA ST
 FROM YALE AVE E. TO
 VICTORIA AVE E.

SHEET 21 OF 22
 CITY DRAWING NUMBER
 LD-7919