

LOCATION PLAN
NTS

WARNING
IF POWER EQUIPMENT OR EXPLOSIVES ARE TO BE USED FOR EXCAVATION ON THIS PROJECT THE CONTRACTOR MUST:
1) NOTIFY THE GAS COMPANY OF THE PROPOSED LOCATION OF EXCAVATION.
2) TAKE PRECAUTION TO AVOID DAMAGE TO GAS COMPANY INSTALLATIONS.
SEE PROVINCIAL REGULATION 210/72 FOR DETAILS

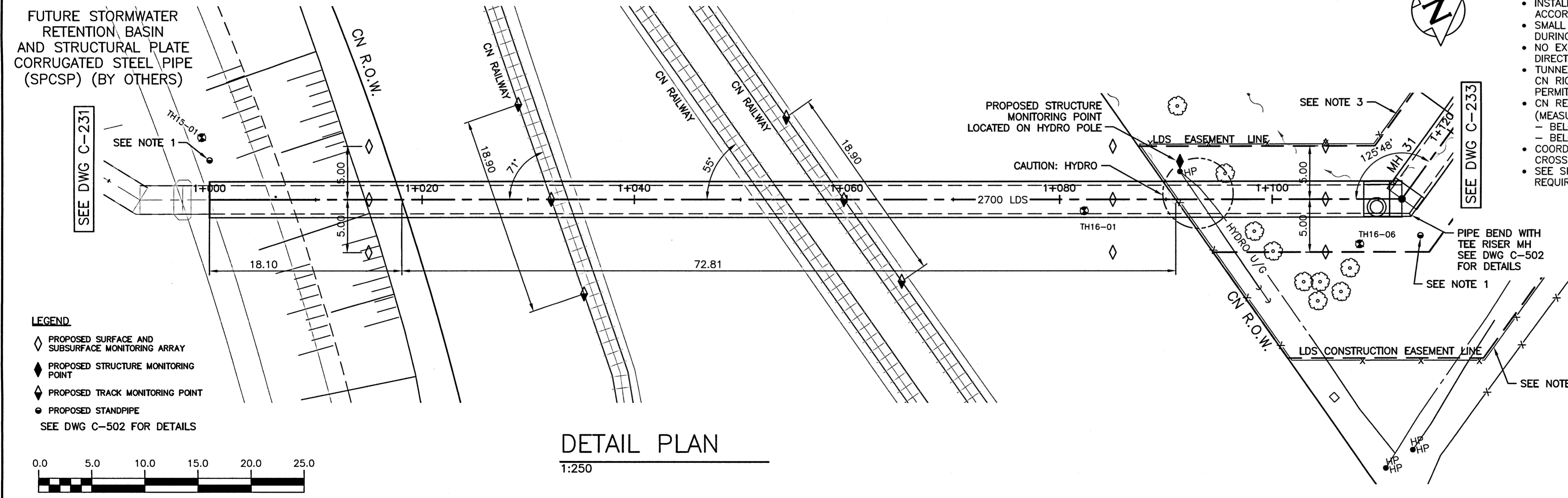
PROPERTY LIMITS DELINEATION
DELINEATION OF PROPERTY LIMITS AS SHOWN ON THIS DWG DOES NOT REPRESENT A "LEGAL SURVEY". CH2M HILL MAKES NO REPRESENTATION OR WARRANTY AS TO THE ACCURACY OF PROPERTY LIMITS DELINEATED ON THIS DRAWING, NOR ON THE DIMENSIONAL ACCURACY OF DRAWING FEATURES RELATIVE TO THOSE PROPERTY LIMITS.

CONSTRUCTION NOTES:
1. PROPOSED STANDPIPE LOCATION TO BE DETERMINED ON SITE BY THE CONTRACTOR PRIOR TO CONSTRUCTION COMMENCEMENT. REFER TO SPECIFICATION FOR DETAILS.
2. INSTALL AND MAINTAIN TEMPORARY CONSTRUCTION FENCING ALONG ALL LDS CONSTRUCTION EASEMENT LINES.
3. MAINTAIN ACCESS TO REAR OF WALMART AT ALL TIMES.

STORMWATER PIPE SPECIFICATIONS
I.D (NOMINAL) - 2743 mm
WALL THICKNESS - 273 mm
MATERIAL - REINFORCED CONCRETE
GRADE - C76-CLV
INSTALLATION METHOD - TRENCHLESS METHOD
MAX. PRES. - ATMOSPHERIC

CANADIAN NATIONAL RAILWAYS	
MILEAGE	2.91
SUBDIVISION	RIVERS

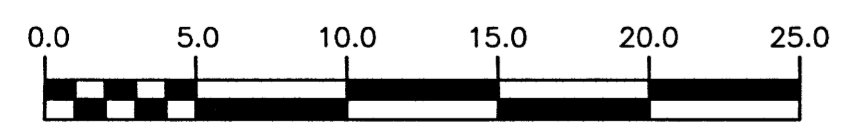
CROSSING PROFILE
HORZ. 1:250 VERT. 1:50



DETAIL PLAN
1:250

- NOTES:**
- WARNING MARKERS REQUIRED AT EACH SIDE OF CN RIGHT-OF-WAY.
 - INSTALLATION AND MAINTENANCE TO BE IN ACCORDANCE WITH TRANSPORT CANADA TC E-10.
 - SMALL RISK OF VERY LOW SURCHARGE PRESSURES DURING HIGH FLOW EVENTS.
 - NO EXCAVATION WITHIN CN RIGHT-OF-WAY UNLESS DIRECTED BY CONTRACT ADMINISTRATOR.
 - TUNNELING SHOULD EXTEND THE FULL LENGTH OF CN RIGHT-OF-WAY WITH NO INTERMEDIATE SHAFTS PERMITTED.
 - CN REQUIREMENT FOR MINIMUM DEPTH OF BURIAL (MEASURED TO TOP OF PIPE)
- BELOW TRACK = 1.68m
- BELOW CN R.O.W. = 0.9m
 - COORDINATE WITH CN IN ACCORDANCE WITH CROSSING AGREEMENT..
 - SEE SPECIFICATIONS FOR ADDITIONAL REQUIREMENTS.

- LEGEND**
- ◇ PROPOSED SURFACE AND SUBSURFACE MONITORING ARRAY
 - ◆ PROPOSED STRUCTURE MONITORING POINT
 - ◆ PROPOSED TRACK MONITORING POINT
 - PROPOSED STANDPIPE
- SEE DWG C-502 FOR DETAILS



150 WM	WATER MAIN	150 WM	HYDRO	150 WM	WATER MAIN	150 WM
+	HYDRANT	+	M.T.S.	+	HYDRANT, VALVE	+
+	VALVE	+	CONCRETE	+	LAND DRAINAGE SEWER	+
300 LDS	LAND DRAINAGE SEWER	300 LDS	ASPHALT	300 LDS	WASTE WATER SEWER	300 LDS
250 WWS	WASTE WATER SEWER	250 WWS	SIDEWALK	250 WWS	CENTRELINE	250 WWS
○	MANHOLE	○	PLANNING	○	NORTH/WEST GUTTER	○
□	CATCH BASIN	□	PROPERTY LINE	□	SOUTH/EAST GUTTER	□
▽	CURB INLET	▽	SURVEY BAR	◇, ○	N/W, S/E P'S	◇, ○
▽	BEND	▽	GAS			
▽	REDUCER	▽	CURB STOP			
∩	TEE	∩	TEE			
EXISTING	LEGEND-PLAN	PROPOSED	EXISTING	LEGEND-PLAN	PROPOSED	EXISTING
EXISTING	LEGEND-PROFILE	PROPOSED	EXISTING	LEGEND-PROFILE	PROPOSED	EXISTING

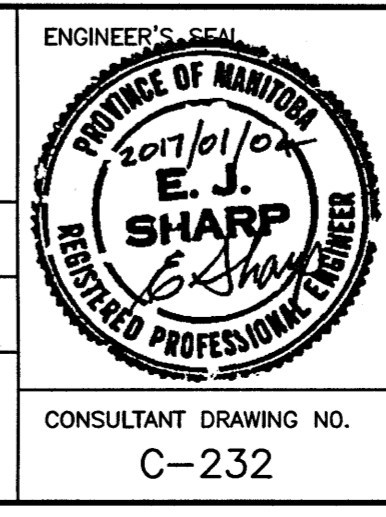
LOCATION APPROVED UNDERGROUND STRUCTURES

SUPV. U/G STRUCTURES DATE COMMITTEE

NOTE:
LOCATION OF UNDERGROUND STRUCTURES AS SHOWN ARE BASED ON THE BEST INFORMATION AVAILABLE BUT NO GUARANTEE IS GIVEN THAT ALL EXISTING UTILITIES ARE SHOWN OR THAT THE GIVEN LOCATIONS ARE EXACT. CONFIRMATION OF EXISTENCE AND EXACT LOCATION OF ALL SERVICES MUST BE OBTAINED FROM THE INDIVIDUAL UTILITIES BEFORE PROCEEDING WITH CONSTRUCTION.

B.M. ELEV.	
NO.	REVISIONS
DATE	BY

KGS GROUP CONSULTING ENGINEERS	DESIGNED BY: SDG	CHECKED BY: MD
	DRAWN BY: JBC	APPROVED BY: RBO
	HOR. SCALE: 1:250	RELEASED FOR CONSTRUCTION: [Signature]
	VERTICAL: 1:50	DATE: Jan 5/19
	ISSUED FOR TENDER: 01/2017	JBC



THE CITY OF WINNIPEG
WATER AND WASTE DEPARTMENT

PROJECT TITLE
COCKBURN AND CALROSSIE COMBINED
SEWER RELIEF WORKS - CONTRACT 4

CN CROSSING
FROM STA 1+000 TO MH 31

SHEET OF
6 OF 12

COMPUTER FILE NAME
C-232.dwg

CITY DRAWING NUMBER
LD-7892

CONSULTANT DRAWING NO.
C-232