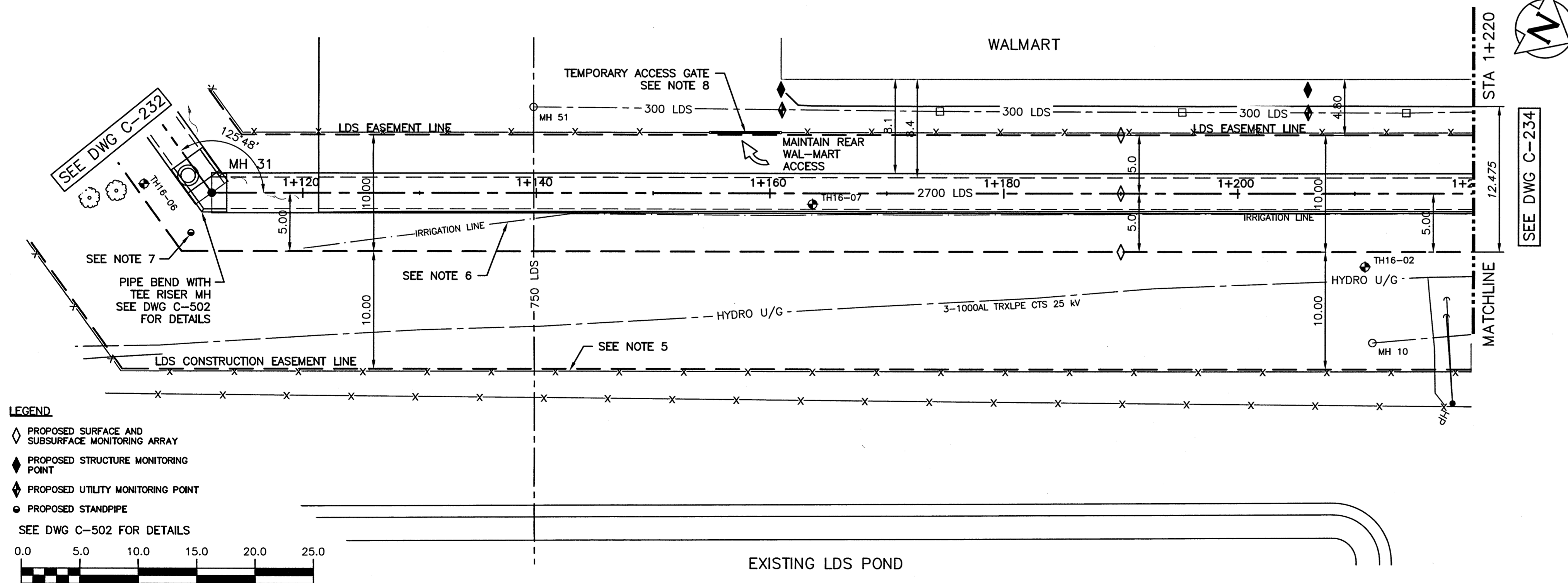


1+120 1+140 1+160 1+180 1+200 1+220



WARNING
 IF POWER EQUIPMENT OR EXPLOSIVES ARE TO BE USED FOR EXCAVATION ON THIS PROJECT THE CONTRACTOR MUST:
 1) NOTIFY THE GAS COMPANY OF THE PROPOSED LOCATION OF EXCAVATION.
 2) TAKE PRECAUTION TO AVOID DAMAGE TO GAS COMPANY INSTALLATIONS.
 SEE PROVINCIAL REGULATION 210/72 FOR DETAILS.

PROPERTY LIMITS DELINEATION
 DELINEATION OF PROPERTY LIMITS AS SHOWN ON THIS DWG DOES NOT REPRESENT A "LEGAL SURVEY". CH2M HILL MAKES NO REPRESENTATION OR WARRANTY AS TO THE ACCURACY OF PROPERTY LIMITS DELINEATED ON THIS DRAWING, NOR ON THE DIMENSIONAL ACCURACY OF DRAWING FEATURES RELATIVE TO THOSE PROPERTY LIMITS.

- CONSTRUCTION NOTES:**
- SEWER AND WATER SERVICES SHOWN ON DRAWING ARE APPROXIMATE ONLY.
 - LOCATION OF ALL SEWER AND WATER LINES TO BE CONFIRMED IN FIELD.
 - INSTALL NEW SEWER BY TRENCHLESS METHODS, UNLESS OTHERWISE NOTED.
 - MAINTAIN ACCESS TO REAR OF WALMART AT ALL TIMES.
 - INSTALL AND MAINTAIN TEMPORARY CONSTRUCTION FENCING ALONG ALL LDS CONSTRUCTION EASEMENT LINES.
 - IRRIGATION LINE TO BE CONFIRMED PRIOR TO CONSTRUCTION AND RELOCATED IF NECESSARY.
 - PROPOSED STANDPIPE LOCATION TO BE DETERMINED ON SITE BY THE CONTRACTOR PRIOR TO CONSTRUCTION COMMENCEMENT. REFER TO SPECIFICATION FOR DETAILS.
 - TEMPORARY ACCESS GATE IN CONSTRUCTION FENCE TO BE SUFFICIENT TO ALLOW ALL NECESSARY DELIVERY TRUCK ENTRY AND EXIT TO REAR OF WALMART BUILDING.

LEGEND
 ♦ PROPOSED SURFACE AND SUBSURFACE MONITORING ARRAY
 ◆ PROPOSED STRUCTURE MONITORING POINT
 ◆ PROPOSED UTILITY MONITORING POINT
 ○ PROPOSED STANDPIPE
 SEE DWG C-502 FOR DETAILS

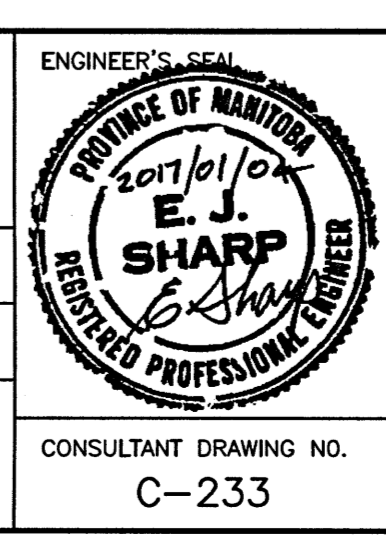
150 WM	WATER MAIN	150 WM	HYDRO	150 WM	WATER MAIN	150 WM	WATER MAIN	150 WM
300 LDS	LAND DRAINAGE SEWER	300 LDS	M.T.S.	300 LDS	HYDRANT, VALVE	300 LDS	LAND DRAINAGE SEWER	300 LDS
250 WWS	WASTE WATER SEWER	250 WWS	CONCRETE	250 WWS	WASTE WATER SEWER	250 WWS	WASTE WATER SEWER	250 WWS
○	MANHOLE	●	ASPHALT	○	CENTRELINE	○	NORTH/WEST GUTTER	○
□	CATCH BASIN	■	SIDEWALK	□	SOUTH/EAST GUTTER	□	SOUTH/EAST GUTTER	□
▽	CURB INLET	▽	PLANNING	▽	N/W, S/E P'S	▽		▽
∩	BEND	∩	PROPERTY LINE	∩		∩		∩
∩	REDUCER	∩	SURVEY BAR	∩		∩		∩
∩		∩	GAS	∩		∩		∩
∩		∩	CURB STOP	∩		∩		∩
∩		∩	TEE	∩		∩		∩
EXISTING	LEGEND-PLAN	PROPOSED	EXISTING	LEGEND-PLAN	PROPOSED	EXISTING	LEGEND-PROFILE	PROPOSED

LOCATION APPROVED UNDERGROUND STRUCTURES
 SUPV. U/G STRUCTURES DATE COMMITTEE
 NOTE:
 LOCATION OF UNDERGROUND STRUCTURES AS SHOWN ARE BASED ON THE BEST INFORMATION AVAILABLE BUT NO GUARANTEE IS GIVEN THAT ALL EXISTING UTILITIES ARE SHOWN OR THAT THE GIVEN LOCATIONS ARE EXACT. CONFIRMATION OF EXISTENCE AND EXACT LOCATION OF ALL SERVICES MUST BE OBTAINED FROM THE INDIVIDUAL UTILITIES BEFORE PROCEEDING WITH CONSTRUCTION.

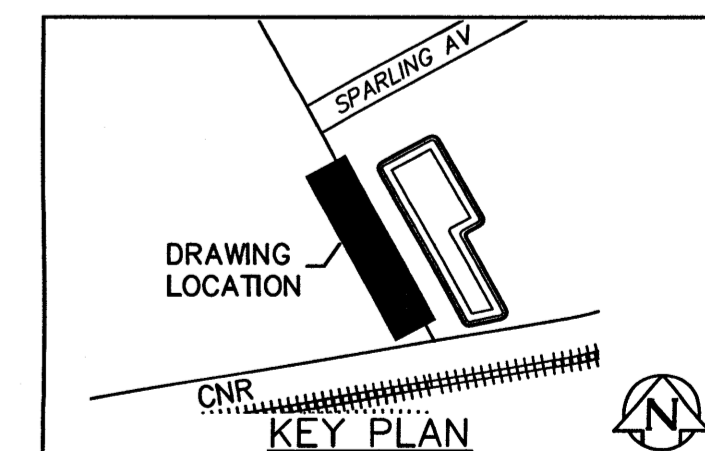
B.M. ELEV.	
NO.	REVISIONS
DATE	BY
0	ISSUED FOR TENDER 01/2017 JBC

KGS GROUP CONSULTING ENGINEERS

DESIGNED BY: SDG
 DRAWN BY: JBC
 CHECKED BY: MD
 APPROVED BY: R30
 HOR. SCALE: 1:250
 VERTICAL: 1:50
 RELEASED FOR CONSTRUCTION: 30/05/17



APEGM
 Certificate of Authorization
 CH2M HILL Canada Ltd.
 No. 1441



THE CITY OF WINNIPEG WATER AND WASTE DEPARTMENT

PROJECT TITLE: COCKBURN AND CALROSSIE COMBINED SEWER RELIEF WORKS - CONTRACT 4
 FROM MH 31 TO STA 1+220

SHEET OF 7 OF 12
 COMPUTER FILE NAME: C-233.dwg
 CITY DRAWING NUMBER: LD-7893

File Name: C:\pw_workdir\ch2mhill_wbg\portez\00204776