

1+420 1+440 1+460 1+480 1+500 1+520

**WARNING**

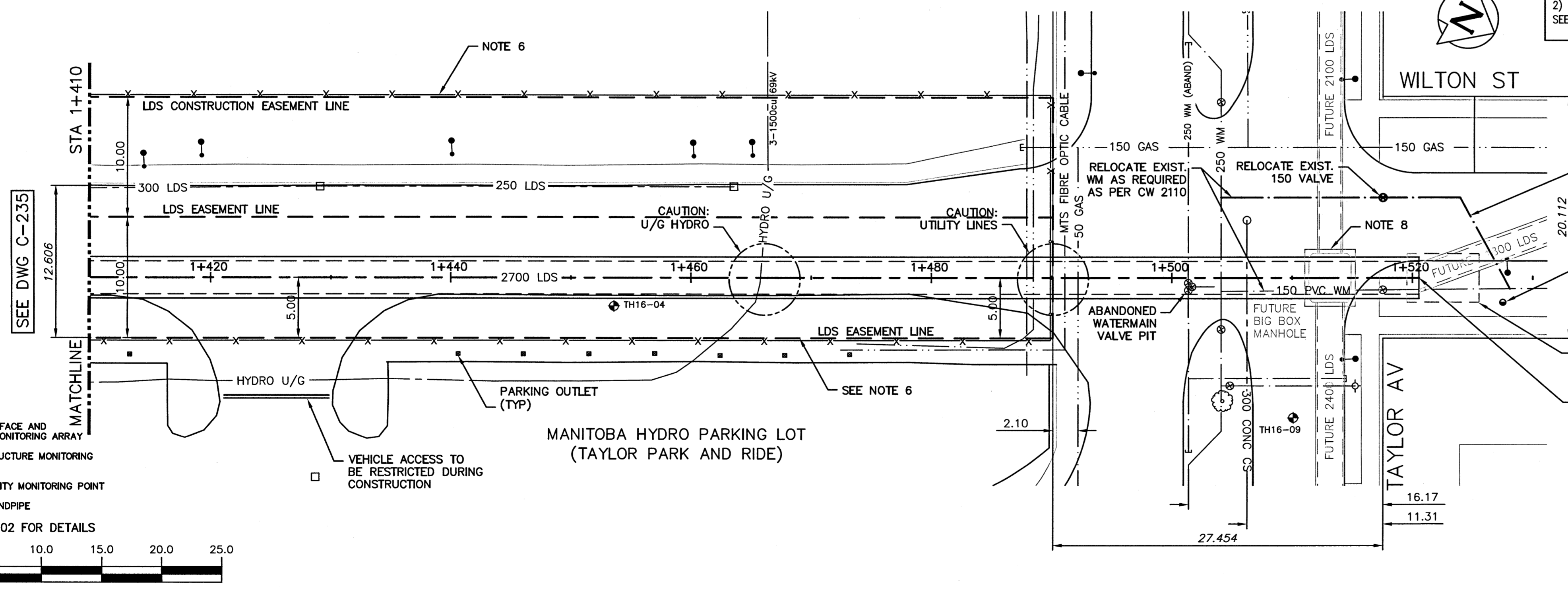
IF POWER EQUIPMENT OR EXPLOSIVES ARE TO BE USED FOR EXCAVATION ON THIS PROJECT THE CONTRACTOR MUST:  
 1) NOTIFY THE GAS COMPANY OF THE PROPOSED LOCATION OF EXCAVATION.  
 2) TAKE PRECAUTION TO AVOID DAMAGE TO GAS COMPANY INSTALLATIONS.  
 SEE PROVINCIAL REGULATION 210/72 FOR DETAILS

**PROPERTY LIMITS DELINEATION**

DELINEATION OF PROPERTY LIMITS AS SHOWN ON THIS DWG DOES NOT REPRESENT A "LEGAL SURVEY". CH2M HILL MAKES NO REPRESENTATION OR WARRANTY AS TO THE ACCURACY OF PROPERTY LIMITS DELINEATED ON THIS DRAWING, NOR ON THE DIMENSIONAL ACCURACY OF DRAWING FEATURES RELATIVE TO THOSE PROPERTY LIMITS.

**CONSTRUCTION NOTES:**

- SEWER AND WATER SERVICES SHOWN ON DRAWING ARE APPROXIMATE ONLY. LOCATION OF ALL SEWER AND WATER LINES TO BE CONFIRMED IN FIELD.
- INSTALL NEW SEWER BY TRENCHLESS METHODS, UNLESS OTHERWISE NOTED. REFER TO SPECIFICATION FOR DETAILS OF TRAFFIC MANAGEMENT ON TAYLOR AVENUE.
- CONTRACTOR'S TEMPORARY SHAFT TO HAVE A MIN. OF 1.0m OF PROPOSED 2700 LDS ENTER FROM SOUTH. TEMPORARY SHORING ON SOUTH SIDE TO REMAIN UP TO 1.0m BELOW GROUND ELEVATION AND SHAFT FULLY BACKFILLED WITH CONTROLLED LOW STRENGTH MATERIAL (MAX. 1MPa). REINSTATEMENT OF ALL PAVEMENT AREAS TO BE TEMPORARY ASPHALT (50mm DEPTH) OVER CONTROLLED LOW STRENGTH MATERIAL. CONSTRUCTION FENCING TO REMAIN IN PLACE AROUND SHAFT AREA DURING CONSTRUCTION. FENCING TO BE REMOVED AFTER SHAFT BACKFILLED. LIMITS OF TEMPORARY SHAFT ARE SHOWN FOR ILLUSTRATIVE PURPOSES ONLY.
- INSTALL AND MAINTAIN TEMPORARY CONSTRUCTION FENCING ALONG ALL LDS CONSTRUCTION EASEMENT LINES.
- PROPOSED STANDPIPE LOCATION TO BE DETERMINED ON SITE BY THE CONTRACTOR PRIOR TO CONSTRUCTION COMMENCEMENT. REFER TO SPECIFICATION FOR DETAILS.
- FUTURE CONNECTION PIPE WORK AND MANHOLE SHOWN FOR ILLUSTRATION PURPOSES ONLY.
- FINAL WATERMAIN RELOCATION ALIGNMENT TO BE DETERMINED BY THE CONTRACT ADMINISTRATOR IN THE FIELD ONCE CONTRACTOR'S SHAFT LAYOUT IS FINALIZED.



**LEGEND**

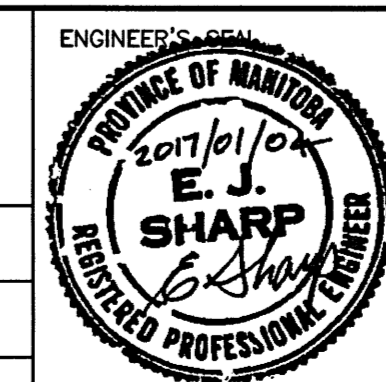
- PROPOSED SURFACE AND SUBSURFACE MONITORING ARRAY
  - PROPOSED STRUCTURE MONITORING POINT
  - PROPOSED UTILITY MONITORING POINT
  - PROPOSED STANDPIPE
- SEE DWG C-502 FOR DETAILS

EXISTING	LEGEND-PLAN	PROPOSED	EXISTING	LEGEND-PLAN	PROPOSED	EXISTING	LEGEND-PROFILE	PROPOSED
150 WM	WATER MAIN	150 WM	HYDRO	HYDRO	150 WM	WATER MAIN	150 WM	WATER MAIN
300 LDS	LAND DRAINAGE SEWER	300 LDS	CONCRETE	CONCRETE	300 LDS	LAND DRAINAGE SEWER	300 LDS	LAND DRAINAGE SEWER
250 WWS	WASTE WATER SEWER	250 WWS	ASPHALT	ASPHALT	250 WWS	WASTE WATER SEWER	250 WWS	WASTE WATER SEWER
MANHOLE	MANHOLE	MANHOLE	SIDWALK	SIDWALK	MANHOLE	MANHOLE	MANHOLE	MANHOLE
CATCH BASIN	CATCH BASIN	CATCH BASIN	PLANNING	PLANNING	CATCH BASIN	CATCH BASIN	CATCH BASIN	CATCH BASIN
CURB INLET	CURB INLET	CURB INLET	PROPERTY LINE	PROPERTY LINE	CURB INLET	CURB INLET	CURB INLET	CURB INLET
BEND	BEND	BEND	SURVEY BAR	SURVEY BAR	BEND	BEND	BEND	BEND
REDUCER	REDUCER	REDUCER	GAS	GAS	REDUCER	REDUCER	REDUCER	REDUCER
T	T	T	CURB STOP	CURB STOP	T	T	T	T
J	J	J	TEE	TEE	J	J	J	J

**LOCATION APPROVED UNDERGROUND STRUCTURES**

SUPV. U/G STRUCTURES COMMITTEE DATE  
 NOTE:  
 LOCATION OF UNDERGROUND STRUCTURES AS SHOWN ARE BASED ON THE BEST INFORMATION AVAILABLE BUT NO GUARANTEE IS GIVEN THAT ALL EXISTING UTILITIES ARE SHOWN OR THAT THE GIVEN LOCATIONS ARE EXACT. CONFIRMATION OF EXISTENCE AND EXACT LOCATION OF ALL SERVICES MUST BE OBTAINED FROM THE INDIVIDUAL UTILITIES BEFORE PROCEEDING WITH CONSTRUCTION.

NO.	REVISIONS	DATE	BY
1	RE-ISSUED FOR TENDER	01/2017	JBC
0	ISSUED FOR TENDER	01/2017	JBC



**THE CITY OF WINNIPEG**  
 WATER AND WASTE DEPARTMENT

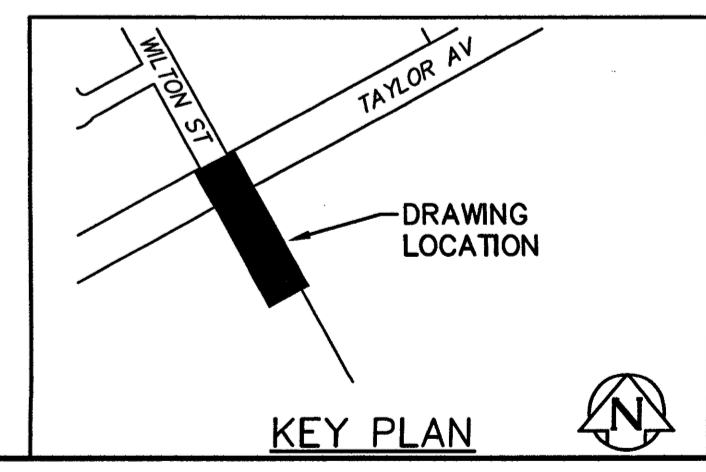
PROJECT TITLE  
**COCKBURN AND CALROSSIE COMBINED SEWER RELIEF WORKS - CONTRACT 4**

WILTON STREET  
 FROM STA 1+410 TO MH 32

SHEET OF  
 10 OF 12

COMPUTER FILE NAME  
 C-236.dwg

CITY DRAWING NUMBER  
 LD-7896



File name C:\p\_w\workdir\ch2mhill\_wbg\locartex\0204776