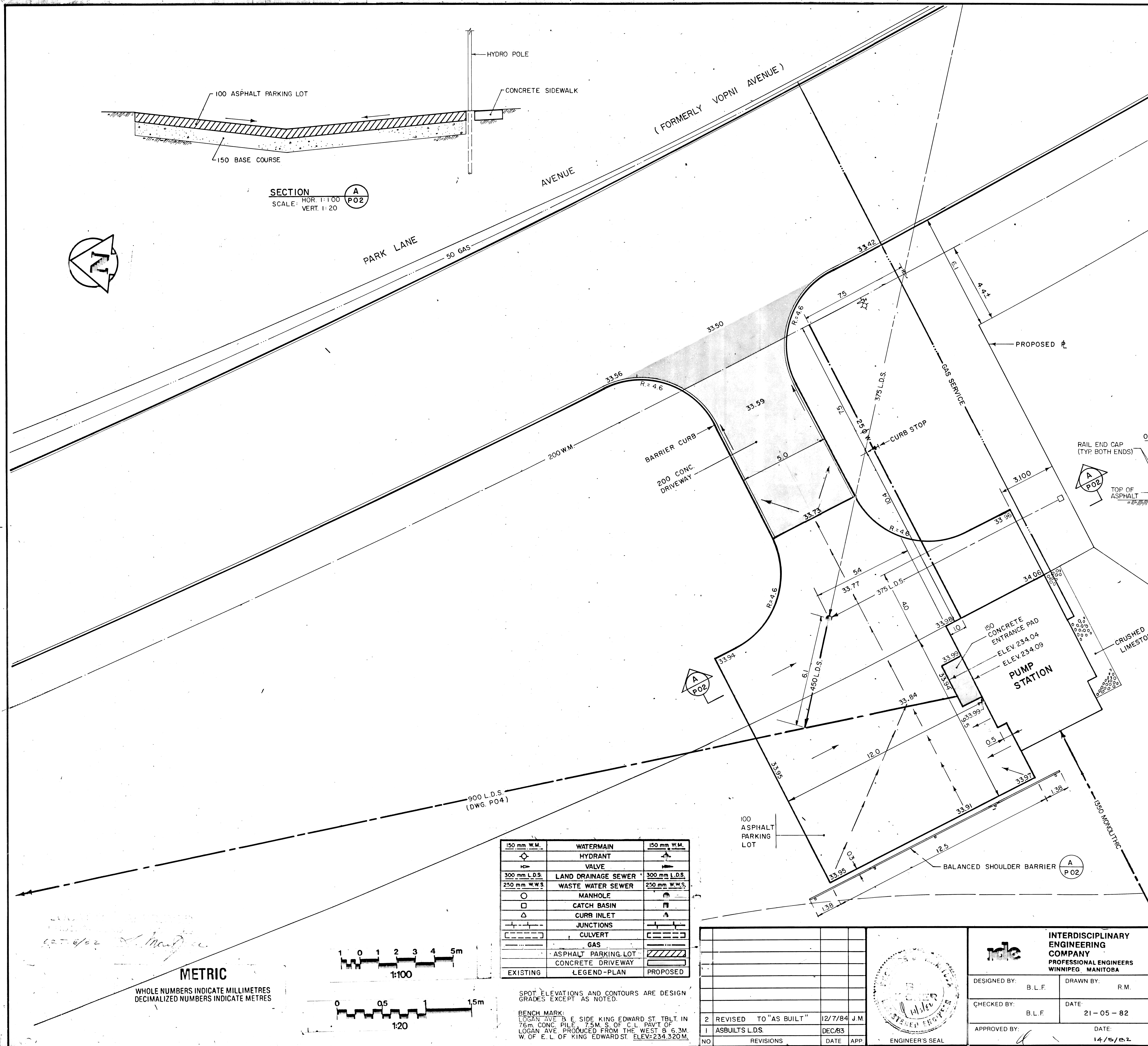
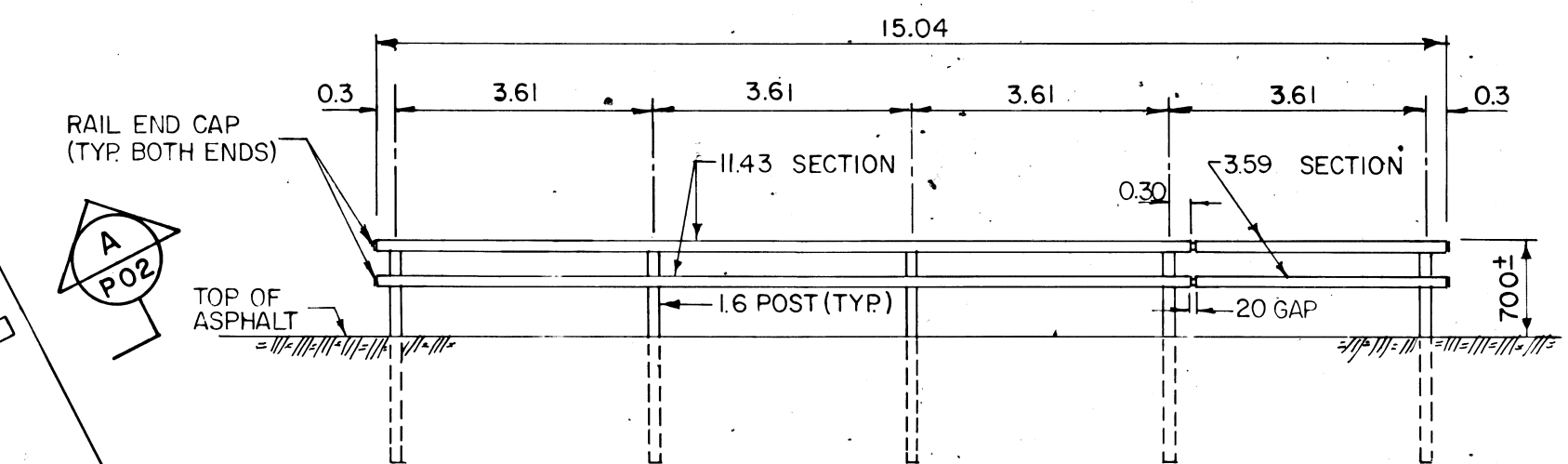


REF. or DRAWING No. **LD-880**  
 FILE # **LD10278**  
 DETAILS



PLAN No	DATE	DESCRIPTION
<b>I. GENERAL</b>		
U-228-83-P 01	MAY 21 / 82	COVER SHEET
U-228-83-P 02	MAY 21 / 82	PUMP STATION SITE PLAN
U-228-83-P 03	MAY 21 / 82	LAND DRAINAGE SEWER STA. 1+00 TO 1+21.3 EAST
U-228-83-P 04	MAY 21 / 82	LAND DRAINAGE SEWER STA. 1+00 TO 1+87.4 ± NORTH
U-228-83-P 05	MAY 21 / 82	PUMP STATION SUPERSTRUCTURE
U-228-83-P 06	MAY 21 / 82	PUMP STATION FLOOR PLANS
U-228-83-P 07	MAY 21 / 82	PUMP STATION SECTIONS
U-228-83-P 08	MAY 21 / 82	PUMP STATION REINFORCEMENT I
U-228-83-P 09	MAY 21 / 82	PUMP STATION REINFORCEMENT II
U-228-83-P 10	MAY 21 / 82	PUMP STATION BAR LIST
U-228-83-P 11	MAY 21 / 82	PUMP STATION MISCELLANEOUS METAL
U-228-83-P 12	MAY 21 / 82	PUMP STATION ELECTRICAL PLANS & DETAILS
U-228-83-P 13	MAY 21 / 82	PUMP STATION ELECTRICAL CONTROL SCHEMATIC
U-228-83-P 14	MAY 21 / 82	PUMP STATION ELECTRICAL SITE PLAN & SECTION
U-228-83-P 15	MAY 21 / 82	BALANCED SHOULDER BARRIER STANDARD DETAILS
<b>II REFERENCE</b>		
U-228-83-B 03	MAR. 31 / 82	GENERAL ARRANGEMENT
U-228-83-B 04	MAR. 31 / 82	EXISTING SITE PLAN
U-228-83-B 05	MAR. 31 / 82	SOIL TEST HOLE DATA



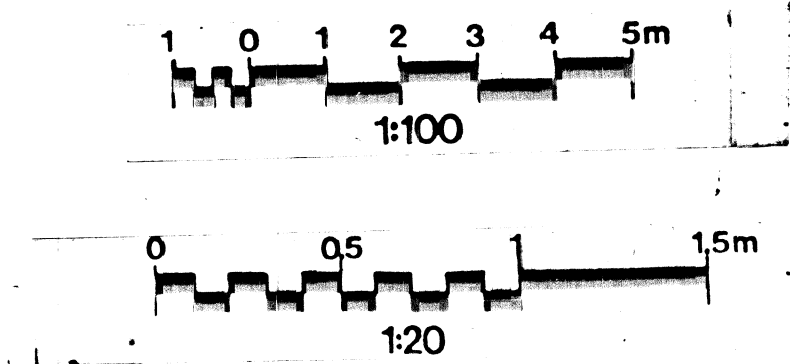
**DETAIL A**  
 SCALE 1:100  
 (BALANCED SHOULDER BARRIER INSTALLATION DETAIL  
 SEE STANDARD DETAILS ON DWG. P15)

BILL OF MATERIALS	
ITEMS	
11.43 RAIL SECTION	2
3.59 RAIL SECTION	2
1.60 POST (SHOULDER TYPE)	5

COMPLETE WITH ALL RELATED RAIL CLAMP BARS, RAIL SPLICE BARS, STAINLESS STEEL CAP SCREWS, STAINLESS STEEL WASHERS, AND RAIL END CAPS AS REQ'D FOR A COMPLETE INSTALLATION

150 mm W.M.	WATERMAIN	150 mm W.M.
HYDRANT		
VALVE		
300 mm L.D.S.	LAND DRAINAGE SEWER	300 mm L.D.S.
250 mm W.W.S.	WASTE WATER SEWER	250 mm W.W.S.
MANHOLE		
CATCH BASIN		
CURB INLET		
JUNCTIONS		
CULVERT		
GAS		
ASPHALT PARKING LOT		
CONCRETE DRIVEWAY		
EXISTING		PROPOSED

**METRIC**  
 WHOLE NUMBERS INDICATE MILLIMETRES  
 DECIMALIZED NUMBERS INDICATE METRES



SPOT ELEVATIONS AND CONTOURS ARE DESIGN GRADES EXCEPT AS NOTED.  
 BENCH MARK: LOGAN AVE & E SIDE KING EDWARD ST. TBLT. IN 76m CONC. PILE, 7.5M. S. OF C.L. PAVT. OF LOGAN AVE. PRODUCED FROM THE WEST & 6.3M. W. OF E. L. OF KING EDWARD ST. ELEV. 234.320M.

NO	REVISIONS	DATE	APP
2	REVISED TO "AS BUILT"	12/7/84	J.M.
1	ASBUILT L.D.S.	DEC/83	

**INTERDISCIPLINARY ENGINEERING COMPANY**  
 PROFESSIONAL ENGINEERS  
 WINNIPEG, MANITOBA

DESIGNED BY: B.L.F. DRAWN BY: R.M.  
 CHECKED BY: B.L.F. DATE: 21-05-82  
 APPROVED BY: DATE: 14/5/82

**THE CITY OF WINNIPEG**  
 WORKS & OPERATIONS DIVISION  
 STREETS & TRANSPORTATION DEPARTMENT

**ROUTE 90 UNDERPASS**  
 PUMP STATION SITE PLAN  
 AUTHORIZED BY: [Signature] DATE: 1982-11-08  
 ACCEPTED BY: [Signature] DATE: 82/10/08  
 SCALE: 1:100  
 DRAWING NO. U-228-83-P-02

**B-5515-2**

REVISED AS CONSTRUCTED  
 DATE 04.12.7 BY [Signature]  
 CHECKED BY [Signature]