

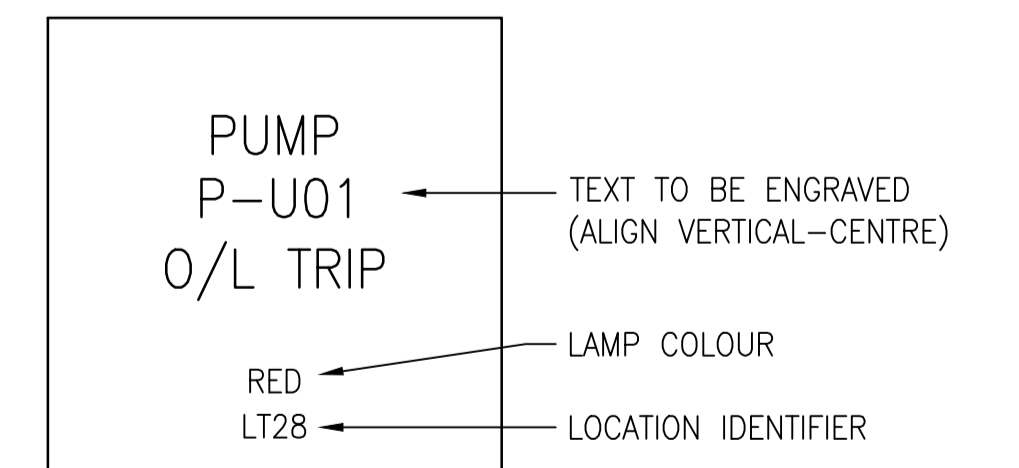
NORMAL GREEN LT01	HI WETWELL RED LT02	HI HI WETWELL RED LT03	LOSS OF ECHO RED LT04	600V POWER FAIL RED LT05	120V POWER FAIL RED LT06	BATTERY MODE OR UPS FAIL RED LT07	PUMP P-U01 RUN GREEN LT08	PUMP P-U02 RUN GREEN LT09	ENGINE ENG-U03 RUN GREEN LT10
ALARM TEST AMBER LT11	LOCAL MODE GREEN LT12	RTU MODE BLUE LT13	FAIL TO LOCAL RED LT14	GAS DETECTION ALARM RED LT15	GAS DETECTOR FAIL RED LT16	UPS CHARGING AMBER LT17	PUMP P-U01 SS FAIL RED LT18	PUMP P-U02 SS FAIL RED LT19	ENGINE ENG-U03 FAIL RED LT20
ROOM HI TEMP RED LT21	ROOM LOW TEMP RED LT22	AIR FILTER PLUGGED RED LT23	COMBUSTION AIR DAMPER FAIL TO OPEN RED LT24				PUMP P-U01 O/L TRIP RED LT28	PUMP P-U02 O/L TRIP RED LT29	

MANUFACTURER: IDEC  
MODEL: SLC30N0310-DD2FB-A(2)G(5)R(18)S(1)

**NOTES:**

1. PROVIDE ENGRAVING OF WINDOWS AS SHOWN.

**LEGEND:**



1-0310U-A0001	CONTROL PANEL LAYOUT
DRAWING NUMBER	REFERENCE DRAWINGS



00	ISSUED FOR TENDER, BID OPP: 767-2016	2016/08/23	BJC	FA
NO.	REVISIONS	DATE	DESIGN	CHECK

**SNC-LAVALIN INC.**  
148 Nature Park Way  
Winnipeg, MB, Canada R3P 0X7  
204-786-8080

DESIGNED BY: B. CLEVEN  
DRAWN BY: Y. KONIG  
SCALE: NTS  
DATE: 2016/03/23

CHECKED BY: F. ATAEI  
APPROVED BY: I. PARKINSON  
ISSUED FOR CONSTRUCTION BY: K. ZUREK  
DATE: 2016-08-29

CONSULTANT NO.:

ENGINEER'S SEAL

ORIGINAL DRAWING  
SEALED BY:  
B. J. CLEVEN  
SNC-LAVALIN INC.  
MEMBER #31479  
2016-08-29  
REV. 00

**THE CITY OF WINNIPEG**  
WATER AND WASTE DEPARTMENT

ROUTE 90 UNDERPASS PUMPING STATION  
2016 UPGRADES  
ANNUNCIATOR PANEL  
CONTROL PANEL CP-U81  
LAMP LAYOUT

CITY DRAWING NUMBER  
**1-0310U-A0012**

SHEET  
**001**

REV.  
**00**

SIZE  
**A1**