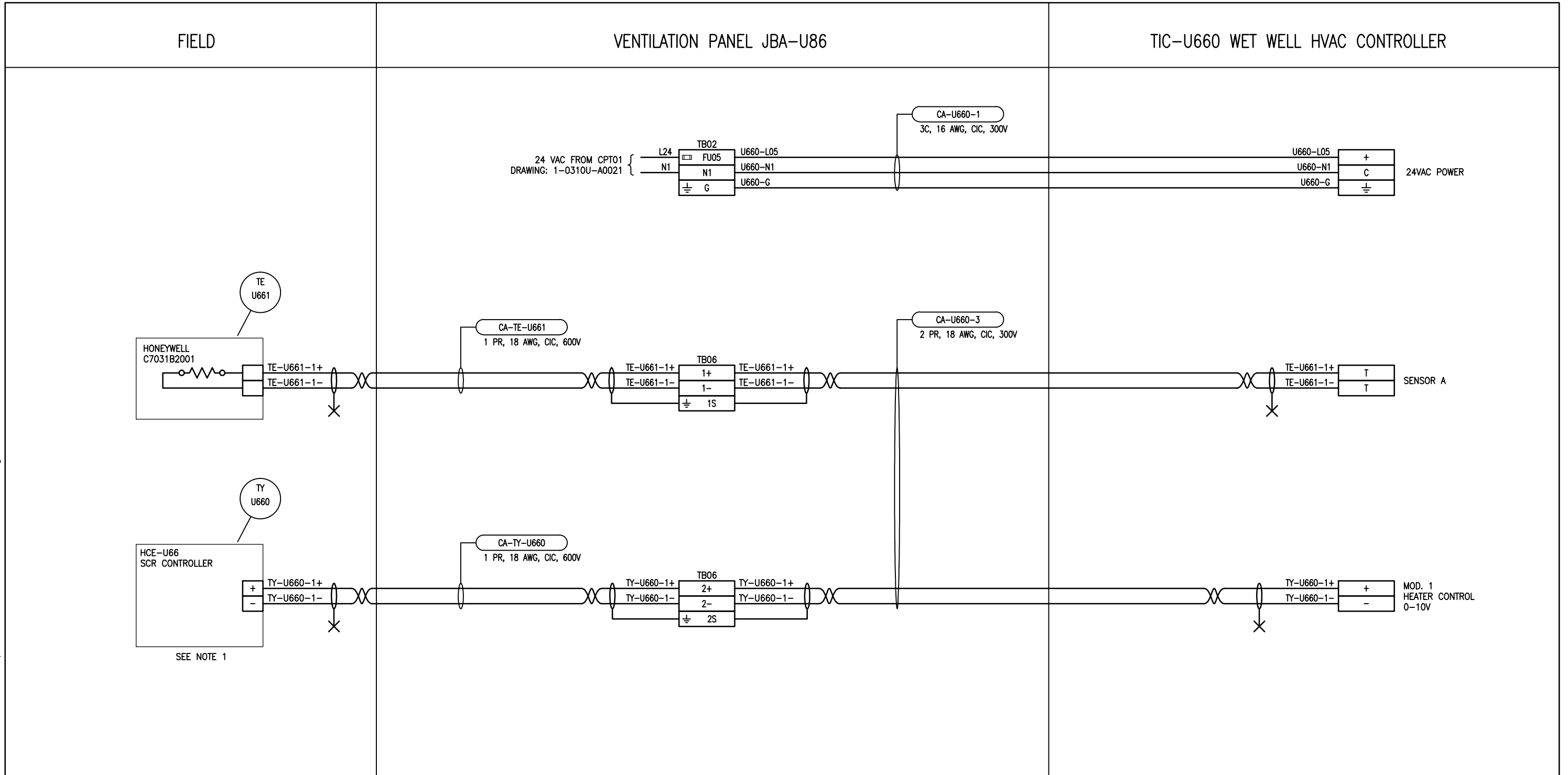


B SIZE - 279mm x 432mm

LAST SAVE: 2016/08/29 - 4:09pm
 PATH: M:\634683\4ENG\48&C\DD - General DWG\1-0310U-A0026-001-00.dwg



NOTES:
 1. DUCT HEATER HCE-U66 IS EQUIPPED WITH AN INTEGRAL AIR PROVING SWITCH (NOT SHOWN).

SEE NOTE 1



| | | | | |
|--------------------|--------------------------------------|------------|--------|-------|
| SNC-LAVALIN | | | | |
| 00 | ISSUED FOR TENDER, BID OPP. 767-2016 | 2016/08/23 | BJC | FA |
| NO. | REVISIONS | DATE | DESIGN | CHECK |

| | |
|--|------------------------------|
| SNC-LAVALIN INC. 148 Nature Park Way Winnipeg, MB, Canada R3P 0X7 204-786-8080 | |
| DESIGNED BY: B. CLEVEN | CHECKED BY: F. ATAEI |
| DRAWN BY: G. WILLIAMSON | APPROVED BY: I. PARKINSON |
| SCALE: NTS | DATE: 2016/07/07 |
| ISSUED FOR CONSTRUCTION | |
| BY: K. ZUREK | DATE: 2016-08-29 |
| CONSULTANT NO.: | |

ENGINEER'S SEAL

ORIGINAL DRAWING
 SEALED BY:
 B. J. CLEVEN
 SNC-LAVALIN INC.
 MEMBER # 31479
 2019-08-29
 REV.00

| | | | |
|---|-------|------|------|
| THE CITY OF WINNIPEG WATER AND WASTE DEPARTMENT | | | |
| ROUTE 90 UNDERPASS PUMPING STATION 2016 UPGRADES LOOP DIAGRAM HCE-U66 WET WELL DUCT HEATER TY-U660, TE-U661 | | | |
| CITY DRAWING NUMBER | SHEET | REV. | SIZE |
| 1-0310U-A0026 | 001 | 00 | B |