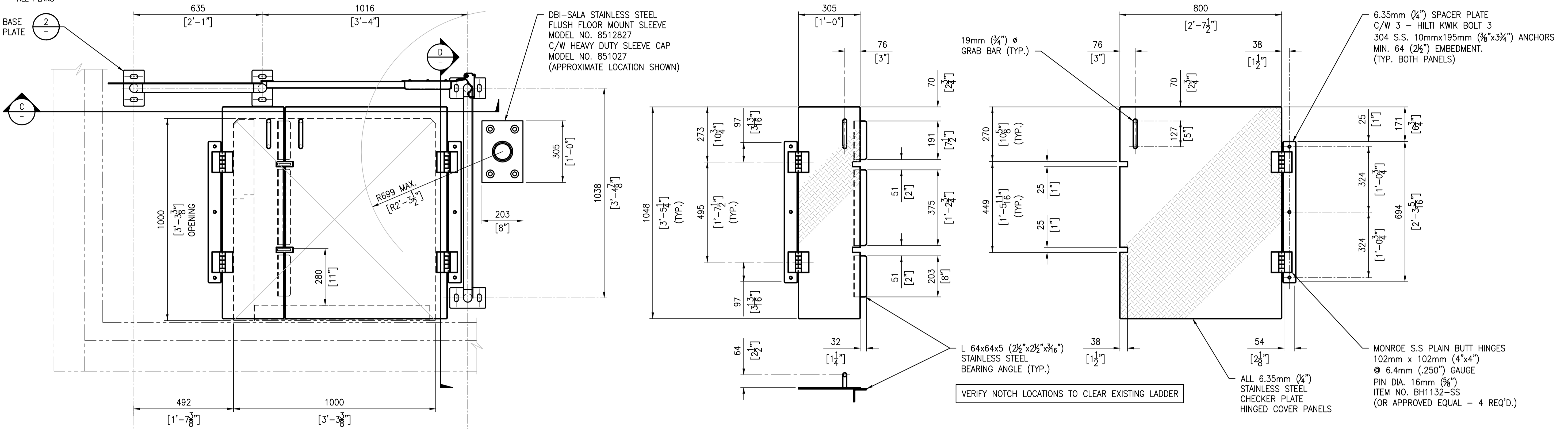


-ALL PLANS-

BASE PLATE

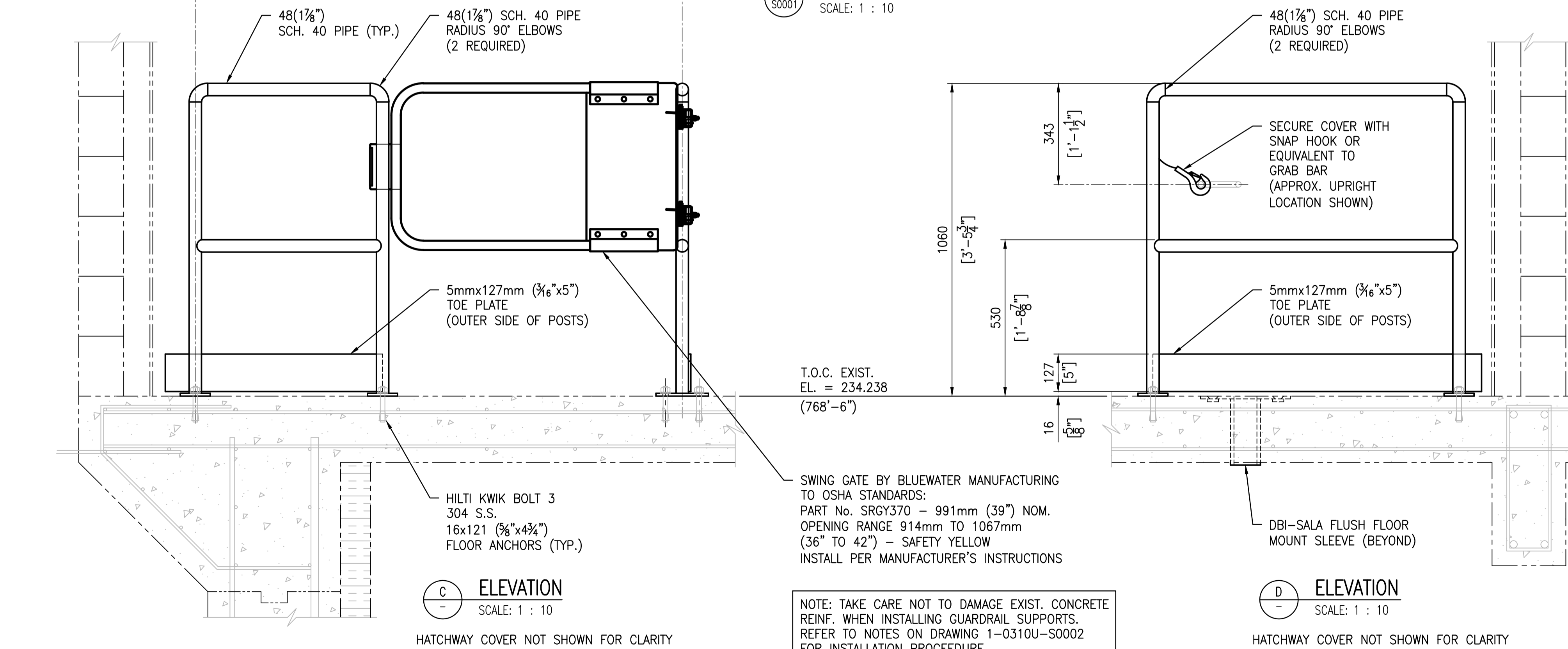
NOTES:

- SEE DRAWING 1-0310U-S0001 FOR GENERAL NOTES.
- SEE DRAWING 1-0310U-S0002 FOR STRUCTURAL NOTES.



1 DETAIL - HATCHWAY COVER & GUARDRAIL

SCALE: 1 : 10



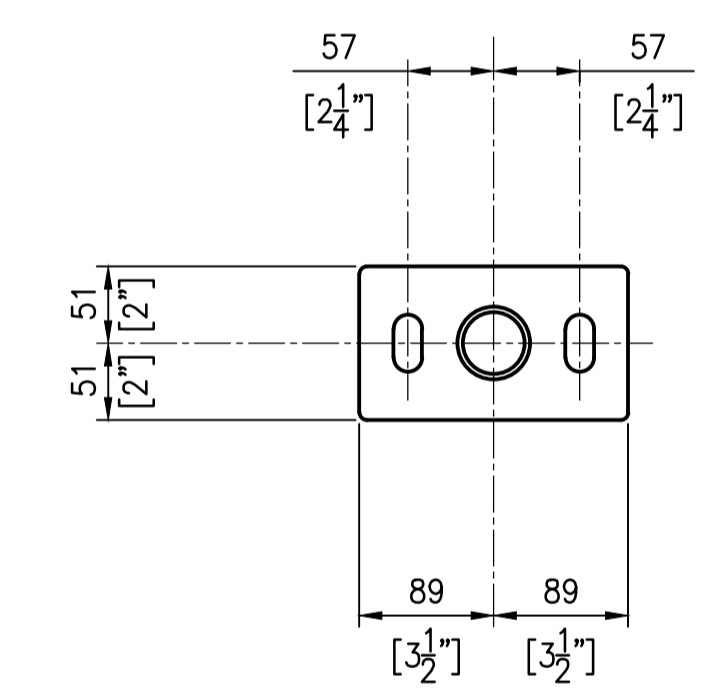
C ELEVATION
SCALE: 1 : 10

HATCHWAY COVER NOT SHOWN FOR CLARITY

D ELEVATION
SCALE: 1 : 10

HATCHWAY COVER NOT SHOWN FOR CLARITY

NOTE: TAKE CARE NOT TO DAMAGE EXIST. CONCRETE REINF. WHEN INSTALLING GUARDRAIL SUPPORTS. REFER TO NOTES ON DRAWING 1-0310U-S0002 FOR INSTALLATION PROCEEDURE.



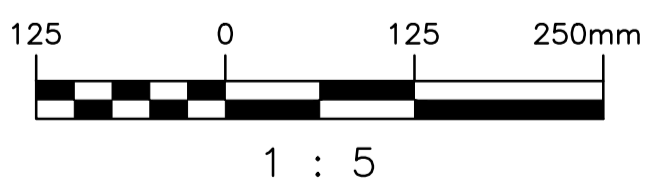
2 DETAIL
SCALE: 1 : 5
(4 REQUIRED)

BASE PLATE DETAILS

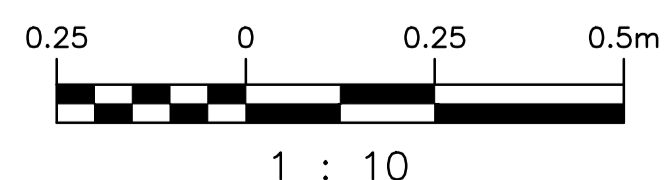
SCALE: 1 : 5

ALL 10mm (3/8") PLATE
C/W 5 RAD. ROUNDED CORNERS
ALL 19mm x 38mm (3/4" x 1 1/2") SLOTTED
HOLES FOR 16 (3/8")
HILTI KB3 304 S.S. ANCHORS (TYP.)
MIN. CONC. EMBEDMENT - 125mm (5")

NOTE - LOCATE HANDRAIL MOUNTING PLATES AS REQUIRED TO CLEAR EXIST. CONCRETE REINFORCING (TYP.)



B-5515-11	PUMP STATION MISCELLANEOUS METAL
B-5515-7	PUMP STATION SECTIONS
B-5515-6	PUMP STATION FLOOR PLANS
B-5515-5	PUMP STATION SUPERSTRUCTURE
DRAWING NUMBER	REFERENCE DRAWINGS



00	ISSUED FOR TENDER, BID OPP. 767-2016	2016/08/23	KK	DC
NO.	REVISIONS	DATE	DESIGN	CHECK

<p>SNC-LAVALIN INC. 148 Nature Park Way Winnipeg, MB, Canada R3P 0X7 204-786-8080</p>		ENGINEER'S SEAL ORIGINAL DRAWING SEALED BY: K. KOTYK SNC-LAVALIN INC. MEMBER # 21950 2016/08/24 REV. 00
DESIGNED BY: K. KOTYK DRAWN BY: B. DICKSON SCALE: AS SHOWN DATE: 2016/05/22	CHECKED BY: D. COATES APPROVED BY: I. PARKINSON ISSUED FOR CONSTRUCTION BY: K. ZUREK DATE: 2016/08/24	CONSULTANT NO.:

<p>THE CITY OF WINNIPEG WATER AND WASTE DEPARTMENT</p>	
ROUTE 90 UNDERPASS PUMPING STATION 2016 UPGRADES DETAILS HATCH COVER MODIFICATIONS	
CITY DRAWING NUMBER 1-0310U-S0003	SHEET 001
REV. 00	SIZE A1