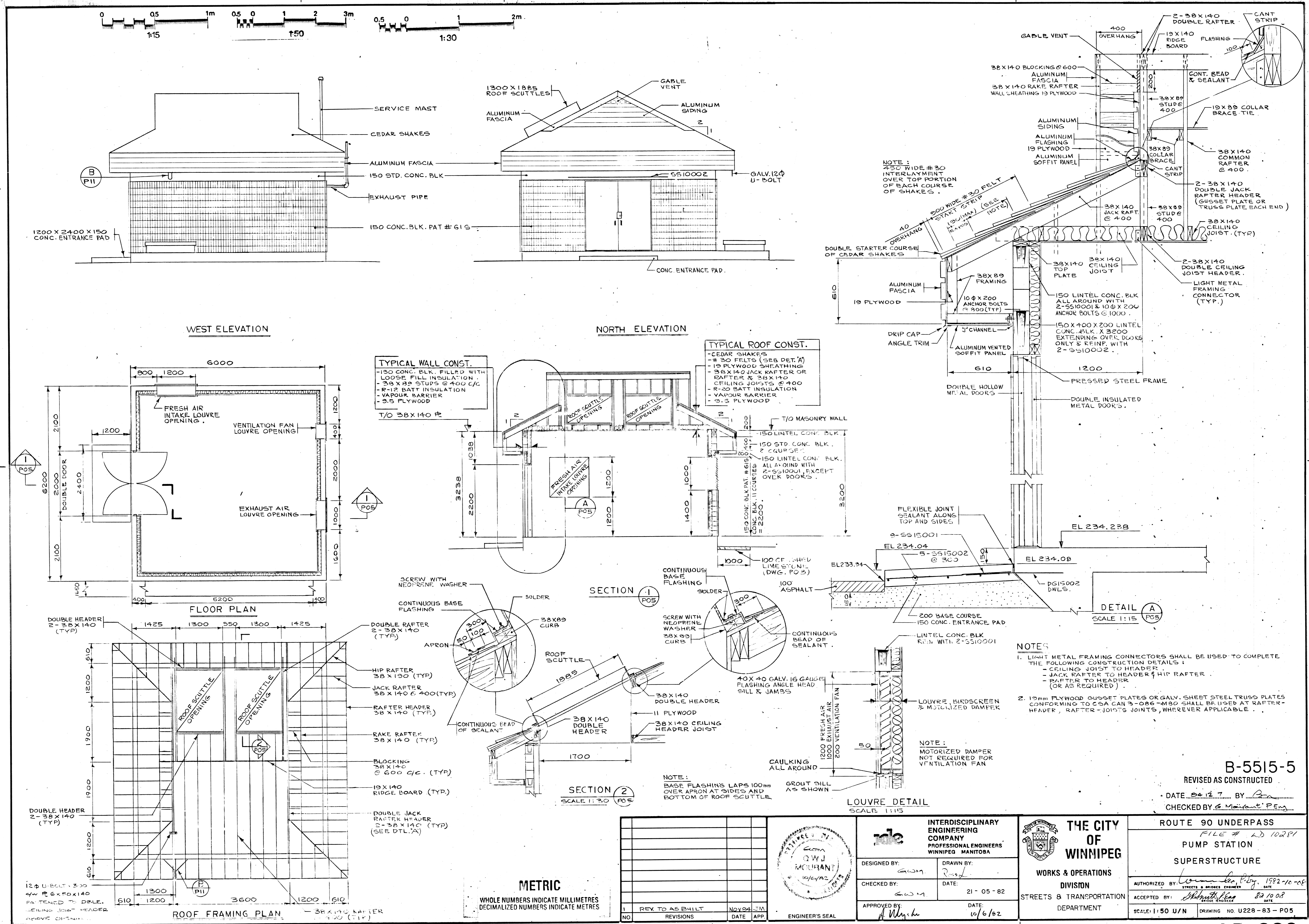


REF. or DRAWING No. **LD-883**
 FILE # **LD 10281**
 DETAILS

Hughes-Owens (Manitoba) 1985 Ltd.



METRIC
 WHOLE NUMBERS INDICATE MILLIMETRES
 DECIMALIZED NUMBERS INDICATE METRES

NO.	REV. TO AS BUILT	DATE	APP.
1	REV. TO AS BUILT	NOV 24 82	JM

INTERDISCIPLINARY ENGINEERING COMPANY
 PROFESSIONAL ENGINEERS
 WINNIPEG MANITOBA

DESIGNED BY: GJM
 DRAWN BY: R. Smith
 CHECKED BY: GJM
 DATE: 21-05-82
 APPROVED BY: A. M. Smith
 DATE: 10/6/82

THE CITY OF WINNIPEG
 WORKS & OPERATIONS
 DIVISION
 STREETS & TRANSPORTATION
 DEPARTMENT

ROUTE 90 UNDERPASS
 FILE # LD 10281
 PUMP STATION
 SUPERSTRUCTURE

AUTHORIZED BY: [Signature] 1982-10-08
 ACCEPTED BY: [Signature] 82/10/08
 SCALE: 1:50 U/N
 DRAWING NO. U228-83-P05

B-5515-5
 REVISED AS CONSTRUCTED
 DATE 04/27 BY [Signature]
 CHECKED BY [Signature]