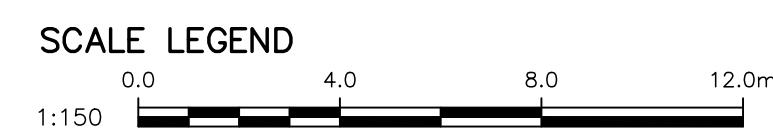


SECTION THROUGH CENTERLINE OF EXISTING 2 700 Ø SRS PIPE

VERTICAL 1:37.5  
HORIZONTAL 1:150

NOTE:  
ALL ELEVATIONS ARE ± UNTIL CONFIRMED ON SITE



**METRIC**  
WHOLE NUMBERS INDICATE MILLIMETRES  
DECIMALIZED NUMBERS INDICATE METRES

**APEGM**  
Certificate of Authorization  
MMM Group Limited  
No. 4531

**MMM GROUP**

DESIGNED BY: BB/MRI  
DRAWN BY: KD  
HOR. SCALE: AS NOTED  
VERTICAL SCALE: AS NOTED  
DATE: 13/09/2016

CHECKED BY: EH  
APPROVED BY: JPL  
RELEASED FOR CONSTRUCTION  
DATE:

MMM Group Limited.  
Suite 111 - 93 Lombard Ave.  
Winnipeg, MB R3B 3B1  
t. 204.943.3178  
f. 204.943.4948  
www.mmm.ca

ENGINEER  
PROVINCE OF MANITOBA  
Sep 14 2016  
R.B. BOWLES  
REGISTERED PROFESSIONAL ENGINEER

**THE CITY OF WINNIPEG**  
WATER AND WASTE DEPARTMENT

OUTFALL GATE CHAMBER UPGRADES  
RUBY STREET  
SRS OUTFALL GATE CHAMBER

CONSULTANT DRAWING NUMBER: 5516047 - C02  
SHEET 3 OF 34  
CITY DRAWING NUMBER: LD-7924

SRS PROFILE

BID OPPORTUNITY: 789-2016  
PLOT DATE: 14/09/2016

Sep 14, 2016 - 9:32am  
 C:\Users\5516047-5516047 - Ruby & Ruby Chamber Upgrades\MM Group\Drawings\5516047 DO Gate Chambers - Ruby Upgrades\_C01\_C02\_C03\_Site plan.dwg - tab:02

NOTE:  
These design documents are prepared solely for the use by the party with whom the design professional has entered into a contract and there are no representations of any kind made by the design professional to any party with whom the design professional has not entered into a contract.