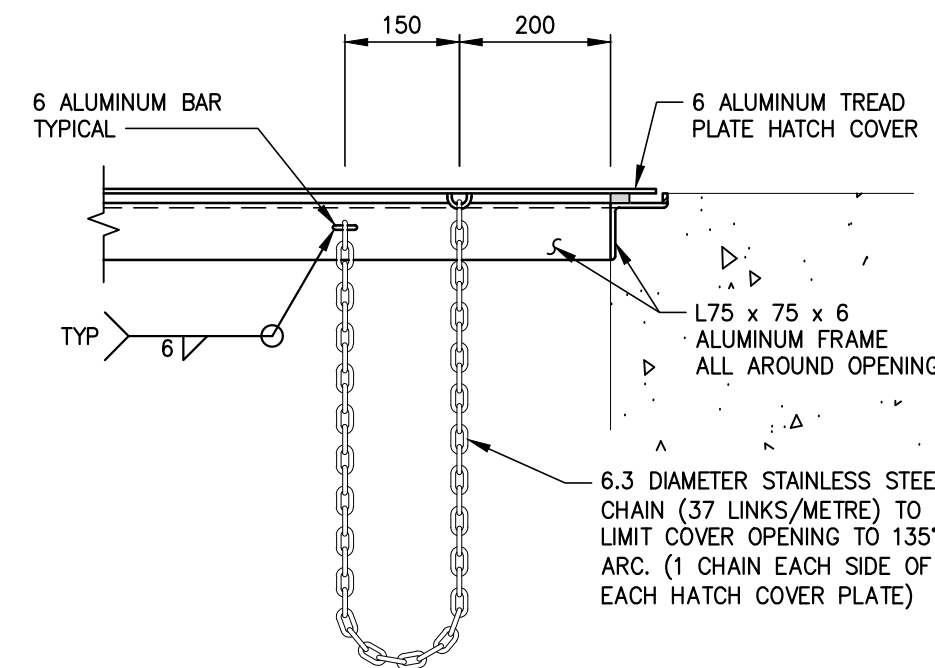
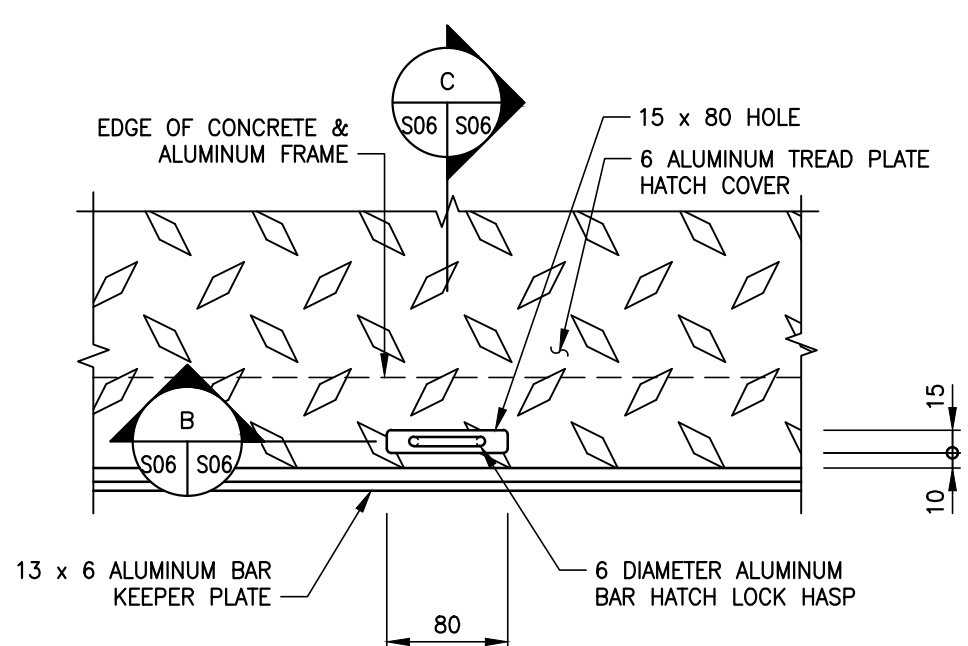


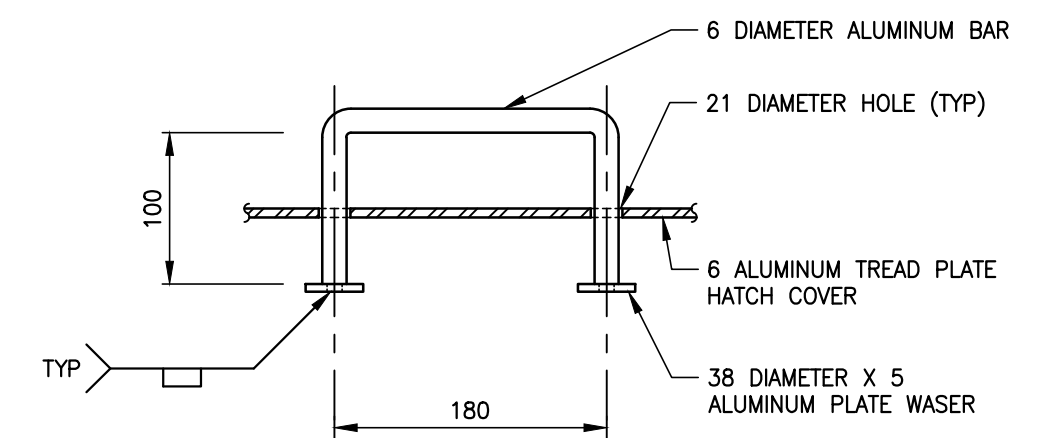
**VALVE BOX DETAIL** 1  
1:10 S01 S06



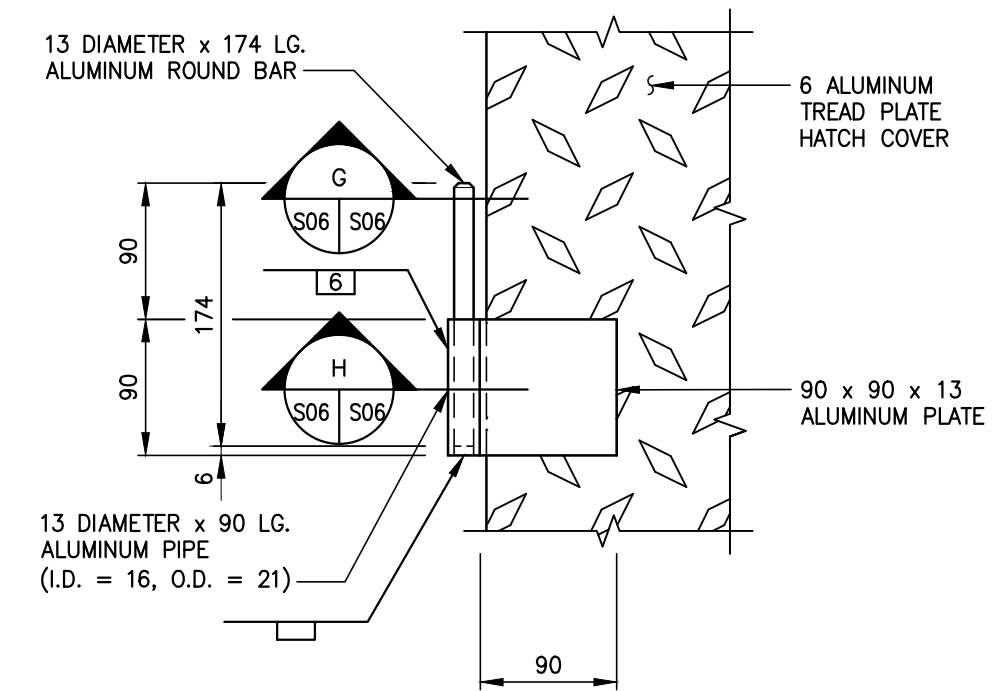
**HATCH COVER CHAIN SECTION** A  
1:10 S05 S06



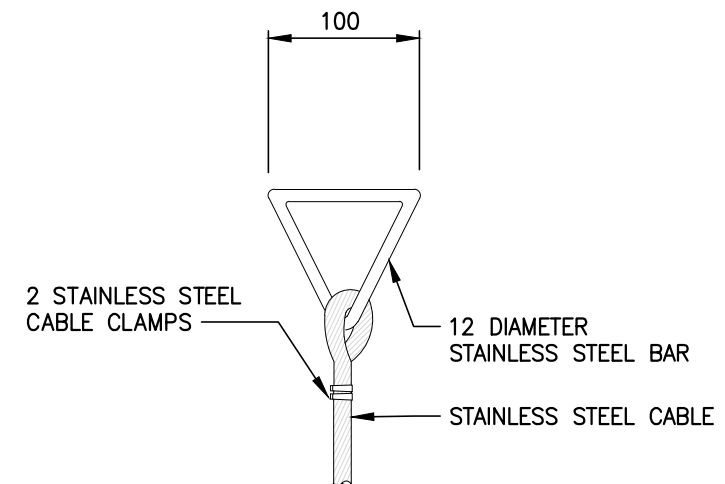
**HATCH LOCK HASP DETAIL** 5  
1:5 S05 S06



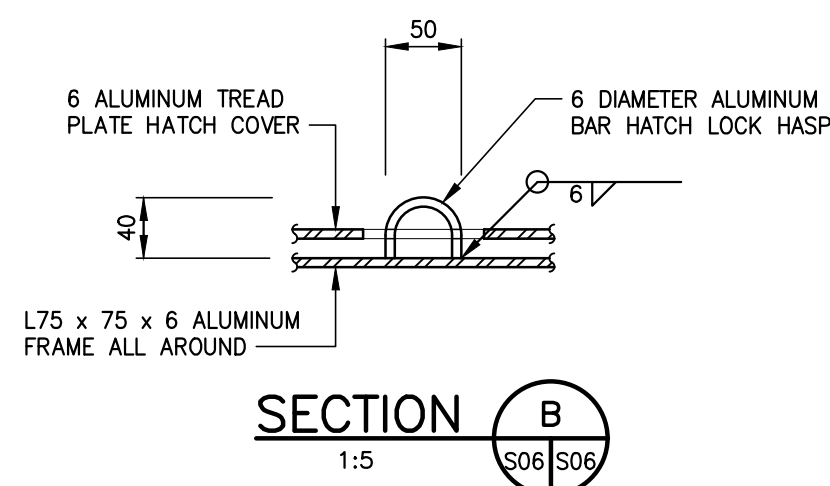
**SECTION D** D  
1:5 S05 S06



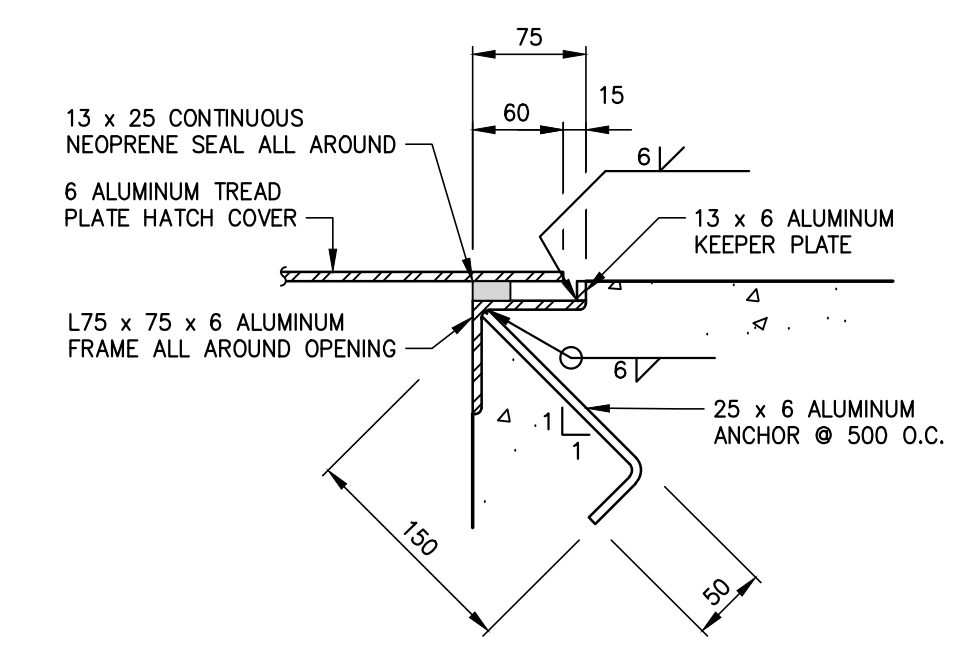
**HINGE DETAIL** 6  
1:5 S05 S06



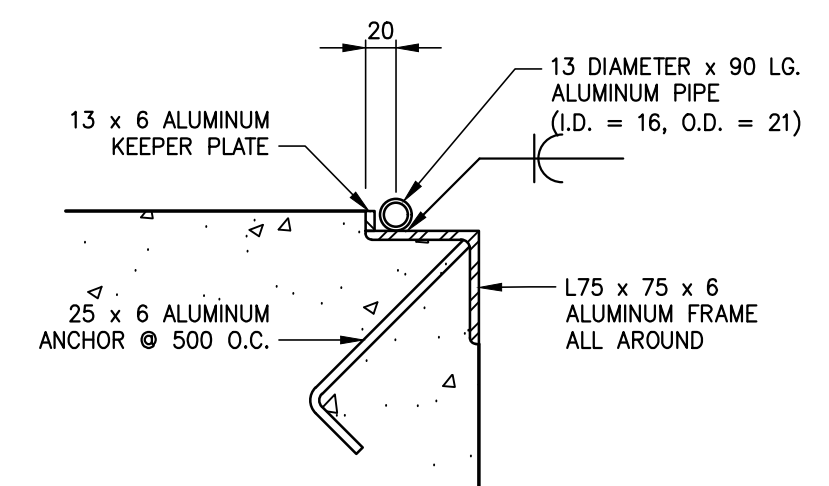
**LIFTING RING DETAIL** 2  
1:5 S01 S06



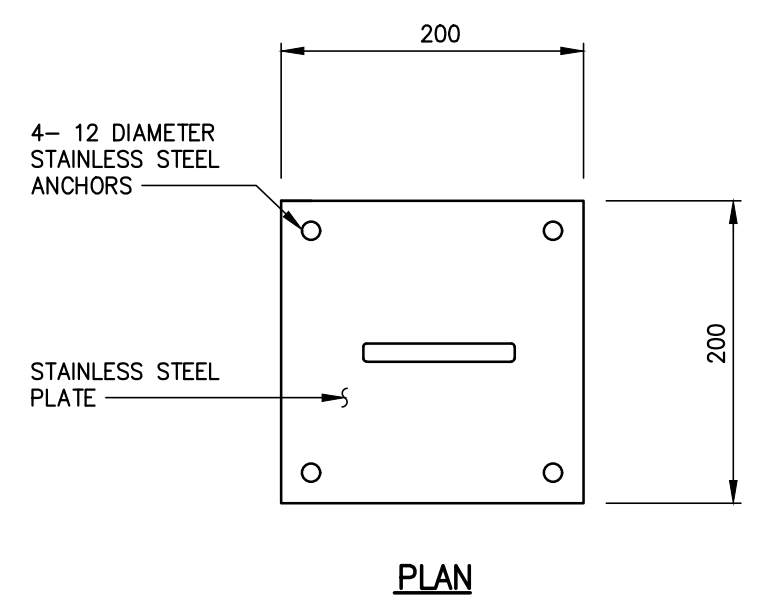
**SECTION B** B  
1:5 S06 S06



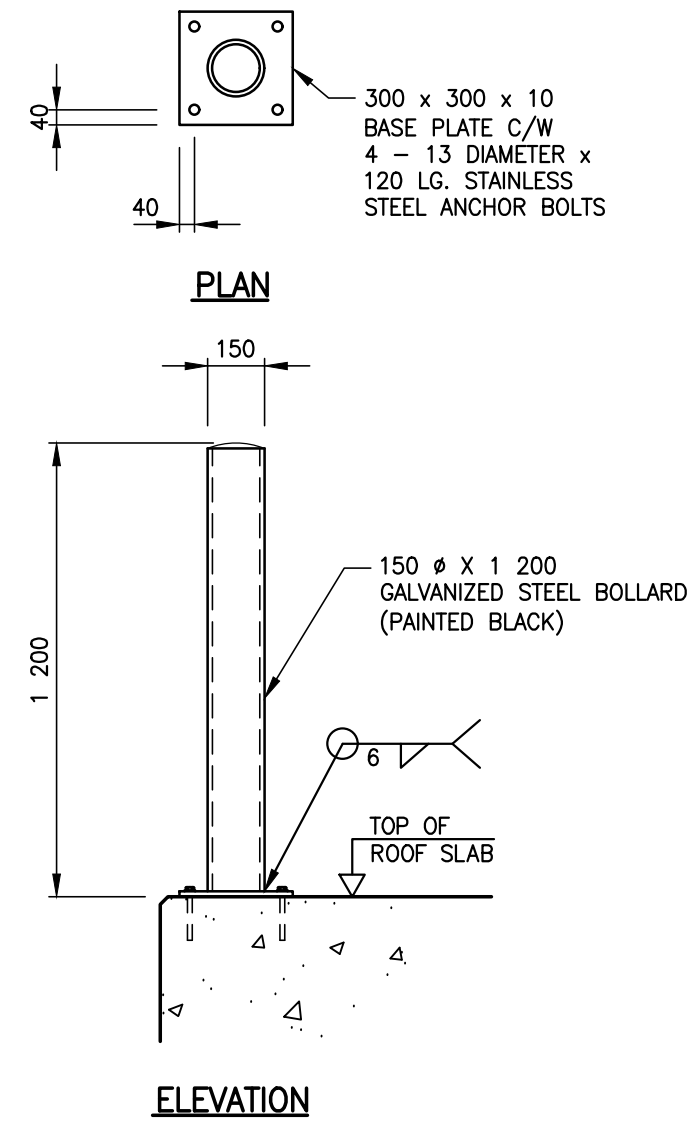
**HATCH COVER SUPPORT SECTION** E  
1:5 S05 S06



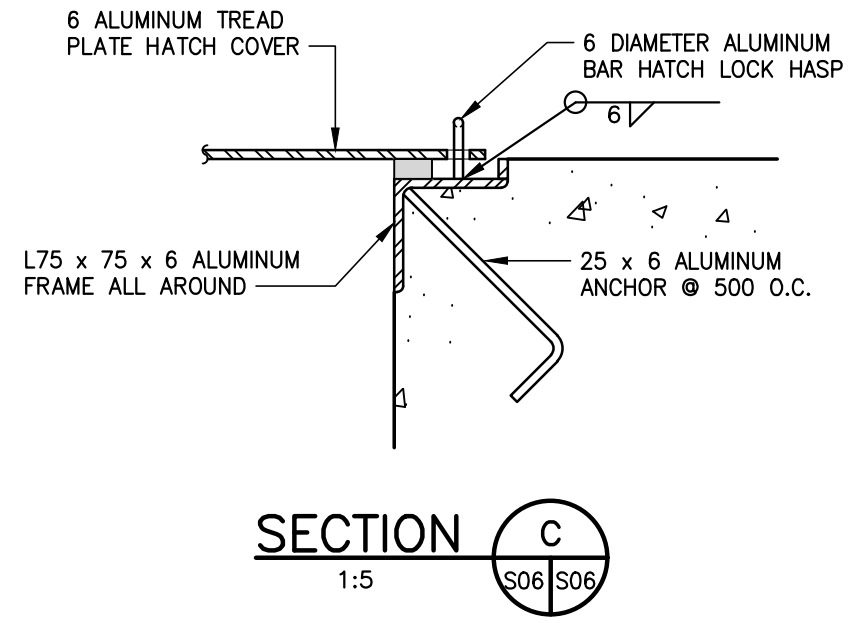
**SECTION C** C  
1:5 S06 S06



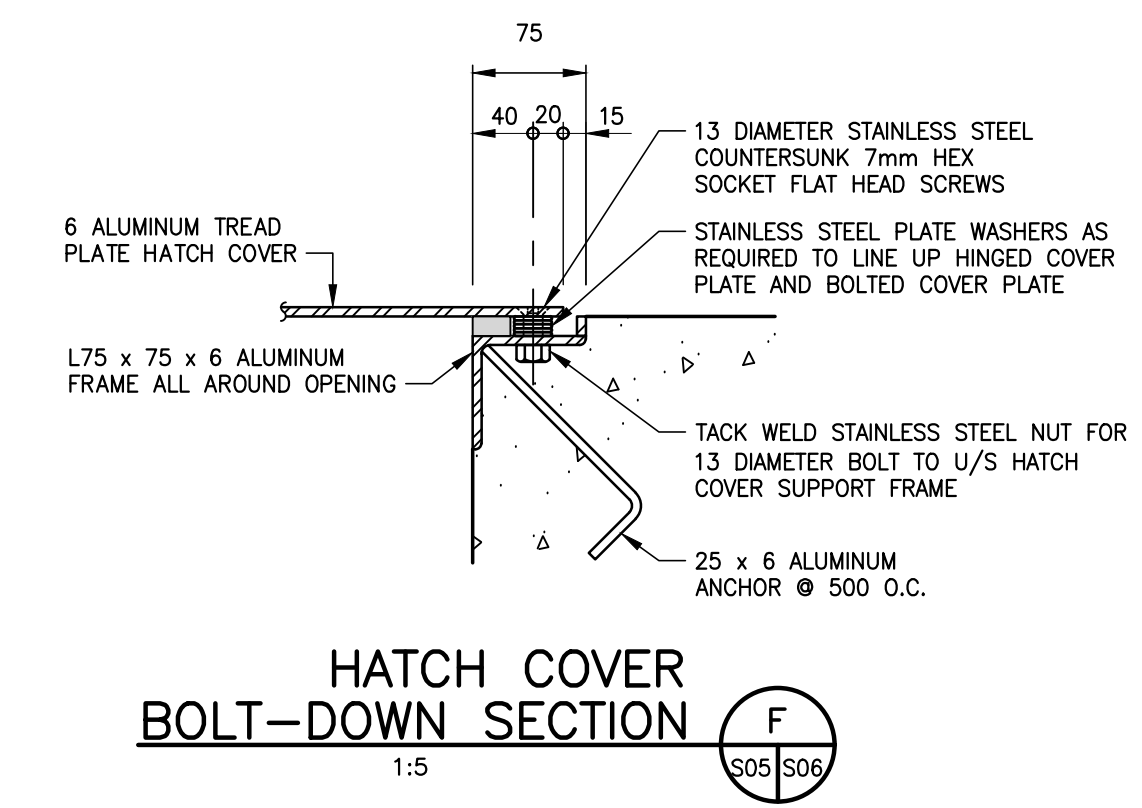
**LIFTING CABLE GUIDE** 3  
1:5 S01 S06



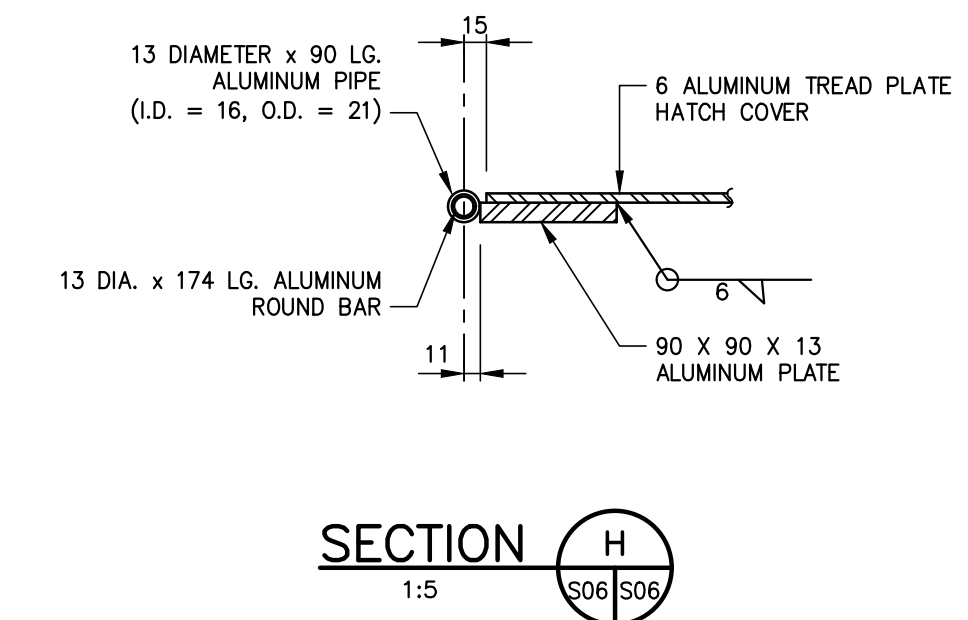
**BOLLARD DETAIL** 4  
1:20 S01 S06



**SECTION C** C  
1:5 S06 S06



**HATCH COVER BOLT-DOWN SECTION** F  
1:5 S05 S06



**SECTION H** H  
1:5 S06 S06

Sep 13, 2016 - 3:19pm  
 C:\Users\m001-5316298\Documents\5516047 - Ruby & Aubrey Chamber Upgrades\MMI Drawings\5516047 - DO Gate Chambers - Ruby Upgrades\_S05, S06\_Steel.dwg - Job: S06 access hatch details (sheet 2 of 2)

NOTE: These design documents are prepared solely for the use by the party with whom the design professional has entered into a contract and there are no representations of any kind made by the design professional to any party with whom the design professional has not entered into a contract.

**METRIC**  
 WHOLE NUMBERS INDICATE MILLIMETRES  
 DECIMALIZED NUMBERS INDICATE METRES

**APEGM**  
 Certificate of Authorization  
 MMM Group Limited  
 No. 4531

NO.	REVISIONS	DATE	BY
1	ISSUED FOR TENDER	13/09/16	MRI

**MMM GROUP**

MMM Group Limited  
 Suite 111 - 93 Lombard Ave.  
 Winnipeg, MB R3B 3B1  
 t. 204.943.3178  
 f. 204.943.4948  
 www.mmm.ca

DESIGNED BY: BB/MRI  
 CHECKED BY: EH  
 DRAWN BY: KD  
 APPROVED BY: JPL  
 HOR. SCALE: AS NOTED  
 VERTICAL: AS NOTED  
 RELEASED FOR CONSTRUCTION: 13/09/2016

ENGINEER'S SEAL

PROFESSOR OF MANITOBA  
 M. R. ISLAM  
 Member 36041  
 REGISTERED PROFESSIONAL ENGINEER

BID OPPORTUNITY: 789-2016  
 PLOT DATE: 07/09/2016

**THE CITY OF WINNIPEG**  
 WATER AND WASTE DEPARTMENT

OUTFALL GATE CHAMBER UPGRADES  
 RUBY STREET  
 SRS OUTFALL GATE CHAMBER

ACCESS HATCH DETAILS (SHEET 2 OF 2)

CONSULTANT DRAWING NUMBER: 5516047 - S06  
 SHEET 9 OF 34  
 CITY DRAWING NUMBER: LD-7931