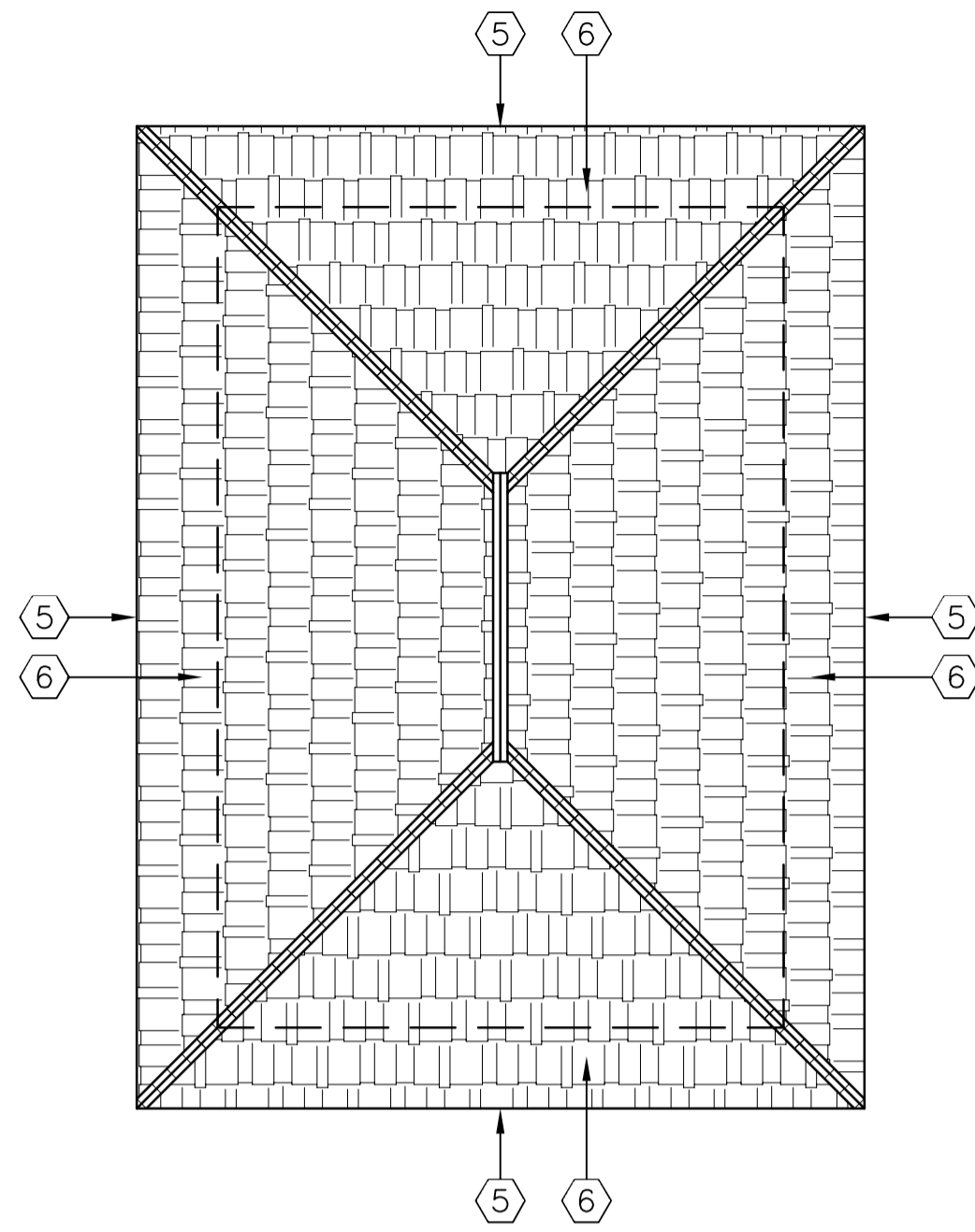
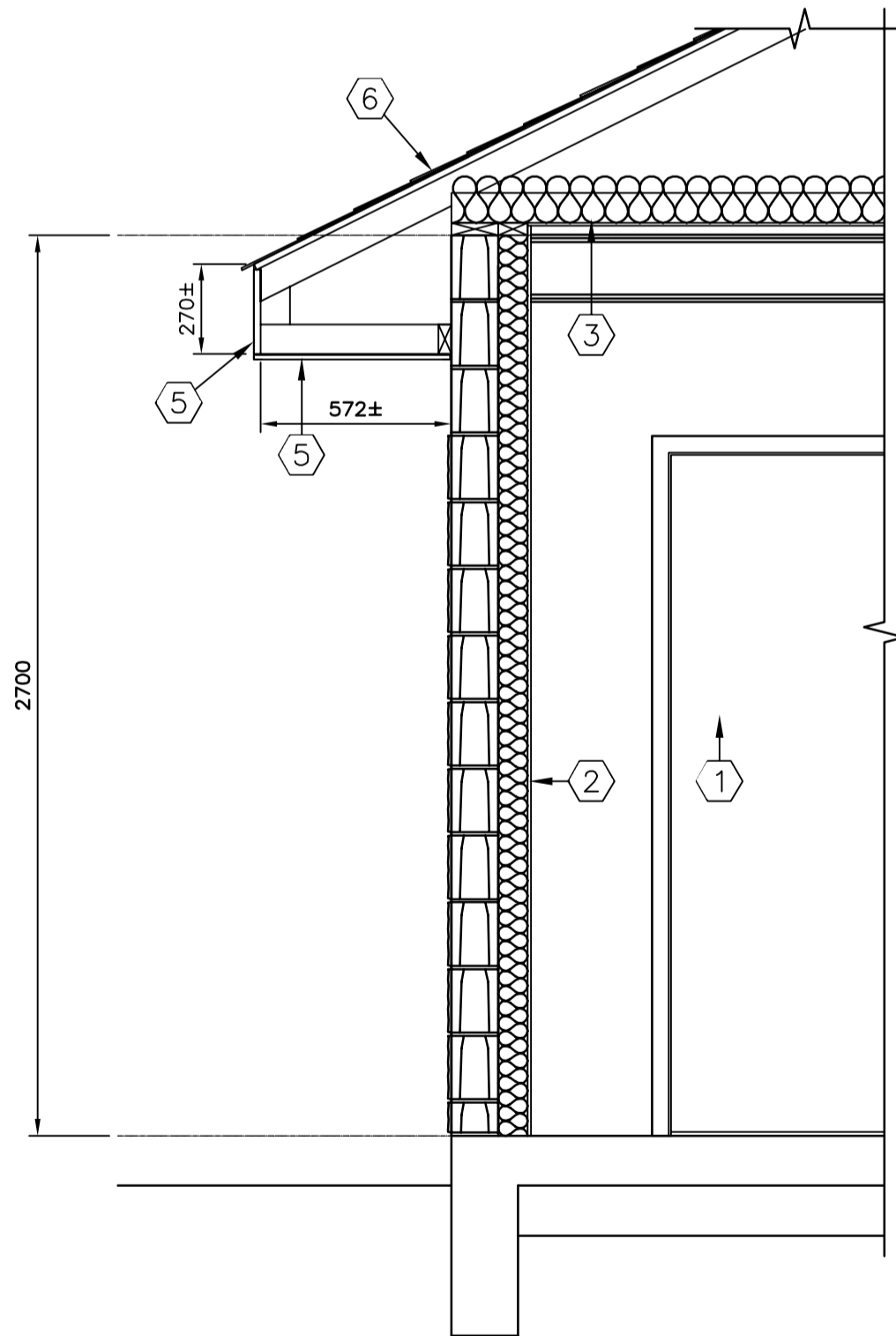


FLOOR PLAN - REMOVALS
1:50

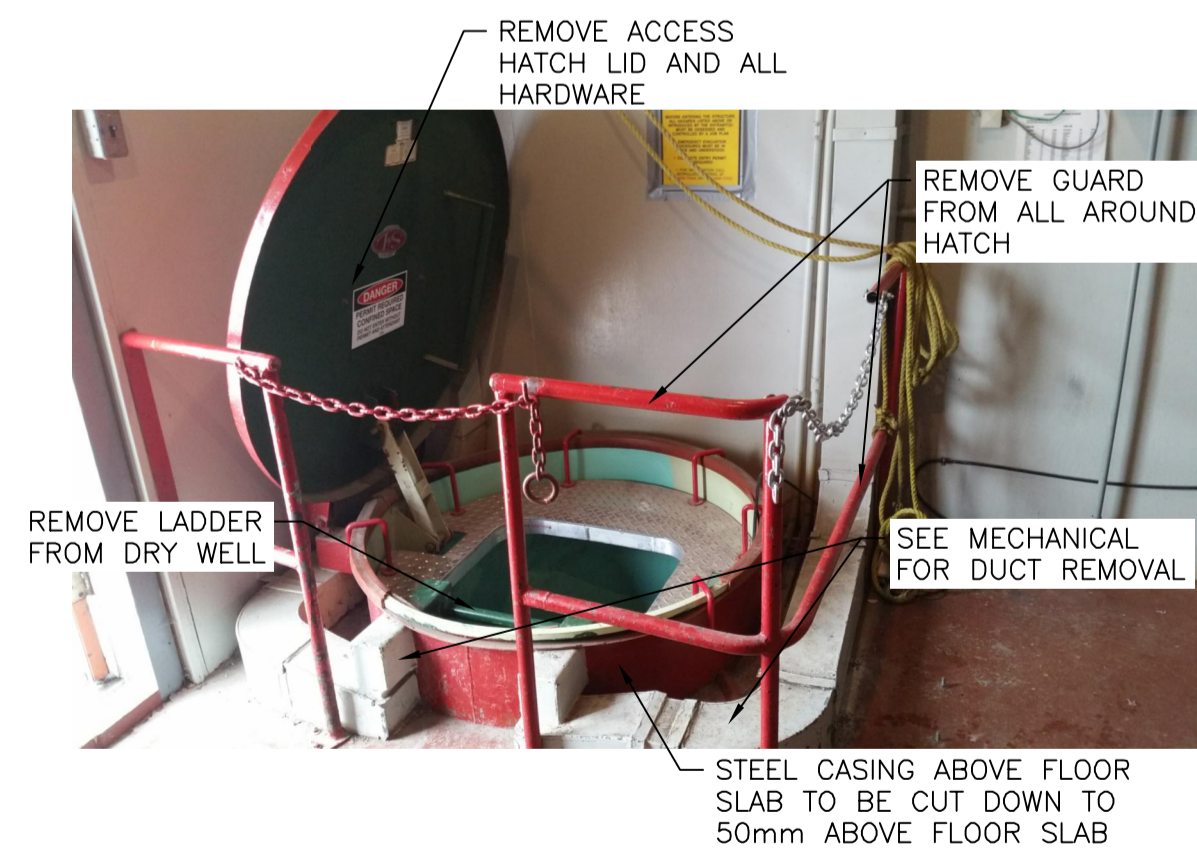


ROOF PLAN - REMOVALS
1:50



1 SECTION
A-1 1:20

DEMOLITION NOTES	
1	REMOVE DOORS, FRAME AND ALL HARDWARE
2	REMOVE INTERIOR WALL FINISHES (PLYWOOD, VAPOUR BARRIER, 38x89 WOOD STUDS AND INSULATION)
3	REMOVE CEILING FINISHES (9.5 PLYWOOD, VAPOUR BARRIER, BATT INSULATION)
4	WORK REQUIRED AT ACCESS HATCH TO DRY WELL: - REMOVE ACCESS HATCH LID - REMOVE GUARD AT ACCESS HATCH - REMOVE ACCESS PLATFORM INSIDE TUBE AT TOP OF LADDER. - REMOVE LADDER TO BOTTOM OF DRY WELL. - CUT TOP OF ACCESS TUBE OFF AT 50mm A.F.F., GRINDING CUT EDGE SMOOTH.
5	REMOVE PRE-FINISHED VENTED SOFFIT AND METAL FASCIA.
6	REMOVE CEDAR SHAKE SHINGLES, RIDGE CAPS AND FELT PAPER. REPLACED DAMAGED PLYWOOD SHEATHING.

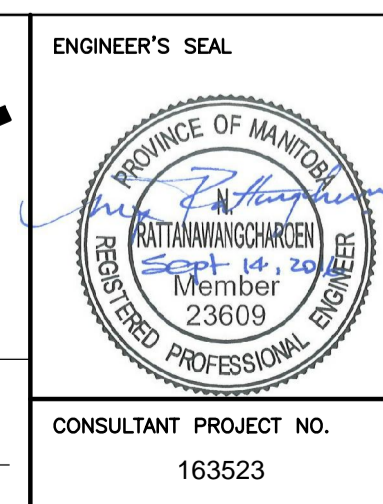
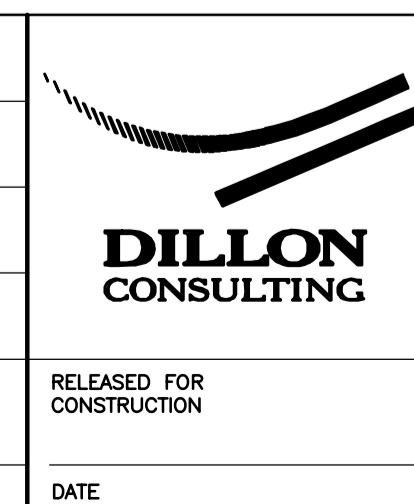


A REMOVALS AT ACCESS POINT TO DRY WELL
NOT TO SCALE



B.M. ELEV.	DESIGNED BY	DATE		
	JAA			
	DRAWN BY	PDR		
	CHECKED BY	-		
	APPROVED BY	-		
	HOR. SCALE	AS SHOWN		
	VERTICAL	AS SHOWN		
0	ISSUED FOR BID OP. 803-2016	16-09-14 NR		
NO.	REVISIONS	DATE	BY	DATE

RELEASED FOR CONSTRUCTION	DATE
---------------------------	------



THE CITY OF WINNIPEG
WATER AND WASTE DEPARTMENT

Winnipeg

BURROWS AVENUE
PUMPING STATION UPGRADES
ARCHITECTURAL REHABILITATION
STAGE 1 - REMOVALS

CITY DRAWING NUMBER
1-0121L-B0001-001

SHEET 2 OF 16

A-1