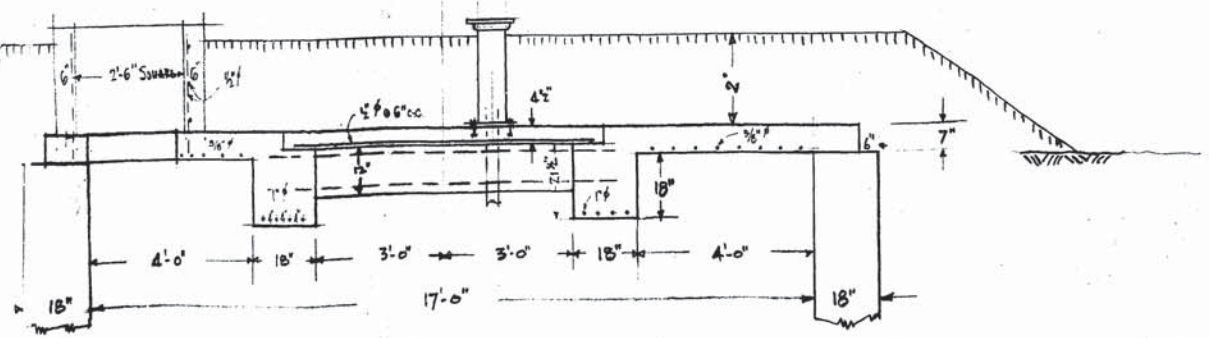
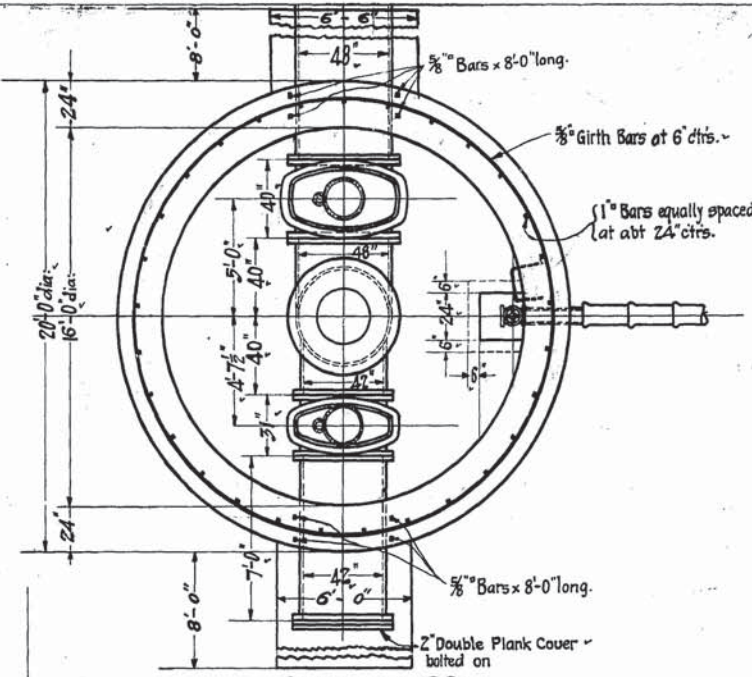


Straight Bars

pc	5/8" φ	x
1		11'
9		10'
1		8'
1		6'
6		4'
3		3'-6"
1		2'-6"
3	1/2" φ	7'-0"
5		12'-0"
8		2'-6"



GREATER WINNIPEG WATER DISTRICT
 CONCRETE COVER FOR EAST
 TUNNEL SHAFT
 MAY 1944 SCALE 3/8" = 1'-0"

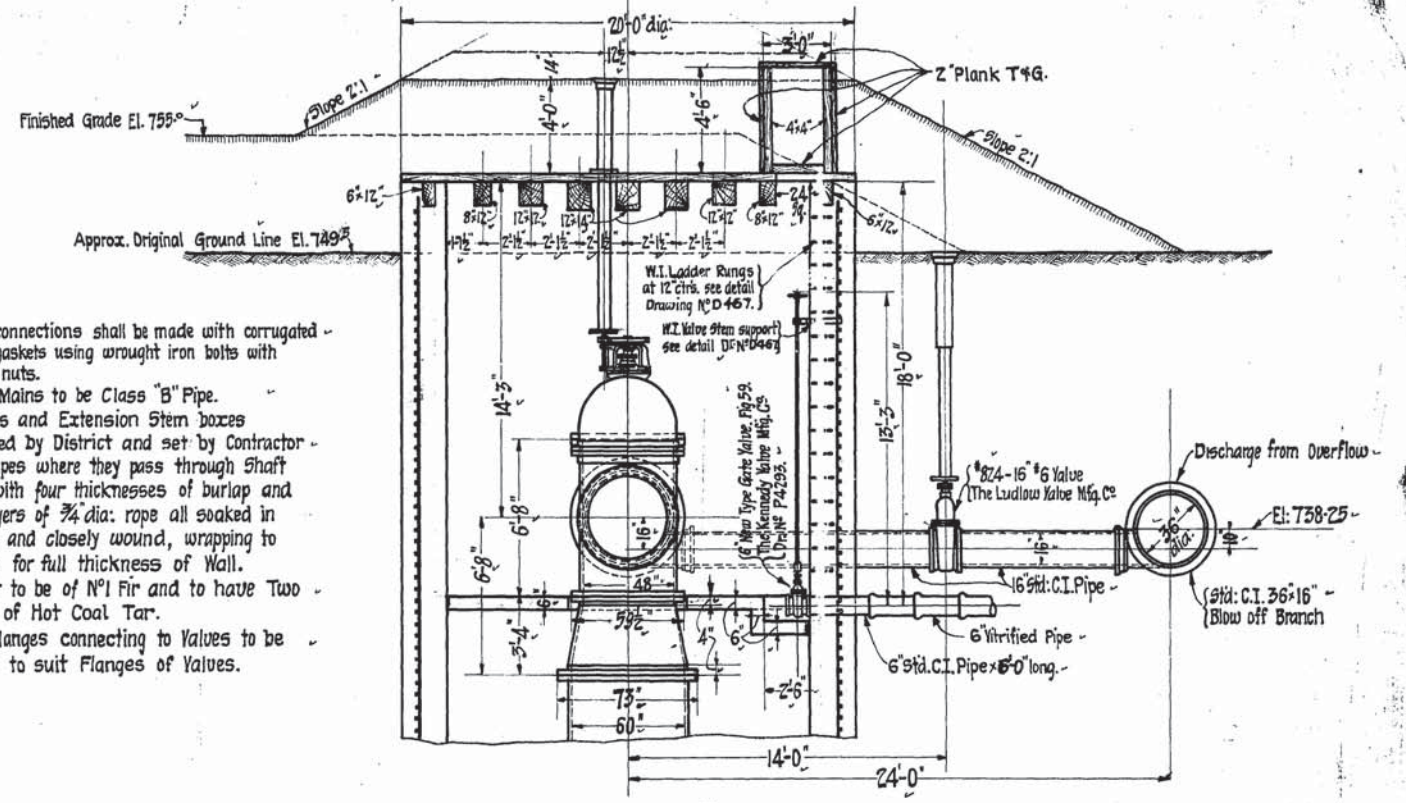


Bill of Reinforcing Steel.

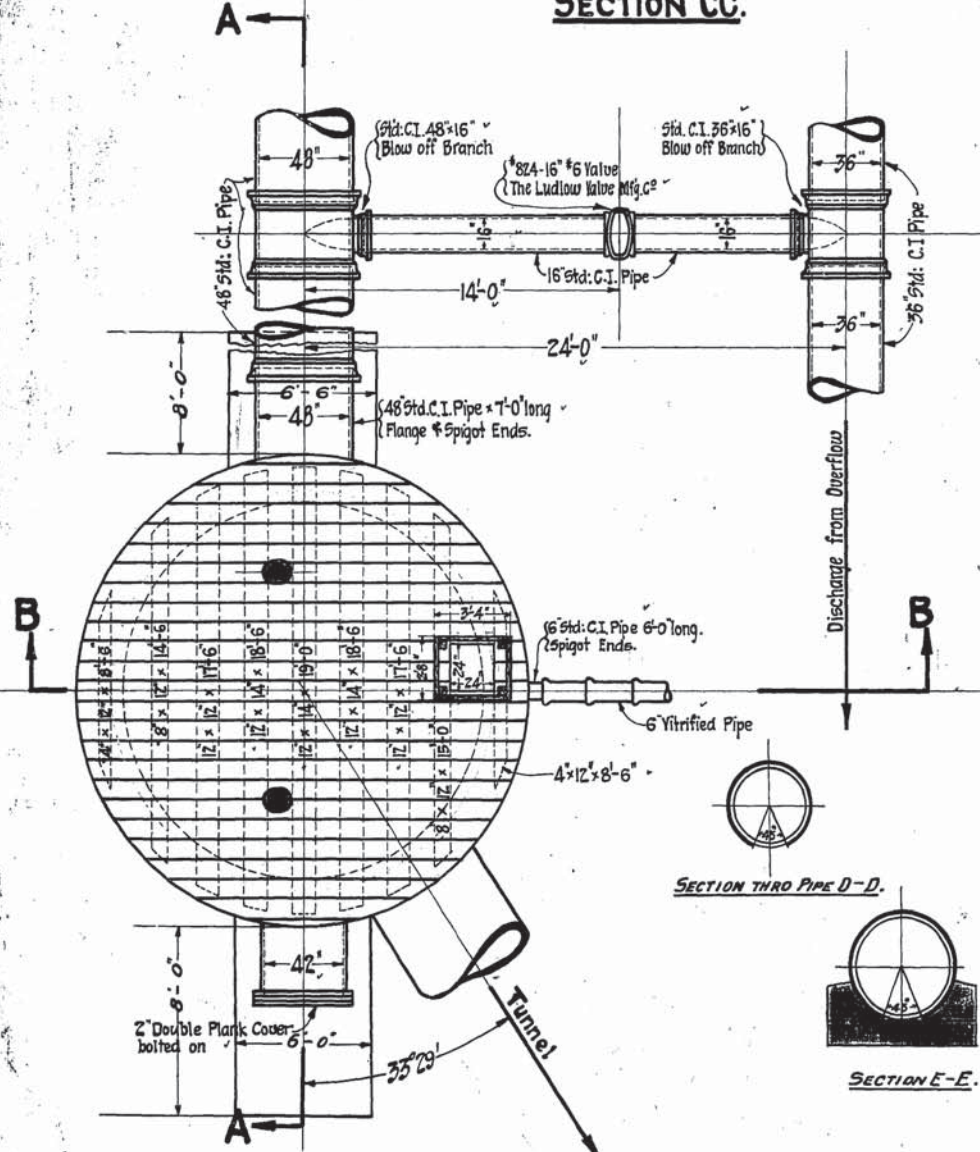
No	Size	Length	Description.
203	1"	10'-6"	Straight.
335	3/8"	24'-0"	Bent to 18'-6" dia. Ring.
8	3/8"	8'-0"	Straight.

This bill based on the assumption that Shaft will be built in Seven 8 foot Lifts.

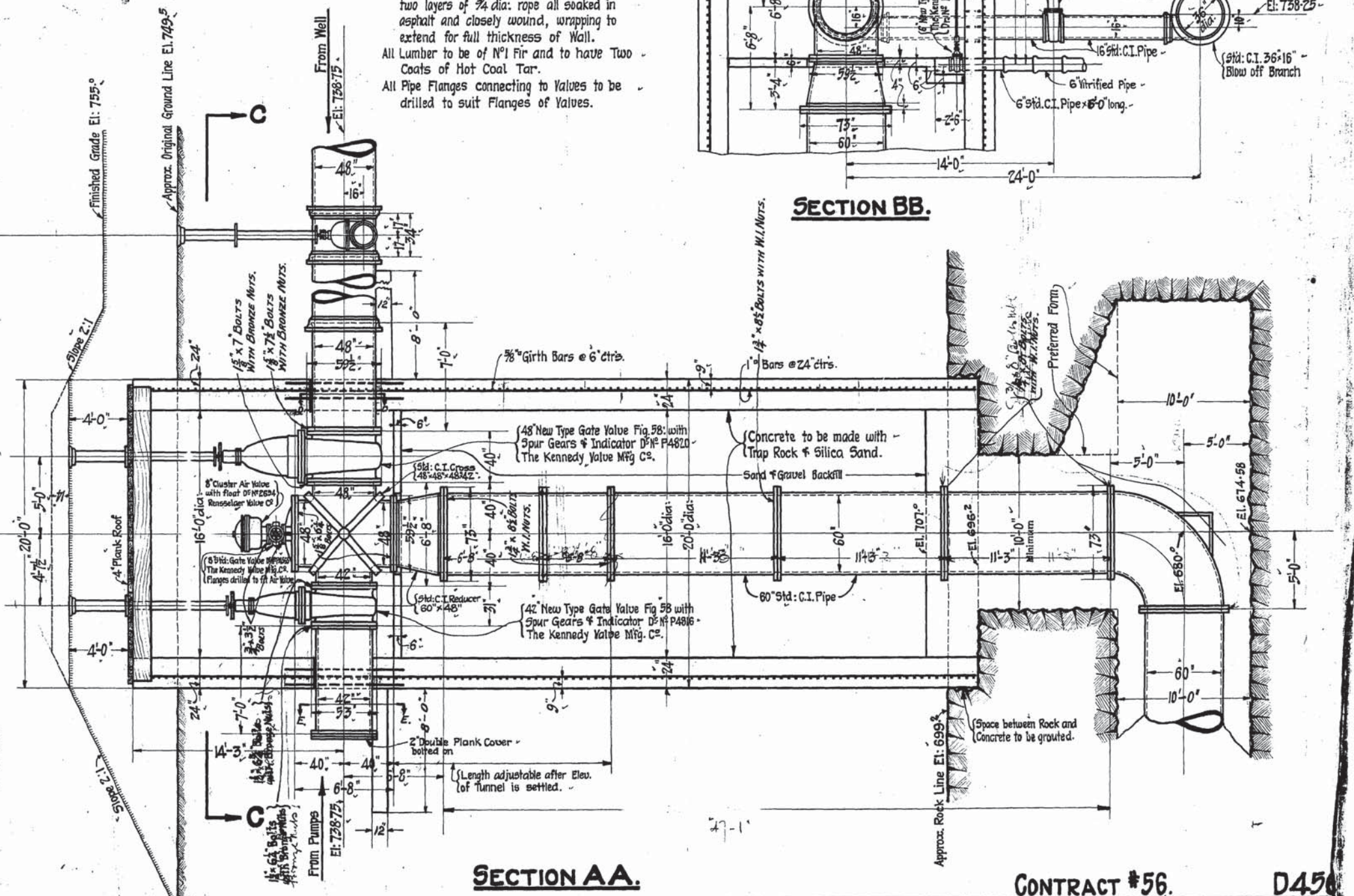
NOTE:-
 All flange connections shall be made with corrugated copper gaskets using wrought iron bolts with bronze nuts.
 All Water Mains to be Class "B" Pipe.
 Gate Valves and Extension Stem boxes furnished by District and set by Contractor -
 Wrap all pipes where they pass through Shaft Walls with four thicknesses of burlap and two layers of 3/4" dia: rope all soaked in asphalt and closely wound, wrapping to extend for full thickness of Wall.
 All Lumber to be of No 1 Fir and to have Two Coats of Hot Coal Tar.
 All Pipe Flanges connecting to Valves to be drilled to suit Flanges of Valves.



SECTION BB.



PLAN



SECTION AA.

Drawn By: *[Signature]*
 Traced By: *[Signature]*
 Checked By: *[Signature]*
 Approved: _____
 Ground Elevation Revised see J.A. letter Mar. 5th 1918. 776.

James H. Fuentis
 CONSULTING ENGINEER.
W. Schaefer
 CHIEF ENGINEER.

CONTRACT #56. D456
GREATER WINNIPEG WATER DISTRICT
 RED RIVER TUNNEL
 EAST SHAFT.
 Date: 24/1/1918. Scale: 1/4" = 1'-0"