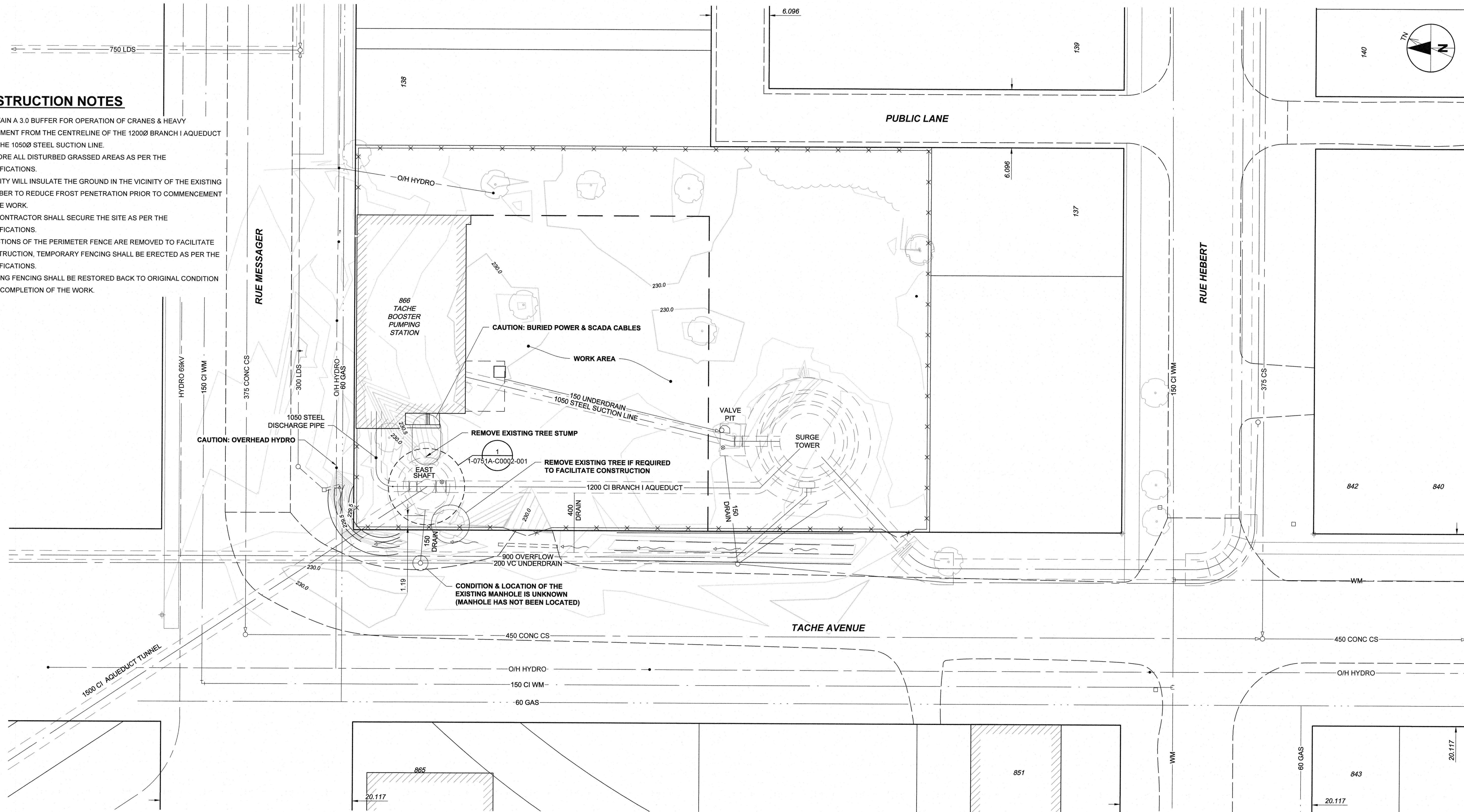
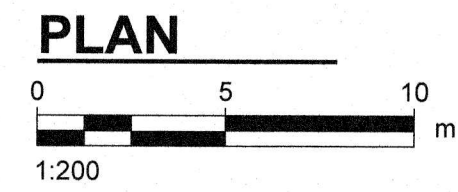


CONSTRUCTION NOTES

1. MAINTAIN A 3.0 BUFFER FOR OPERATION OF CRANES & HEAVY EQUIPMENT FROM THE CENTRELINE OF THE 1200Ø BRANCH I AQUEDUCT AND THE 1050Ø STEEL SUCTION LINE.
2. RESTORE ALL DISTURBED GRASSED AREAS AS PER THE SPECIFICATIONS.
3. THE CITY WILL INSULATE THE GROUND IN THE VICINITY OF THE EXISTING CHAMBER TO REDUCE FROST PENETRATION PRIOR TO COMMENCEMENT OF THE WORK.
4. THE CONTRACTOR SHALL SECURE THE SITE AS PER THE SPECIFICATIONS.
5. IF SECTIONS OF THE PERIMETER FENCE ARE REMOVED TO FACILITATE CONSTRUCTION, TEMPORARY FENCING SHALL BE ERECTED AS PER THE SPECIFICATIONS.
6. EXISTING FENCING SHALL BE RESTORED BACK TO ORIGINAL CONDITION UPON COMPLETION OF THE WORK.



NOTICE:
 THE EXISTENCE, LOCATION AND ELEVATION OF UTILITIES AND/OR CONCEALED STRUCTURES AT THE PROJECT SITE ARE NOT GUARANTEED BY AECOM CANADA LTD.
 THE CONTRACTOR IS RESPONSIBLE FOR DETERMINING THE EXISTENCE, LOCATION AND ELEVATION OF ALL SUCH UTILITIES AND/OR STRUCTURES AND IS RESPONSIBLE FOR NOTIFYING THE APPROPRIATE COMPANY, DEPARTMENT OR PERSON(S) OF ITS INTENTION TO CARRY OUT ITS OPERATIONS.



METRIC
 WHOLE NUMBERS INDICATE MILLIMETRES
 DECIMALIZED NUMBERS INDICATE METRES



BID OPPORTUNITY NO. 805-2016

150 WM	WATERMAIN	150 WM	○	CURB STOP	○	150 WM	WATERMAIN	150 WM	+
○	HYDRANT	●	○	REDUCER	○	+	HYDRANT	+	+
⊙	VALVE	○	○	COUPLING	○	○	VALVE	○	○
300 LDS	LAND DRAINAGE SEWER	300 LDS	○	ANODE	○	○	LAND DRAINAGE SEWER	○	○
250 WWS	WASTE WATER SEWER	250 WWS	○	HYDRO	○	○	WASTE WATER SEWER	○	○
○	MANHOLE	●	○	MTS	○	○	PAVEMENT CROWN	○	○
△	CATCH BASIN	■	○	GAS	○	○	N/W PROPERTY LINE	○	○
△	CURB INLET	■	○	TESTHOLE	○	○	S/E PROPERTY LINE	○	○
○	CULVERT	○	○	LAMP STANDARD	○	○	N/W GUTTER	○	○
○	PIPE ABANDONMENTS	○	○	TREE	○	○	S/E GUTTER	○	○
○	SURVEY BAR	○	○		○	○		○	○
○	EXISTING	○	○	EXISTING	○	○	EXISTING	○	○
○	LEGEND - PLAN	○	○	LEGEND - PLAN	○	○	LEGEND - PROFILE	○	○
○	NEW	○	○	NEW	○	○	NEW	○	○

LOCATION APPROVED
 UNDERGROUND STRUCTURES

SUPR. U/G STRUCTURES	DATE

NOTE:
 LOCATION OF UNDERGROUND STRUCTURES AS SHOWN ARE BASED ON THE BEST INFORMATION AVAILABLE. BUT NO GUARANTEE IS GIVEN THAT ALL EXISTING UTILITIES ARE SHOWN OR THAT THE GIVEN LOCATIONS ARE EXACT. CONFIRMATION OF EXISTENCE AND EXACT LOCATION OF ALL SERVICES MUST BE OBTAINED FROM THE INDIVIDUAL UTILITIES BEFORE PROCEEDING WITH CONSTRUCTION.

NO.	ISSUED FOR CONSTRUCTION	16/10/13	KLC
NO.	REVISIONS	BY	DATE

AECOM

DESIGNED BY	ADB	CHECKED BY	
DRAWN BY	ADL	APPROVED BY	
HOR. SCALE	AS NOTED	RELEASED FOR CONSTRUCTION	
VERT. SCALE	N/A	DATE	Oct 13/2016



THE CITY OF WINNIPEG
WATER AND WASTE DEPARTMENT

BRANCH I AQUEDUCT EAST TUNNEL SHAFT UPGRADES

SITE PLAN

SHEET 2 OF 8
 CITY DRAWING NUMBER
 REV
 1-0751A-C0001-001 0