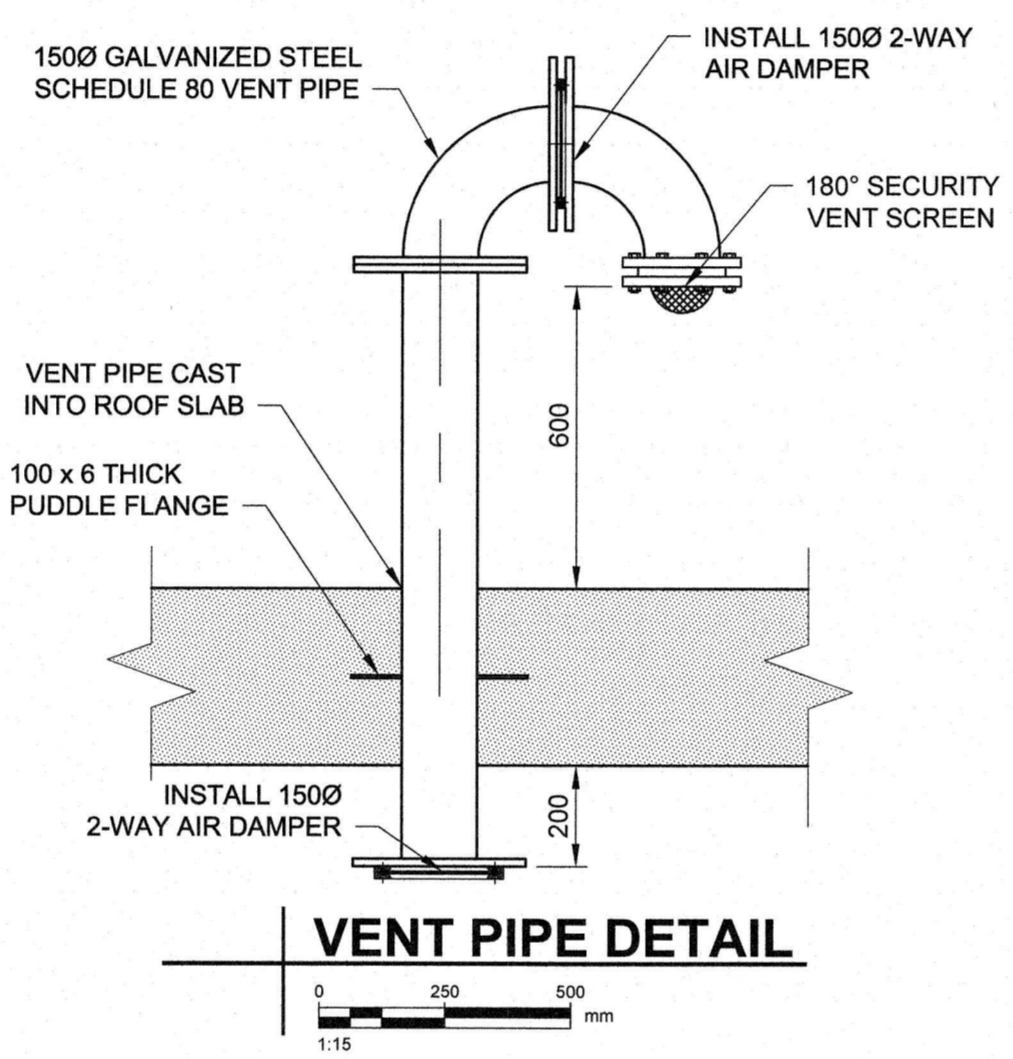
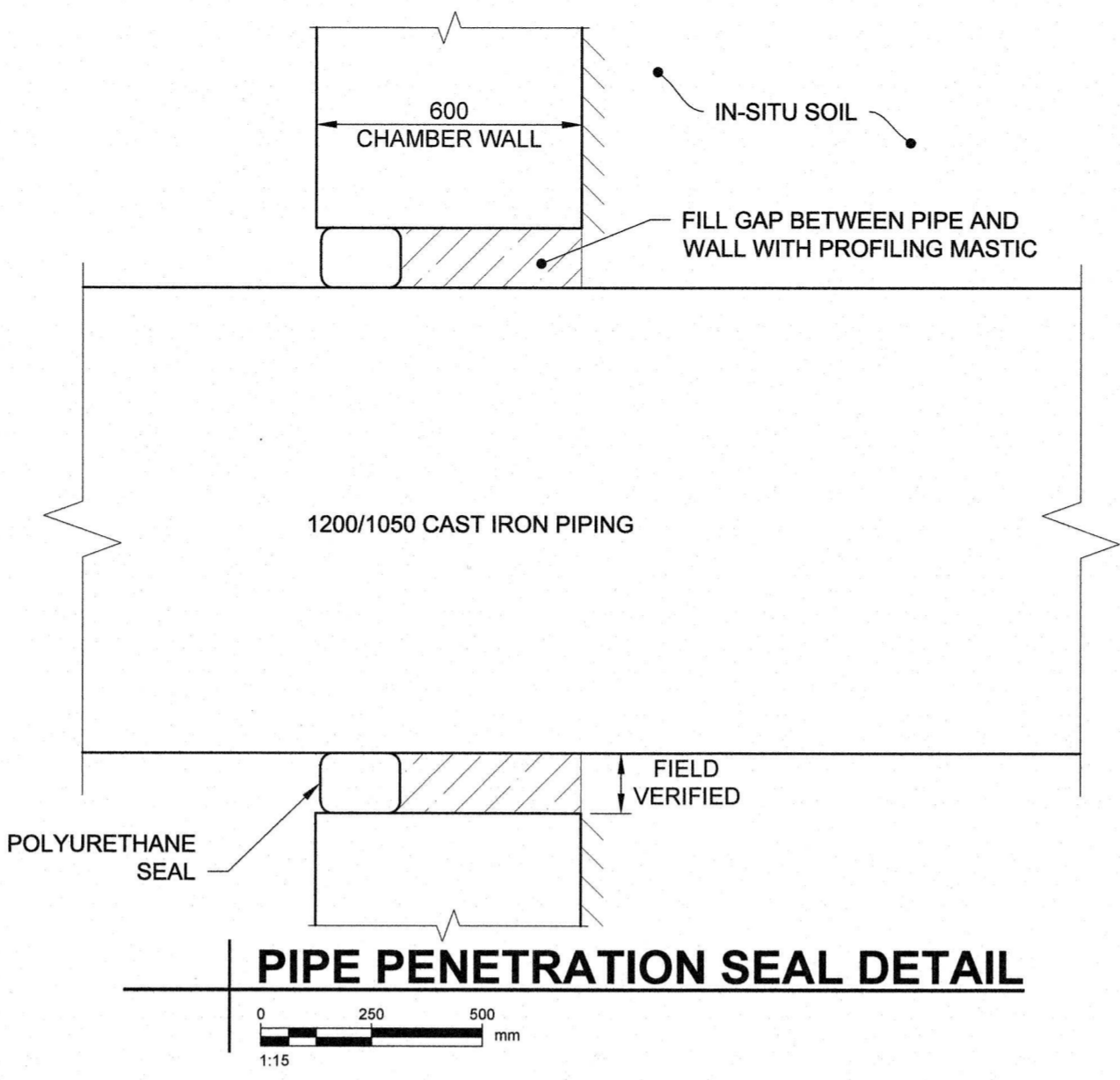
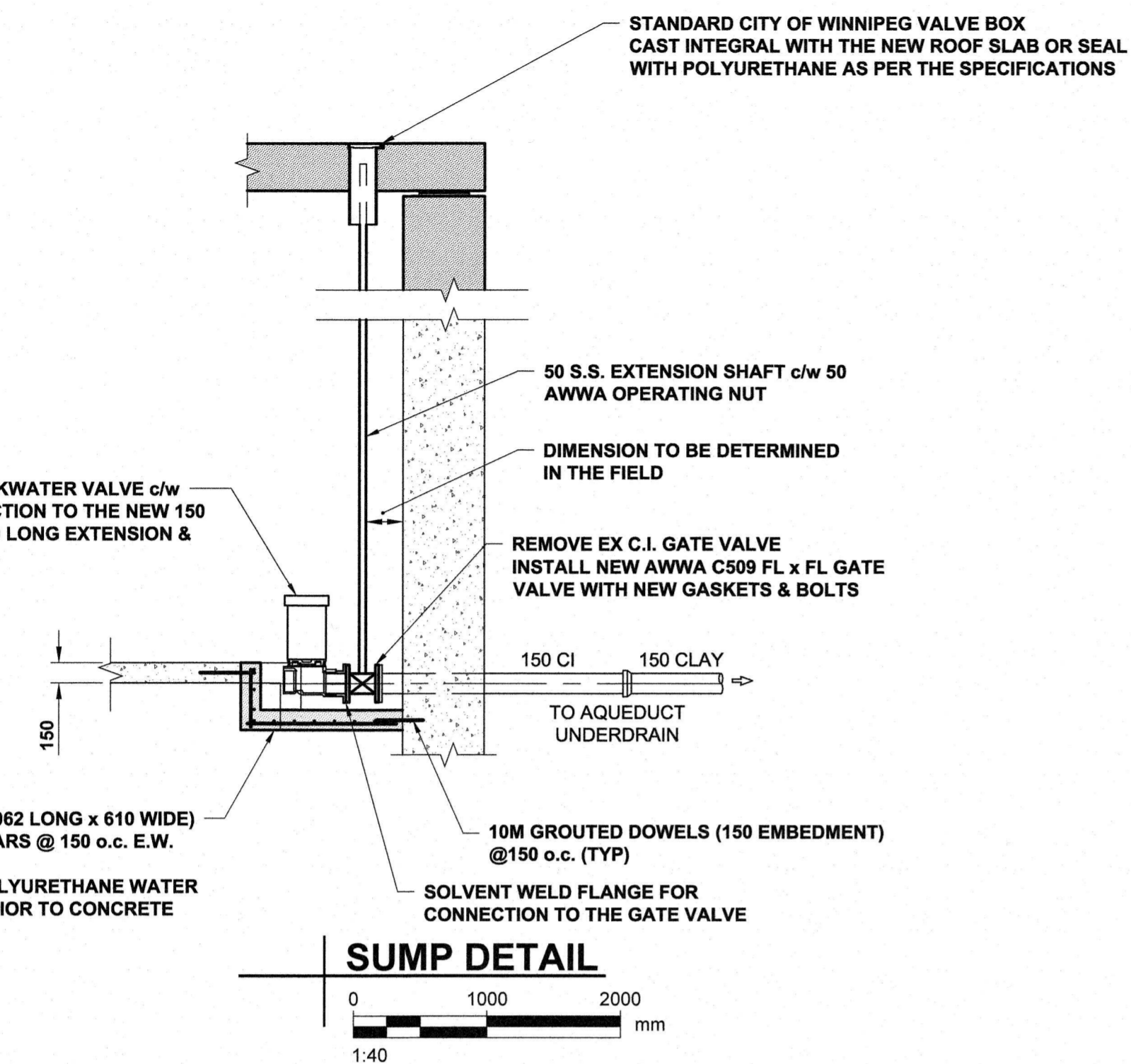


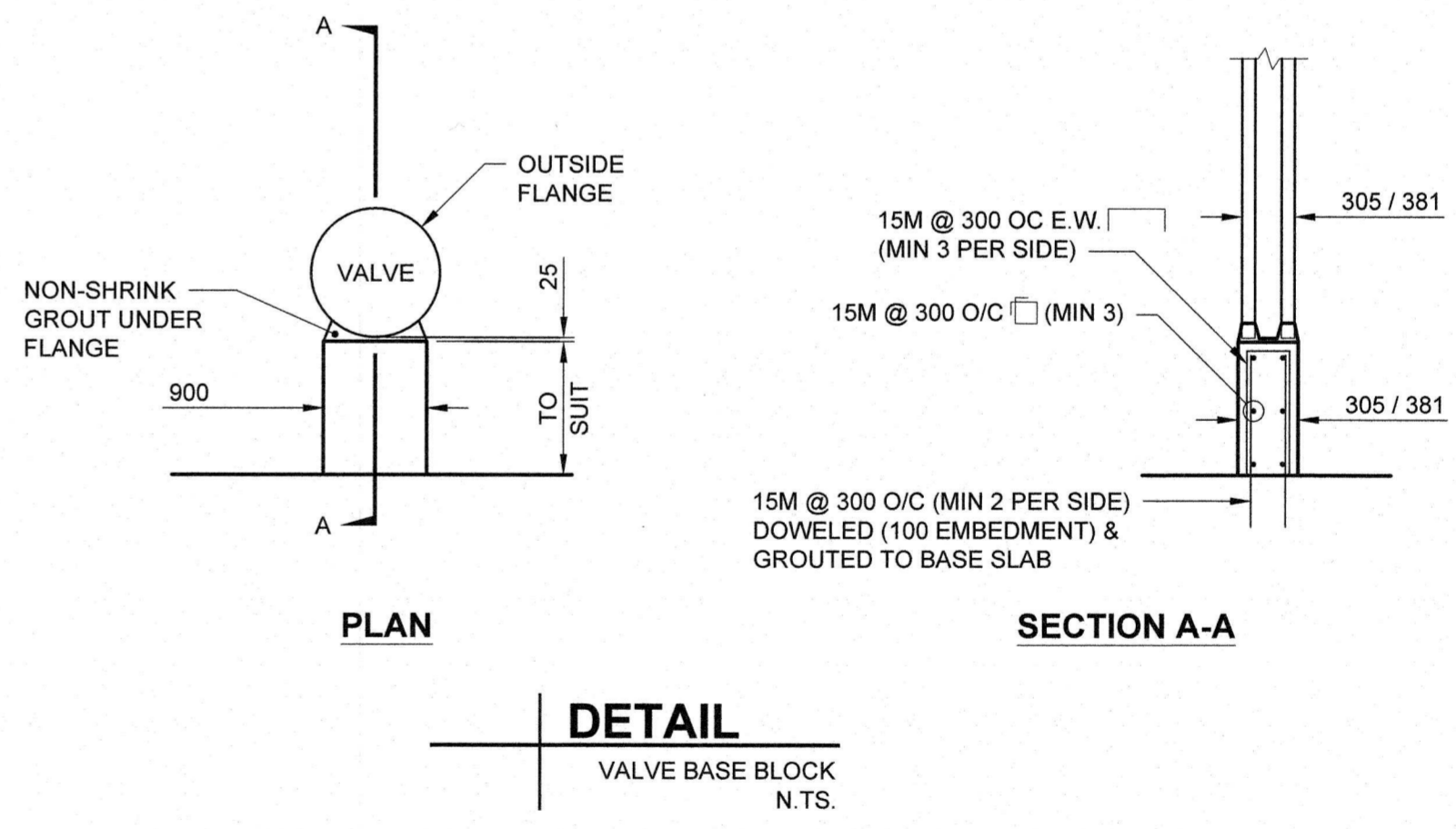
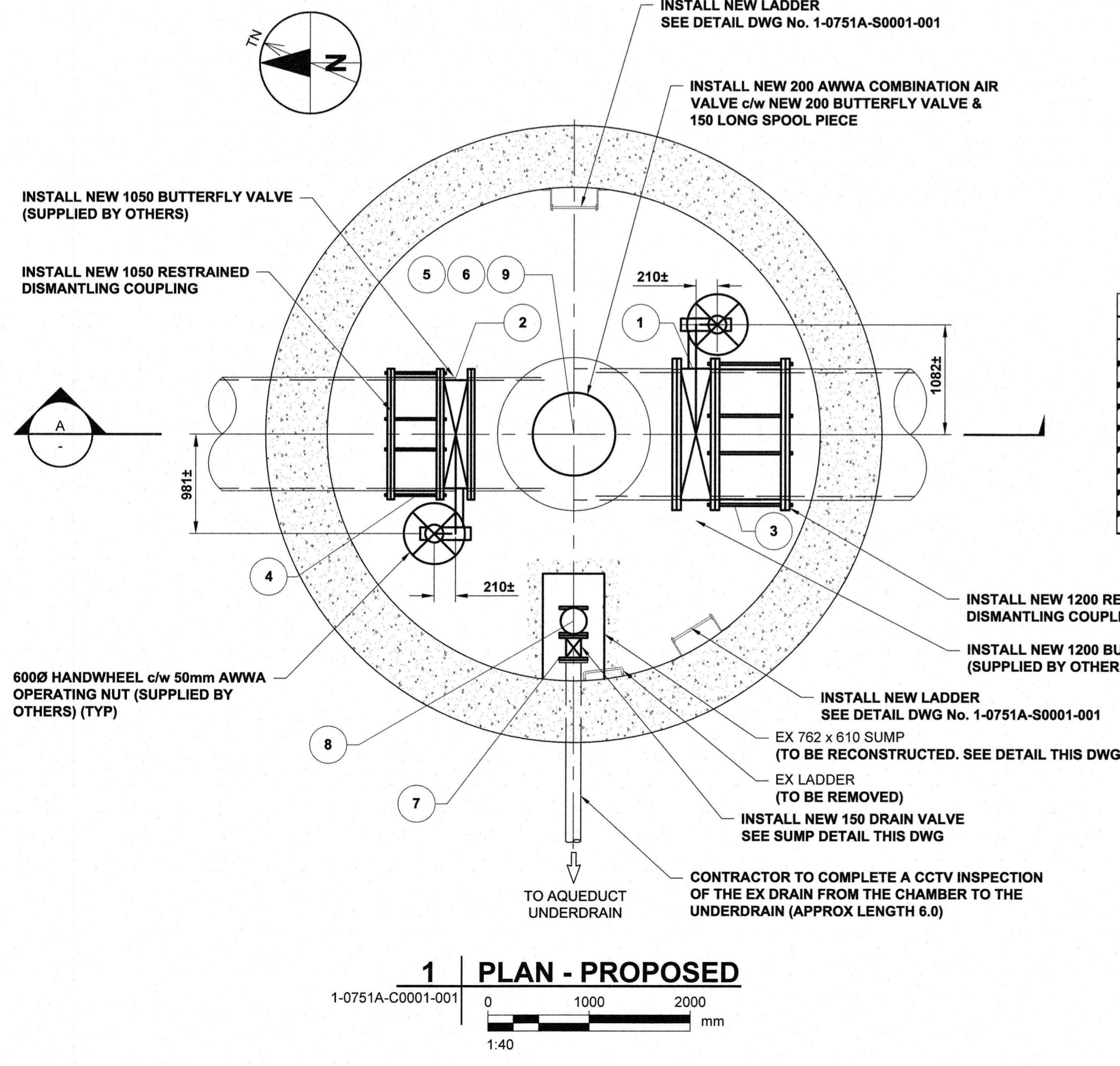
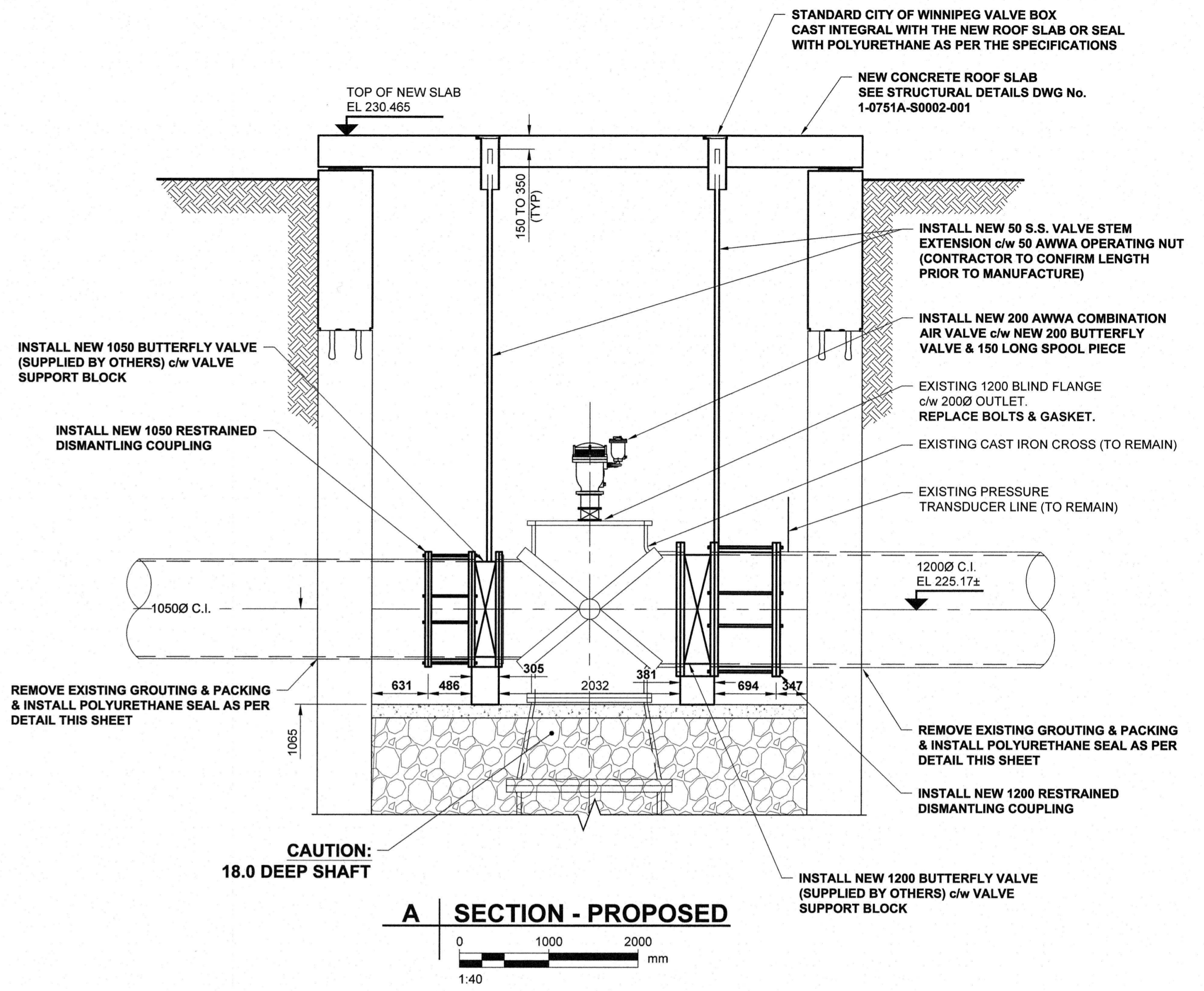
D SIZE 22" x 34" (559mm x 864mm)

PLOT: 10/12/2016 2:24:16 PM

AECOM REVIEW DRAFT CHK
AECOM FILE NAME: 6050849-SHT-30-0000-C-3002.dwg Saved By: cooperkl



| MATERIAL LIST | | |
|---------------|--|----------|
| ITEM | DESCRIPTION | QUANTITY |
| 01 | 1200 BUTTERFLY VALVE C/W WORM GEAR OPERATOR (SUPPLIED BY OTHERS) | 1 |
| 02 | 1050 BUTTERFLY VALVE C/W WORM GEAR OPERATOR (SUPPLIED BY OTHERS) | 1 |
| 03 | 1200 RESTRAINED DISMANTLING JOINT | 1 |
| 04 | 1050 RESTRAINED DISMANTLING JOINT | 1 |
| 05 | 200 AWWA C504 (FL x FL) BUTTERFLY VALVE C/W WORM GEAR OPERATOR | 1 |
| 06 | 200 AWWA C512 COMBINATION AIR VALVE | 1 |
| 07 | 150 AWWA C509 GATE VALVE C/W WORM GEAR OPERATOR | 1 |
| 08 | 150 PVC BACKWATER VALVE c/w FLANGED END | 1 |
| 09 | 200 STEEL SPOOL PIECE FL x FL (150 LONG) | 1 |



- CONSTRUCTION NOTES:**
- SANDBLAST & PAINT ALL EXPOSED STEEL SURFACES.
 - DISCONNECT THE EXISTING ELECTRIC ACTUATOR WIRING & COIL NEATLY WITHIN THE CHAMBER.
 - THE OWNER TO DISCONNECT POWER TO THE VALVE ACTUATOR WITHIN THE STATION PRIOR TO CONSTRUCTION.
 - CONTRACTOR TO SUPPLY NEW BOLTING HARDWARE & GASKETS FOR ALL DISASSEMBLED FLANGE CONNECTIONS.
 - CONTRACTOR TO FIELD CONFIRM THE LOCATION OF THE EXISTING VALVE STEMS & VALVE BOXES PRIOR TO CASTING THE NEW ROOF SLAB.
 - CONTRACTOR TO CONFIRM LAY LENGTHS & BOLTING PATTERNS FOR ALL COMPONENTS.

METRIC
WHOLE NUMBERS INDICATE MILLIMETRES
DECIMALIZED NUMBERS INDICATE METRES

APEGM
Certificate of Authorization
AECOM Canada Ltd.
No. 4671 Date: **Oct 13/16**

LOCATION APPROVED UNDERGROUND STRUCTURES

| SUPR. U/G STRUCTURES COMMITTEE | DATE |
|--------------------------------|------|
| | |

NOTE: LOCATION OF UNDERGROUND STRUCTURES AS SHOWN ARE BASED ON THE BEST INFORMATION AVAILABLE. BUT NO GUARANTEE IS GIVEN THAT ALL EXISTING UTILITIES ARE SHOWN OR THAT THE GIVEN LOCATIONS ARE EXACT. CONFIRMATION OF EXISTENCE AND EXACT LOCATION OF ALL SERVICES MUST BE OBTAINED FROM THE INDIVIDUAL UTILITIES BEFORE PROCEEDING WITH CONSTRUCTION.

| NO. | REVISIONS | YY/MM/DD | BY |
|-----|-------------------------|----------|-----|
| 0 | ISSUED FOR CONSTRUCTION | 16/10/13 | KLC |

AECOM

| DESIGNED BY | ADB | CHECKED BY |
|-------------|----------|---------------------------|
| DRAWN BY | ADL | APPROVED BY |
| HOR. SCALE | AS NOTED | RELEASED FOR CONSTRUCTION |
| VERT. SCALE | N/A | DATE |

PROFESSIONAL'S SEAL
PROVINCE OF MANITOBA
BRAUN
REGISTERED PROFESSIONAL ENGINEER
CONSULTANT DRAWING NO.
6050849-SHT-30-0000-C-3002

THE CITY OF WINNIPEG WATER AND WASTE DEPARTMENT

BRANCH I AQUEDUCT EAST TUNNEL SHAFT UPGRADES

PROPOSED PIPING MODIFICATIONS
PLANS, SECTIONS & DETAILS

SHEET 4 OF 8
CITY DRAWING NUMBER
1-0751A-C0003-001 0

BID OPPORTUNITY NO. 805-2016