

PRELIMINARY
NOT TO BE USED FOR
CONSTRUCTION

CONSTRUCTION NOTES

- 1) CURB REPLACEMENT AS DIRECTED BY THE CONTRACT ADMINISTRATOR.
- 2) ALL STREET RADIUS CURB UNDER 15M RADIUS SHALL BE REPLACED AS MODIFIED OR AS DIRECTED BY THE CONTRACT ADMINISTRATOR.
- 3) INSTALL DETECTABLE WARNING SURFACE TILES AT CURB RAMP AS PER CW 3326.

WARNING

IF POWER EQUIPMENT OR EXPLOSIVES ARE TO BE USED FOR EXCAVATION ON THIS PROJECT THE CONTRACTOR MUST:

- 1) OBTAIN CLEARANCE FROM THE GAS UTILITY PRIOR TO EXCAVATION.
- 2) TAKE PRECAUTION TO AVOID DAMAGE TO GAS UTILITY INSTALLATIONS.

SEE PROVINCIAL REGULATION 210/72 FOR DETAILS

METRIC
WHOLE NUMBERS INDICATE MILLIMETRES
DECIMALIZED NUMBERS INDICATE METRES

BID OPPORTUNITY NO. 82-2016

EXISTING	LEGEND - PLAN	PROPOSED	EXISTING	LEGEND - PLAN	PROPOSED	EXISTING	LEGEND - PROFILE	PROPOSED
⊕	HYDRANT	⊕	---	LDS/WWS	---	---	NORTH GUTTER	---
⊙	VALVE	⊙	---	WATERMAIN	---	---	CENTER LINE	---
⊚	CURB STOP	⊚	---	GAS	---	---	SOUTH GUTTER	---
▬	CONCRETE SIDEWALK	▬	---	TRAFFIC SIGNALS	---			
○	O.L.S.	●	---	CONCRETE	▨			
○	MANHOLE	●	---	CURB RENEWAL	▨			
□	CATCH BASIN	■	231.000	ELEVATIONS	[231.000]			
△	CURB INLET	▲	---	PROPERTY LINE	---			
☆	HYDRO POLE	+	---	SURVEY BAR	+			
⊕	TRAFFIC SIGNAL POLE	⊕	---	GEODETIC BENCH MARK	+			
---		---	---	RAMP CURB	---			

LOCATION APPROVED UNDERGROUND STRUCTURES

NO. REVISIONS DATE BY

DATE 2016/04/07

NOTE:
LOCATION OF UNDERGROUND STRUCTURES AS SHOWN ARE BASED ON THE BEST INFORMATION AVAILABLE. BUT NO GUARANTEE IS GIVEN THAT ALL EXISTING UTILITIES ARE SHOWN OR THAT THE GIVEN LOCATIONS ARE EXACT. CONFIRMATION OF EXISTENCE AND EXACT LOCATION OF ALL SERVICES MUST BE OBTAINED FROM THE INDIVIDUAL UTILITIES BEFORE PROCEEDING WITH CONSTRUCTION.

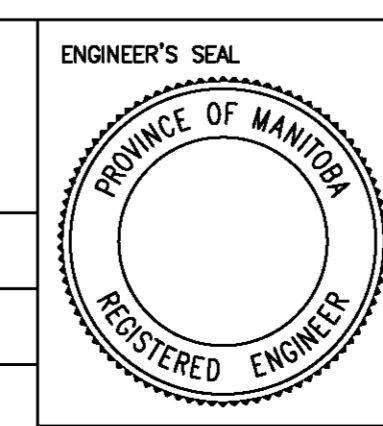
NO.	REVISIONS	DATE	BY

**ENGINEERING DIVISION
TECHNOLOGY SERVICES BRANCH
106 - 1155 PACIFIC AVE**

DESIGNED BY: _____
DRAWN BY: E.H.
HOR. SCALE: 1 : 250
VERTICAL: _____

CHECKED BY: C.H.
APPROVED BY: _____

DATE: 2016/04/07



THE CITY OF WINNIPEG
PUBLIC WORKS DEPARTMENT

SARGENT AVENUE
FROM MILT STEGALL DRIVE TO ALLEY WEST OF STRATHCONA STREET
NEW CONCRETE SIDEWALK CONSTRUCTION
FROM STA. 4+50 TO E. LIMIT

CITY DRAWING NUMBER
SE-16-35
SHEET 4 OF 4

4