

NOTE:
ALL CAST IRON FITTINGS
TO BE POLY WRAPPED

BREAK OUT EXISTING 6" C.I. PIPE AND
REPLACE WITH PERMASTRAN PRESSURE
PIPE CLASS 150 CONNECT WITH
ROBAR O' CLAMP STYLE (SALVAGE
CLAMPS FROM EXISTING PIPE)
(REF DWG. ME-65-A-ME-24)

CONTRACT B.
RESERVOIR

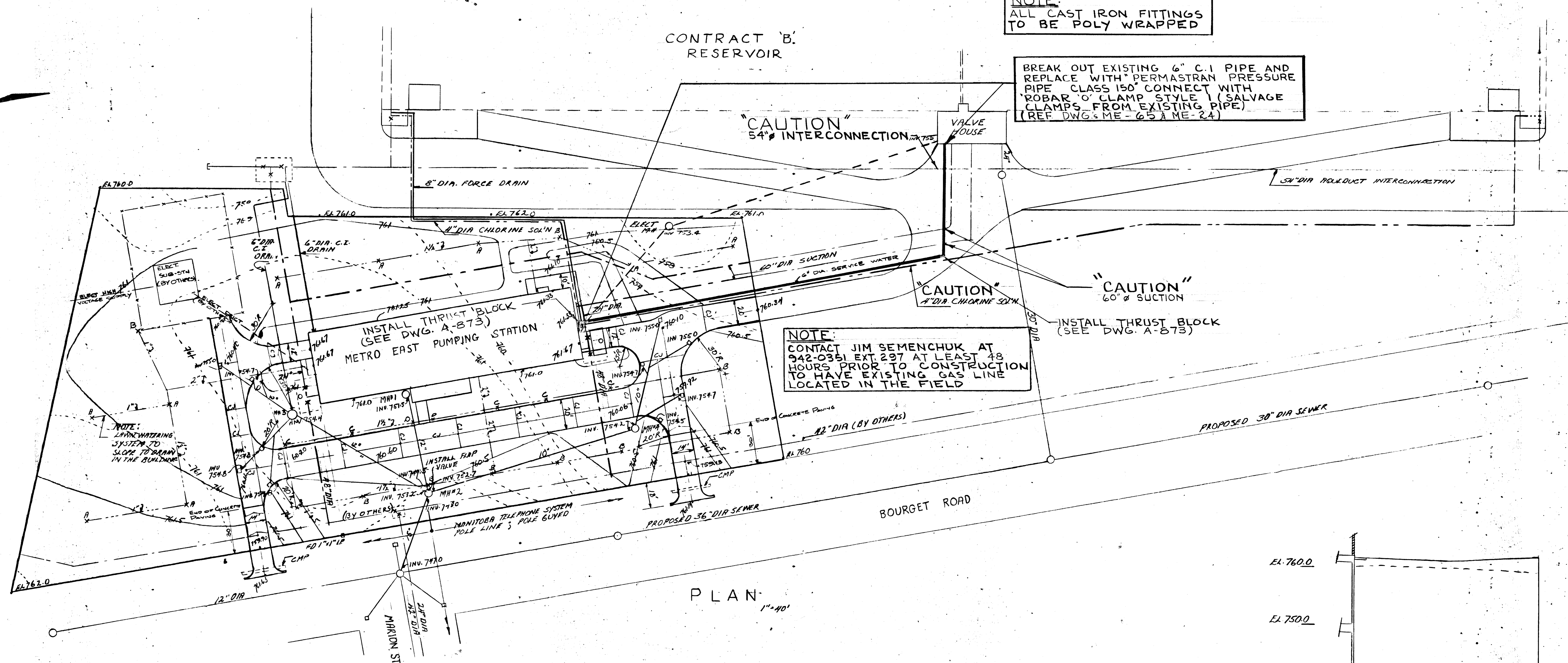
"CAUTION"
54" INTERCONNECTION

"CAUTION"
4" DIA CHLORINE SOLN

"CAUTION"
60" SUCTON

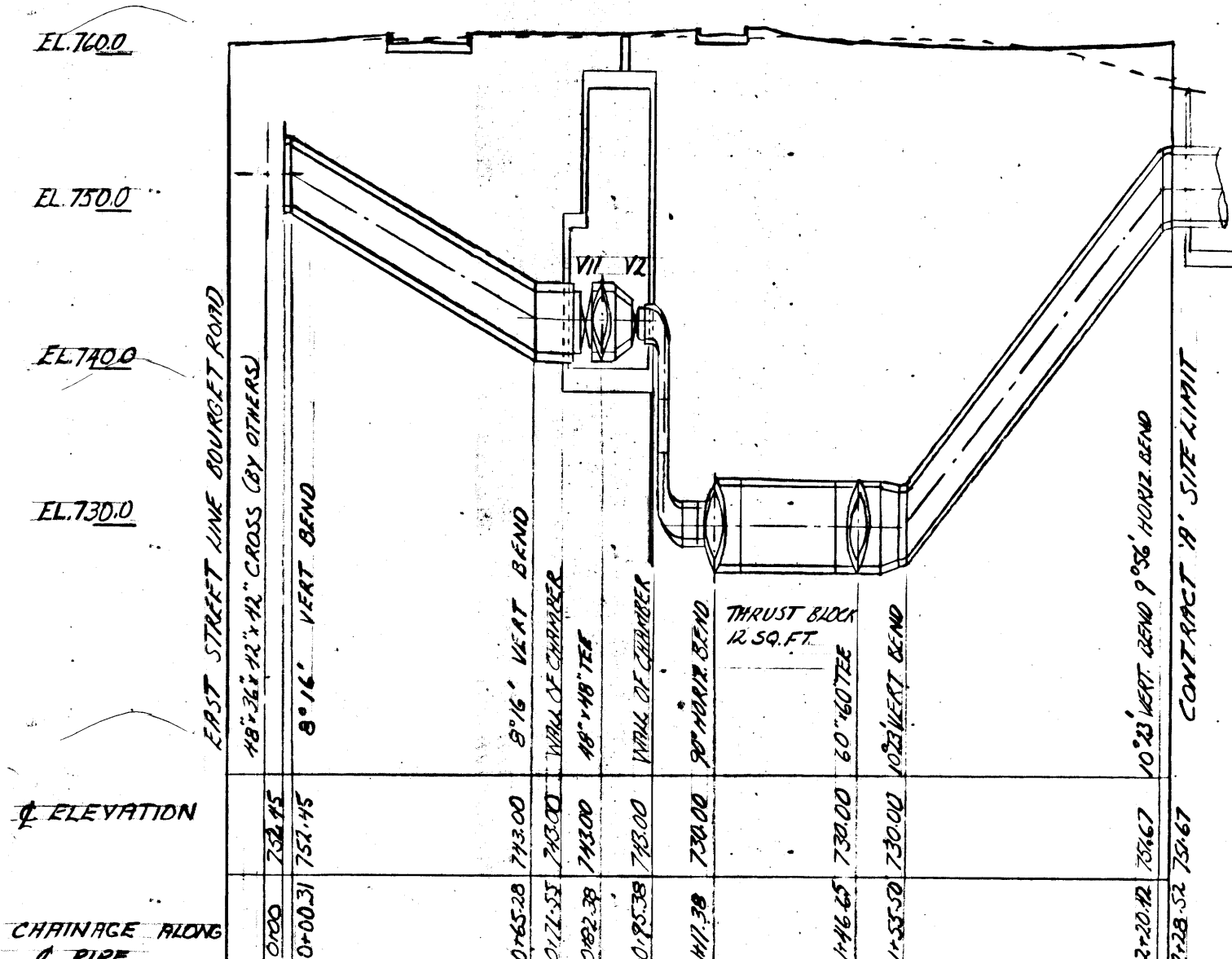
INSTALL THRUST BLOCK
(SEE DWG. A-D75)

NOTE:
CONTACT JIM SEMENCHUK AT
942-0351 EXT 237 AT LEAST 48
HOURS PRIOR TO CONSTRUCTION
TO HAVE EXISTING GAS LINE
LOCATED IN THE FIELD

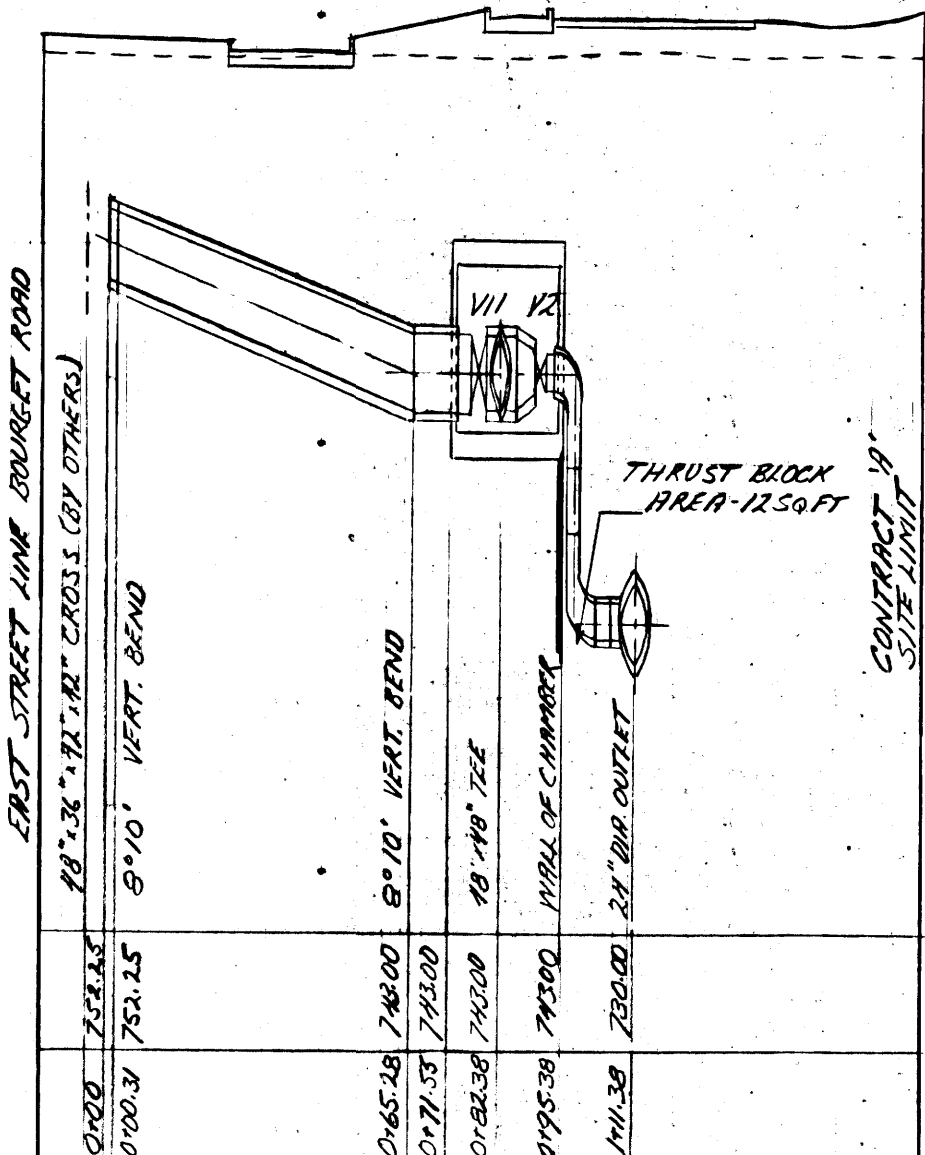


- LEGEND
- ORIGINAL GROUND CONTOURS
 - FINISHED GRADE CONTOURS
 - DRAIN OR SEWER
 - WATER MAIN
 - CHLORINE SOLUTION
 - ELECTRICAL DUCTS
 - LANA WATERING SUPPLY PIPES AND SPRINKLER HEAD
 - BORE HOLE
 - CONSTRUCTION JOINT

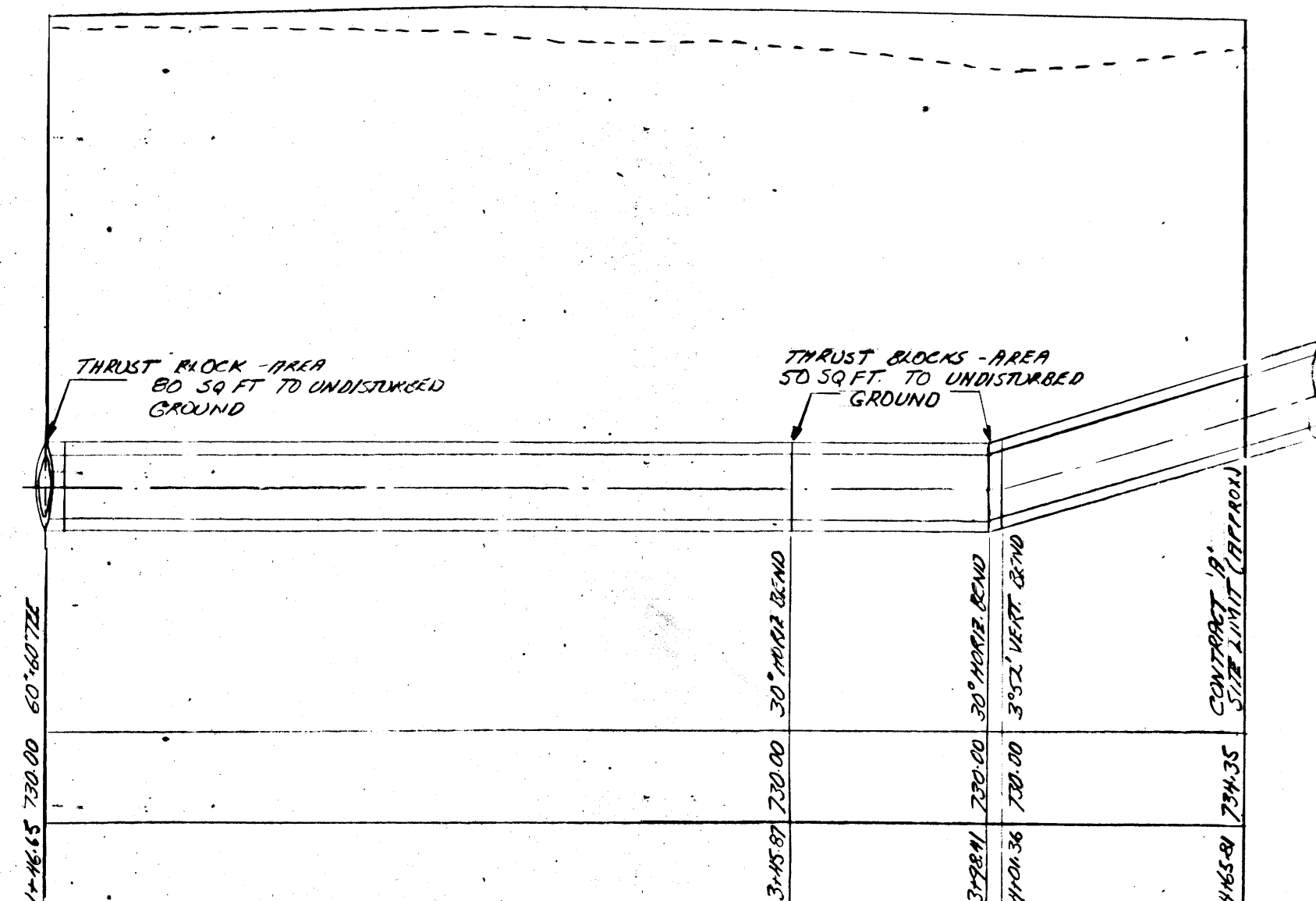
PLAN
1"=40'



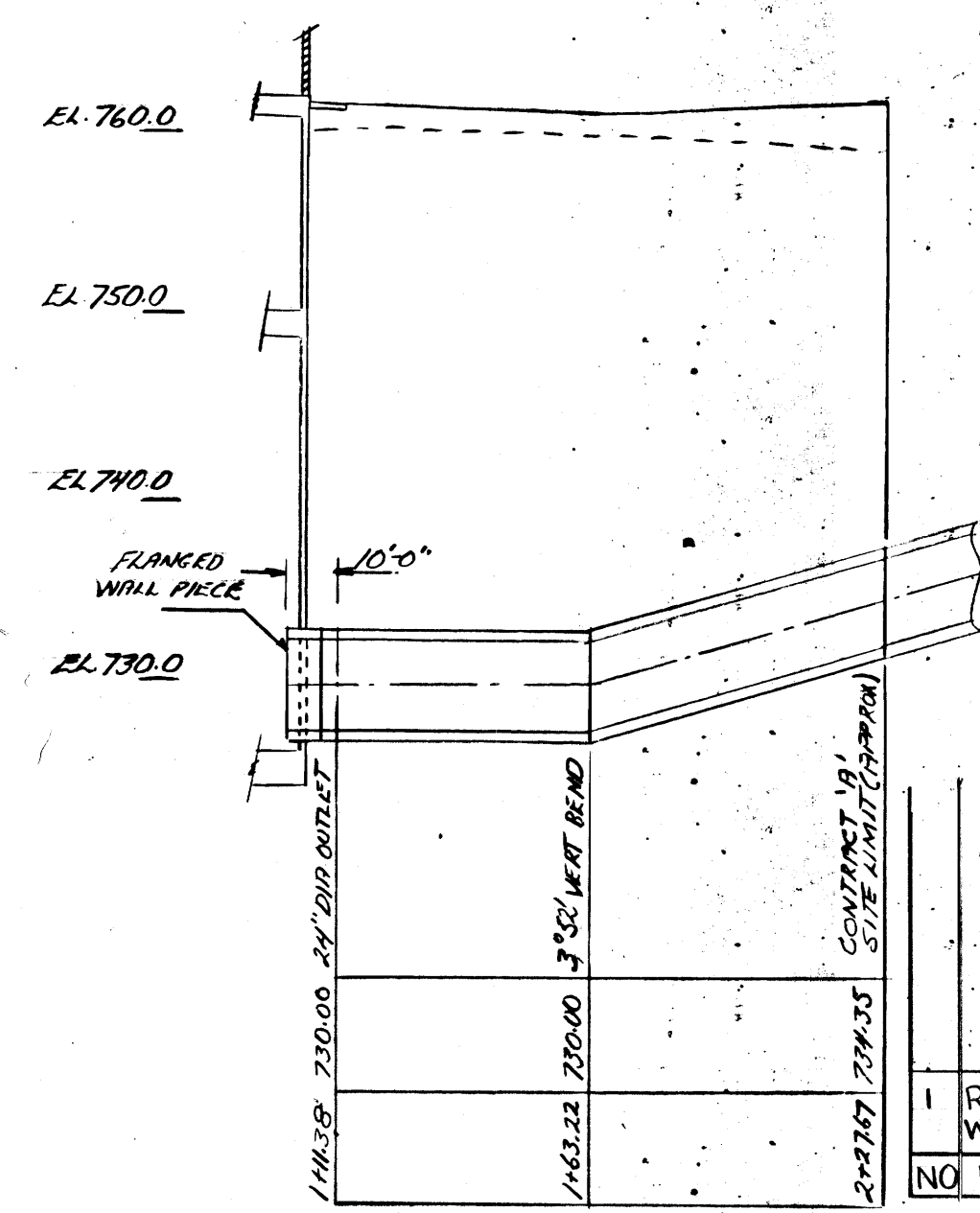
NORTH DISCHARGE - EMERGENCY SUCTON



SOUTH DISCHARGE



EAST SUCTON



WEST SUCTON

NOTE:
SEE MECHANICAL DUES FOR PIPING
DETAILS IN VALVE CHAMBERS
CHAMBER ALONG & TO P.I. OF BENDS

CONCRETE PRESSURE PIPE PROFILES

1"=40' HORIZONTAL
1"=10' VERTICAL

REVISED FOR 6" SERVICE WATER REPLACEMENT	RF: 1 SEPT/77
NO REVISION	BY DATE

REVISED AS BUILT, JUNE-1965

THE METROPOLITAN CORPORATION OF GREATER WINNIPEG
WATERWORKS AND WASTE DISPOSAL DIVISION

METRO EAST PUMPING STATION AND RESERVOIR

**CONTRACT A - PUMPING STATION
YARD PIPING
PLANS AND PROFILES**

APPROVED
JAMES F. MacLAREN ASSOCIATES
ENGINEERS TORONTO

APPROVED
DESIGN ENGINEER
ENGINEER OF WATERWORKS
DIRECTOR & CHIEF ENGINEER

DATE: JUNE 22, 1962
SCALE: AS SHOWN
DWG. No. 39 OF 41
ME-46