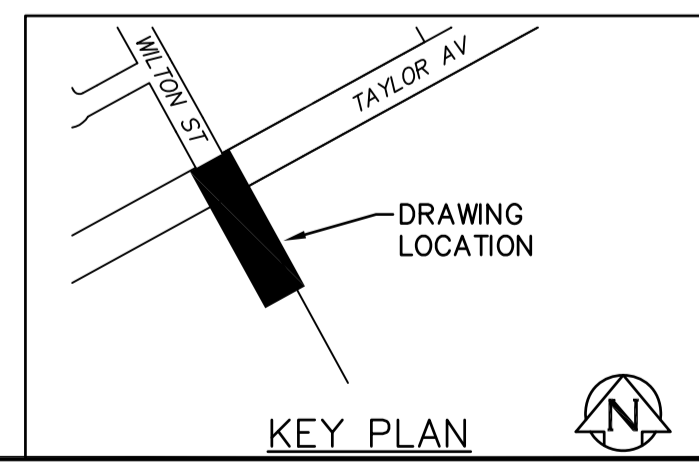
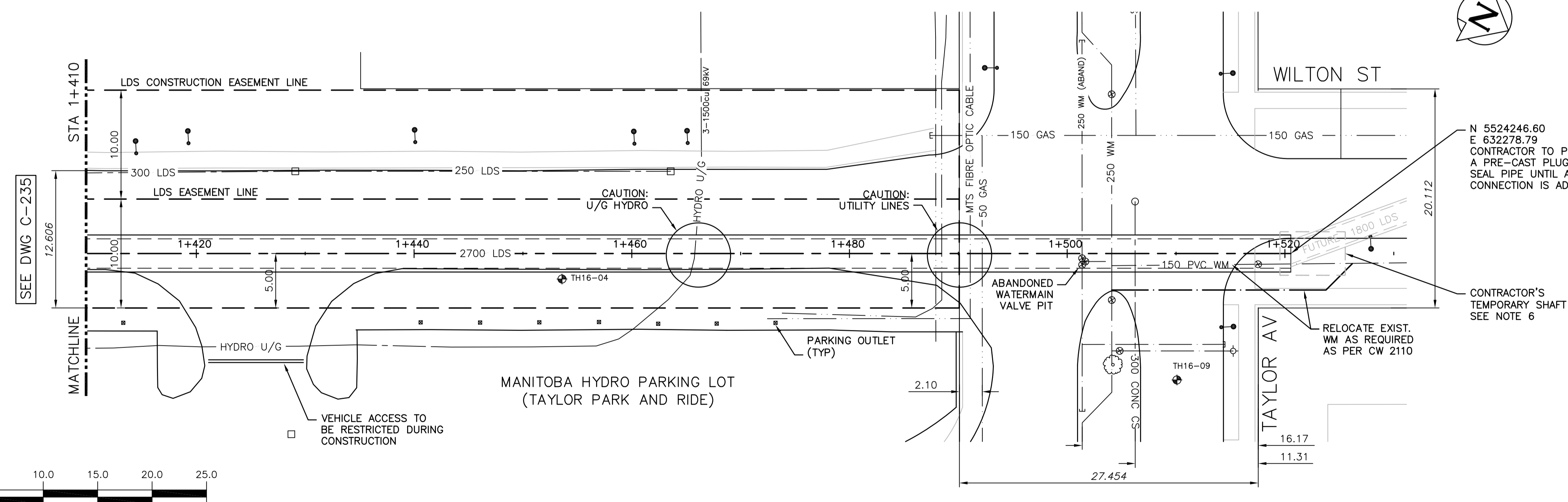


1+420 1+440 1+460 1+480 1+500 1+520

WARNING
 IF POWER EQUIPMENT OR EXPLOSIVES ARE TO BE USED FOR EXCAVATION ON THIS PROJECT THE CONTRACTOR MUST:
 1) NOTIFY THE GAS COMPANY OF THE PROPOSED LOCATION OF EXCAVATION.
 2) TAKE PRECAUTION TO AVOID DAMAGE TO GAS COMPANY INSTALLATIONS.
 SEE PROVINCIAL REGULATION 210/72 FOR DETAILS.

PROPERTY LIMITS DELINEATION
 DELINEATION OF PROPERTY LIMITS AS SHOWN ON THIS DWG DOES NOT REPRESENT A "LEGAL SURVEY". CH2M HILL MAKES NO REPRESENTATION OR WARRANTY AS TO THE ACCURACY OF PROPERTY LIMITS DELINEATED ON THIS DRAWING, NOR ON THE DIMENSIONAL ACCURACY OF DRAWING FEATURES RELATIVE TO THOSE PROPERTY LIMITS.

- CONSTRUCTION NOTES:**
- SEWER AND WATER SERVICES SHOWN ON DRAWING ARE APPROXIMATE ONLY.
 - LOCATION OF ALL SEWER AND WATER LINES TO BE CONFIRMED IN FIELD.
 - INSTALL NEW SEWER BY TRENCHLESS METHODS, UNLESS OTHERWISE NOTED.
 - INSTALL AND MAINTAIN TEMPORARY CONSTRUCTION FENCING AROUND SITE IN ALL PUBLIC LOCATIONS.
 - REFER TO TRAFFIC MANAGEMENT PLAN FOR TAYLOR AVENUE.
 - CONTRACTOR'S TEMPORARY SHAFT TO HAVE A MIN. OF 1.0m OF PROPOSED 2700 LDS ENTER FROM SOUTH. TEMPORARY SHORING ON SOUTH SIDE TO REMAIN UP TO 1.0m BELOW GROUND ELEVATION AND SHAFT BACKFILLED WITH CONTROLLED LOW STRENGTH MATERIAL (MAX. 1MPa). ALLOWANCE FOR FUTURE CONNECTION WITH 1800 LDS PIPE METHODOLOGY TO BE APPROVED BY CONTRACT ADMINISTRATOR PRIOR TO CONSTRUCTION. LIMITS OF TEMPORARY SHAFT ARE SHOWN FOR ILLUSTRATIVE PURPOSES ONLY.



File name C:\pwworkdir\c12mhill_wbg\jortez\04204776\

EXISTING	LEGEND-PLAN	PROPOSED	EXISTING	LEGEND-PLAN	PROPOSED	EXISTING	LEGEND-PROFILE	PROPOSED
150 WM	WATER MAIN	150 WM	HYDRO	HYDRO	150 WM	WATER MAIN	150 WM	150 WM
300 LDS	LAND DRAINAGE SEWER	300 LDS	CONCRETE	CONCRETE	300 LDS	LAND DRAINAGE SEWER	300 LDS	300 LDS
250 WWS	WASTE WATER SEWER	250 WWS	ASPHALT	ASPHALT	250 WWS	WASTE WATER SEWER	250 WWS	250 WWS
MANHOLE	MANHOLE	MANHOLE	SIDWALK	SIDWALK	MANHOLE	MANHOLE	MANHOLE	MANHOLE
CATCH BASIN	CATCH BASIN	CATCH BASIN	PLANNING	PLANNING	CATCH BASIN	CATCH BASIN	CATCH BASIN	CATCH BASIN
CURB INLET	CURB INLET	CURB INLET	PROPERTY LINE	PROPERTY LINE	CURB INLET	CURB INLET	CURB INLET	CURB INLET
BEND	BEND	BEND	SURVEY BAR	SURVEY BAR	BEND	BEND	BEND	BEND
REDUCER	REDUCER	REDUCER	GAS	GAS	REDUCER	REDUCER	REDUCER	REDUCER
TEE	TEE	TEE	CURB STOP	CURB STOP	TEE	TEE	TEE	TEE

LOCATION APPROVED UNDERGROUND STRUCTURES

SUPV. U/G STRUCTURES COMMITTEE DATE

NOTE:
 LOCATION OF UNDERGROUND STRUCTURES AS SHOWN ARE BASED ON THE BEST INFORMATION AVAILABLE BUT NO GUARANTEE IS GIVEN THAT ALL EXISTING UTILITIES ARE SHOWN OR THAT THE GIVEN LOCATIONS ARE EXACT. CONFIRMATION OF EXISTENCE AND EXACT LOCATION OF ALL SERVICES MUST BE OBTAINED FROM THE INDIVIDUAL UTILITIES BEFORE PROCEEDING WITH CONSTRUCTION.

NO.	REVISIONS	DATE	BY
D	ISSUED FOR RFQ 908-2016	11/2016	JBC
C	ISSUED FOR 95% REVIEW	09/2016	JBC
B	ISSUED FOR REVIEW	08/2016	JBC
A	ISSUED FOR REVIEW	05/2016	JBC

KGS GROUP CONSULTING ENGINEERS

DESIGNED BY: SDG
 CHECKED BY: MD
 DRAWN BY: JBC
 APPROVED BY: [Signature]
 HOR. SCALE: 1:250
 VERTICAL: 1:50
 RELEASED FOR CONSTRUCTION: [Date]

ENGINEER'S SEAL
 PRELIMINARY
 NOT FOR CONSTRUCTION
 CONSULTANT DRAWING NO. C-236

THE CITY OF WINNIPEG WATER AND WASTE DEPARTMENT

PROJECT TITLE: COCKBURN AND CALROSSIE COMBINED SEWER RELIEF WORKS - CONTRACT 4
 WILTON STREET FROM STA 1+410 TO MH 32

SHEET OF 10 OF 12
 COMPUTER FILE NAME: C-236.dwg
 CITY DRAWING NUMBER: LD-7896