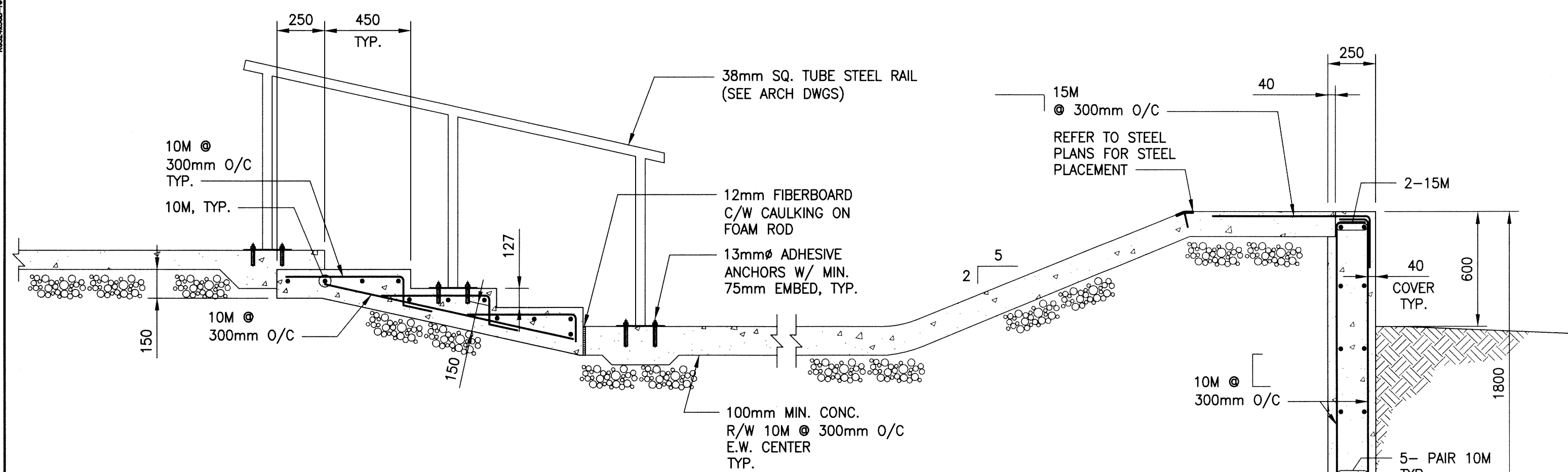
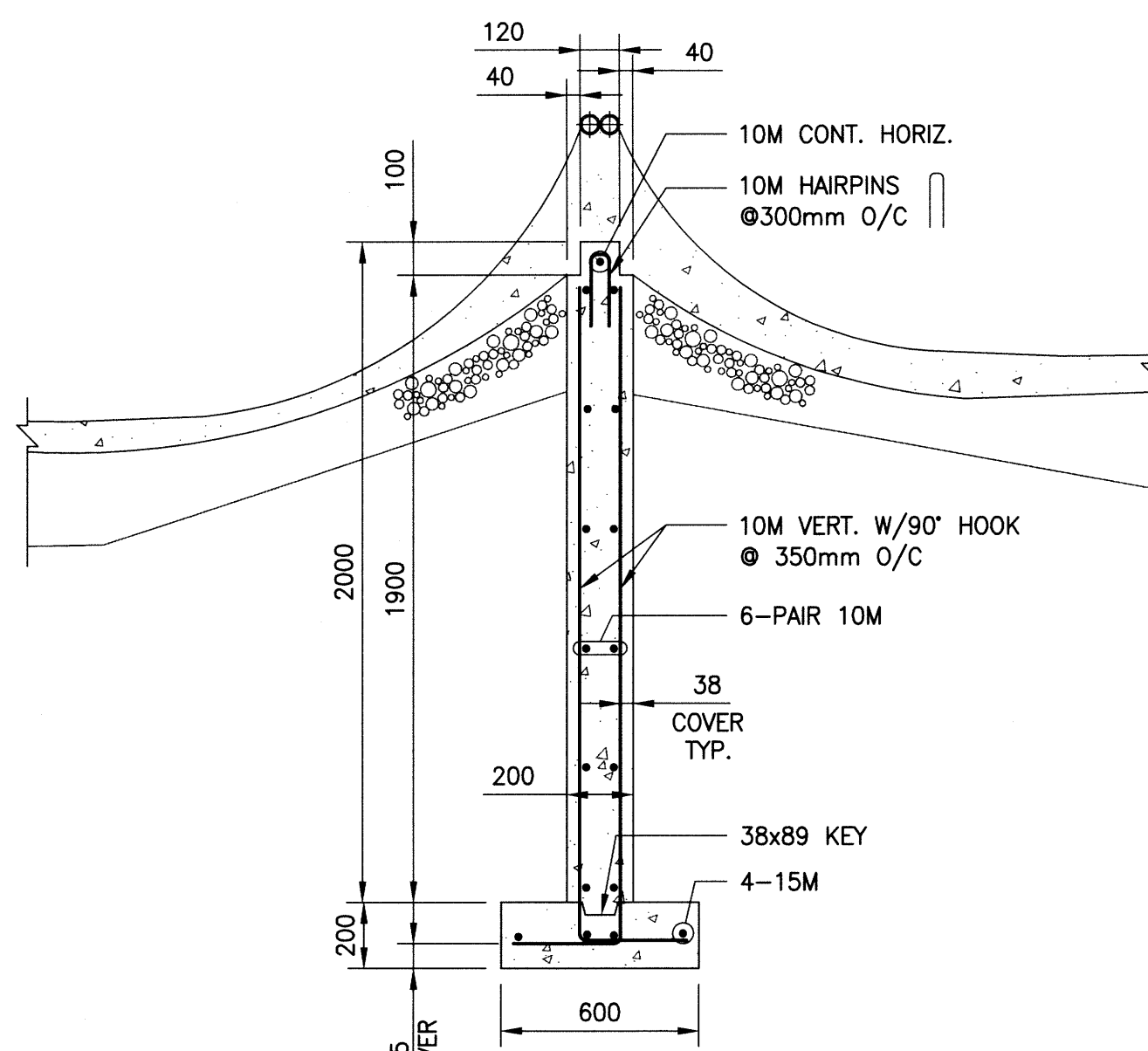


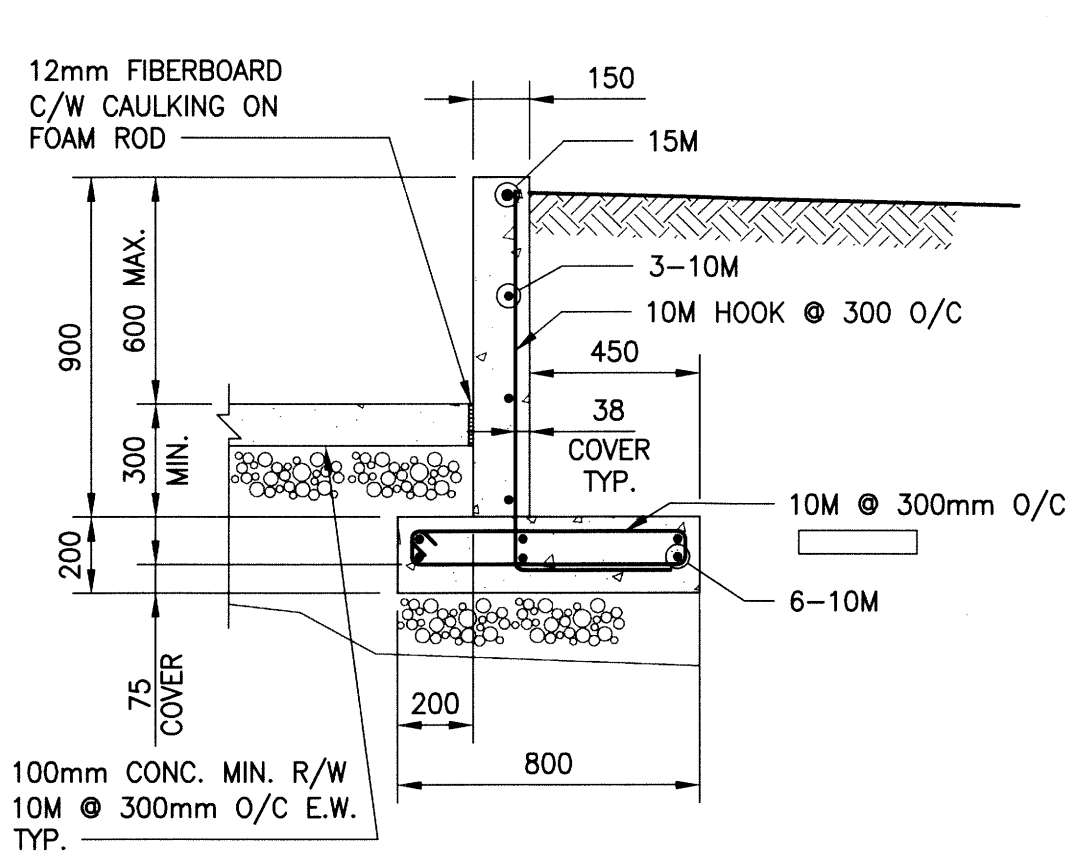
File Name: P:\Projects\2015\15-0109-003\Drawings\15-0109-003\_S02.dwg - Tab: S01 Plotted By: DDeroche 16/02/10 [Wed 3:32pm]  
 24 x 36 / PLOT SCALE: 1:1



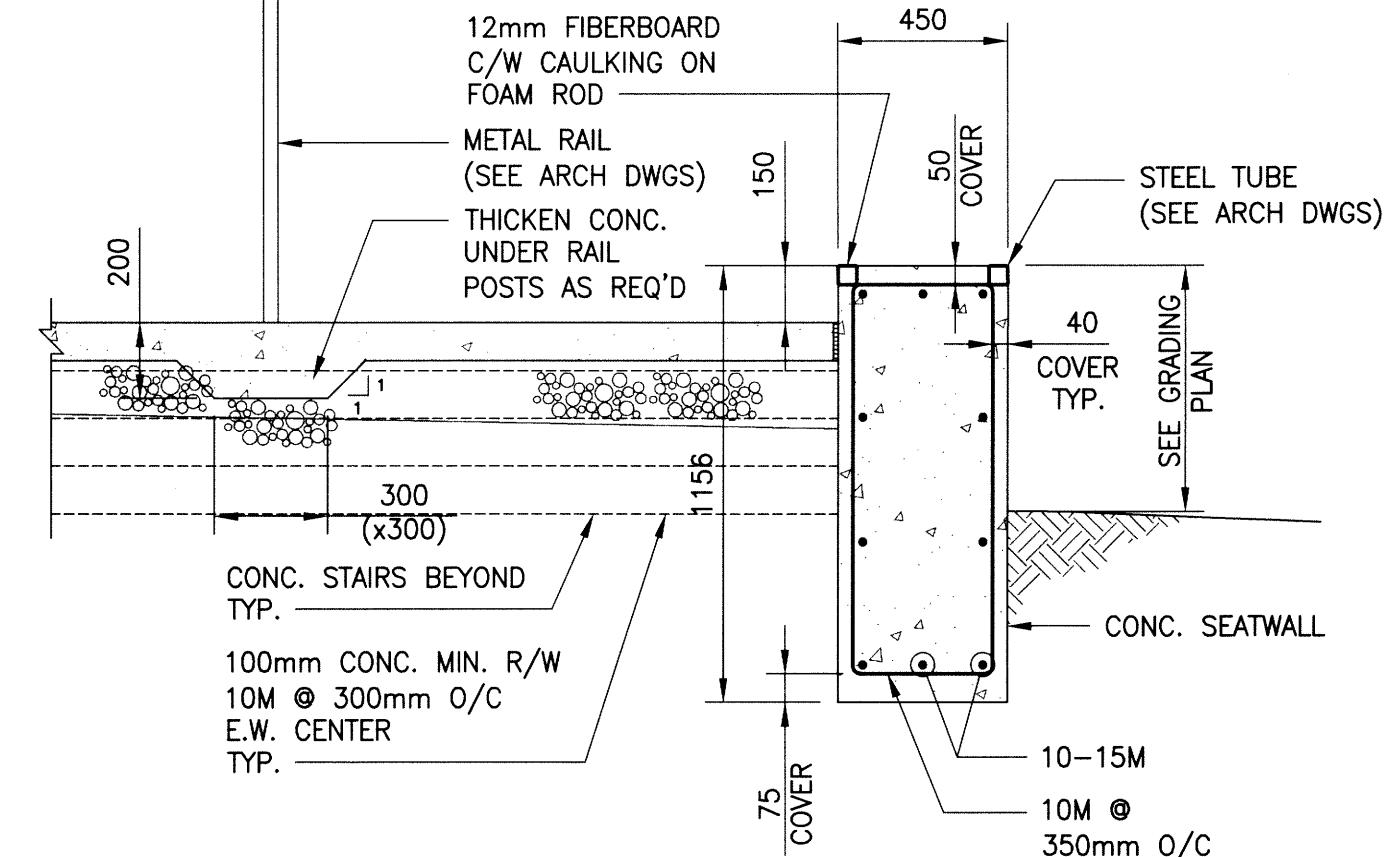
**A**  
S01  
CONCRETE STAIR  
W/ METAL RAIL SECTION  
SCALE: 1:20



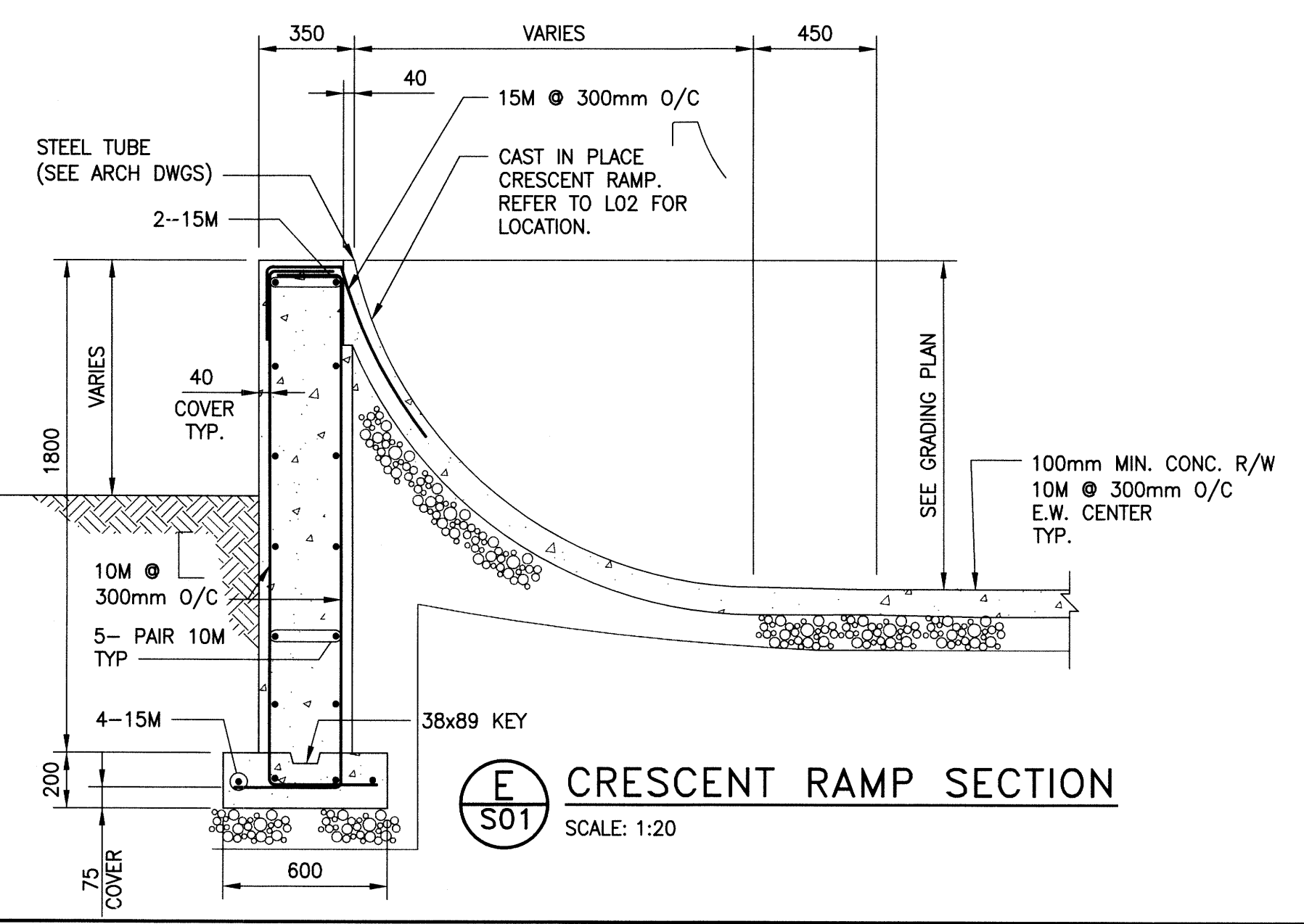
**B**  
S01  
SECTION  
SCALE: 1:20



**C**  
S01  
SECTION  
SCALE: 1:20



**D**  
S01  
CONCRETE SEATWALL SECTION  
SCALE: 1:20



**E**  
S01  
CRESCENT RAMP SECTION  
SCALE: 1:20

**CONCRETE:**

- CONCRETE MATERIALS AND WORKMANSHIP SHALL BE IN ACCORDANCE WITH CSA A23.1-09 (R2014). SEE BELOW FOR MIX REQUIREMENTS.
- ADMIXTURES SHALL NOT BE USED UNLESS SPECIFIED HEREIN OR APPROVED BY THE CONTRACT ADMINISTRATOR. CALCIUM CHLORIDE SHALL NOT BE USED.
- MIX WATER SHALL BE POTABLE.
- DESIGN, FABRICATE AND ERECT FORMWORK/SHORING IN ACCORDANCE WITH CAN/CSA-S269.3-M92 (R2013). ALLOW SUFFICIENT CONCRETE CURING TIME PRIOR TO REMOVAL.
- CONCRETE FINISHING SHALL MEET THE REQUIREMENTS OF CSA A23.1-09 (R2014).
- FORM RELEASE AGENT SHALL BE BIODEGRADABLE, NON-STAINING AND NON-VOLATILE.
- PROVIDE ADEQUATE COLD/HOT WEATHER PROTECTION AS REQUIRED DURING CURING PERIOD.
- PLACE AND SECURE ALL EMBEDDED ANCHORS, WELD PLATES, SLEEVES, BUCKS, DOWELS, INSERTS, WATERSTOPS, ETC., PRIOR TO PLACING CONCRETE. CO-ORDINATE WITH ALL TRADES FOR EMBEDDING OF ALL OTHER, CONDUIT, SERVICES, BLOCKING, ETC.
- ALL EXPOSED CORNERS TO HAVE 25mm CHAMFER FILLET UNLESS NOTED.
- CAST-IN-PLACE ANCHOR BOLTS SHALL MEET REQUIREMENTS OF ASTM A307-14.
- EXPANSION ANCHORS SHALL BE HILTI KWIK-BOLTS OR APPROVED EQUAL IN ACCORDANCE WITH B7, UNLESS NOTED. INSTALL AS PER MANUFACTURER'S INSTRUCTIONS.
- ADHESIVE ANCHORS SHALL BE HILTI HY200 HAS RODS OR APPROVED EQUAL IN ACCORDANCE WITH B7, UNLESS NOTED. INSTALL AS PER MANUFACTURER'S INSTRUCTIONS.
- GROUT REINFORCING DOWELS WITH EPOXY GROUT HILTI HIT-HY200 MAX, OR APPROVED EQUAL IN ACCORDANCE WITH B7. GROUT BASE PLATES WITH NON-SHRINK GROUT SIKKA M-BED STANDARD, OR APPROVED EQUAL IN ACCORDANCE WITH B7. PLACE AND CURE ALL GROUT WITHIN TEMPERATURE RANGE RECOMMENDED BY MANUFACTURER.
- BONDING AGENTS SHALL BE USED TO ADHERE NEW CONCRETE TO EXISTING CONCRETE OR STEEL. ACCEPTABLE PRODUCT: SIKADUR 32 HI-MOD (EPOXY), SIKKA LATEX R (ACRYLIC, MIX INTO GROUT) OR APPROVED EQUAL IN ACCORDANCE WITH B7.
- THE CONCRETE SUPPLIER SHALL BE CERTIFIED TO MEET THE REQUIREMENTS OF CSA A23.1-09 (R2014).
- THE CONCRETE SUPPLIER SHALL SUBMIT CONCRETE MIX DATA SUBMISSION FORMS FOR EACH TYPE OF CONCRETE SPECIFIED FOR REVIEW PRIOR TO BATCHING ANY CONCRETE.

**CONCRETE MIX DESIGNS:**

CONCRETE MIX DESIGN SHALL BE PROPORTIONED TO MEET THE FOLLOWING PERFORMANCE REQUIREMENTS:

EXTERIOR SLABS AND BEAMS:		
EXPOSURE CLASS	MIN. 28 DAY COMP. STRENGTH	C-2 32 MPa
	CEMENT TYPE	GU
MAX. W/C RATIO	MAX. AGGREGATE SIZE	0.45 20mm
	ENTRAINED AIR CONTENT	5%-8%

**REINFORCING STEEL:**

- REINFORCING STEEL TO BE NEW DEFORMED BILLET STEEL BARS CONFORMING TO CSA G30.18-09 (R2014). GRADE TO BE 400 MPa.
- REINFORCING STEEL SHALL BE CLEAN, FREE OF RUST, DIRT, LOOSE SCALE, OIL, GREASE OR ANY OTHER MATERIAL WHICH WOULD REDUCE BOND WITH THE CONCRETE.
- SUBMIT SHOP DRAWINGS WHICH CLEARLY INDICATE BAR SIZES, SPACINGS, LOCATIONS & QUANTITIES OF REINFORCING STEEL, BENDING & CUTTING SCHEDULES, SUPPORTING & SPACING DEVICES, ETC. FOR REVIEW PRIOR TO FABRICATION. DETAIL, FABRICATE AND PLACE REINFORCING IN ACCORDANCE WITH CSA A23.1-09 (R2014), CSA A23.3-14 AND ACI SP-66 (2004) UNLESS NOTED. LAP STEEL 36 BAR DIAMETERS (MINIMUM) UNLESS NOTED.
- BEND ALL HORIZONTAL REINFORCING 305mm AROUND CORNERS OR PROVIDE ADDITIONAL 610mm X 610mm ANGLE BARS.
- TIE, SUPPORT AND SPACE ALL REINFORCING STEEL WITH PROPER APPROVED DEVICES DESIGNED FOR USE IN REINFORCED CONCRETE, TO PREVENT DISPLACEMENT OF REINFORCING AND ENSURE SPECIFIED CONCRETE COVER.
- PROVIDE MINIMUM CONCRETE COVER FOR REINFORCING STEEL AS FOLLOWS:  

FOUNDATION WALLS (EXTERIOR FACE)	38mm
FOUNDATION WALLS (INTERIOR FACE)	38mm
FOUNDATION WALLS (BOTTOM)	75mm
SLAB-ON-GRADE (TOP)	50mm
SLAB-ON-GRADE (BOTTOM)	50mm
FOOTING (BOTTOM)	75mm
FOOTING (SIDE)	35mm

**EXCAVATION & BACKFILL:**

- REMOVE ALL FILL MATERIALS, DELETERIOUS SOILS AND ORGANICS IN AREAS REQUIRING GRANULAR BASE MATERIALS. COMPACT SUBGRADE TO 98% STANDARD PROCTOR DENSITY. SUB-EXCAVATE AND REPAIR ALL AREA EXHIBITING UNSUITABLE DEFLECTIONS.
- GRANULAR BASE TO BE PLACED ON GRADE SHALL BE COMPACTED TO 98% STANDARD PROCTOR DENSITY IN MAXIMUM 150mm LIFTS.
- DO NOT COMPACT FROZEN BACKFILL OR PLACE ON FROZEN SUBGRADE.
- SUB-GRADE, SUB-BASE AND BASE COURSE MATERIALS AND CONSTRUCTION METHODS SHALL BE AS PER CITY OF WINNIPEG SPECIFICATION CW3110, SPECIFICATION UNLESS NOTED.

1	16/02/08	ISSUED FOR RE-TENDER	
NO.	YY/MM/DD	DESCRIPTION	DESIGN CHECK BY
0	15/07/10	ISSUED FOR CONSTRUCTION	RJL
NO.	YY/MM/DD	DESCRIPTION	BY

CLIENT:

**SCATLIFF+MILLER+MURRAY Inc.**  
 TEL: 204.674.0444 FAX: 204.674.0443 1-18 MARKET AVENUE WINNIPEG, MB, CANADA

PROJECT:  
**CHORNICK SKATE PARK  
 CHORNICK PARK  
 WINNIPEG, MB**

DWG. DESCRIPTION:  
**SECTIONS & NOTES**

APEGM  
 Certificate of Authorization  
 KGS Group  
 No. 245

PROFESSOR OF ENGINEERING  
 R.J. LONG

DESIGN BY:	RJL	DATE (YY/MM/DD):	15/06/09
DESIGN CHECK:	PPG	DATE:	15/07/10
DRAWN BY:	JAR	DATE:	15/06/09
DWG. CHECK:	RJL	DATE:	15/07/10
DWG. NO.:	15-0109-003	S02	1