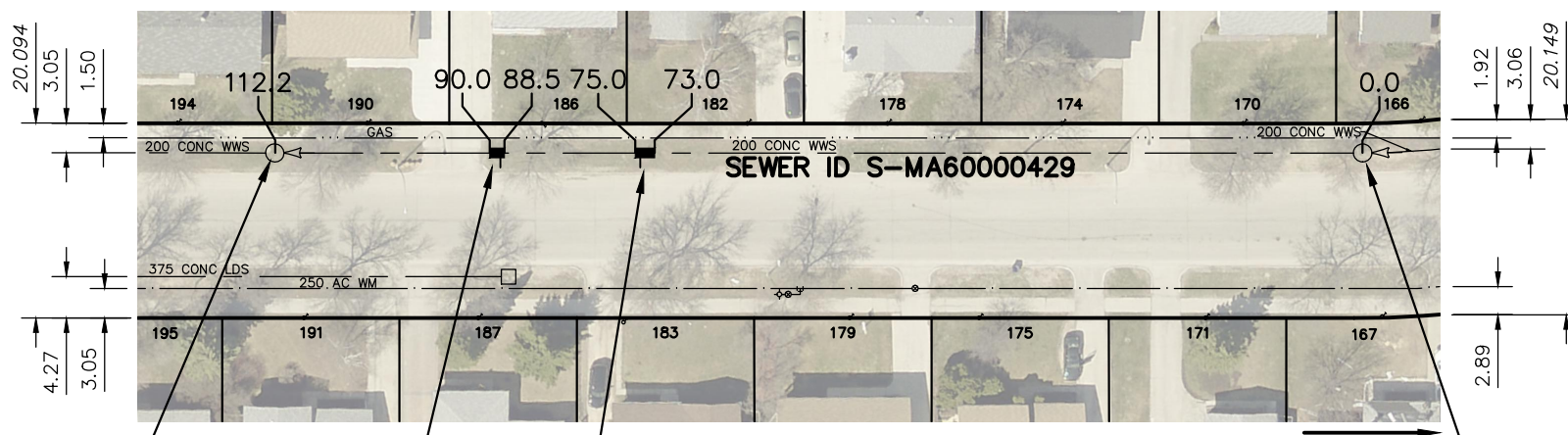
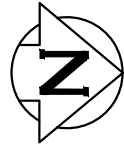


# CULLEN DRIVE



SEWER JUNCTION INFORMATION FROM SEWER VIDEO INSPECTION		
SEWER ID S-MA60000429		
DISTANCE FROM MH ID S-MH60000247		
DISTANCE	DIAMETER	CLOCK
11.1	100	1
16.8	100	12
30.3	100	2
34.9	150	11
47.3	100	2
53.4	100	10
65.8	100	2
71.9	100	10
74.5	100	11
84.2	100	2
88.9	100	10
102.8	100	1
107.4	100	10

**1.5 OF 200 SDR35 PVC SEWER REPAIR (SD-022A) INCLUDING 1 SERVICE CONNECTION**  
 S-MH60000248  
 RIM 238.25  
 INV N 234.04  
 INV S 234.04

**2.0 OF 200 SDR35 PVC SEWER REPAIR (SD-022A) INCLUDING 1 SERVICE CONNECTION**

LISMER CR  
 S-MH60000247  
 RIM 238.12  
 INV N 234.44  
 INV S 234.44

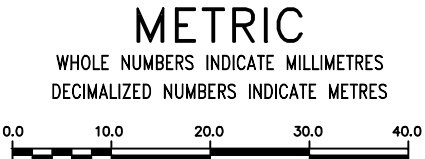
**FOR INDEX SEE 11339**

**WARNING**

IF POWER EQUIPMENT OR EXPLOSIVES ARE TO BE USED FOR EXCAVATION ON THIS PROJECT THE CONTRACTOR MUST:

- 1) NOTIFY THE GAS COMPANY OF THE PROPOSED LOCATION OF EXCAVATION.
- 2) TAKE PRECAUTION TO AVOID DAMAGE TO GAS COMPANY INSTALLATIONS.

SEE PROVINCIAL REGULATION 210/72 FOR DETAILS



LOCATION APPROVED UNDERGROUND STRUCTURES  SUPV. U/G STRUCTURES COMMITTEE _____ DATE _____  NOTE: LOCATION OF UNDERGROUND STRUCTURES AS SHOWN ARE BASED ON THE BEST INFORMATION AVAILABLE BUT NO GUARANTEE IS GIVEN THAT ALL EXISTING UTILITIES ARE SHOWN OR THAT THE GIVEN LOCATIONS ARE EXACT. CONFIRMATION OF EXISTENCE AND EXACT LOCATION OF ALL SERVICES MUST BE OBTAINED FROM THE INDIVIDUAL UTILITIES BEFORE PROCEEDING WITH CONSTRUCTION.	B.M. ELEV.	DESIGNED BY TS CHECKED BY SC		ENGINEER'S SEAL  <b>ORIGINAL SIGNED BY S.R.J. COURNOYER 16/12/15</b>  CONSULTANT DRAWING NUMBER _____	<b>THE CITY OF WINNIPEG</b> WATER AND WASTE DEPARTMENT ENGINEERING DIVISION  2016 SEWER MAIN RENEWALS BY EXTERNAL POINT REPAIR <b>CULLEN DRIVE</b> 1ST MH S LISMER CRESCENT TO 2ND MH S LISMER CRESCENT	SHEET <b>3</b> OF <b>17</b> CITY DRAWING NUMBER  <b>11340</b>			
		DRAWN BY RJ SCALE: HORIZONTAL 1:750 VERTICAL	APPROVED BY KZ RELEASED FOR CONSTRUCTION <b>K. ZUREK</b>						
NO. _____ REVISIONS _____ DATE _____ BY _____		DATE <b>2016 12 21</b>		PLOT DATE: 2016 12 21		BID OPPORTUNITY: 966-2016 CONTRACT NUMBER: 6		FILE PATH: R:\DRAWINGS\SEWER\2016 RENEWALS\Contract 6\Construction Dwg\CULLEN_S-MA60000429.dwg	