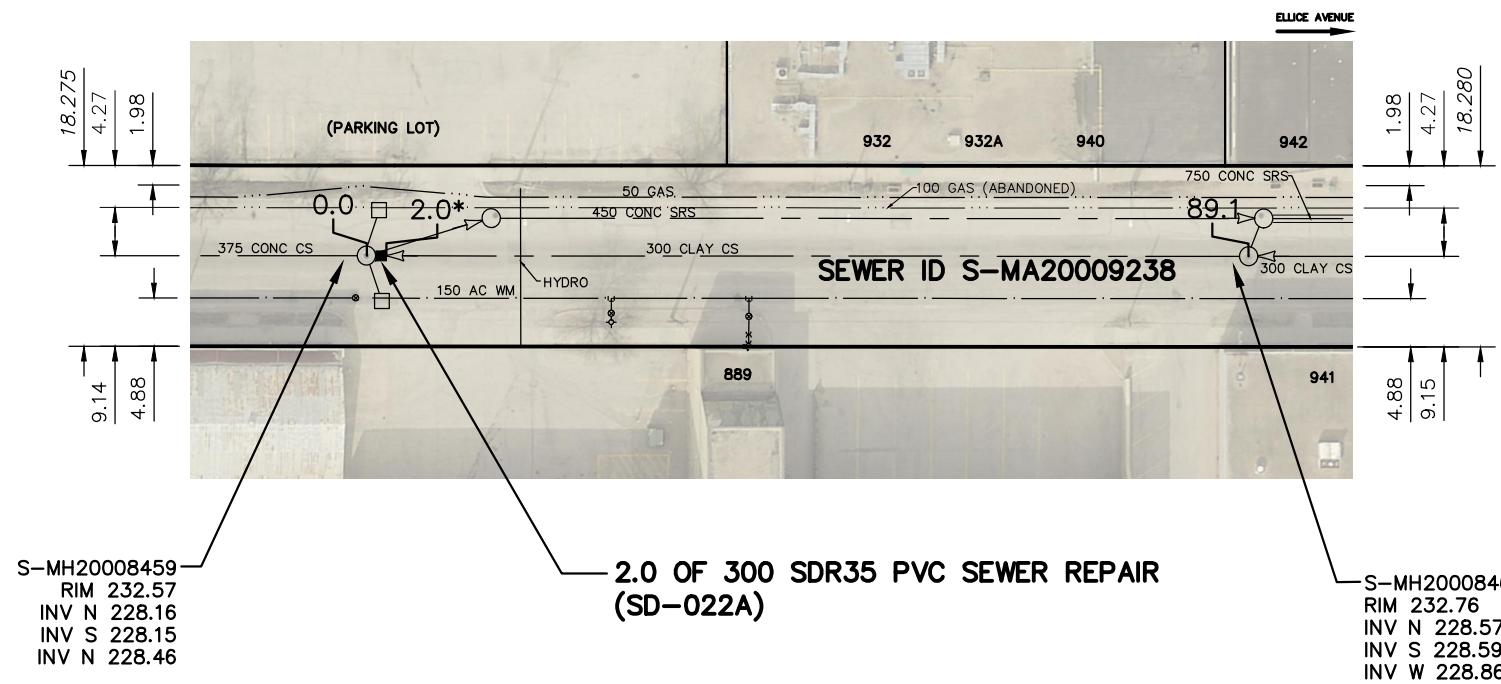
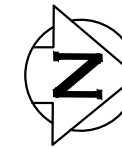


ERIN STREET



SEWER JUNCTION INFORMATION FROM SEWER VIDEO INSPECTION		
SEWER ID S-MA20009238		
DISTANCE FROM MH ID S-MH20008468		
DISTANCE	DIAMETER	CLOCK
9.5	150	1
17.7	150	1
29.4	150	11
38.2	150	12
40.6	150	1
41.2	150	10
62.7	150	1
74.9	150	10
79.8	150	1

FOR INDEX SEE 11308

WARNING

IF POWER EQUIPMENT OR EXPLOSIVES ARE TO BE USED FOR EXCAVATION ON THIS PROJECT THE CONTRACTOR MUST:

- 1) NOTIFY THE GAS COMPANY OF THE PROPOSED LOCATION OF EXCAVATION.
- 2) TAKE PRECAUTION TO AVOID DAMAGE TO GAS COMPANY INSTALLATIONS.

SEE PROVINCIAL REGULATION 210/72 FOR DETAILS

METRIC

WHOLE NUMBERS INDICATE MILLIMETRES
DECIMALIZED NUMBERS INDICATE METRES

*MEASURED UPSTREAM 0.0 10.0 20.0 30.0 40.0

LOCATION APPROVED UNDERGROUND STRUCTURES SUPV. U/G STRUCTURES COMMITTEE _____ DATE _____ NOTE: LOCATION OF UNDERGROUND STRUCTURES AS SHOWN ARE BASED ON THE BEST INFORMATION AVAILABLE BUT NO GUARANTEE IS GIVEN THAT ALL EXISTING UTILITIES ARE SHOWN OR THAT THE GIVEN LOCATIONS ARE EXACT. CONFIRMATION OF EXISTENCE AND EXACT LOCATION OF ALL SERVICES MUST BE OBTAINED FROM THE INDIVIDUAL UTILITIES BEFORE PROCEEDING WITH CONSTRUCTION.	B.M. ELEV.	DESIGNED BY TS CHECKED BY SC		ENGINEER'S SEAL ORIGINAL SIGNED BY S.R.J. COURNOYER 16/11/14 CONSULTANT DRAWING NUMBER -	THE CITY OF WINNIPEG WATER AND WASTE DEPARTMENT ENGINEERING DIVISION	SHEET 12 OF 29 CITY DRAWING NUMBER 11319
		DRAWN BY RJ APPROVED BY KZ				
NO. _____ REVISIONS _____ DATE _____ BY _____		DATE 2016 11 21 PLOT DATE: 2016 11 21		BID OPPORTUNITY: 967-2016 CONTRACT NUMBER: 6A		FILE PATH: R:\DRAWINGS\SEWER\2016 RENEWALS\Contract 6A\CONSTRUCTION\ERIN_S-MA20009238.dwg

2016 SEWER MAIN RENEWALS
BY EXTERNAL POINT REPAIR
ERIN STREET
1ST MH S OF ELLICE AVENUE TO
2ND MH S OF ELLICE AVENUE