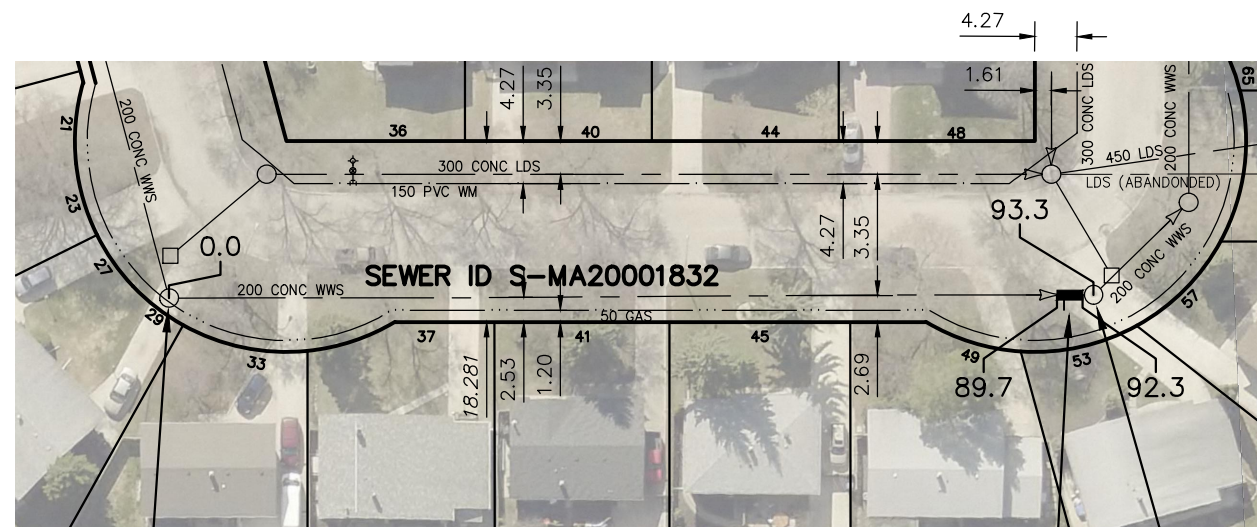


S LEG

SOUTH LAKE DRIVE

N LEG



SEWER JUNCTION INFORMATION FROM SEWER VIDEO INSPECTION		
SEWER ID S-MA20001832		
DISTANCE FROM MH ID S-MH20001661		
DISTANCE	DIAMETER	CLOCK
10.0	150	2
22.1	150	10
22.2	150	2
39.6	150	10
40.0	150	2
58.0	150	10
58.5	150	2
77.8	150	10
78.1	150	2
90.4	150	2

S-MH20001661
RIM 238.73
INV N 236.11
INV W 236.32

2.6 OF 200 SEWER REPAIR
(SD-022A) INCLUDING 1 SERVICE
CONNECTION

S-MH20001695
RIM 238.28
INV S 235.58
INV N 235.58

FOR INDEX SEE
11308

WARNING

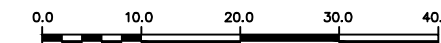
IF POWER EQUIPMENT OR EXPLOSIVES ARE TO BE USED FOR EXCAVATION ON THIS PROJECT THE CONTRACTOR MUST:

- 1) NOTIFY THE GAS COMPANY OF THE PROPOSED LOCATION OF EXCAVATION.
- 2) TAKE PRECAUTION TO AVOID DAMAGE TO GAS COMPANY INSTALLATIONS.

SEE PROVINCIAL REGULATION 210/72 FOR DETAILS

METRIC

WHOLE NUMBERS INDICATE MILLIMETRES
DECIMALIZED NUMBERS INDICATE METRES



LOCATION APPROVED
UNDERGROUND STRUCTURES

SUPV. U/G STRUCTURES COMMITTEE DATE

NOTE:

LOCATION OF UNDERGROUND STRUCTURES AS SHOWN ARE BASED ON THE BEST INFORMATION AVAILABLE BUT NO GUARANTEE IS GIVEN THAT ALL EXISTING UTILITIES ARE SHOWN OR THAT THE GIVEN LOCATIONS ARE EXACT. CONFIRMATION OF EXISTENCE AND EXACT LOCATION OF ALL SERVICES MUST BE OBTAINED FROM THE INDIVIDUAL UTILITIES BEFORE PROCEEDING WITH CONSTRUCTION.

B.M.
ELEV.

NO.	REVISIONS	DATE	BY

DESIGNED BY	TS	CHECKED BY	SC
DRAWN BY	AD	APPROVED BY	KZ
SCALE:	1:750	RELEASED FOR CONSTRUCTION	K. ZUREK
HORIZONTAL		DATE 2016 11 14	
VERTICAL	DATE 2016 11 18	DATE 2016 11 14	DATE 2016 11 14

ENGINEER'S SEAL

ORIGINAL
SIGNED BY
S.R.J.
COURNOYER
16/11/14

CONSULTANT DRAWING NUMBER



THE CITY OF WINNIPEG
WATER AND WASTE DEPARTMENT
ENGINEERING DIVISION

2016 SEWER MAIN RENEWALS
BY EXTERNAL POINT REPAIR

SOUTH LAKE DRIVE

MH AT S LEG OF SOUTH LAKE DRIVE TO
MH AT N LEG OF SOUTH LAKE DRIVE

SHEET 24 OF 29

CITY DRAWING NUMBER

11331

PLOT DATE: 2016 11 18

BID OPPORTUNITY: 967-2016
CONTRACT NUMBER: 6A

FILE PATH: R:\DRAWINGS\SEWER\2016 RENEWALS\Contract 6A\CONSTRUCTION\
FILE NAME: SOUTH_LAKE_S-MA20001832.dwg