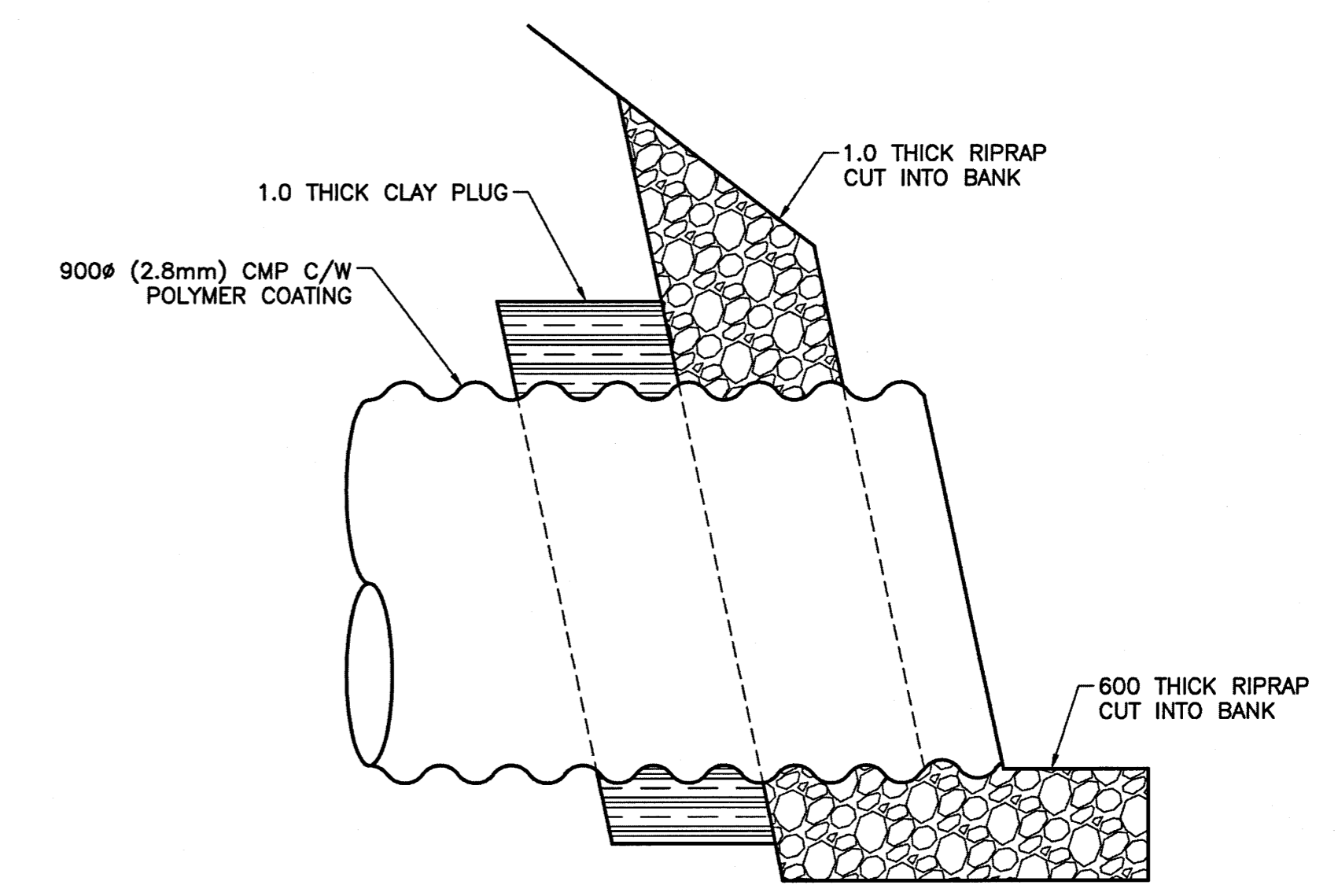
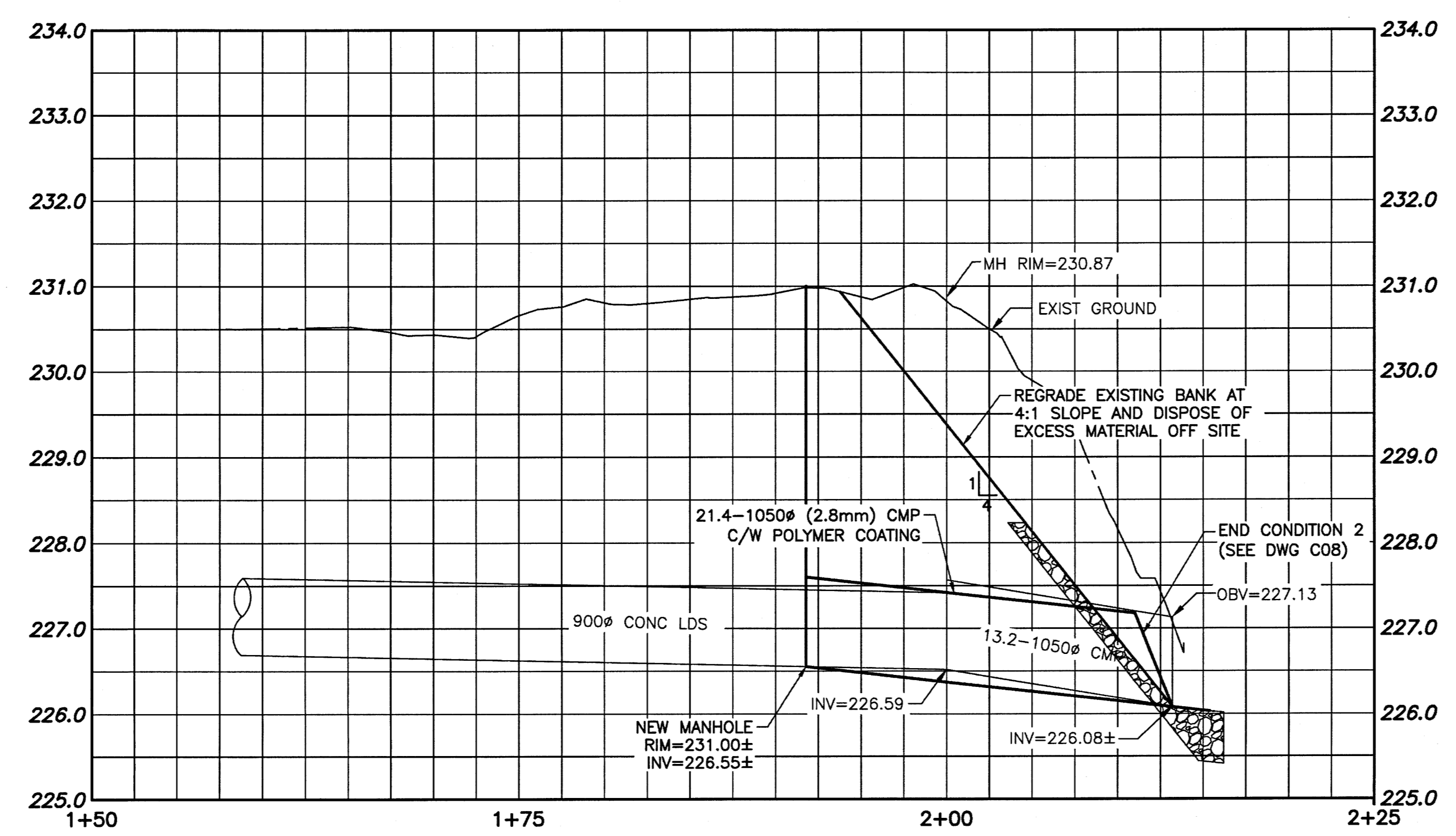
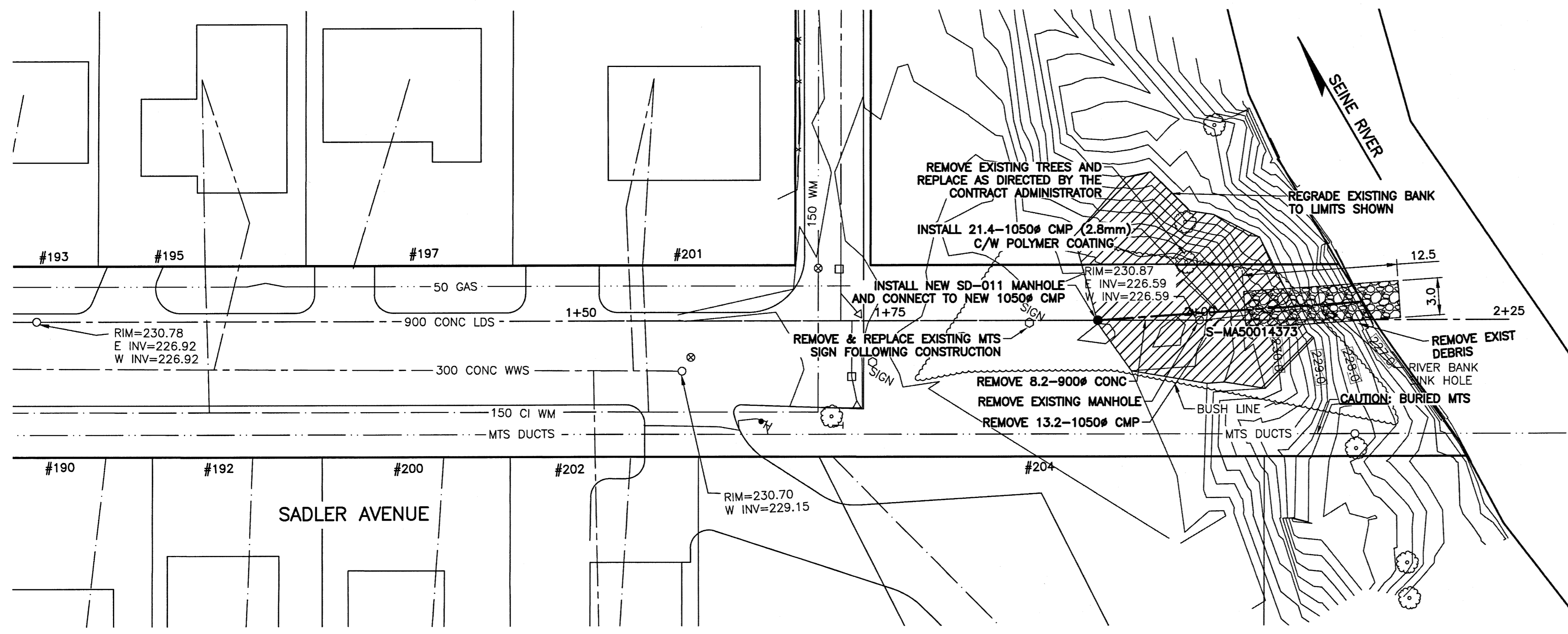


- NOTES:
1. CONSTRUCT CLAY COFFERDAM AT RIVER AS REQUIRED (SEE DWG LD-7993).
  2. WINTER WATER MAIN BREAKS MAY RESULT IN OVER TOPPING WEIR AND ENTIRE OUTFALL.
  3. ALL EXCAVATED MATERIAL WITHIN 107.0 OF THE REGULATED SUMMER RIVER LEVEL (RSRL) MUST BE REMOVED FROM SITE (NO STOCKPILING).



**CULVERT END DETAIL**  
SCALE: NTS



**WARNING**

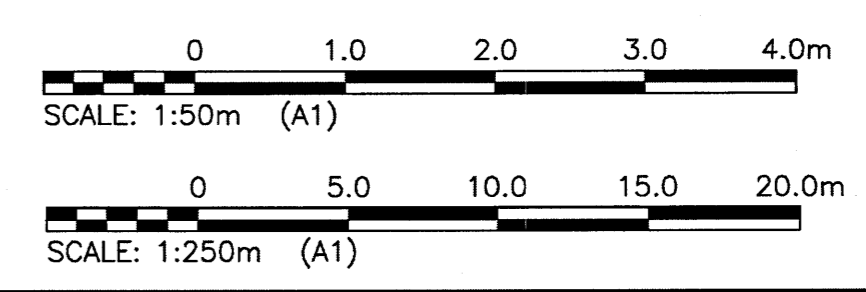
1. NOTIFY THE GAS COMPANY OF THE PROPOSED LOCATION OF EXCAVATION.
2. TAKE PRECAUTION TO AVOID DAMAGE TO GAS COMPANY INSTALLATIONS.
3. SEE PROVINCIAL REGULATION 210/72 FOR DETAILS.

**PROPERTY LIMITS DELINEATION**

DELINEATION OF PROPERTY LIMITS AS SHOWN ON THIS DWG DOES NOT REPRESENT A "LEGAL SURVEY". KGS GROUP MAKES NO REPRESENTATION OR WARRANTY AS TO THE ACCURACY OF PROPERTY LIMITS DELINEATED ON THIS DWG, NOR ON THE DIMENSIONAL ACCURACY OF DWG FEATURES RELATIVE TO THOSE PROPERTY LIMITS.

**METRIC**

WHOLE NUMBERS INDICATE MILLIMETRES  
DECIMALIZED NUMBERS INDICATE METRES



File Name: U:\P\16-0107-021\16-0107-021\_CALL.dwg - Tab: C07 Plotted By: dweber 16/11/03 [Thu 3:40pm] A:\PLOT SCALE=1

150 WM	WATERMAIN	150 WM	HYDRO				
⊕	HYDRANT	⊕	M.T.S.				
⊙	VALVE	⊙	PROPERTY LINE				
300 LDS	LAND DRAINAGE SEWER	300 LDS	SURVEY BAR				
250 WWS	WASTE WATER SEWER	250 WWS	LIGHT STANDARD				
○	MANHOLE	●	HYDRO POLE				
□	CATCH BASIN	■	GUY WIRE				
▽	CURB INLET	○	SIGN				
+	JUNCTIONS	+	BUSH LINE				
▬	CULVERT	▬	FENCE				
▬	GAS	▬	ELEVATION	(32.231)			
EXISTING	LEGEND-PLAN	PROPOSED	EXISTING	LEGEND-PROFILE	PROPOSED	EXISTING	LEGEND-PROFILE

**LOCATION APPROVED UNDERGROUND STRUCTURES**

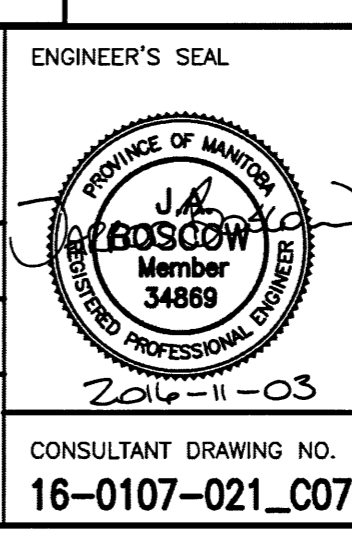
SUPV. U/G STRUCTURES COMMITTEE DATE

NOTE:  
LOCATION OF UNDERGROUND STRUCTURES AS SHOWN ARE BASED ON THE BEST INFORMATION AVAILABLE BUT NO GUARANTEE IS GIVEN THAT ALL EXISTING UTILITIES ARE SHOWN OR THAT THE GIVEN LOCATIONS ARE EXACT. CONFIRMATION OF EXISTENCE AND EXACT LOCATION OF ALL SERVICES MUST BE OBTAINED FROM THE INDIVIDUAL UTILITIES BEFORE PROCEEDING WITH CONSTRUCTION.

B.M. KGS_BASE	ELEV=249.213	NAD83	CSRS	CGVD28
NO.	ISSUED FOR CONSTRUCTION	03/11/16	DATE	BY
0				

**KGS GROUP CONSULTING ENGINEERS**

DESIGNED BY	JB	CHECKED BY	RBO
DRAWN BY	DMW	APPROVED BY	
HOR. SCALE:	1:250	RELEASED FOR CONSTRUCTION	
VERTICAL:	1:50	DATE	29/09/16



**THE CITY OF WINNIPEG WATER & WASTE DEPARTMENT**

2017 OUTFALL RENEWAL/REHABILITATION PROGRAM  
SADLER AVENUE OUTFALL (SE-44)  
PLAN AND PROFILE  
S-MA50014373

CONSULTANT DRAWING NO. 16-0107-021\_C07

SHEET 07 OF 08  
CAD FILE DRAWING NUMBER 16-0107-021\_CALL  
CITY DRAWING NUMBER LD-7992