

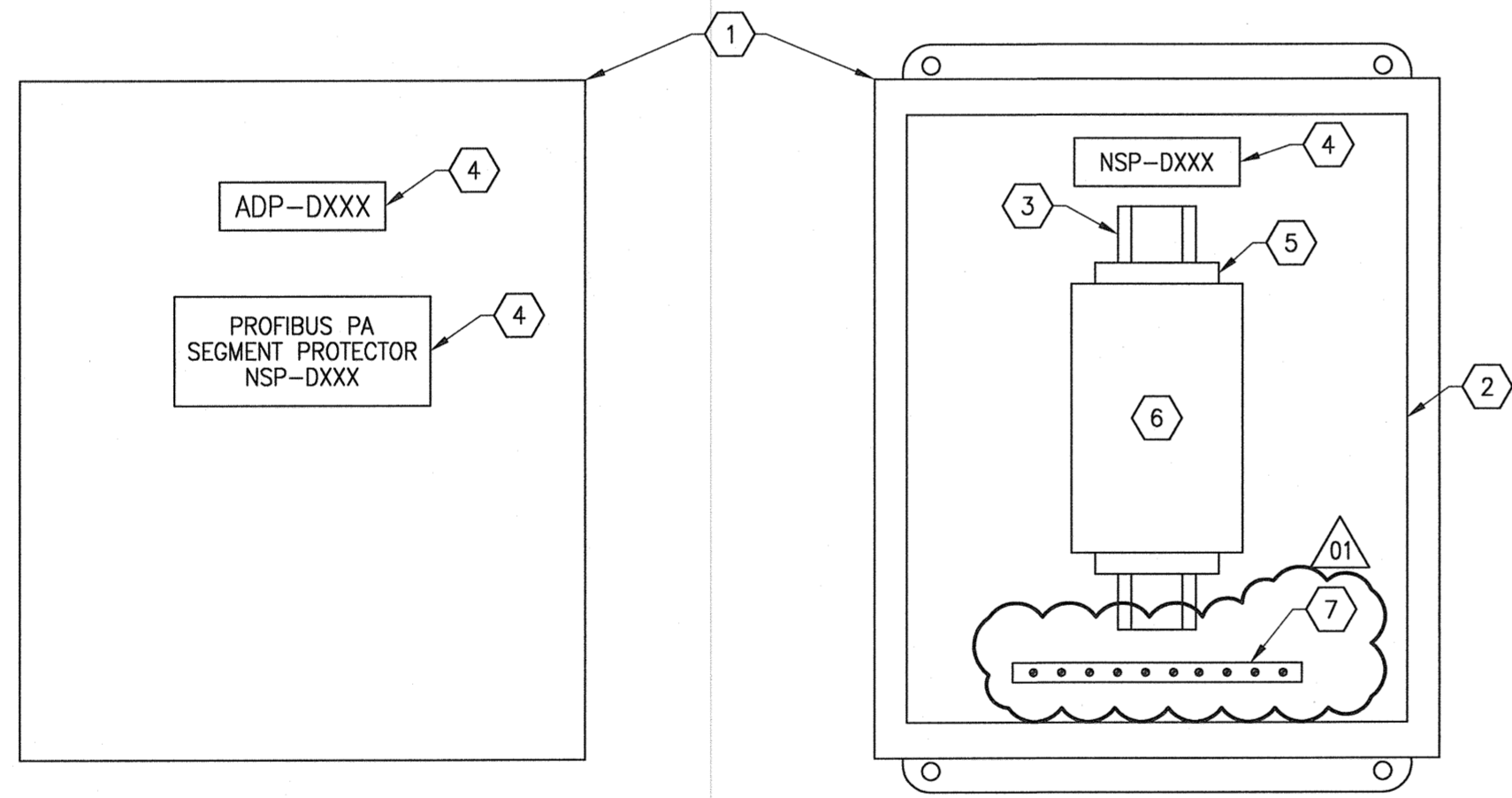
EXTERIOR PANEL VIEW
1 : 3

INTERIOR PANEL VIEW
1 : 3

BILL OF MATERIAL				
ITEM	QUANTITY	DESCRIPTION	MANUFACTURER	CATALOG NUMBER
1	1	TYPE 4X CONTINUOUS HINGE WALL-MOUNT ENCLOSURE WITH CLAMPS - 305x254x152mm	HOFFMAN	A12106CHNFSS6
2	1	PANEL FOR ITEM 1	HOFFMAN	A12P10
3	AS REQ'D	35mm DIN RAIL	PHOENIX CONTACT	0801733
4	AS REQ'D	LAMACOIDS	-	-
5	AS REQ'D	TERMINAL END CLAMP - CLIPFIX 35	PHOENIX CONTACT	3022218
6	1	R2 PROFIBUS PA SEGMENT PROTECTOR	PEPPERL+FUCHS	R2-SP-IC6
7	1	GROUND BAR, 10 TAPS	ILSCO	D167-10

DEVICE PANEL SCHEDULE		
DEVICE PANEL IDENTIFIERS	SEGMENT PROTECTOR IDENTIFIERS	DESCRIPTION
ADP-D850-1	NSP-D850-1	BIOFILTER ROOF PROFIBUS PA BRANCH 1 SEGMENT PROTECTOR DEVICE PANEL
ADP-D850-2	NSP-D850-2	FERMENTERS/THICKENERS ROOF PROFIBUS PA SEGMENT PROTECTOR DEVICE PANEL
ADP-D860	NSP-D860	FERMENTERS/THICKENERS ROOF PROFIBUS PA BRANCH 2 SEGMENT PROTECTOR DEVICE PANEL

NOTES:
1. DEVICE PANEL AND SEGMENT PROTECTOR LAMACOIDS SHALL BE LABELED AS PER DEVICE PANEL SCHEDULE.



EXTERIOR PANEL VIEW
1 : 3

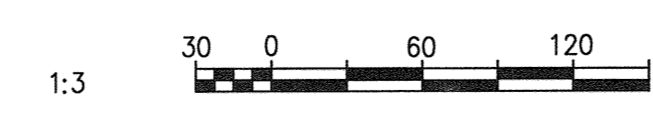
INTERIOR PANEL VIEW
1 : 3

BILL OF MATERIAL				
ITEM	QUANTITY	DESCRIPTION	MANUFACTURER	CATALOG NUMBER
1	1	TYPE 4 CONTINUOUS HINGE WALL-MOUNT ENCLOSURE WITH CLAMPS - 305x254x127mm	HOFFMAN	A1210CHNF
2	1	PANEL FOR ITEM 1	HOFFMAN	A12P10
3	AS REQ'D	35mm DIN RAIL	PHOENIX CONTACT	0801733
4	AS REQ'D	LAMACOIDS	-	-
5	AS REQ'D	TERMINAL END CLAMP - CLIPFIX 35	PHOENIX CONTACT	3022218
6	1	R2 PROFIBUS PA SEGMENT PROTECTOR	PEPPERL+FUCHS	R2-SP-IC6
7	1	GROUND BAR, 10 TAPS	ILSCO	D167-10

DEVICE PANEL SCHEDULE		
DEVICE PANEL IDENTIFIERS	SEGMENT PROTECTOR IDENTIFIERS	DESCRIPTION
ADP-D851-1	NSP-D851-1	RDT PUMP ROOM PROFIBUS PA BRANCH 1 SEGMENT PROTECTOR DEVICE PANEL
ADP-D851-2	NSP-D851-2	SECONDARY CLARIFIER BASEMENT PROFIBUS PA BRANCH 1 SEGMENT PROTECTOR DEVICE PANEL
ADP-D852-1	NSP-D852-1	GALLERY 5 - NORTH PROFIBUS PA BRANCH 1 SEGMENT PROTECTOR DEVICE PANEL
ADP-D852-2	NSP-D852-2	GALLERY 5 - NORTH PROFIBUS PA BRANCH 1 SEGMENT PROTECTOR DEVICE PANEL
ADP-D853-1	NSP-D853-1	GALLERY 5 - SOUTH PROFIBUS PA BRANCH 1 SEGMENT PROTECTOR DEVICE PANEL
ADP-D861-1	NSP-D861-1	RDT PUMP ROOM PROFIBUS PA BRANCH 2 SEGMENT PROTECTOR DEVICE PANEL
ADP-D861-2	NSP-D861-2	RDT PUMP ROOM PROFIBUS PA BRANCH 2 SEGMENT PROTECTOR DEVICE PANEL
ADP-D862-1	NSP-D862-1	GALLERY 5 - NORTH PROFIBUS PA BRANCH 2 SEGMENT PROTECTOR DEVICE PANEL
ADP-D862-2	NSP-D862-2	GALLERY 5 - NORTH PROFIBUS PA BRANCH 2 SEGMENT PROTECTOR DEVICE PANEL

NOTES:
1. DEVICE PANEL AND SEGMENT PROTECTOR LAMACOIDS SHALL BE LABELED AS PER DEVICE PANEL SCHEDULE.

REFERENCE DRAWINGS	DESCRIPTION
1-0102-AGAD-D001	INSTRUMENT LOCATION PLAN, LOWER LEVEL PLAN
1-0102-AGAD-D002	INSTRUMENT LOCATION PLAN, GALLERY 5 - NORTH LAYOUT
1-0102-AGAD-D004	INSTRUMENT LOCATION PLAN, FERMENTERS/THICKENERS ROOF PLAN
1-0102-AGAD-D005	INSTRUMENT LOCATION PLAN, SECONDARY CLARIFIER BASEMENT PLAN
1-0102-AGAD-T001	INSTRUMENT LOCATION PLAN, HUMIDIFIER ROOM AND GALLERY 5 - SOUTH LAYOUT
1-0102-AGAD-T003	INSTRUMENT LOCATION PLAN, ROOF PLAN



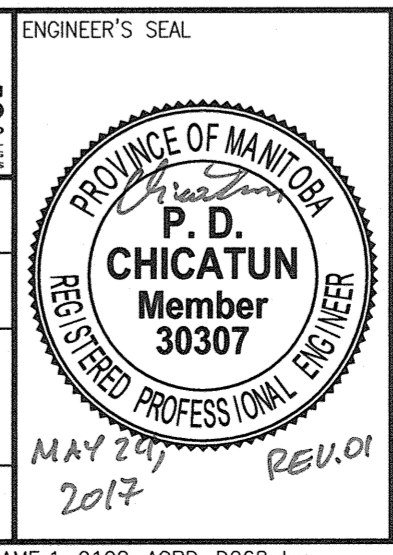
NO.	REVISIONS	DATE	DESIGN	CHECK
01	ISSUED FOR ADDENDUM 1 - 976-2017	2017/05/26	SB	PC
00	ISSUED FOR CONSTRUCTION - 976-2017	2017/04/05	MW	PC

CH2MHILL
SNC-Lavalin

DESIGNED BY: M. WANG
DRAWN BY: M. WANG
SCALE: 1:3

CHECKED BY: P. CHICATUN
APPROVED BY: E. RYCZKOWSKI
ISSUED FOR CONSTRUCTION BY: J. SHUMKA
DATE: 2016/08/25
DATE: 2017/04/05

CONSULTANT NO.: 474248



THE CITY OF WINNIPEG
WATER AND WASTE DEPARTMENT

SOUTH END WATER POLLUTION CONTROL CENTRE
SEWPPCC UPGRADING/EXPANSION PROJECT
AUTOMATION - CABINET LAYOUT
FERMENTERS/THICKENERS/BIOFILTERS
PROFIBUS PA SEGMENT PROTECTOR DEVICE PANEL

CITY DRAWING NUMBER: 1-0102-ACBD-D068
SHEET: 001
REV: 01
SIZE: A1