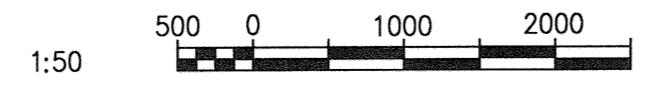


- GENERAL NOTES:**
1. PROVIDE ALL INTERCONNECTING WIRING/CABLING REQUIRED BY THE BLOWER VENDOR FOR OPERATION OF THEIR PACKAGED SYSTEM AS PER VENDOR PROVIDED SHOP DRAWINGS. COORDINATE WITH VENDOR AS REQUIRED TO INCLUDE ALL COSTS AT TIME OF TENDER. PROVIDE WIRE AND CABLE IDENTIFICATION CONSISTENT WITH THE CITY'S IDENTIFICATION STANDARD. WIRING/CABLING TO BE ARMORED CABLE UNLESS OTHERWISE APPROVED BY THE CONTRACT ADMINISTRATOR.
 2. SEE AGAD-R002 FOR ADDITIONAL NOTES.

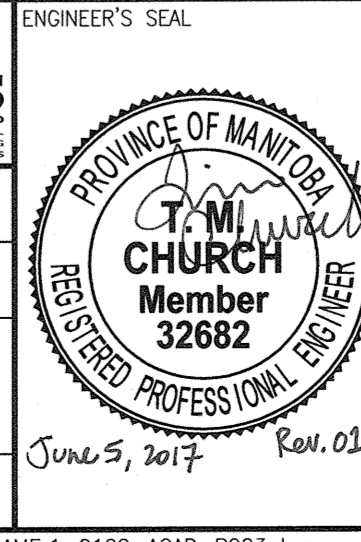
- SPECIFIC NOTES**
- 1 PROVIDE CONDUIT SLEEVES THROUGH AIR INTAKE PLENUM WALL FOR SENSOR CABLES. PROVIDE GLAND SEAL FOR CONDUIT.
 - 2 LOCAL CONTROL PANELS FOR THE BLOWERS ARE MOUNTED ON THE ASSOCIATED BLOWER SKID.
 - 3 LOCATE SENSORS IN INCOMING AIR FLOW STREAM.

BLOWER ROOM
1 : 50



01	ISSUED FOR ADDENDUM 2 - 976-2016	2017/06/09	SSB	TMC
00	ISSUED FOR CONSTRUCTION - 976-2016	2017/04/05	MW	TMC
NO.	REVISIONS	DATE	DESIGN	CHECK

CH2MHILL.	
DESIGNED BY: M. WANG	CHECKED BY: T. CHURCH
DRAWN BY: M. WANG	APPROVED BY: E. RYCKOWSKI
SCALE: 1:50	ISSUED FOR CONSTRUCTION BY: J. SHUMKA
DATE: 2015/09/04	DATE: 2017/04/05
CONSULTANT NO.: 474248	



THE CITY OF WINNIPEG WATER AND WASTE DEPARTMENT			
SOUTH END WATER POLLUTION CONTROL CENTRE SEWPPC UPGRADING/EXPANSION PROJECT AUTOMATION - INSTRUMENT LOCATION PLAN BIOREACTORS/BLOWER BUILDING BLOWER ROOM LAYOUT			
CITY DRAWING NUMBER	SHEET	REV.	SIZE
1-0102-AGAD-R003	001	01	A1

REFERENCE DRAWINGS	DESCRIPTION