

FRONT PANEL VIEW
SCALE 1:5

BACK PANEL VIEW
SCALE 1:5

BILL OF MATERIAL				
ITEM	QTY	DESCRIPTION	MANUFACTURER	CATALOG NUMBER
1	1	PROLINE FLOTEK PC SERVER CABINET - 2161x606x1099	HOFFMAN	PSCPC21611B
2	2	BLANKING PANEL 5U	HOFFMAN	P19RPP5UB
3	1	BLANKING PANEL 1U	HOFFMAN	P19RPP1UB
4	1	BLANKING PANEL 2U	HOFFMAN	P19RPP2UB
5	-	-	-	-
6	-	-	-	-
7	1	TERMINAL SERVER	HP	PROLIANT DL380
8	1	PIVOTING KEYBOARD SHELF WITH MOUSE TRAY	HOFFMAN	P19KBPVT
9	1	TOOL-LESS SHELF	HOFFMAN	D19FV912B
10	1	19" MONITOR	-	-
11	4	1U, 20A, 120V, 5-20(10), 5-20P BASIC RACK PDU	APC	AP9563
12	1	KEYBOARD AND MOUSE	-	-
13	1	4 PORT USB KVM SWITCH	-	-
14	AS REQ'D	LAMACOIDS	-	-
15	1	SECURITY TRUVISION DVR 16 CHANNELS, ANALOG OR IP, H.264, 8TB STORAGE	INTERLOGIX	TVR-4408HD-8T
16	2	SERV SWITCH CATX DVI/HDMI+ USB EXTENDER WITH TWO TABLE/WALL MOUNT KITS AND USB HIGH SPEED MEMORY OPTION LICENSE	BLACKBOX	ACX300 (2)ACX300-TMK
17	1	PROCESS TRUVISION NVR 8 IP CHANNELS, H.264, 4TB STORAGE	INTERLOGIX	TWN-2108-4T

SPECIFIC NOTES:

- SERVERS BAY 1 POWER SUPPLY TO BE FED FROM UPS PDU. SERVERS BAY 2 POWER SUPPLY TO BE FED FROM NON-ESSENTIAL PDU. MONITOR KVM AND SECURITY DVR SWITCH TO BE FED FROM UPS PDU.
- PROVIDE TWO SINGLE GANG OUTLET BOXES, EACH WITH "UPS A"/"UPS B" LAMACOIDS. CONNECT OUTLET BOXES TO UPS PANEL PNL-2X-CCT.17 AND PNL-2X-CCT.19.
- PROVIDE TWO SINGLE GANG OUTLET BOX, EACH WITH "NON-UPS A"/"NON-UPS B" LAMACOIDS. CONNECT OUTLET BOX TO NON-ESSENTIAL PANEL PNL-1C-CCT.2 AND PNL-1C-CCT.40.
- PROVIDE LAMACOIDS "CP-M902" ON FRONT AND REAR DOORS.
- CONNECT EXISTING BNC ANALOG SECURITY VIDEO CHANNELS TO NEW DVR. PROVIDE EXTENSION CABLES AS REQUIRED. DVR TO BE PROGRAMMED BY CERTIFIED MANUFACTURER'S REPRESENTATIVE. COORDINATE WITH CONTRACT ADMINISTRATOR FOR CITY'S SETUP REQUIREMENTS.
- SECURITY DVR KVM EXTENDER TRANSMITTER TO BE LOCATED IN CP-M902. SECURITY DVR KVM EXTENDER RECEIVER TO BE INSTALLED IN MAIN CONTROL ROOM (M123) OPERATOR DESK. INSTALL CAT 6 STP CABLE IN CONDUIT BETWEEN CP-M902 AND SECURITY NETWORK JACK IN MAIN CONTROL ROOM OPERATOR DESK (SEE DRAWING 1-0102-EGAD-M001-001 - MAIN CONTROL ROOM LAYOUT).
- PROCESS NVR KVM EXTENDER TRANSMITTER TO BE LOCATED IN CP-M902. PROCESS NVR KVM EXTENDER RECEIVER TO BE INSTALLED IN MAIN CONTROL ROOM (M123) OPERATOR DESK. INSTALL CAT 6 STP CABLE IN CONDUIT BETWEEN CP-M902 AND SECURITY NETWORK JACK IN MAIN CONTROL ROOM OPERATOR DESK (SEE DRAWING 1-0102-EGAD-M001-001 - MAIN CONTROL ROOM LAYOUT).
- NVR TO BE PROGRAMMED BY CERTIFIED MANUFACTURER'S REPRESENTATIVE. COORDINATE WITH CONTRACT ADMINISTRATOR FOR CITY SETUP REQUIREMENT.

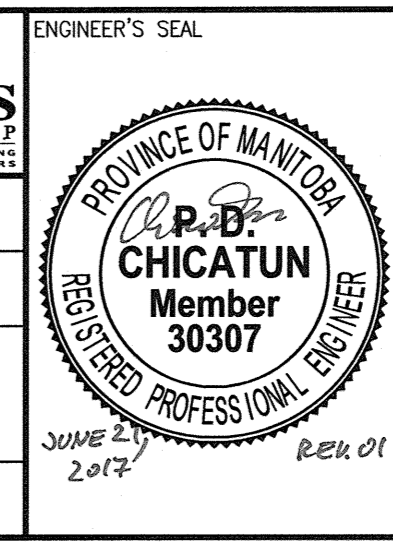
REFERENCE DRAWINGS	DESCRIPTION



NO.	REVISIONS	DATE	DESIGN	CHECK
01	ISSUED FOR ADDENDUM 3 - 976-2016	2017/06/23	TMC	PC
00	ISSUED FOR CONSTRUCTION - 976-2016	2017/04/05	MW	PC

CH2MHILL
SNC-Lavalin
DESIGNED BY: M. WANG
DRAWN BY: M. WANG
SCALE: 1:5
DATE: 2015/07/02
CONSULTANT NO.: 474248

CHECKED BY: P. CHICATUN
APPROVED BY: E. RYCKOWSKI
ISSUED FOR CONSTRUCTION BY: J. SHUMKA
DATE: 2017/04/05



THE CITY OF WINNIPEG
WATER AND WASTE DEPARTMENT

SOUTH END WATER POLLUTION CONTROL CENTRE
SEWPC UPGRADING/EXPANSION PROJECT
AUTOMATION - CABINET LAYOUT
ADMINISTRATION BUILDING
CP-M902 SERVER CABINET

CITY DRAWING NUMBER: 1-0102-ACBD-M906
SHEET: 001
REV: 01
SIZE: A1