

LEGEND:

- RJ45 PORT OR PATCH PANEL
- FIBRE PORT OR PATCH PANEL
- WALL PLATE RJ45 JACK
- CAT6 CABLE
- FIBRE CABLE
- LC FIBRE CONNECTOR
- RJ45 CONNECTOR UNSHIELDED
- RJ45 CONNECTOR SHIELDED

SPECIFIC NOTES:

- ① SEE DWG. EBDG-C002 FOR CABLE CONNECTION.

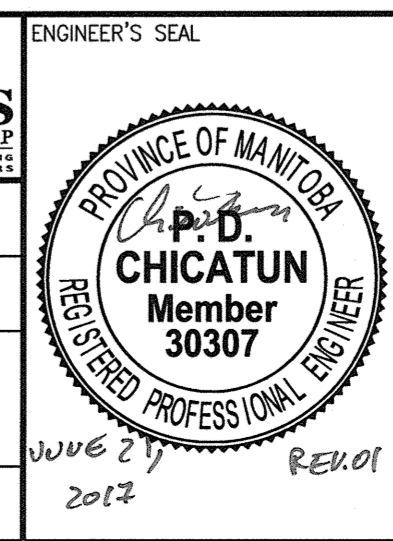
1-0102-ANET-A001	SUPERVISORY, CONTROL AND SERVER NETWORK OVERVIEW
1-0102-ANET-A005	FACILITY FIBRE ALLOCATION
1-0102-ABDG-C001	CONTROL SYSTEM ARCHITECTURE, CHEMICAL/ELECTRICAL BUILDING
REFERENCE DRAWINGS	DESCRIPTION



NO.	REVISIONS	DATE	DESIGN	CHECK
01	ISSUED FOR ADDENDUM 3 - 976-2016	2017/06/23	PC	TMC
00	ISSUED FOR CONSTRUCTION - 976-2016	2017/04/05	PC	TMC

CH2MHILL
 SNC-LAVALIN
 DESIGNED BY: P. CHICATUN
 DRAWN BY: M. WANG
 SCALE: NTS
 DATE: 2016/05/10
 CONSULTANT NO.: 474248

CHECKED BY: T. CHURCH
 APPROVED BY: E. RYCZKOWSKI
 ISSUED FOR CONSTRUCTION BY: J. SHUMKA
 DATE: 2017/04/05



THE CITY OF WINNIPEG
 WATER AND WASTE DEPARTMENT

SOUTH END WATER POLLUTION CONTROL CENTRE
 SEWPCC UPGRADING/EXPANSION PROJECT
 AUTOMATION - NETWORK DIAGRAM
 CHEMICAL/ELECTRICAL BUILDING
 CONTROL NETWORK

CITY DRAWING NUMBER: 1-0102-ANET-C002
 SHEET: 003
 REV: 01
 SIZE: A1