

FROM TFS PUMPS  
P-D418 AND P-D419

1-0102-PPID-D408 150-TFS-SS01

FROM TFS HOPPER  
TK-D417-2

1-0102-PPID-D407 100-TFS-SS01

FLUSHING WATER

1-0102-PPID-D408 38-FSW-SS01

FROM SLUDGE HOLDING TANKS  
HIGH HIGH LEVEL SWITCHES

1-0102-PPID-S207

FROM LIC-D4175

1-0102-PPID-D407

100-TFS-SS01

PSV-D4209

(3)  
TE  
D4200  
1-3  
WDC

P-D420.MTR  
AS  
1200 rpm  
14.9 kW  
600V, 3P

PG  
D4202

PSH  
D4202

P-D420  
TFS PUMP  
33 m<sup>3</sup>/hr @800 kPag

100

100

100-TFS-SS01

100 X 150

TO SLUDGE HOLDING TANKS  
V-S416, V-S417  
AND V-S418

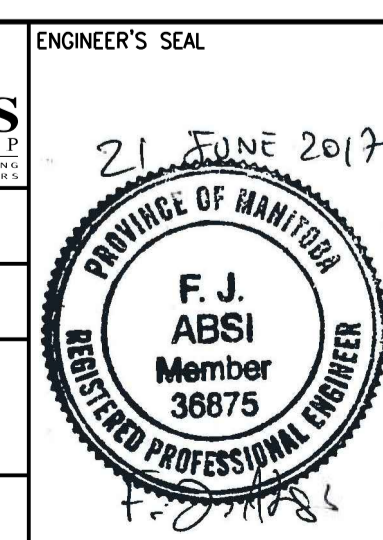
150-TFS-SS01

1-0102-PPID-S207



NO.	REVISIONS	DATE	DESIGN	CHECK
01	ISSUED FOR ADDENDUM 3 - 976-2016	2017/06/21	S.S.B.	T.M.C.
00	ISSUED FOR CONSTRUCTION - 976-2016	2017/04/05	J.C.	J.C.

DESIGNED BY: B. EDGAR	CHECKED BY: F. ABSI
DRAWN BY: A. CLARKE	APPROVED BY: H.T. FREIHAMMER
SCALE: NTS	ISSUED FOR CONSTRUCTION BY: J. SHUMKA
DATE: 2017/04/05	DATE: 2017/04/05
CONSULTANT NO.: 474248	



THE CITY OF WINNIPEG  
 WATER AND WASTE DEPARTMENT  
 SOUTH END WATER POLLUTION CONTROL CENTRE  
 SEWPCC UPGRADING/EXPANSION PROJECT  
 PROCESS AND INSTRUMENTATION DIAGRAM  
 TFS PUMP P-D420  
 CITY DRAWING NUMBER: 1-0102-PPID-D409 | SHEET: 001 | REV: 01 | SIZE: A1