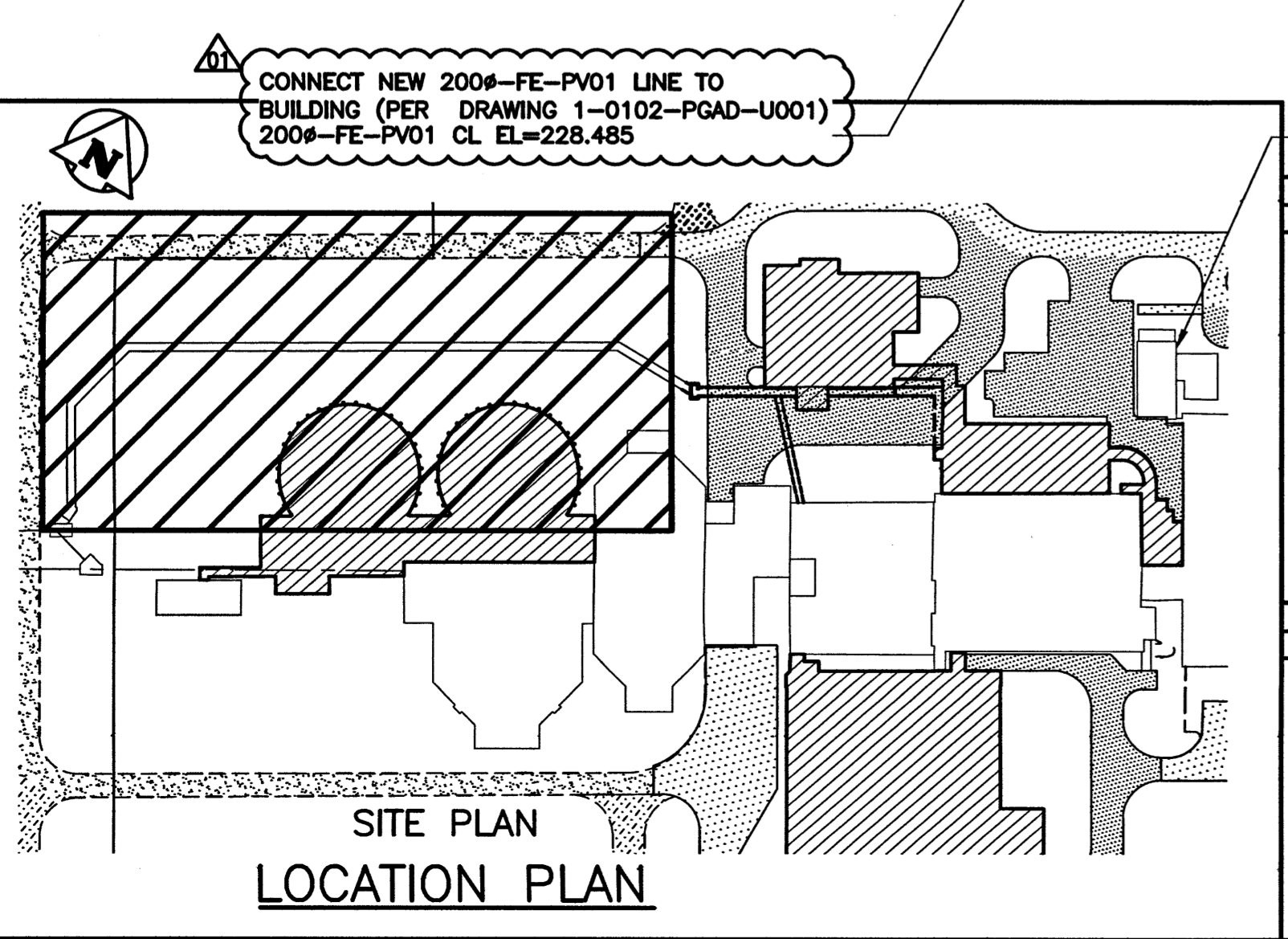
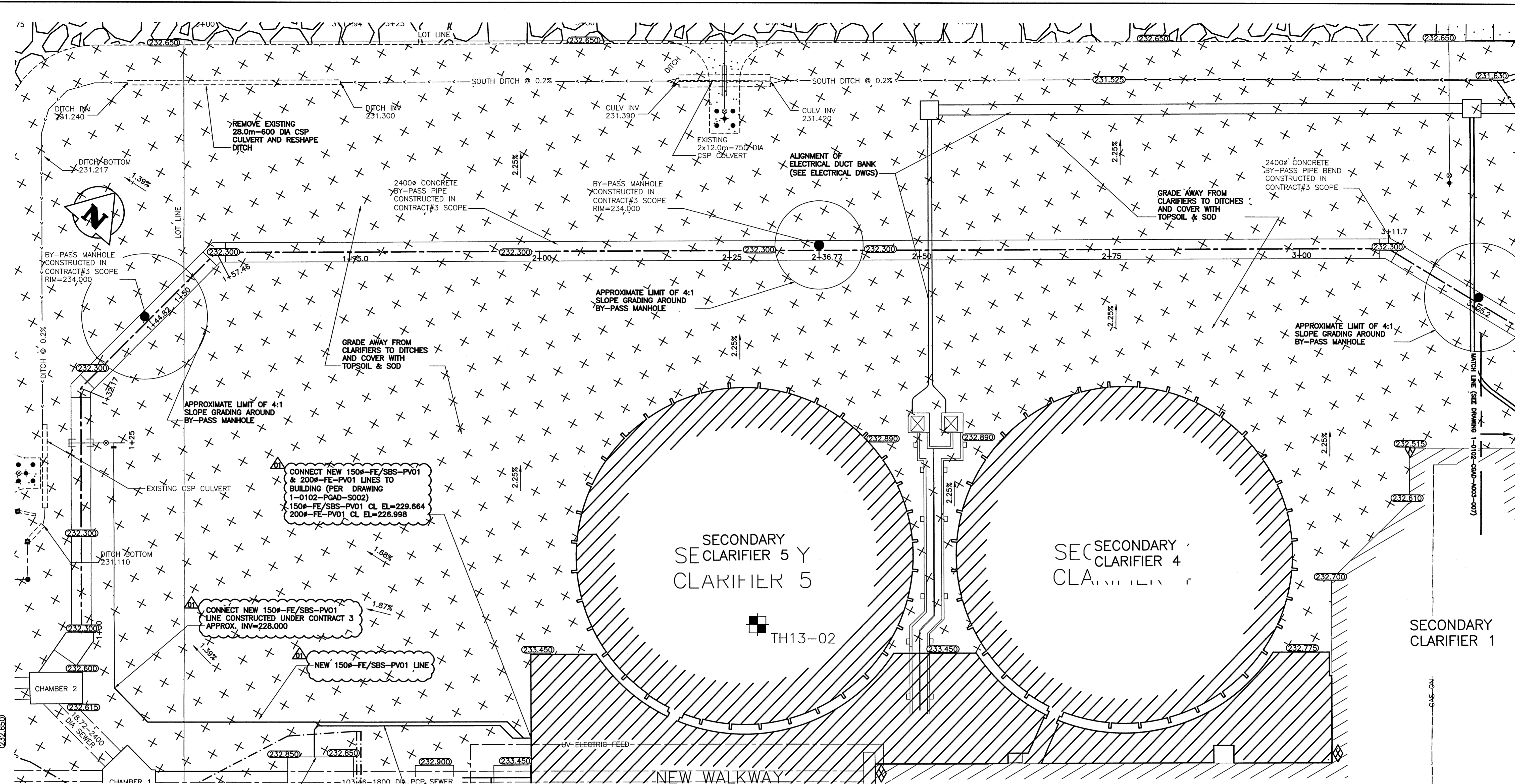


A1 SIZE - 594mm x 841mm

LAST SAVE: 2017/07/06 - 11:50am
 PATH: P:\Projects\2013\13-0338-002\DWG\Mun\Contract 4.1-1-0102-CGAD-A003-010.dwg

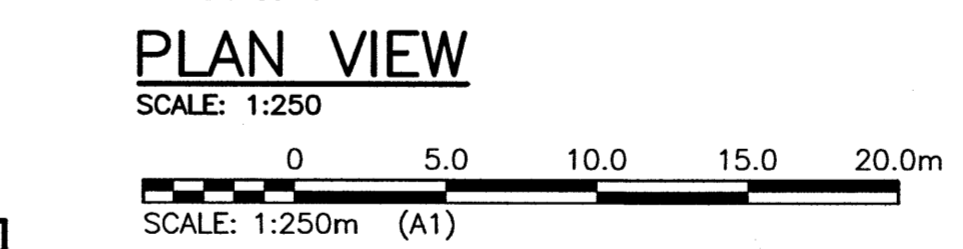


LEGEND

ITEM	EXISTING	NEW	ABANDONED
CONSTRUCTION ACCESS ROAD/ GRAVEL LAYDOWN AREA TO BE COVERED IN TOPSOIL & SOD			
DITCHES AND OTHER LANDSCAPE AREAS TO BE FINISHED WITH TOPSOIL & SOD			
NEW GRAVEL SURFACE ROADWAY/PARKING AREA			
NEW CONCRETE SURFACE PAVEMENT			
NEW ASPHALT SURFACE PAVEMENT			

ITEM	EXISTING	NEW	ABANDONED
WM VALVE	⊗	⊕	⊖
WM HYDRANT	⊕	⊕	⊖
SEWER	○	○	○
SEWER MH	□	□	□
SEWER CB	○	○	○
MTS	○	○	○
MTS MH	○	○	○
HYDRO	○	○	○
HYDRO LS	○	○	○
HYDRO POLE	○	○	○

ITEM	EXISTING	NEW	ABANDONED
GAS	—	—	—
DITCH	—	—	—
FENCE	—	—	—
SIGN	—	—	—
BOLLARD	—	—	—
TREE	—	—	—
BUSH	—	—	—
ELEVATION	233.240	233.450	
CULVERT	—	—	—



NOTES:

- ALL WORK SHALL BE PERFORMED IN ACCORDANCE WITH THE LATEST REVISION OF THE CITY OF WINNIPEG STANDARD CONSTRUCTION SPECIFICATIONS.
- CONTRACTOR SHALL OBTAIN LOCATES FOR ALL UNDERGROUND UTILITIES PRIOR TO CONSTRUCTION.
- CONTRACTOR SHALL USE MATERIAL FROM EXCAVATION STOCKPILES WEST OF PLANT FOR BACKFILL MATERIAL AROUND CLARIFIERS.

ITEMS SHOWN AS EXISTING ARE BASED ON AVAILABLE DOCUMENTATION AND MAY NOT ACTUALLY BE REPRESENTATIVE OF THE EXISTING INFRASTRUCTURE. THE DESIGN ENGINEER IS ONLY RESPONSIBLE FOR INFRASTRUCTURE THAT IS SHOWN AS A NEW INSTALLATION. THE CONTRACTOR IS RESPONSIBLE FOR CONFIRMING THE STATE OF THE EXISTING INFRASTRUCTURE THAT MAY HAVE AN IMPACT ON THE INSTALLATION OF NEW EQUIPMENT.

B.M. BRASS PLATE LOCATED IN GRADE BEAM OF ADMINISTRATION BUILDING ELEV. 234.059	CH2MHILL. SNC-LAWALIN	ENGINEER'S SEAL M. MIKOLAYENKO Member 24688 July 06/2017
DESIGNED BY: EMS	CHECKED BY: BJM	
DRAWN BY: DMW	APPROVED BY: BJM	
SCALE: AS NOTED	RELEASED FOR CONSTRUCTION	
DATE: 15/12/15	DATE: 2017/04/05	
BY: J. SHUMKA		
CONSULTANT NO.: 13-0338-002		

01 ISSUED FOR ADDENDUM 4 - 976-2016	2017/07/06	EMS	BJM
00 ISSUED FOR CONSTRUCTION - 976-2016	2017/04/05	EMS	BJM
NO. REVISIONS	DATE	DESIGN	CHECK

APEGN
 Certificate of Authorization
 KGS Group
 No. 245

THE CITY OF WINNIPEG
 WATER AND WASTE DEPARTMENT

SOUTH END WATER POLLUTION CONTROL CENTRE
 SEWPCC UPGRADE/EXPANSION PROJECT
 CIVIL
 SURFACE GRADING PLAN
 SECONDARY CLARIFIERS

CITY DRAWING NUMBER	SHEET	REV.	SIZE
1-0102-CGAD-A003	010	01	A1