

SPECIFIC NOTES:

- 1 PROVIDE 1 PR, 18 AWG, CIC, TWISTED PAIR, SHIELDED CABLE. SHIELD CONNECTED TO GROUND ON ONE END.
- 2 PROVIDE BENDER CURRENT TRANSFORMER CT-M70 (PRODUCT NO. B 911 777) AT NEUTRAL GROUNDING RESISTOR.
- 3 PROVIDE BENDER COUPLING DEVICE CD1000 (PRODUCT NO. B 9803 9010) FOR MEASUREMENT ACROSS NEUTRAL GROUNDING RESISTOR. NEUTRAL LEAD OF COUPLING DEVICE SHALL RUN THROUGH NEUTRAL GROUNDING CURRENT TRANSFORMER AS SHOWN.
- 4 PROVIDE 1 PR, 16 AWG, CIC, TWISTED PAIR, SHIELDED CABLE. SHIELD CONNECTED TO GROUND ON ONE END. REFER TO CONDUIT SCHEDULE ON EWDG-G002-001.
- 5 REFER TO ECBD-G008 FOR EDP-G755 PANEL LAYOUT.
- 6 A MORE DETAILED CONNECTION DIAGRAM OF THE 120 VAC POWER WIRING IS SHOWN ON ECBD-G008 (EDP-G755).
- 7 ACTIVATE INTERNAL TERMINATING RESISTOR ON RLY-R755-3 AND REMOTE ALARM INDICATOR BENDER MK800AF-11. TERMINATING RESISTOR ON OTHER DEVICES SHALL BE DEACTIVATED. TERMINATING RESISTORS ARE ACTIVATED ON THE TWO ENDS DEVICES OF THE RS-485 NETWORK. ENSURE SEQUENCE OF CONNECTIONS ARE AS SHOWN ON DRAWING.
- 8 SET FAULT MEMORY SETTING TO "ON" ON RESIDUAL CURRENT MONITORS TO ENSURE FAULT ALARM REMAINS UNTIL RESET.
- 9 CONNECT NORMALLY OPEN CONTACT TO MCC-G750 MAIN BREAKER SHUNT TRIP CIRCUIT TO TRIP MAIN BREAKER IN THE EVENT OF A GROUND FAULT AT THE MAIN SUPPLY. APPLY DELAY SETTING OF 2 SECONDS. REFER TO CONDUIT SCHEDULE ON EWDG-G002-001.

REFER TO WIRING DRAWING ON EWDG-G002 FOR DETAILED WIRING OF RESIDUAL CURRENT MONITORS AND GROUND FAULT CURRENT TRANSFORMERS.
REFER TO ESLD-C001, ESLD-G004 AND ESLD-G005 FOR SINGLE LINE DIAGRAM.

GROUND FAULT DETECTION PANEL EDP-G755

GENERAL NOTES:

1. VIEW DATASHEETS OF EACH BENDER DEVICE FOR COMPLETE DETAIL ON ALL EQUIPMENT.
2. ALL CONTROL CABLING SHALL BE EITHER ARMORED CONTROL & INSTRUMENTATION CABLE OR NON-ARMORED CABLE RUN IN CONDUIT.
3. TEST ALL WIRING AND COMPONENTS FOR FUNCTIONAL OPERATION, CORRECT CONNECTION AND CONTINUITY.



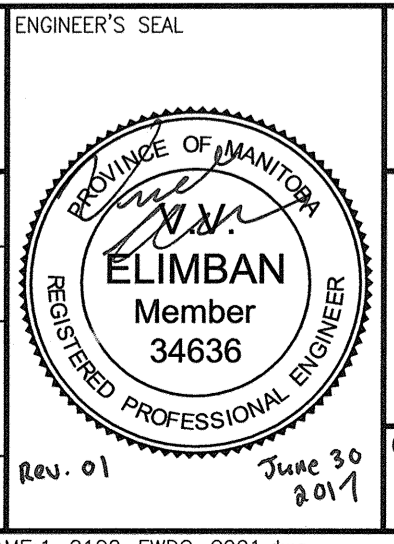
NO.	REVISIONS	DATE	DESIGN	CHECK
01	ISSUED FOR ADDENDUM 4 - 976-2016	2017/06/30	VVE	DEB
00	ISSUED FOR CONSTRUCTION - 976-2016	2017/04/05	VVE	DEB

CH2MHILL
SNC-LAVALIN

DESIGNED BY: V. ELIMBAN
DRAWN BY: M.J. PERSSON
SCALE: NTS

CHECKED BY: E. RYCZKOWSKI
APPROVED BY: D. BECKER
ISSUED FOR CONSTRUCTION BY: J. SHUMKA
DATE: 2017/04/05

DATE: 2015/07/28
CONSULTANT NO.: 474248



THE CITY OF WINNIPEG
WATER AND WASTE DEPARTMENT

SOUTH END WATER POLLUTION CONTROL CENTRE
SEWPCC UPGRADING/EXPANSION PROJECT
ELECTRICAL - WIRING DIAGRAM
HEADWORKS AREA - GRIT AND SCREENINGS BUILDING
GROUND DETECTION WIRING DIAGRAM EDP-G755

CITY DRAWING NUMBER: 1-0102-EWDG-G001
SHEET: 001
REV: 01
SIZE: A1

REFERENCE DRAWINGS	DESCRIPTION
1-0102-EWDG-G002	GROUND FAULT DETECTION MCC-G750 & MCC-G770
1-0102-ECBD-G008	PANEL LAYOUT, GRIT & SCREENINGS BUILDING, EDP-G755