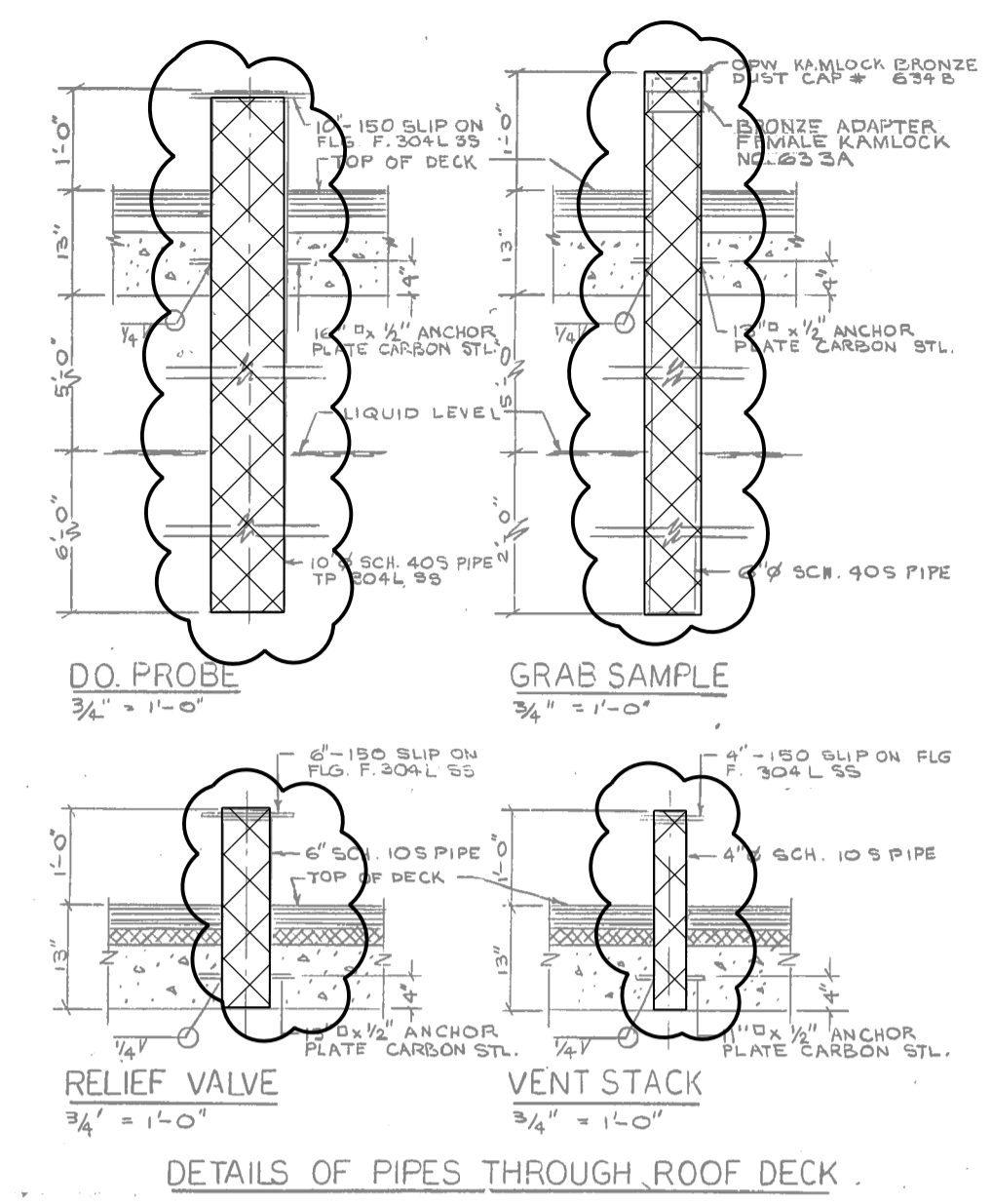
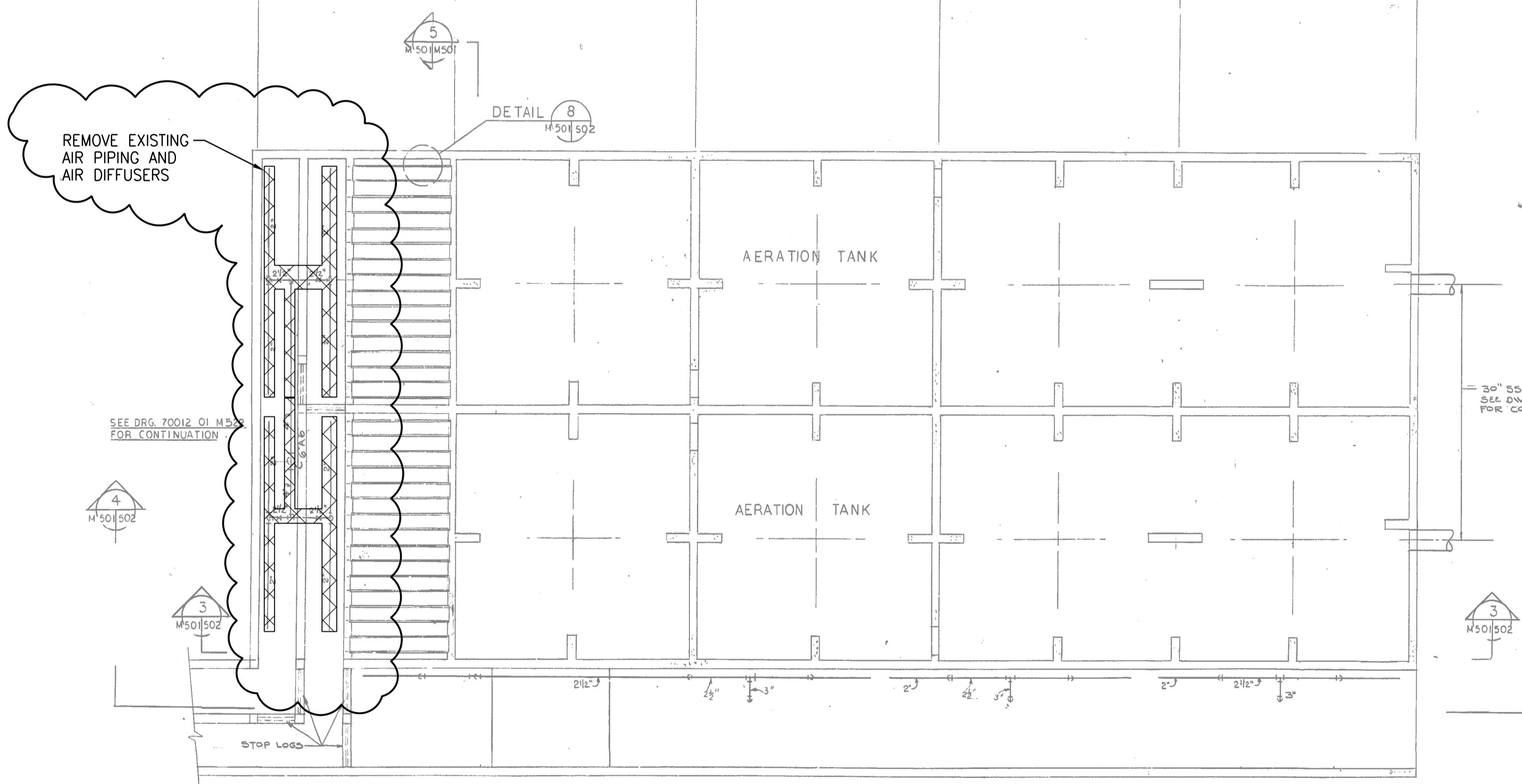


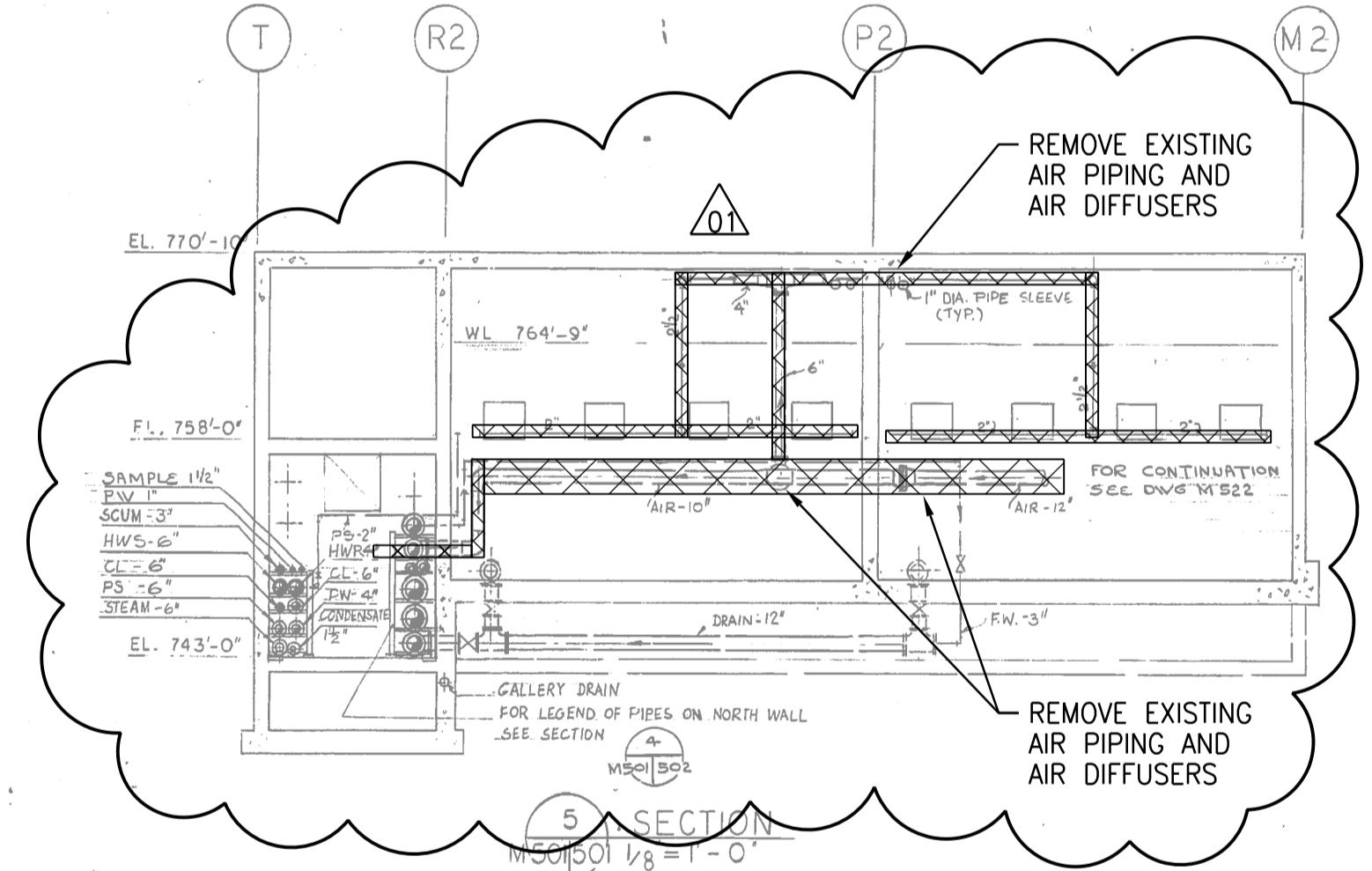
1 PLAN AT ELEVATION 770'-10"
M501502 1/8" = 1'-0"



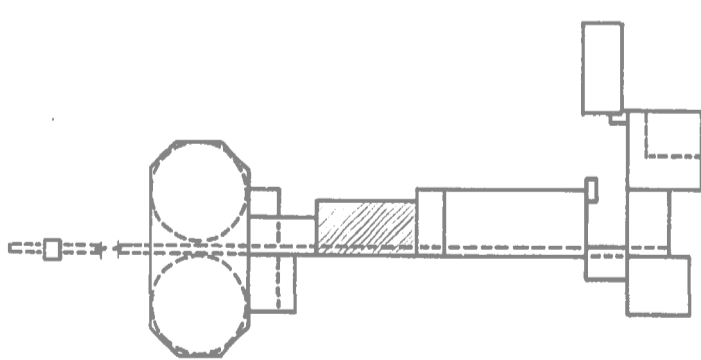
DETAILS OF PIPES THROUGH ROOF DECK



2 PLAN AT ELEVATION 758'-0"
M501502 1/8" = 1'-0"



5 SECTION
M501502 1/8" = 1'-0"



KEY PLAN
1" = 150'

NOTES:
1. REFER TO GENERAL DEMOLITION NOTES DRAWING 1-0102-DAAM-AD01.

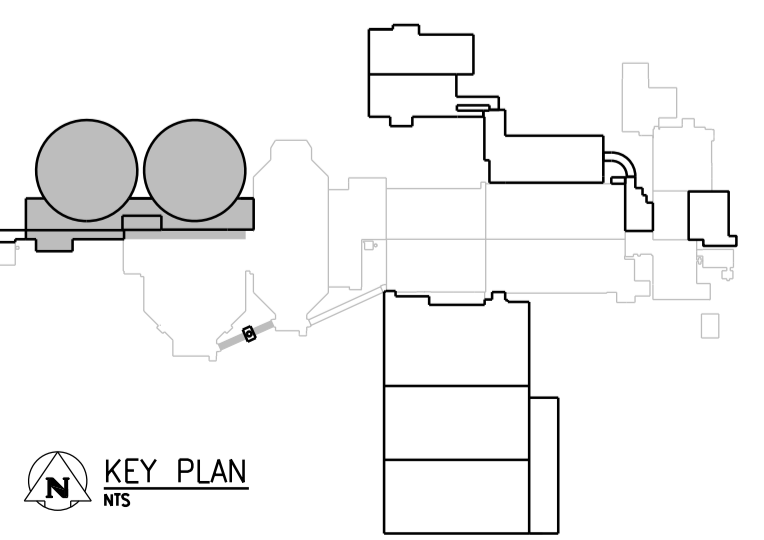
SEALING ARCHITECT OR ENGINEER ACCEPTS RESPONSIBILITY ONLY FOR AREAS IDENTIFIED BY CLOUDING ON THIS DRAWING.

NOTE: THIS DRAWING SUPERSEDES DRAWING SEP-69

THE CITY OF WINNIPEG
Winnipeg WATER AND WASTE DEPARTMENT

SOUTH END WATER POLLUTION CONTROL CENTRE
SEWPCU UPGRADING/EXPANSION PROJECT
PROCESS
UNOX & SLUDGE THICKENING
SECONDARY PUMP GALLERY - SECTIONS

CITY DRAWING NUMBER 1-0102-PGAD-DD50 SHEET REV. SIZE 001 01 A1



KEY PLAN
NTS

APEGM
Certificate of Authorization
CH2M HILL Canada Ltd.
No. 1441

NO.	REVISIONS	DATE	DESIGN	CHECK
01	ISSUED FOR ADDENDUM 4 - 976-2016	2017/06/30	B.C.	J.C.
00	ISSUED FOR CONSTRUCTION - 976-2016	2017/04/05	B.C.	J.C.

CH2MHILL		ENGINEER'S SEAL	
SNC-LAVALIN		KCS GROUP CONSULTING ENGINEERS	
DESIGNED BY: X.X.	CHECKED BY: F. ABSI		
DRAWN BY: B. COOPER	APPROVED BY: H.T. FREIHAMMER		
SCALE: NTS	ISSUED FOR CONSTRUCTION BY: J. SHUMKA		
DATE: 2017/04/05		DATE: 2017/04/05	
CONSULTANT NO.: 474248			