

GROUND FLOOR PLAN
1 : 100

DESIGN INTENT NOTES	
1	FAS-S-143-D01 AND FAS-S-B43-D01 (SMOKE DETECTOR DIRECTLY BELOW IN LOADING AREA A) ARE INTENDED TO CLOSE THE HORIZONTAL FIRE SHUTTER U-S523 IN THE EVENT OF A FIRE. CONTROL RELAY FAS-S-143-C01 FEEDS THE DOOR ACTUATOR OF THE FIRE SHUTTER. PROVIDE FIRE ALARM CONTROL CLOSING OF FIRE SHUTTER DOOR. PROVIDE APPROPRIATE POWER CIRCUIT/VOLTAGE AS PER EQUIPMENT MANUFACTURER RECOMMENDATIONS.
2	FAS-S-144-D01 AND FAS-S-130-D01 ARE INTENDED TO ACTIVATE DOOR RELEASE FAS-S-144-R01 AND FAS-S-144-R02 IN THE EVENT OF A FIRE.
3	FAS-U-203-D01 (ON DWG. EFAS-U001) AND FAS-S-144-D02 ARE INTENDED TO ACTIVATE DOOR RELEASE FAS-S-144-R03 AND FAS-S-144-R04 IN THE EVENT OF A FIRE.

GENERAL NOTES:

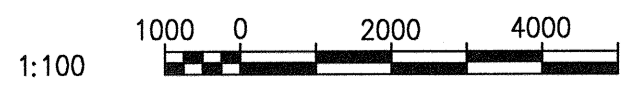
- REFER TO DRAWING 1-0102-EFAS-S001-001 FOR FIRE ALARM GENERAL NOTES.

SPECIFIC NOTES:

- MAGNETIC DOOR HOLDERS REQUIRE 120 VAC POWER. REFER TO DWG. 1-0102-EGAD-S004 FOR PANEL AND CIRCUIT NUMBER UTILIZED.
- RELOCATE EXISTING MANUAL PULL STATION FAS-S-130-P01 ADJACENT TO NEW EXIT STAIRWELL DOOR AS EXISTING LOCATION IS NO LONGER AN EXIT. MANUAL PULL STATION WILL REMAIN IN EXISTING FIRE ALARM CIRCUIT (REFER TO 1-0102S-E0009). EXTEND CONDUIT AND CABLE AS REQUIRED.
- FIRE ALARM SYSTEM TO PROVIDE AUTOMATIC CLOSURE OF HORIZONTAL FIRE SHUTTER U-S523. WIRE AND CONNECT FIRE SHUTTER TO FIRE ALARM N.C AUXILIARY RELAY CONTACT. RELAY CONTACT TO BE PROGRAMMED TO OPERATE ONLY WITH THE ACTIVATION OF EITHER SMOKE DETECTOR ADJACENT TO THE DOORS.

LAST SWE: 2017/07/13 - 8:07am
 PATH: C:\p_w\work\ch2mhill\wsg\veo06717\403566519\1-0102-EFAS-S002.dwg

REFERENCE DRAWINGS	DESCRIPTION
1-0102-EHLC-S003	HAZARDOUS LOCATION, SECONDARY CLARIFIERS 4 AND 5, GROUND FLOOR PLAN
1-0102-EFAS-U001	FIRE ALARM LAYOUT, GROUND FLOOR PLAN
1-0102-EGAD-S004	POWER LAYOUT, GROUND FLOOR PLAN
1-0102-EFAS-S004	FIRE ALARM, RISER DIAGRAM, NOTIFICATION CIRCUITS
1-0102-EFAS-S003	FIRE ALARM, RISER DIAGRAM, DETECTION CIRCUITS
1-0102-EFAS-A001	FIRE ALARM UPGRADES, LEGENDS AND DETAILS



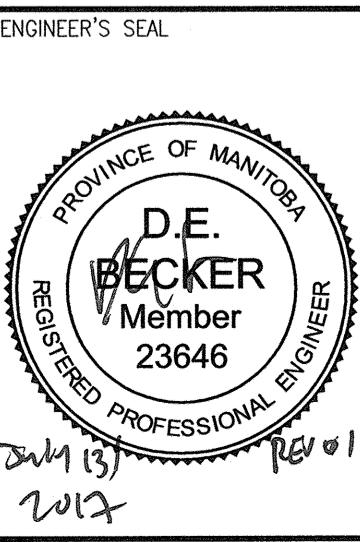
NO.	REVISIONS	DATE	DESIGN CHECK
01	ISSUED FOR ADDENDUM 5 - 976-2016	2017/07/14	DEB DEB
00	ISSUED FOR CONSTRUCTION - 976-2016	2017/04/05	WVE DEB

CH2MHILL.
SNC-LAVALIN

DESIGNED BY: V. ELIMBAN
DRAWN BY: M.J. PERSSON
SCALE: 1:100

CHECKED BY: E. RYCZKOWSKI
APPROVED BY: D. BECKER
ISSUED FOR CONSTRUCTION BY: J. SHUMKA
DATE: 2015/10/22
DATE: 2017/04/05

CONSULTANT NO.: 474248



THE CITY OF WINNIPEG
WATER AND WASTE DEPARTMENT

SOUTH END WATER POLLUTION CONTROL CENTRE
SEWPCC UPGRADING/EXPANSION PROJECT
ELECTRICAL - FIRE ALARM LAYOUT
SECONDARY CLARIFIERS 4 AND 5
GROUND FLOOR PLAN

CITY DRAWING NUMBER: 1-0102-EFAS-S002
SHEET: 001
REV: 01
SIZE: A1