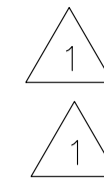


MAIN FLOOR PLAN
SCALE: 1/8"=1'-0"

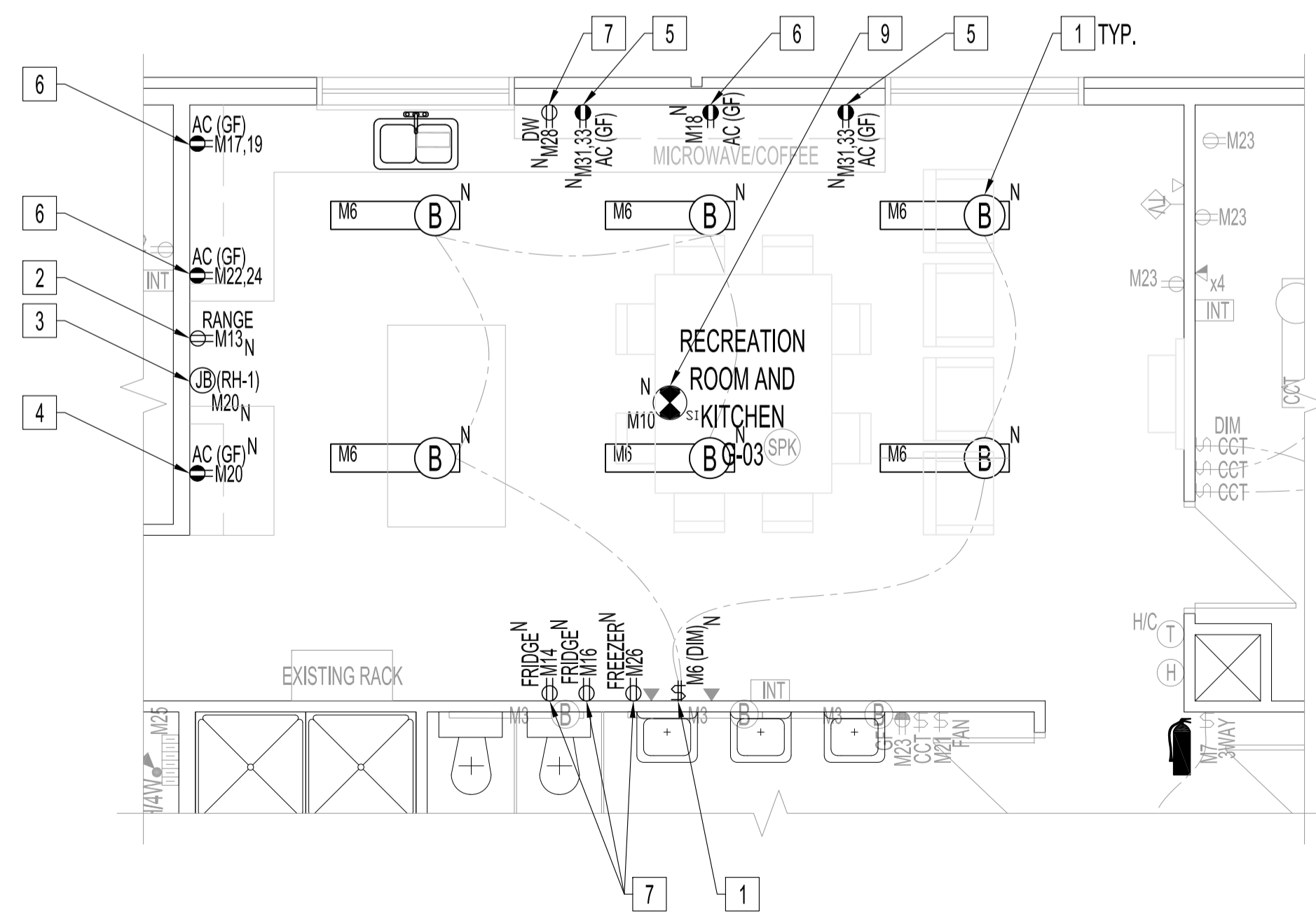
ELECTRICAL POWER & SYSTEMS

DEMOLITION NOTES: "X" ALSO SEE NOTES & SPECIFICATIONS.

1. REPLACE TYPE "A" LUMINAIRES & LIGHT SWITCHES IN RECKITCHEN, G-03. SEE RENOVATION NOTES.
2. REMOVE RECEPTACLE & CIRCUIT BACK TO PANEL.
3. RELOCATE RECEPTACLE & CIRCUIT, SEE RENOVATION NOTES.
4. REMOVE RECEPTACLE & CIRCUIT BACK TO JB OR DEVICE BOX.
5. REMOVE DRINKING FOUNTAIN CIRCUIT & REUSE CIRCUIT FOR RANGE.



NOTES:
REFER TO DRAWING E1, NOTES.

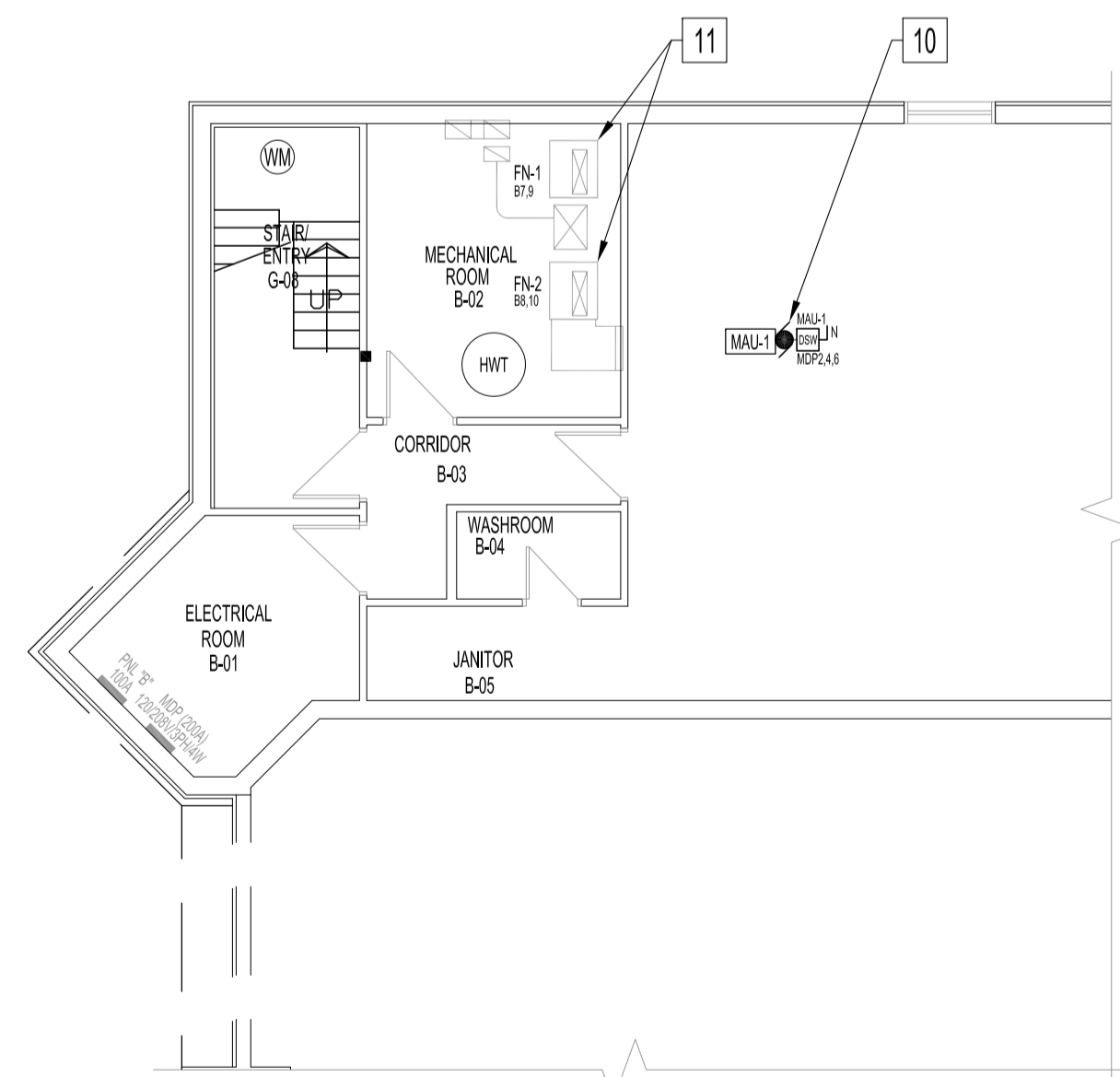


RENOVATION - PARTIAL MAIN FLOOR PLAN
SCALE: 1/4"=1'-0"

ELECTRICAL POWER & SYSTEMS

RENOVATION NOTES: "X"

- ALSO SEE NOTES & SPECIFICATIONS.
ALL WIRING & CABLING IN CEILING SPACE SHALL BE IN EMT OR AC90 AS PER LATEST CEC. COORDINATE ALL RECEPTACLE OPENINGS WITH STAINLESS STEEL CABINET MANUFACTURER.
1. REPLACE LUMINAIRES & LIGHT SWITCHES IN RECKITCHEN WITH TYPE SHOWN. WIRE TO NEW 2-GANG DIMMER SWITCH WITH 0-10V CONTROL.
 2. PROVIDE DEDICATED IN-WALL RANGE RECEPTACLE, 120V, 15A CIRCUIT, #12/2 RW90 IN EMT TO 15A-1P BREAKER. MOUNT HEIGHT TO ALLOW RANGE INSTALLATION.
 3. PROVIDE IN-WALL JUNCTION BOX & CONNECT BEHIND RANGE HOOD EXHAUST FAN, (RH-1) SEE MECHANICAL DRAWING, TO EXISTING CIRCUIT SHOWN.
 4. RELOCATE EXISTING MW RECEPTACLE CIRCUIT TO AC IN-WALL AS SHOWN. CHANGE TO GFCI RECEPTACLE.
 5. PROVIDE AC IN-WALL SPLIT-CIRCUIT RECEPTACLE, 120V, 15A CIRCUITS, #12/2 RW90 BX TO 15A-1P BREAKERS.
 6. REPLACE WITH GFCI 15A DUPLEX RECEPTACLE.
 7. PROVIDE DEDICATED APPLIANCE IN-WALL RECEPTABLES & CIRCUITS SHOWN, 120V, 15A CIRCUIT, #12/2 RW90 IN EMT TO 15A-1P BREAKER. CONFIRM LOCATIONS WITH CONTRACT ADMINISTRATOR.
 8. REPLACE EXISTING ELECTRIC BASEBOARD HEATER WITH NEW, SEE SPEC.
 9. PROVIDE CEILING-MOUNTED SMOKE DETECTOR, 120V WITH BATTERY BACK-UP. WIRE TO ADJACENT EXISTING SMOKE ALARM CIRCUIT, M10.
 10. PROVIDE DISCONNECT SWITCH & 208V, 40A CIRCUIT, #8/4 RW90 IN EMT TO 40A-3P CIRCUIT BREAKER IN MDR. USE CURRENT SENSOR ON MAU-1 TO INTERLOCK, MAU-1, WITH RANGE HOOD, RH-1, AS PER MANUFACTURER INSTRUCTIONS.
 11. PROVIDE ELECTRICAL SERVICE FOR FURNACE REPLACEMENTS & REQUIRE WORK FOR NEW FURNACES, FN-1 & FN-2. SEE MECHANICAL DRAWINGS.
 12. PROVIDE ELECTRICAL SERVICE FOR CONDENSING UNIT REPLACEMENT & REQUIRE WORK FOR NEW CONDENSING UNITS, CU-1 & CU-2. SEE MECHANICAL DRAWINGS.



RENOVATION - PARTIAL BASEMENT FLOOR PLAN
SCALE: 1/8"=1'-0"

No.	REVISION/DESCRIPTION	BY	DATE
1	ISSUE FOR ADDENDUM 1: ADDED DEMO NOTE 4 & 5, FOR CLARITY ADDED "IN-WALL" TO RENO NOTES 2,3,4,5,7.	DTA	2017.12.04
0	ISSUE FOR CONSTRUCTION	DTA	2017.11.15



DRAWN	DTA	CHECKED	DESIGNED	DTA	APPROVED
DATE	2017.10.23	USER			APPROVAL

THE CITY OF WINNIPEG
PLANNING, PROPERTY AND
DEVELOPMENT DEPARTMENT
MUNICIPAL ACCOMMODATIONS DIVISION
3-65 GARRY STREET, R3C 4K4

PROJECT
WINNIPEG FIRE PARAMEDIC SERVICES
STATION No.2
INTERIOR RENOVATIONS
55 WATT STREET BID OPP: 1013-2017

SHEET TITLE
PARTIAL BASEMENT AND MAIN FLOOR PLANS
DEMOLITION AND RENOVATION
POWER AND SYSTEMS

SCALE	PROJECT No:	SHEET No:
AS SHOWN	2016-007	E2R1