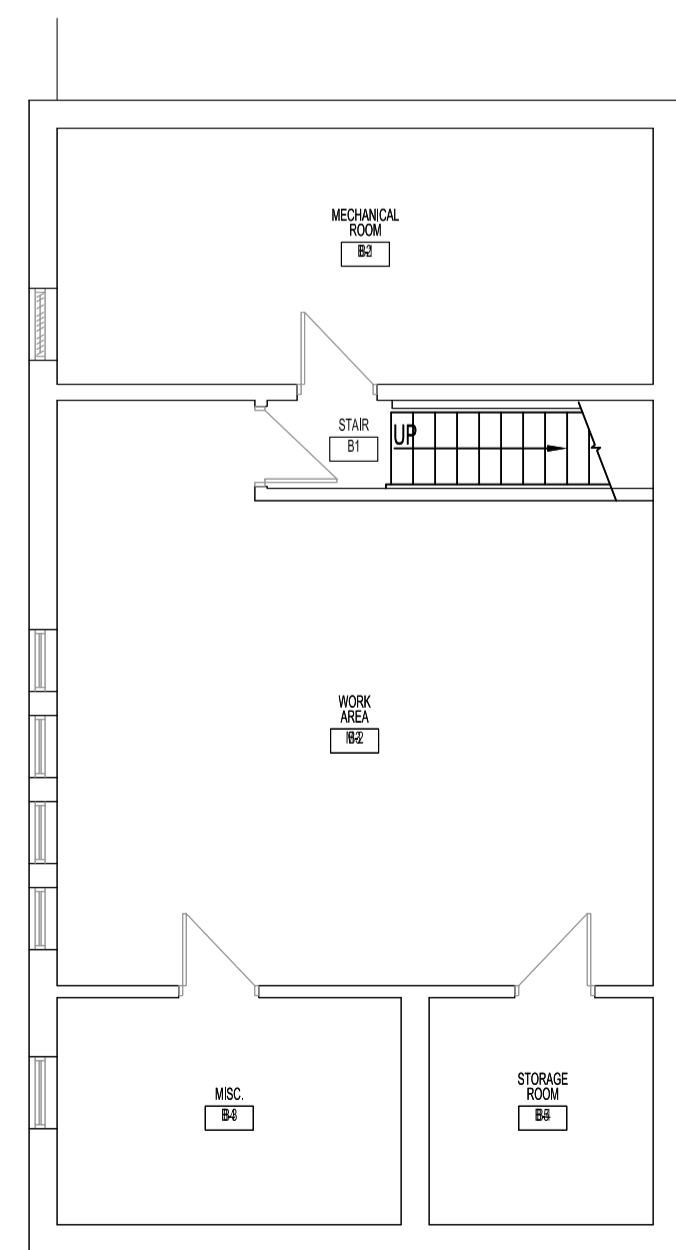


DEMOLITION - MAIN FLOOR PLAN
SCALE: 1/8"=1'-0"



BASEMENT FLOOR PLAN
SCALE: 1/8"=1'-0"

ELECTRICAL POWER & SYSTEMS

DEMOLITION NOTES: "X"

ALSO SEE NOTES & SPECIFICATIONS.

1. REPLACE TYPE "A" LUMINAIRES & LIGHT SWITCHES IN KITCHEN & LOUNGE/DINING. SEE RENOVATION NOTES.
2. RELOCATE DW CIRCUIT. SEE RENOVATION NOTE.
3. RELOCATE RECEPTACLE & CIRCUIT BACK TO NEW MW RECEPTACLE.
4. REMOVE RANGE RECEPTACLE & CIRCUIT BACK TO PANEL.
5. RELOCATE RECEPTACLE & CIRCUIT. SEE RENOVATION NOTES.
6. RELOCATE SWITCH.

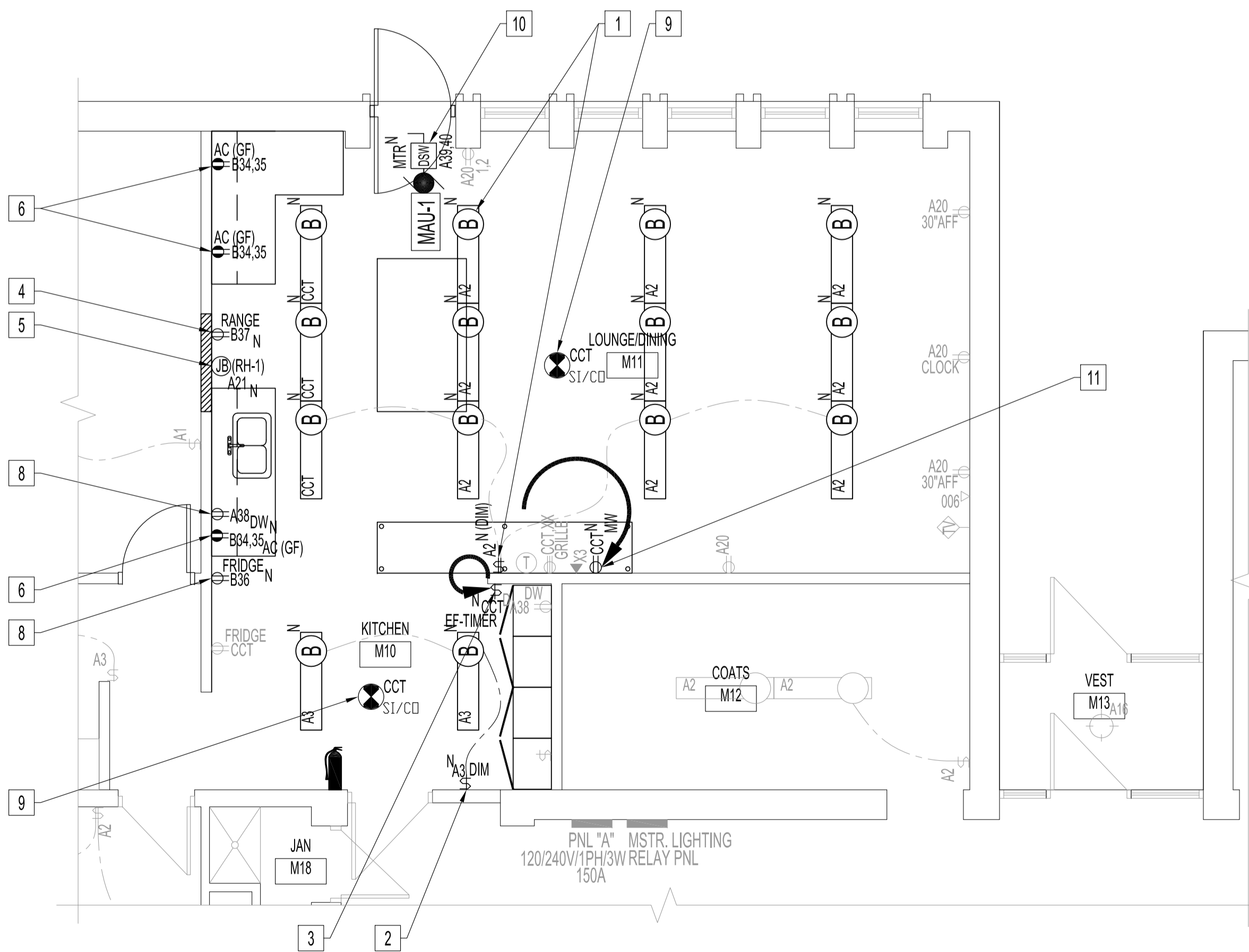
ELECTRICAL POWER & SYSTEMS

RENOVATION NOTES: "X"

ALSO SEE NOTES & SPECIFICATIONS.

ALL WIRING & CABLING IN CEILING SPACE SHALL BE IN EMT OR AC80 AS PER LATEST CEC. COORDINATE ALL RECEPTACLE OPENINGS WITH STAINLESS STEEL CABINET MANUFACTURER.

1. PROVIDE LUMINAIRES & LIGHT SWITCHES IN KITCHEN, LOUNGE/DINING WITH TYPE SHOWN. WIRE TO NEW 2-GANG DIMMER SWITCH WITH 0-10V CONTROL.
2. RELOCATED DEVICE BOX FOR NEW DIMMER SWITCH TO CLEAR NEW STORAGE UNITS. SEE ARCHITECTURAL DRAWINGS.
3. RELOCATE EXISTING EXHAUST TIMER SWITCH TO ADJACENT WALL WITH NEW WALL BOX. WIRING & BOX TO BE CONCEALED IN WALL.
4. PROVIDE DEDICATED RANGE RECEPTACLE. 120V, 15A CIRCUIT, #12/2 RW90 IN EMT TO 15A-1P BREAKER. MOUNT HEIGHT TO ALLOW RANGE INSTALLATION.
5. PROVIDE JUNCTION BOX BEHIND WIRE RANGE HOOD EXHAUST FAN, (RH-1) SEE MECHANICAL DRAWING, TO EXISTING CIRCUIT SHOWN.
6. PROVIDE AC SPLIT-CIRCUIT RECEPTACLE, 120V, 15A CIRCUITS, #12/2 RW90 IN EMT TO 15A-1P BREAKERS.
7. REPLACE WITH GFCI 15A DUPLEX RECEPTACLE.
8. PROVIDE DEDICATED APPLIANCE RECEPTACLES & CIRCUITS SHOWN. 120V, 15A CIRCUIT, #12/2 RW90 IN EMT TO 15A-1P BREAKER. CONFIRM LOCATIONS WITH CONTRACT ADMINISTRATOR.
9. PROVIDE CEILING-MOUNTED SMOKE/CO DETECTOR, 120V WITH BATTERY BACK-UP. WIRE TO AVAILABLE CIRCUIT.
10. PROVIDE DISCONNECT SWITCH & 240V, 50A CIRCUIT, #6/3 RW90 IN EMT TO 50A-2P CIRCUIT BREAKER. USE CURRENT SENSOR ON MAU-1 TO INTERLOCK. MAU-1, WITH RANGE HOOD, RH-1, AS PER MANUFACTURER INSTRUCTIONS. PROVIDE CEILING ACCESS HATCH FOR SERVICING.
11. RELOCATED RECEPTACLE FOR NEW MW.



RENOVATION - PARTIAL MAIN FLOOR AND REFLECTED CEILING PLAN
SCALE: 1/4"=1'-0"

NOTES:

REFER TO DRAWING E1, NOTES.

No.	REVISION/DESCRIPTION	BY	DATE
0	ISSUE FOR CONSTRUCTION	DTA	2017.11.15



DRAWN	DTA	CHECKED	DESIGNED	DTA	APPROVED
DATE	2017.10.23	USER	APPROVAL		

THE CITY OF WINNIPEG
PLANNING, PROPERTY AND
DEVELOPMENT DEPARTMENT
MUNICIPAL ACCOMMODATIONS DIVISION
3-65 GARRY STREET, R3C 4K4

PROJECT
WINNIPEG FIRE PARAMEDIC SERVICES
STATION No.16
INTERIOR RENOVATIONS
1001 MCGREGOR STREET BID OPP: 1013-2017

SHEET TITLE
BASEMENT AND MAIN FLOOR PLANS
DEMOLITION AND RENOVATION
POWER AND SYSTEMS

SCALE	PROJECT No:	SHEET No:
AS SHOWN	2016-009	E2