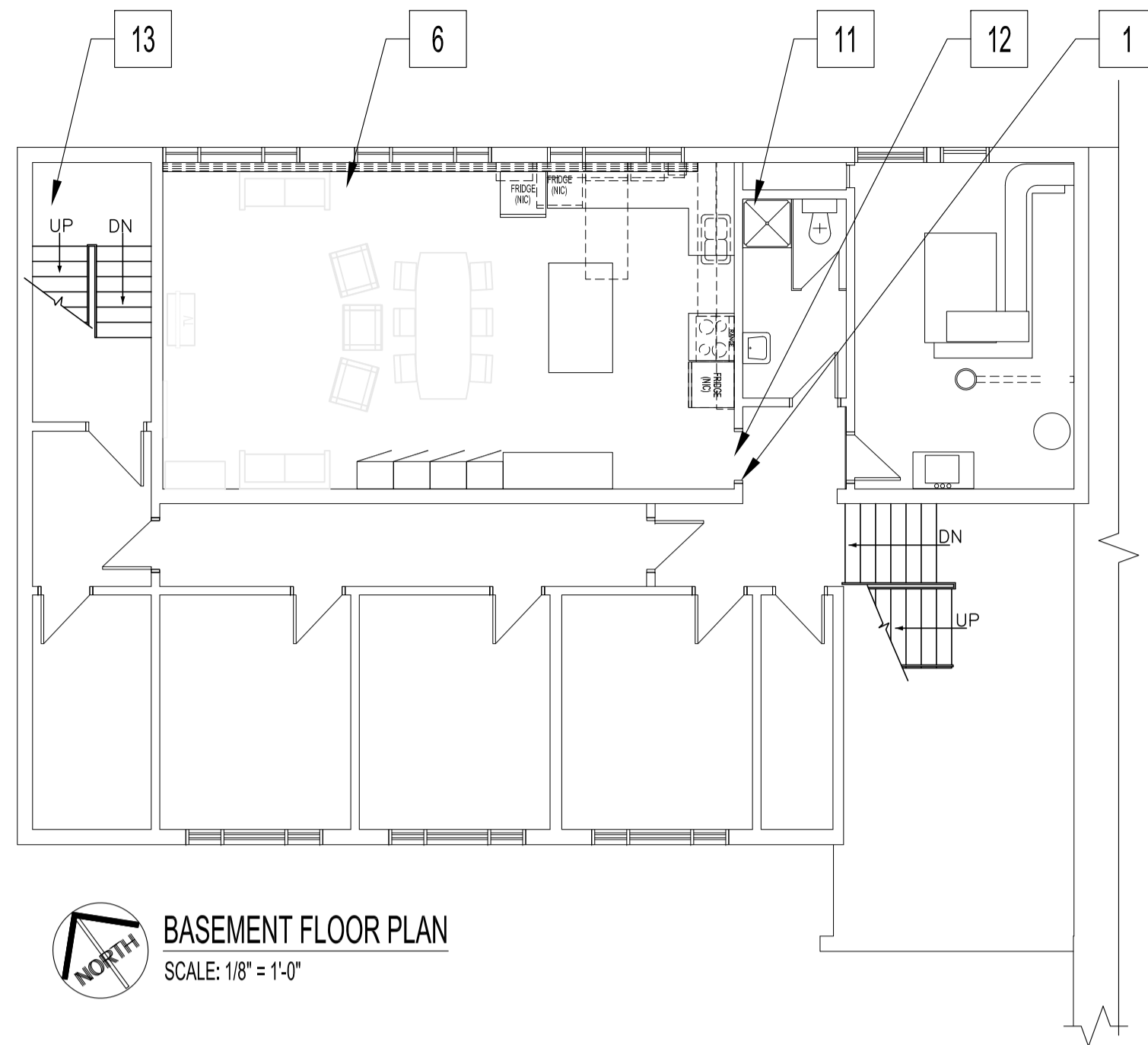
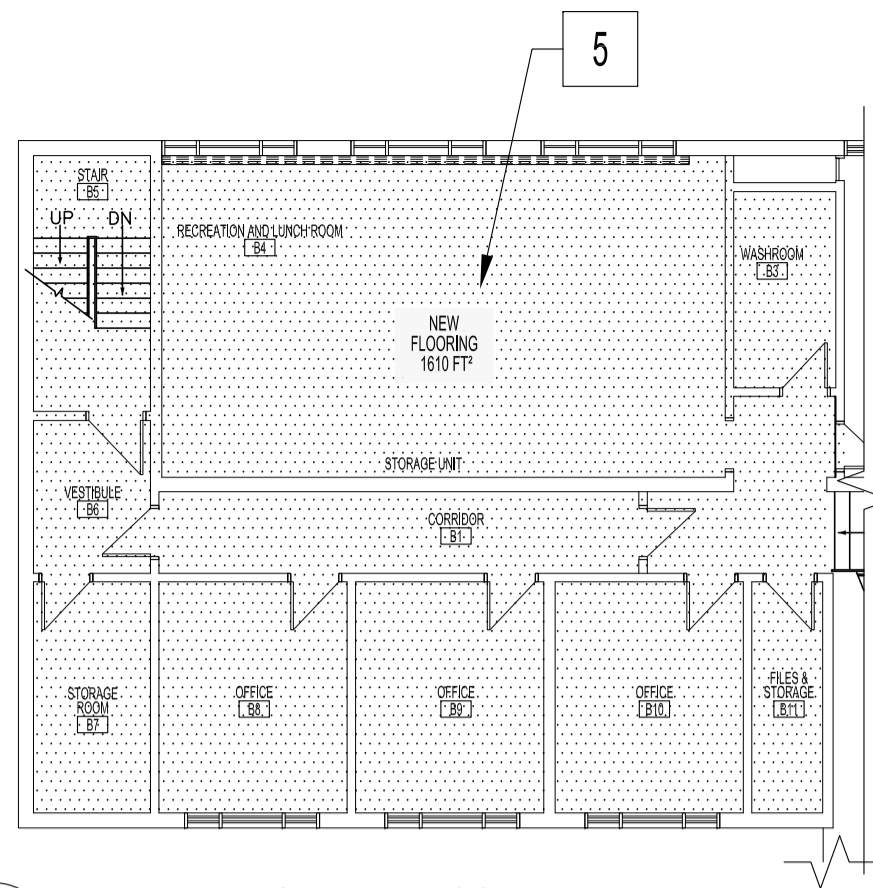


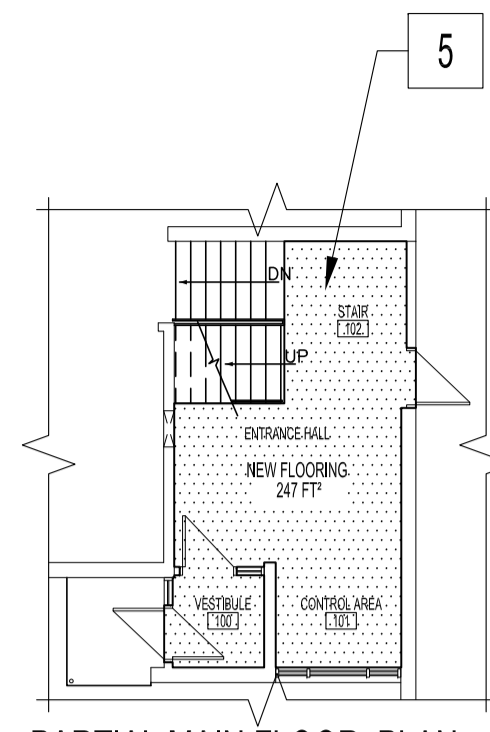
NOTES:



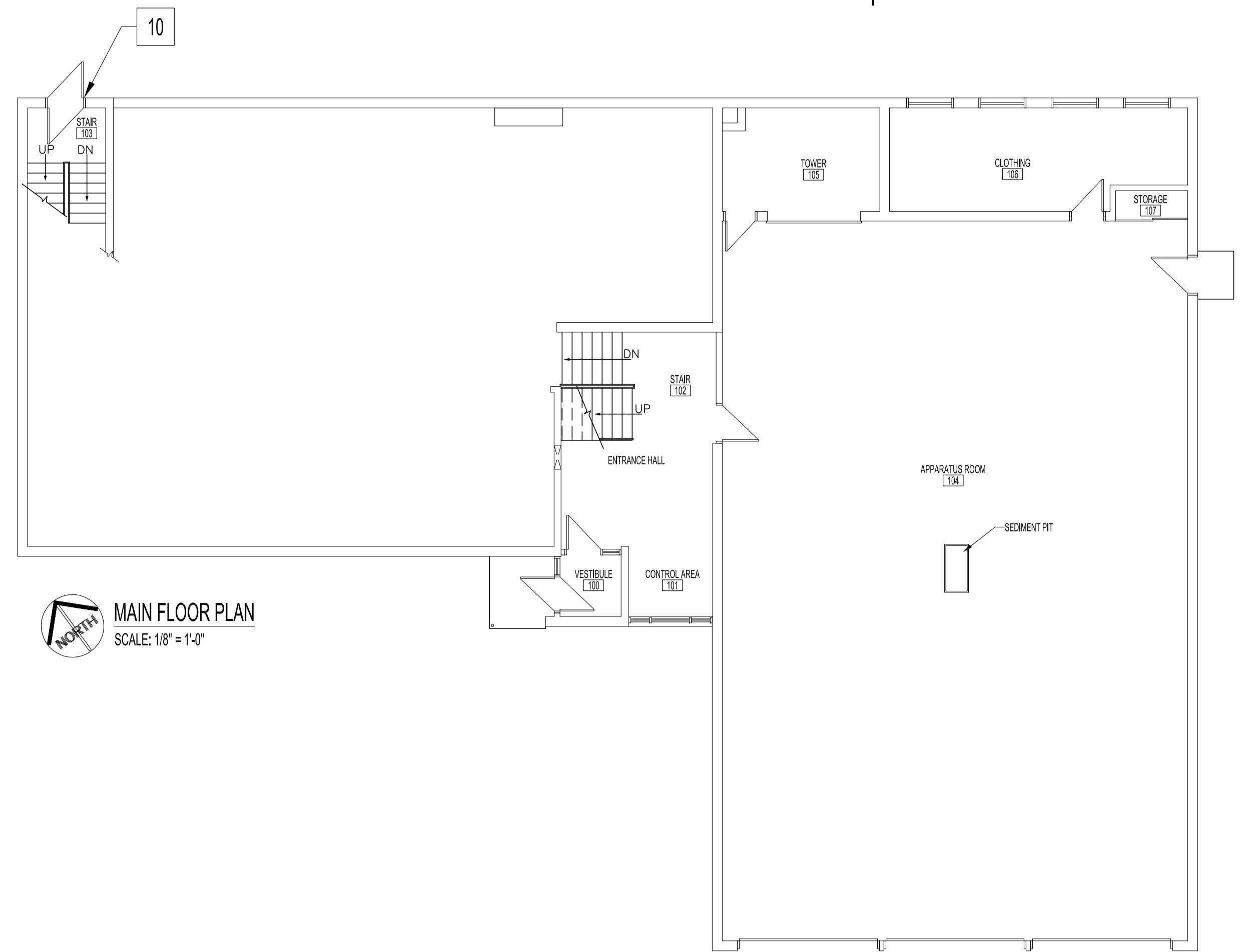
BASEMENT FLOOR PLAN
 SCALE: 1/8" = 1'-0"



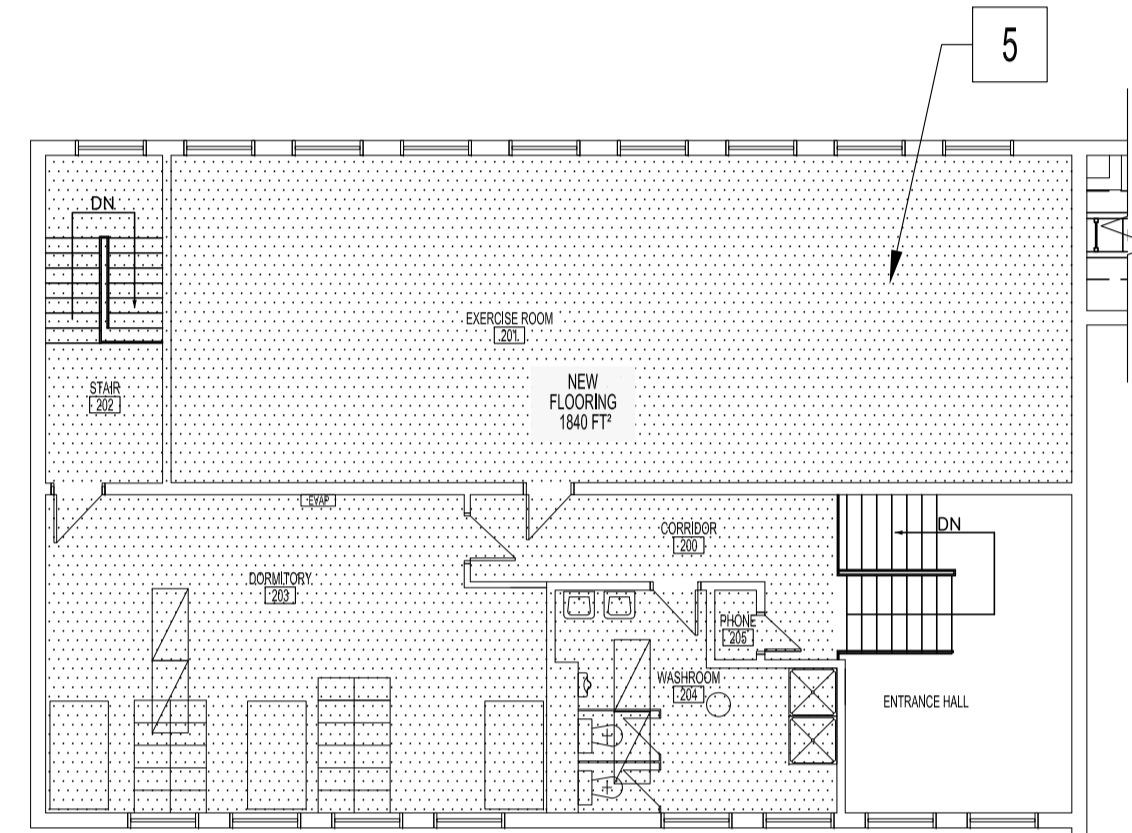
PARTIAL BASEMENT FLOOR PLAN
 NEW FLOOR FINISH PLAN - RESINOUS FLOORING
 SCALE: 3/32" = 1'-0"



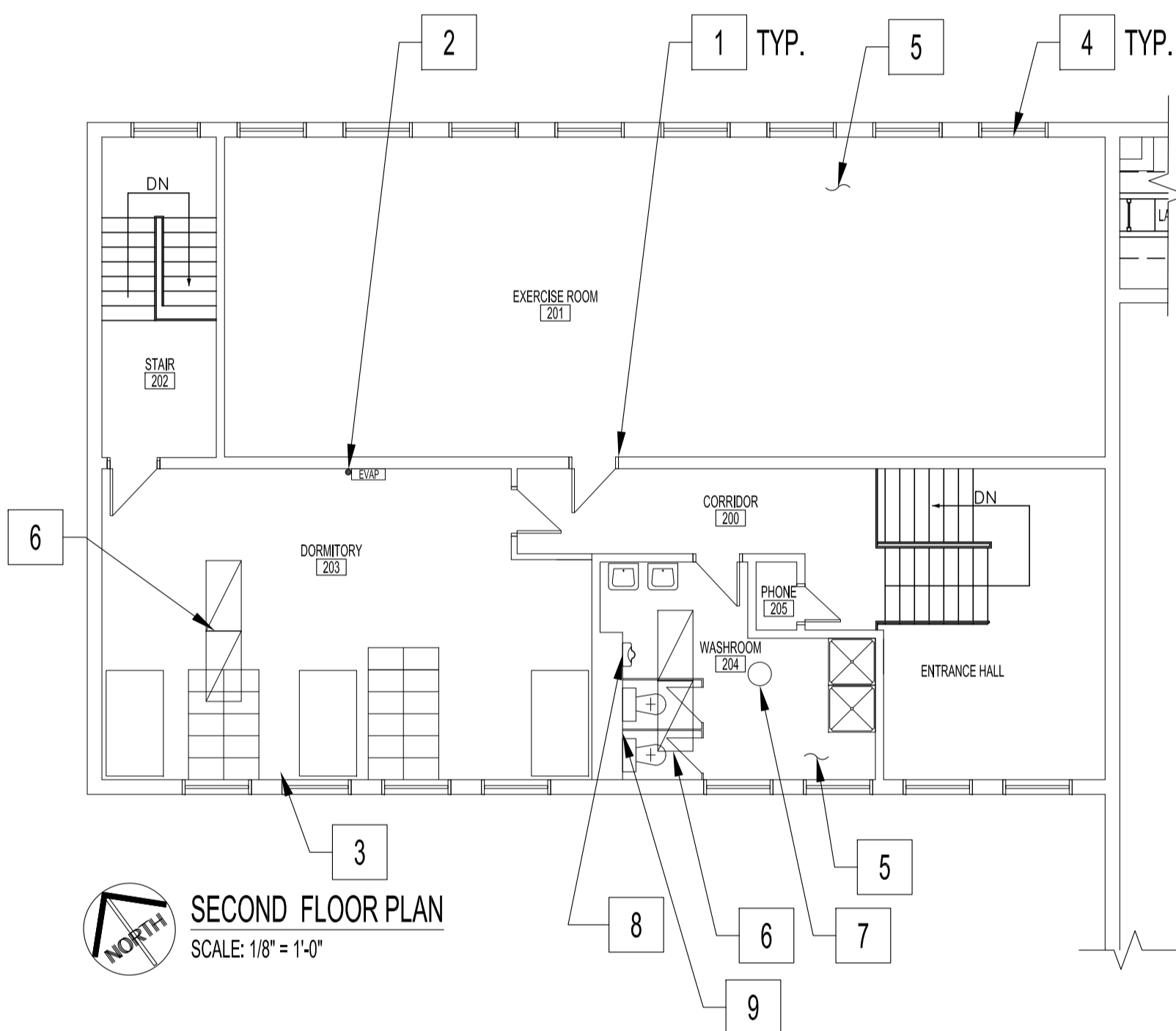
PARTIAL MAIN FLOOR PLAN
 NEW FLOOR FINISH PLAN - RESINOUS FLOORING
 SCALE: 3/32" = 1'-0"



MAIN FLOOR PLAN
 SCALE: 1/8" = 1'-0"



PARTIAL SECOND FLOOR PLAN - NEW FLOOR FINISH PLAN
 RESINOUS FLOORING
 SCALE: 3/32" = 1'-0"



SECOND FLOOR PLAN
 SCALE: 1/8" = 1'-0"

RENOVATION NOTES:
 DENOTES RENOVATION

ALSO SEE NOTES & SPECIFICATIONS.

- PATCH DAMAGED DOORS & FRAMES THEN PAINT DOORS (PT-2), DOOR FRAMES (PT-3).
- PROVIDE CEILING COVER OVER EVAPORATOR REFRIGERANT & POWER LINES WITH SIMILAR EXISTING MATERIAL, PATCH & PAINT TO MATCH EXISTING.
- MISSING CEILING TILES TO BE ADDED.
- PROVIDE ALL NEW BLINDS IN ROOM, SEE ROOM SCHEDULE.
- PROVIDE RESINOUS FLOORING & RUBBER BASE. SEE ROOM SCHEDULE AND SPEC. CITY OF WINNIPEG TO REMOVE EXISTING FLOOR TILES.
- REPLACE LUMINAIRES IN ROOM, SEE ELECTRICAL DRAWING.
- REFASTEN LOOSE CEILING & PAINT TO MATCH EXISTING.
- REHANG URINAL TO NEW HEIGHT, SEE MECHANICAL DRAWING.
- REPAIR WALL & PAINT ENTIRE WALL TO MATCH EXISTING, ADD 4" HIGH S/ST. BACKSPLASH BEHIND BOTH TOILET PARTITIONS AND RE-PAINT TOILET PARTITIONS.
- PAINT INNER EXTERIOR DOOR & PROVIDE NEW WEATHERSTRIPPING & THRESHOLDS FOR BOTH DOORS.
- REPLACE SHOWER & FIXTURES WITH FIBERGLASS UNIT MAAX ARUBA MODEL NO. 101102 WITH FULL GLASS PIVOT DOOR.
- MODIFY EXISTING WINDOW TO ACCOMMODATE MAU-1 FRESH AIR DUCT, PASS THRU & SUPPLY GRILLE ABOVE DOOR, SEE MECHANICAL DRAWING.
- PAINT STAIR TREADS. COLOUR TBD

ROOM AND DOOR FINISH SCHEDULE												
ROOM NO.	ROOM NAME	FLOOR	BASEBOARD	NORTH WALL	SOUTH WALL	EAST WALL	WEST WALL	CEILING	DOOR	DOOR TRIM	BLINDS	NOTES
B1	CORRIDOR	TYPE 2	R.BB. 2									
B2	MECHANICAL ROOM	TYPE 1	R.BB. 1									
B3	WASHROOM	TYPE 2	R.BB. 2						PT-1			
B4	RECREATION & LUNCH ROOM	TYPE 2	R.BB. 2	PT-1	PT-1	PT-1	PT-1	PT-1		PT-1	TBD	
B5	STAIRS	TYPE 2	R.BB. 2									
B6	VESTIBULE	TYPE 2	R.BB. 2									
B7	STORAGE ROOM	TYPE 2	R.BB. 2									
B8	OFFICE	TYPE 2	R.BB. 2									
B9	OFFICE	TYPE 2	R.BB. 2									
B10	OFFICE	TYPE 2	R.BB. 2									
B11	FILES & STORAGE	TYPE 2	R.BB. 2									
100	VESTIBULE	TYPE 2	R.BB. 2									
101	CONTROL AREA	TYPE 2	R.BB. 2									
102	STAIRS	TYPE 2	R.BB. 2									
103	STAIRS	TYPE 2	R.BB. 2						PT-1			
104	APPARATUS	EXIST	R.BB. 1									
105	TOWER	EXIST	R.BB. 1									
106	CLOTHING	EXIST	R.BB. 1									
107	STORAGE	EXIST	R.BB. 1									
200	CORRIDOR	TYPE 2	R.BB. 2									
201	EXERCISE ROOM	TYPE 2	R.BB. 2						PT-1		TBD	
202	STAIRS	TYPE 2	R.BB. 2									
203	DORMITORY	TYPE 2	R.BB. 2								TBD	
204	WASHROOM	TYPE 2	R.BB. 2						PT-2		TBD	
205	PHONE	TYPE 2	R.BB. 2									

ARCHITECTURAL	
SHEET No:	SHEET TITLE
A1	BASEMENT, MAIN AND SECOND FLOOR PLANS: RENOVATION NOTES AND SCHEDULES
A2	CABINET, MILLWORK: ELEVATIONS, SECTIONS AND DETAILS
A3	SECTIONS, DETAILS AND SPECIFICATIONS

No.	REVISION/DESCRIPTION	BY	DATE
0	ISSUE FOR CONSTRUCTION	JKR/DTA	2017.11.15



DATE	CHECKED	DESIGNED	APPROVED
2017.11.15	USER		

THE CITY OF WINNIPEG
 PLANNING, PROPERTY AND
 DEVELOPMENT DEPARTMENT
 MUNICIPAL ACCOMMODATIONS DIVISION
 3-65 GARRY STREET, R3C 4K4

PROJECT
 WINNIPEG FIRE PARAMEDIC SERVICES
 STATION No. 17
 INTERIOR RENOVATIONS
 1501 CHURCH AVENUE
 BID OPP: 1013-2017

SHEET TITLE
 BASEMENT, MAIN & SECOND FLOOR PLANS
 RENOVATION NOTES AND SCHEDULES

SCALE	PROJECT No:	SHEET No:
AS SHOWN	2017-110	A1