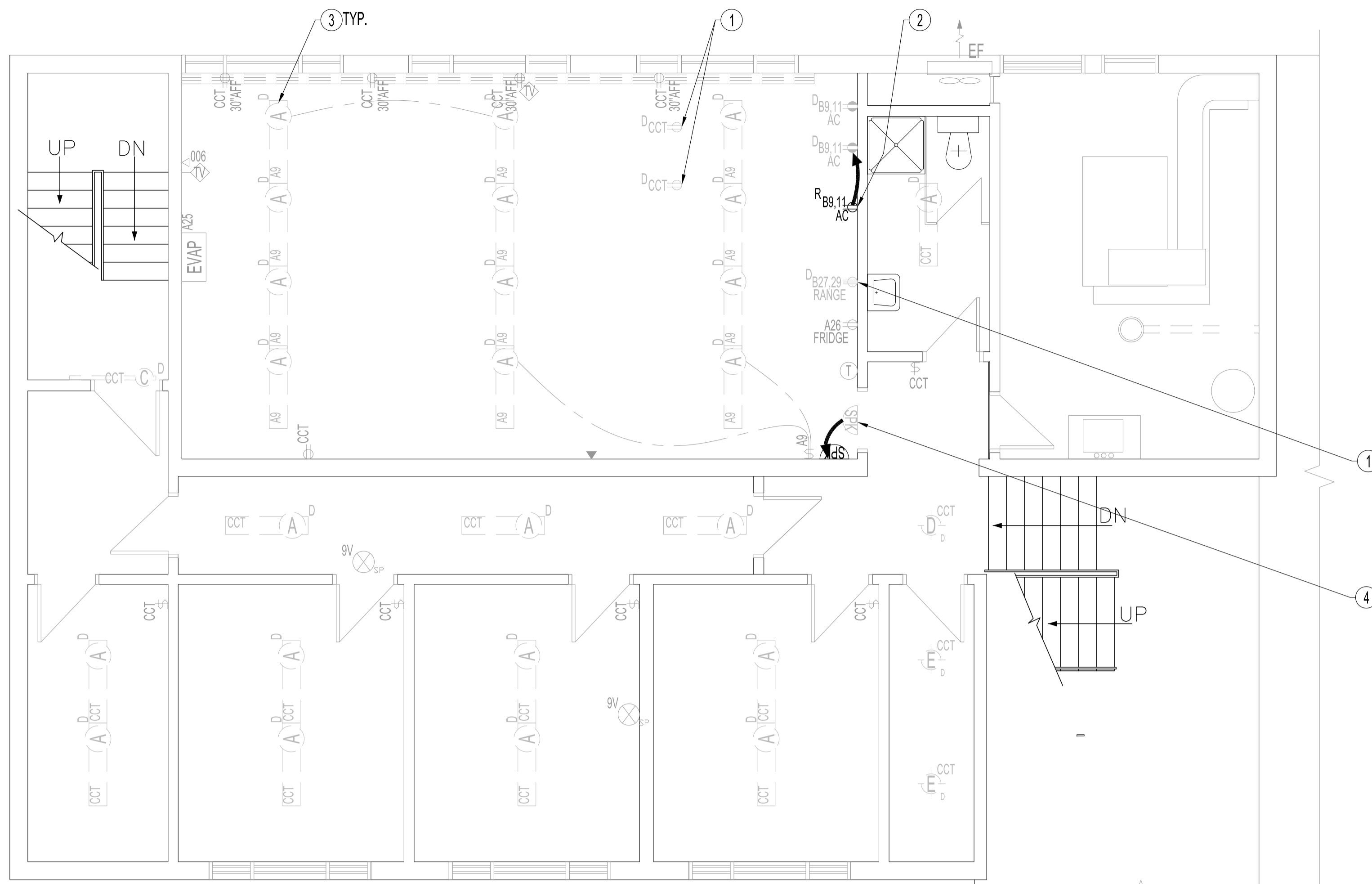


NOTES:
REFER TO DRAWING E1, NOTES.



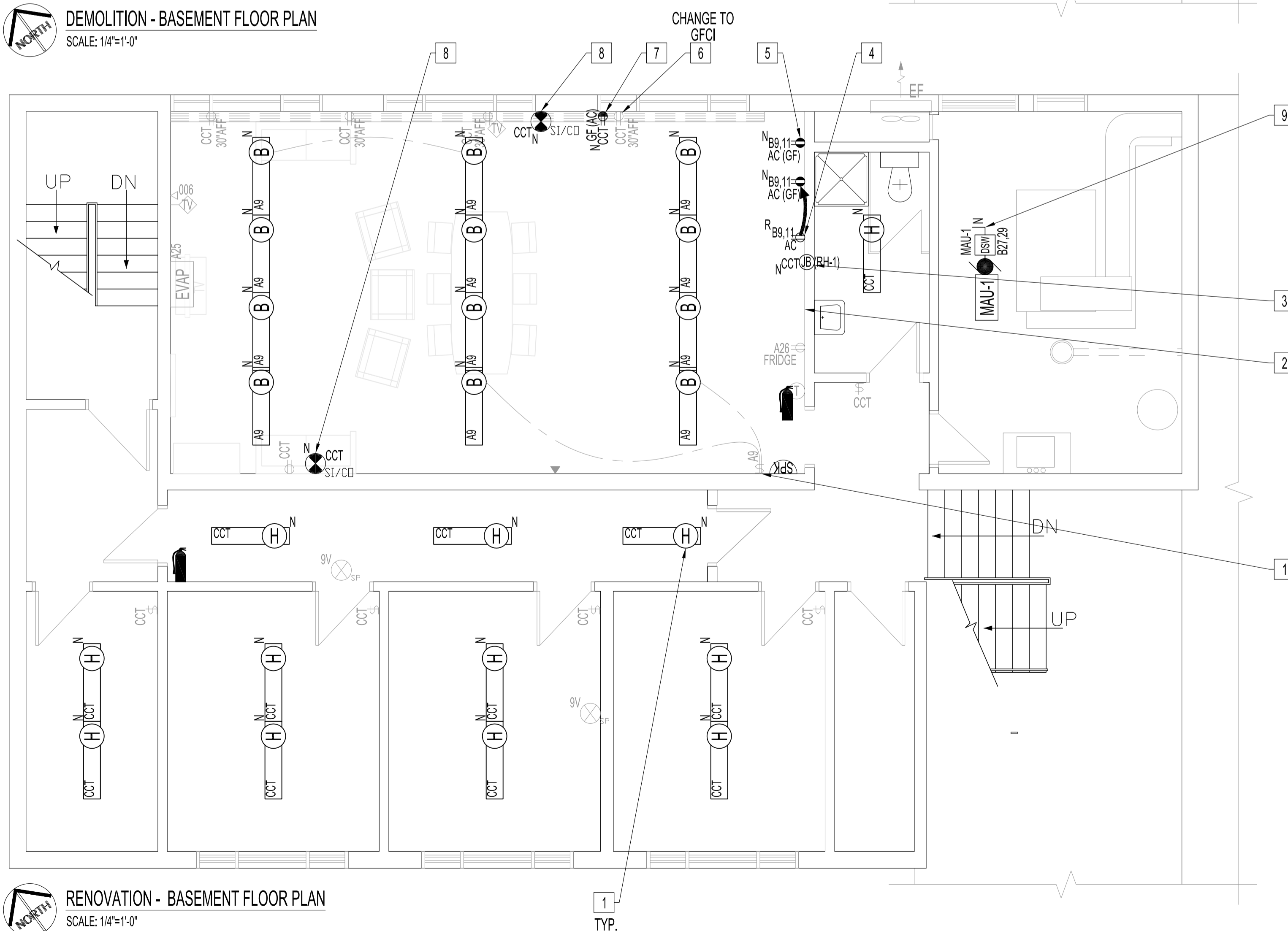
ELECTRICAL POWER & SYSTEMS

DEMOLITION NOTES: "X"

ALSO SEE NOTES & SPECIFICATIONS.

1. REMOVE RECEPTACLE & CIRCUIT BACK TO PANEL.
2. RELOCATE RECEPTACLE & CIRCUIT, SEE RENOVATION NOTES.
3. REPLACE TYPE 'A' LUMINAIRES, SEE RENOVATION NOTE.
4. RELOCATE SPEAKER TO ADJACENT WALL & TIGHT AGAINST CEILING TO CONCEAL SPEAKER WIRE.

DEMOLITION - BASEMENT FLOOR PLAN
SCALE: 1/4"=1'-0"



ELECTRICAL POWER & SYSTEMS

RENOVATION NOTES: "X"

ALSO SEE NOTES & SPECIFICATIONS.
ALL WIRING & CABLING IN CEILING SPACE SHALL BE IN EMT OR AC90 AS PER LATEST CEC.
COORDINATE ALL RECEPTACLE OPENINGS WITH STAINLESS STEEL CABINET MANUFACTURER.

1. REPLACE LUMINAIRES WITH NEW TYPE SHOWN, ALSO REPLACE RECLUNCHROOM ROOM LIGHT SWITCH WITH NEW 2-GANG DIMMER, SEE SCHEDULE.
2. PROVIDE DEDICATED RANGE RECEPTACLE, 120V, 15A CIRCUIT, #12/2 RW90 IN EMT TO 15A-1P BREAKER. MOUNT HEIGHT TO ALLOW RANGE INSTALLATION.
3. PROVIDE JUNCTION BOX BEHIND RANGE HOOD EXHAUST FAN, (RH-1), SEE MECHANICAL DRAWING. WIRE TO EXISTING CIRCUIT ??
4. RELOCATE EXISTING RECEPTACLE CIRCUIT TO AC AS SHOWN. CHANGE TO GFCI RECEPTACLE.
5. PROVIDE AC SPLIT-CIRCUIT RECEPTACLE, 120V, 15A CIRCUITS, #12/2 RW90 IN EMT TO 15A-1P BREAKERS.
6. REPLACE WITH GFCI 15A DUPLEX RECEPTACLE.
7. PROVIDE DEDICATED APPLIANCE RECEPTACLES & CIRCUITS SHOWN, 120V, 15A CIRCUIT, #12/2 RW90 IN EMT TO 15A-1P BREAKER. CONFIRM LOCATIONS WITH CONTRACT ADMINISTRATOR.
8. PROVIDE WALL-MOUNTED SMOKE/CO DETECTOR, 120V WITH BATTERY BACK-UP. WIRE TO AVAILABLE CIRCUIT.
9. PROVIDE DISCONNECT SWITCH & 240V, 50A CIRCUIT, #6/3 RW90 IN EMT TO 50A-2P CIRCUIT BREAKER. USE CURRENT SENSOR ON MAU-1 TO INTERLOCK, MAU-1, WITH RANGE HOOD, RH-1, AS PER MANUFACTURER INSTRUCTIONS.

No.	REVISION/DESCRIPTION	BY	DATE
0	ISSUE FOR CONSTRUCTION	DTA	2017.11.15



DRAWN	DTA	CHECKED	DESIGNED	DTA	APPROVED
DATE	2017.10.23	USER	APPROVAL		

THE CITY OF WINNIPEG
PLANNING, PROPERTY AND
DEVELOPMENT DEPARTMENT
MUNICIPAL ACCOMMODATIONS DIVISION
3-65 GARRY STREET, R3C 4K4

PROJECT
WINNIPEG FIRE PARAMEDIC SERVICES
STATION No.17
INTERIOR RENOVATIONS
1501 CHURCH AVENUE
BID OPP: 1013-2017

SHEET TITLE
BASEMENT FLOOR PLAN
DEMOLITION AND RENOVATION
POWER AND SYSTEMS

SCALE	PROJECT No:	SHEET No:
AS SHOWN	2017-110	E2