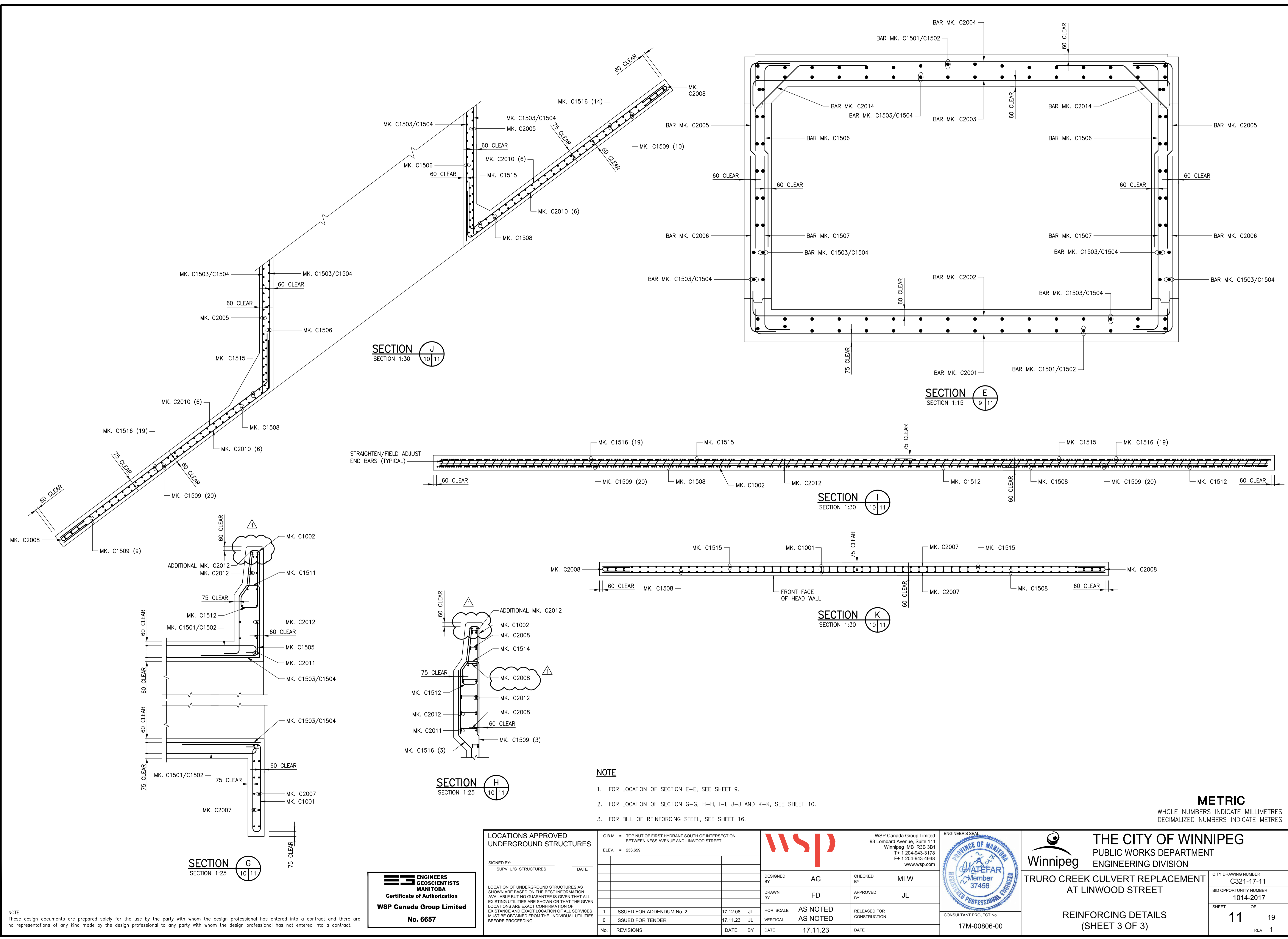


A1 SIZE (594 mm x 841 mm) | Layout: 11 Reinforcing Details (Sheet 3 of 3) | P:\2017\17M-0806-00 - Truro Creek Culvert Replacements\17M-0806-00 Truro Creek Culvert Replacements DD Linwood 07-11 concrete and reinforcing details.dwg | Last saved by: Popresenc | Printed: December 8, 2017 at 12:16:24 PM



- NOTE**
1. FOR LOCATION OF SECTION E-E, SEE SHEET 9.
 2. FOR LOCATION OF SECTION G-G, H-H, I-I, J-J AND K-K, SEE SHEET 10.
 3. FOR BILL OF REINFORCING STEEL, SEE SHEET 16.

**ENGINEERS
GEOSCIENTISTS
MANITOBA**
 Certificate of Authorization
WSP Canada Group Limited
 No. 6657

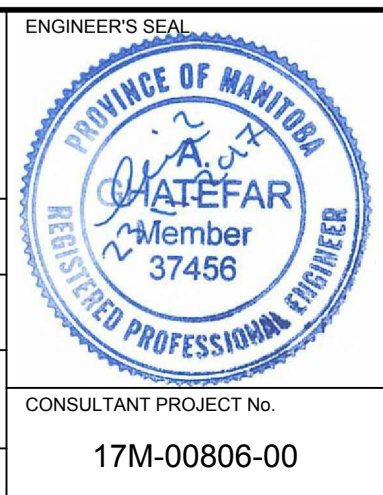
LOCATIONS APPROVED UNDERGROUND STRUCTURES

SIGNED BY: _____ DATE: _____
 SUPV. U/G STRUCTURES

LOCATION OF UNDERGROUND STRUCTURES AS SHOWN ARE BASED ON THE BEST INFORMATION AVAILABLE BUT NO GUARANTEE IS GIVEN THAT ALL EXISTING UTILITIES ARE SHOWN OR THAT THE GIVEN LOCATIONS ARE EXACT CONFIRMATION OF EXISTANCE AND EXACT LOCATION OF ALL SERVICES MUST BE OBTAINED FROM THE INDIVIDUAL UTILITIES BEFORE PROCEEDING

| | |
|--|---------------------------|
| G.B.M. = TOP NUT OF FIRST HYDRANT SOUTH OF INTERSECTION BETWEEN NESS AVENUE AND LINWOOD STREET | |
| ELEV. = 233.659 | |
| No. | REVISIONS |
| 1 | ISSUED FOR ADDENDUM No. 2 |
| 0 | ISSUED FOR TENDER |
| DATE | BY |
| 17.12.08 | JL |
| 17.11.23 | JL |

| | | | |
|-------------|----------|--|----------|
| | | WSP Canada Group Limited 93 Lombard Avenue, Suite 111 Winnipeg MB R3B 3B1 T+ 1 204-943-3178 F+ 1 204-943-4948 www.wsp.com | |
| DESIGNED BY | AG | CHECKED BY | MLW |
| DRAWN BY | FD | APPROVED BY | JL |
| HOR. SCALE | AS NOTED | RELEASED FOR CONSTRUCTION | |
| VERTICAL | AS NOTED | DATE | 17.11.23 |



THE CITY OF WINNIPEG
 PUBLIC WORKS DEPARTMENT
 ENGINEERING DIVISION
TRURO CREEK CULVERT REPLACEMENT AT LINWOOD STREET
 REINFORCING DETAILS (SHEET 3 OF 3)

| | |
|------------------------|------------|
| CITY DRAWING NUMBER | C321-17-11 |
| BID OPPORTUNITY NUMBER | 1014-2017 |
| SHEET OF | 11 19 |
| REV | 1 |

METRIC
 WHOLE NUMBERS INDICATE MILLIMETRES
 DECIMALIZED NUMBERS INDICATE METRES

NOTE: These design documents are prepared solely for the use by the party with whom the design professional has entered into a contract and there are no representations of any kind made by the design professional to any party with whom the design professional has not entered into a contract.