

A1 SIZE (594 mm x 841 mm)
 Plotted: December 8, 2017 at 12:16:43 PM | Last saved by: Popresenc
 File: P:\2017\17M-0806-00 - Truro Creek Culvert Replacements\MM Drawings\17M-0806-00 Truro Creek Culvert Replacements DD Linwood 16 17 bill of materials.dwg | Layout: 17 Bill of Reinforcing Steel (Sheet 2 of 2)

**BILL OF REINFORCING STEEL
FOR BOX CULVERT (SUBSTRUCTURE)**

MARK	TYPE	PIN DIAMETER	LENGTH	No.	MASS	BENDING DIAGRAM
C2001	BENT	120	5 630	74	981.14	
C2002	BENT	120	5 400	123	1 564.19	
C2003	BENT	120	5 400	147	1 869.40	
C2004	BENT	120	5 630	74	981.14	
C2005	BENT	120	1 985	246	1 149.97	
C2006	BENT	120	1 950	246	1 129.69	
C2007	STR		9 255	24	523.09	
C2008	BENT	120	1 760	84	348.16	
C2009	BENT	120	2 680	16	100.98	
C2010-1	BENT	120	2 880	8	54.26	
C2010-2	BENT	120	3 310	8	62.36	
C2010-3	BENT	120	3 735	8	70.37	
C2010-4	BENT	120	4 160	8	78.37	

CONTINUED →

**BILL OF REINFORCING STEEL
FOR BOX CULVERT (SUBSTRUCTURE)**

MARK	TYPE	PIN DIAMETER	LENGTH	No.	MASS	BENDING DIAGRAM
C2010-5	BENT	120	4 585	8	86.38	
C2010-6	BENT	120	5 010	8	94.39	
C2011	STR		14 775	4	139.18	
C2012	STR		15 255	28	1 005.91	
C2013	BENT	120	4 800	48	542.59	
C2014	BENT	120	1 115	126	330.85	

TOTAL MASS OF REINFORCING STEEL: 18 787.93 kg

**BILL OF REINFORCING STEEL
FOR TWO APPROACH SLABS**

MARK	TYPE	PIN DIAMETER	LENGTH	No.	MASS	BENDING DIAGRAM
A1001	STR		4 680	4	14.70	
A1501	BENT	95	4 895	76	584.07	
A1502	STR		3 675	96	553.90	
A1503	BENT	95	900	76	107.39	
A1504	BENT	95	1 250	148	290.45	
A1505	BENT	95	1 585	120	298.61	
A2001	STR	120	7 500	80	1 413.00	
A2501	BENT	150	5 080	120	2 392.68	

TOTAL MASS OF REINFORCING STEEL: 5 654.80 kg

**BILL OF REINFORCING STEEL
FOR FOUR TRANSITION BARRIERS**

MARK	TYPE	PIN DIAMETER	LENGTH	No.	MASS	BENDING DIAGRAM
B1501	STR		2 130	117	391.26	
B1502	STR		2 880	72	325.56	
B1503	STR		2 380	16	59.79	
B2001-1	STR		1 000	6	14.13	
B2001-2	STR		950	6	13.42	
B2001-3	STR		900	6	12.72	
B2001-4	STR		850	6	12.01	
B2001-5	STR		800	6	11.30	
B2001-6	STR		750	6	10.60	
B2001-7	STR		700	6	9.89	
B2001-8	STR		650	6	9.18	
B2001-9	STR		600	6	8.48	
B2001-10	STR		550	6	7.77	
B2001-11	STR		510	6	7.21	
B2001-12	STR		460	6	6.50	
B2001-13	STR		410	6	5.79	
B2001-14	STR		360	6	5.09	
B2001-15	STR		310	6	4.38	
B2002-1	STR		970	2	4.57	
B2002-2	STR		880	2	4.14	
B2002-3	STR		790	2	3.72	
B2002-4	STR		700	2	3.30	
B2002-5	STR		600	2	2.83	
B2002-6	STR		510	2	2.40	
B2002-7	STR		420	2	1.98	
B2002-8	STR		340	2	1.60	

TOTAL MASS OF REINFORCING STEEL: 939.62 kg

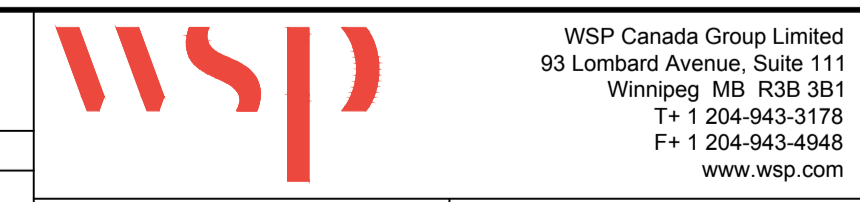


**LOCATIONS APPROVED
UNDERGROUND STRUCTURES**

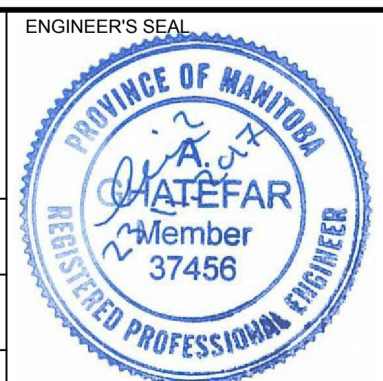
SIGNED BY: _____ DATE: _____
 SUPV. U/G STRUCTURES

LOCATION OF UNDERGROUND STRUCTURES AS SHOWN ARE BASED ON THE BEST INFORMATION AVAILABLE BUT NO GUARANTEE IS GIVEN THAT ALL EXISTING UTILITIES ARE SHOWN OR THAT THE GIVEN LOCATIONS ARE EXACT CONFIRMATION OF EXISTENCE AND EXACT LOCATION OF ALL SERVICES MUST BE OBTAINED FROM THE INDIVIDUAL UTILITIES BEFORE PROCEEDING

G.B.M. = TOP NUT OF FIRST HYDRANT SOUTH OF INTERSECTION BETWEEN NESS AVENUE AND LINWOOD STREET	ELEV. = 233.659
DESIGNED BY: AG	CHECKED BY: MLW
DRAWN BY: FD	APPROVED BY: JL
HOR. SCALE: N.T.S.	RELEASED FOR CONSTRUCTION
VERTICAL: N.T.S.	
1 ISSUED FOR ADDENDUM No. 2	17.12.08 JL
0 ISSUED FOR TENDER	17.11.23 JL
No. REVISIONS	DATE BY DATE



WSP Canada Group Limited
 93 Lombard Avenue, Suite 111
 Winnipeg MB R3B 3B1
 T+ 1 204-943-3178
 F+ 1 204-943-4948
 www.wsp.com



CONSULTANT PROJECT No.
17M-00806-00

THE CITY OF WINNIPEG
 PUBLIC WORKS DEPARTMENT
 ENGINEERING DIVISION

TRURO CREEK CULVERT REPLACEMENT
 AT LINWOOD STREET

CITY DRAWING NUMBER: C321-17-17
 BID OPPORTUNITY NUMBER: 1014-2017
 SHEET OF: 17 OF 19
 REV 1

BILL OF REINFORCING STEEL
 (SHEET 2 OF 2)

METRIC
 WHOLE NUMBERS INDICATE MILLIMETRES
 DECIMALIZED NUMBERS INDICATE METRES