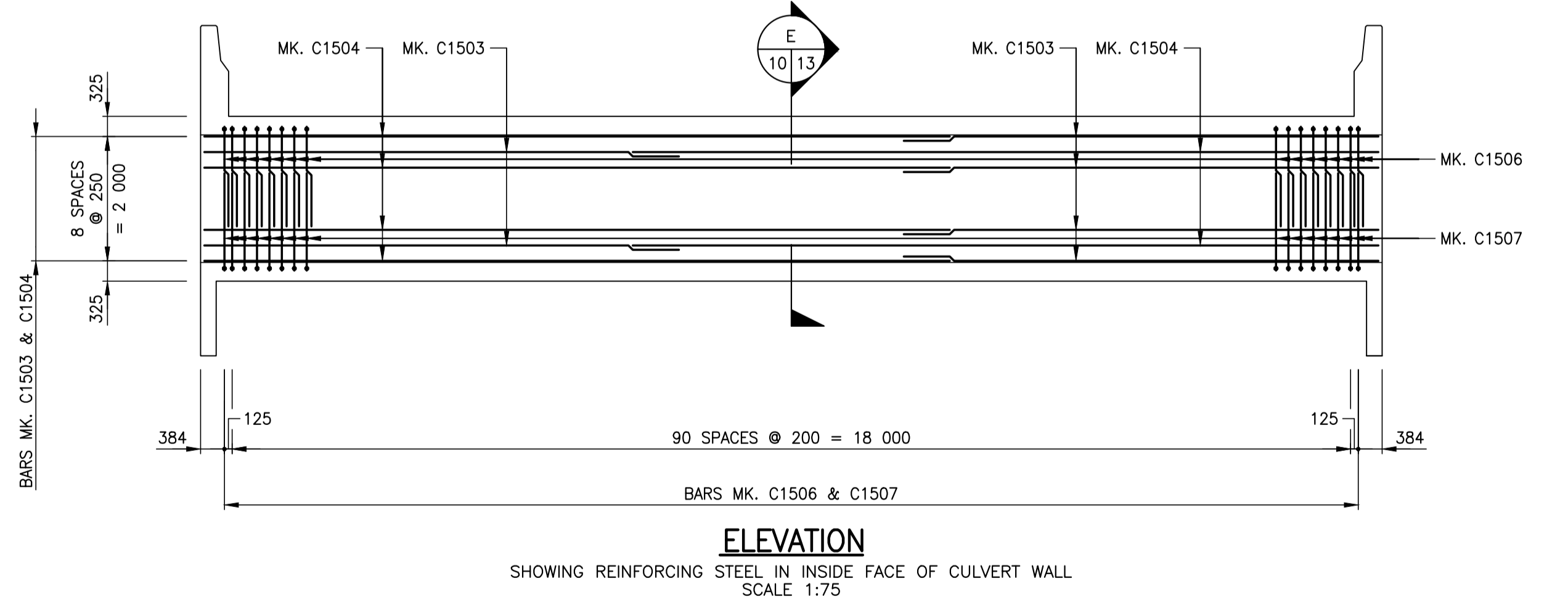
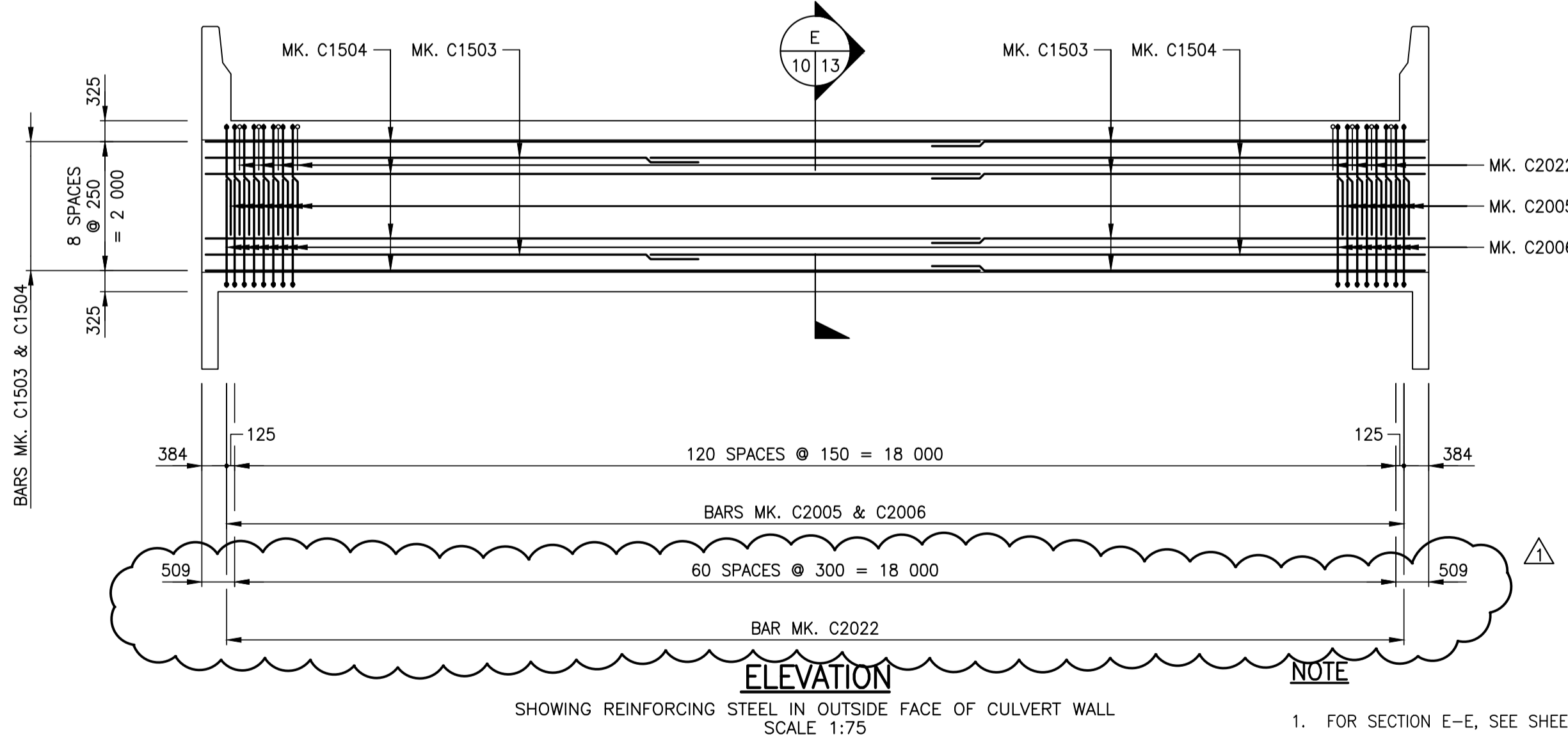
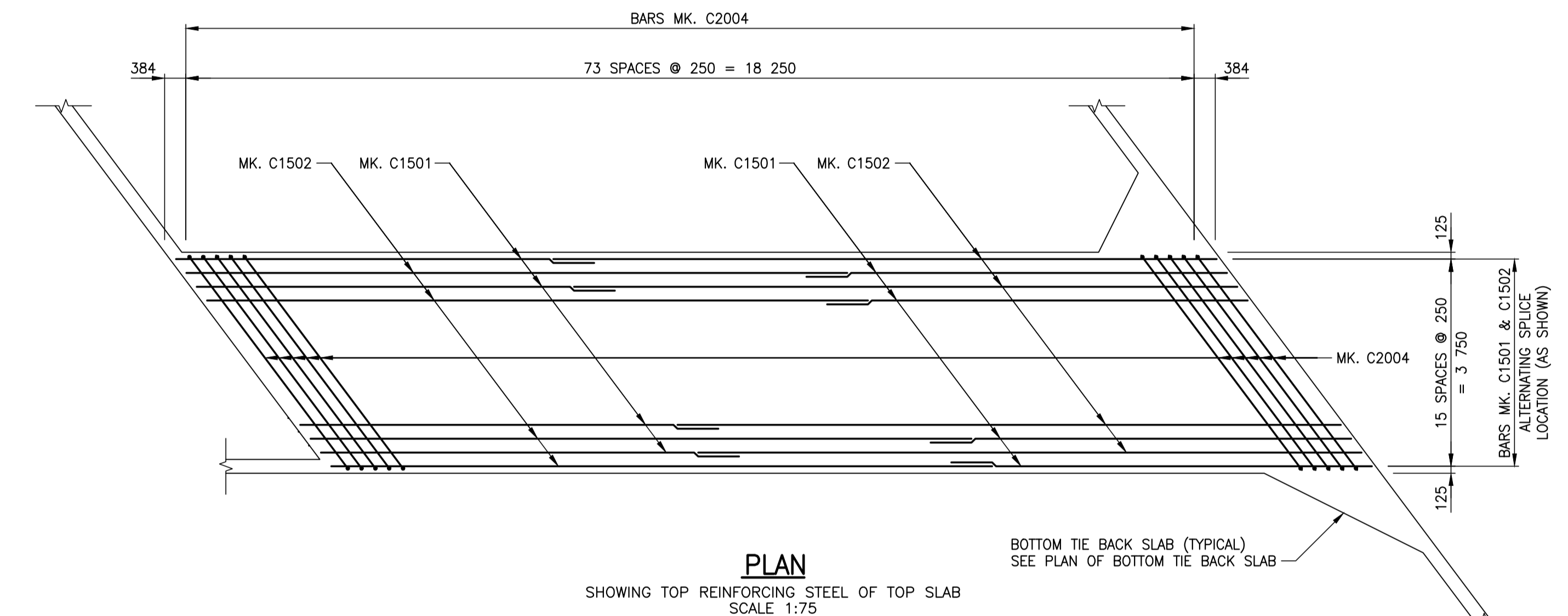
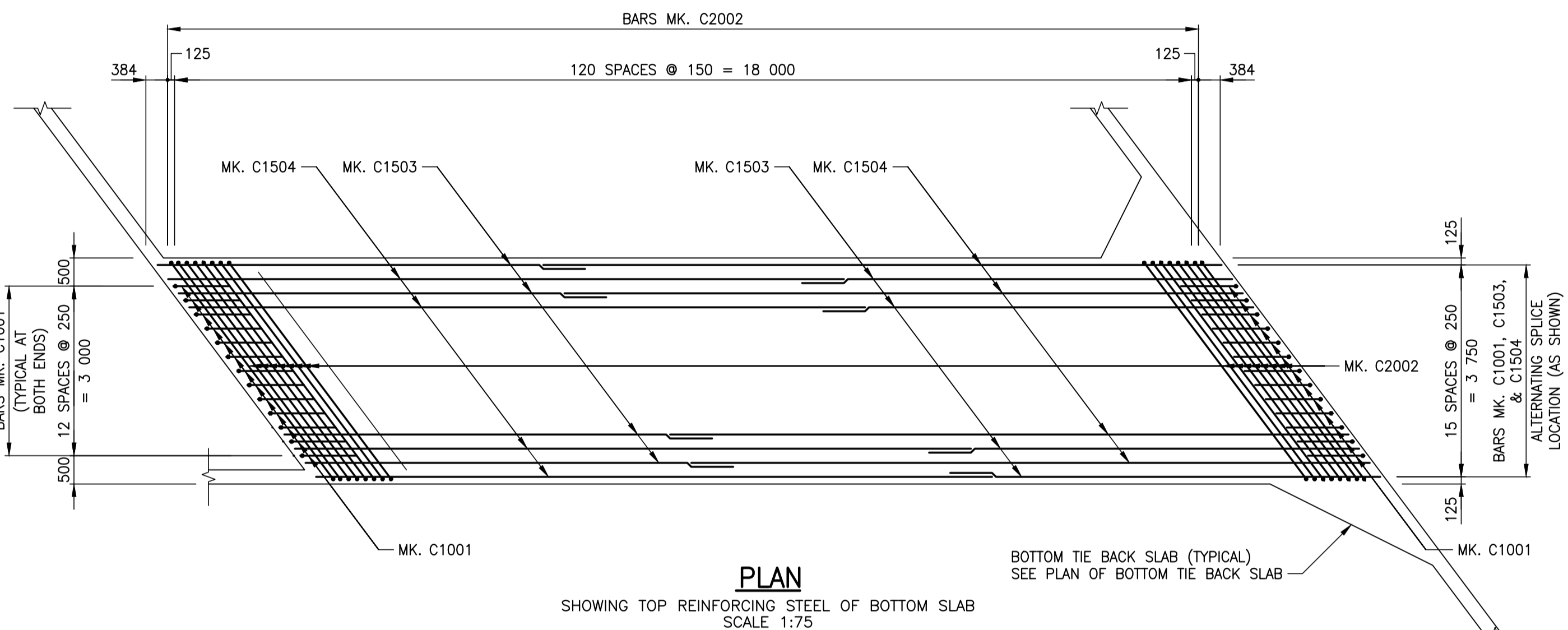
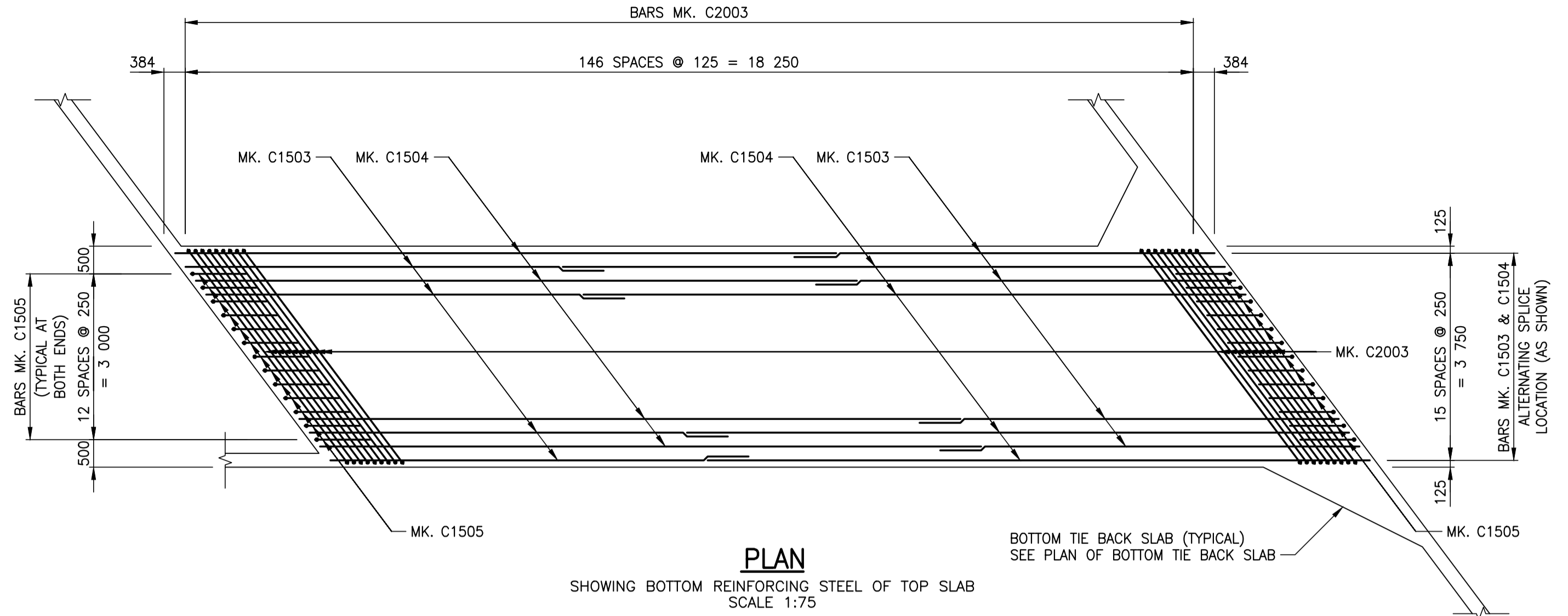
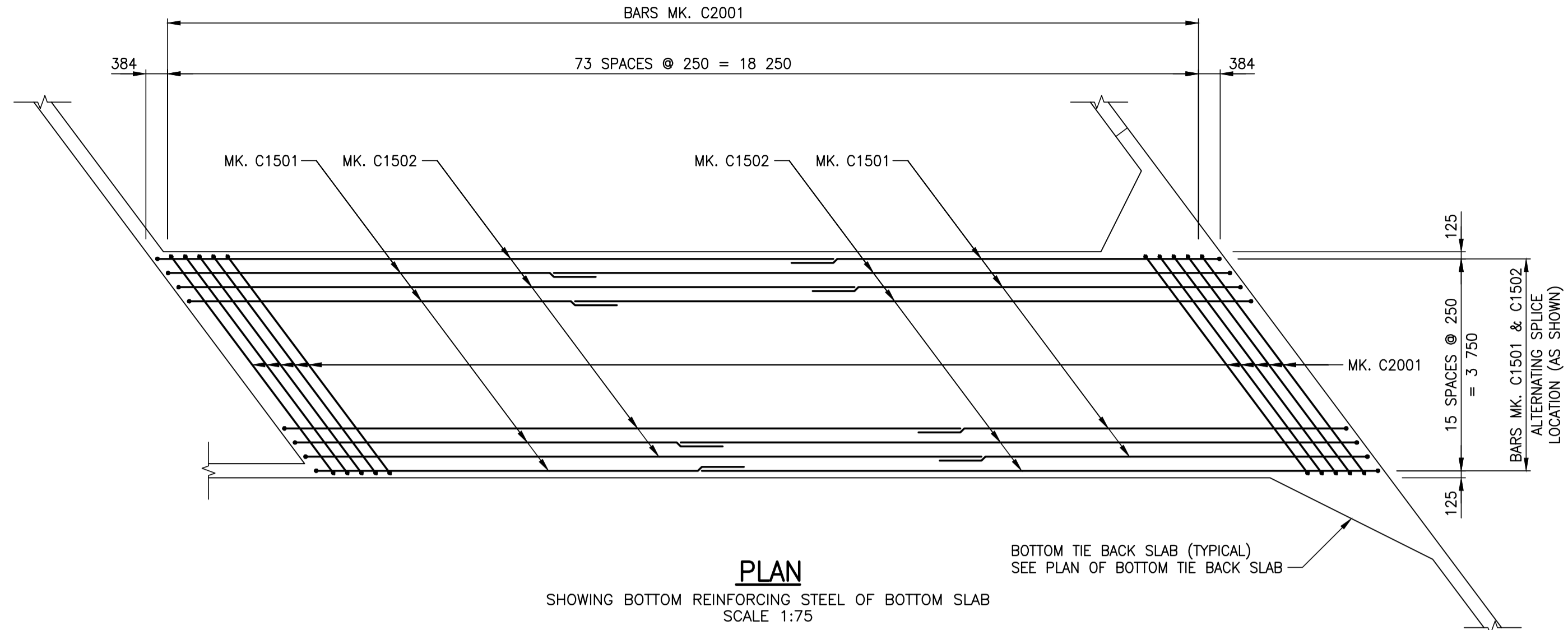


A1 SIZE (594 mm x 841 mm) | Layout: 10 Reinforcing Details (Sheet 1 of 5) | Printed: December 8, 2017 at 12:13:11 PM | Last saved by: Popresenc | File: F:\2017\17M-0806-00 - Truro Creek Culvert Replacements\MM Drawings\17M-0806-00 Truro Creek Culvert Replacements DD Winchester 08-15 concrete and reinforcing details.dwg



- FOR SECTION E-E, SEE SHEET 13.
- FOR BILL OF REINFORCING STEEL, SEE SHEET 21 TO 22.



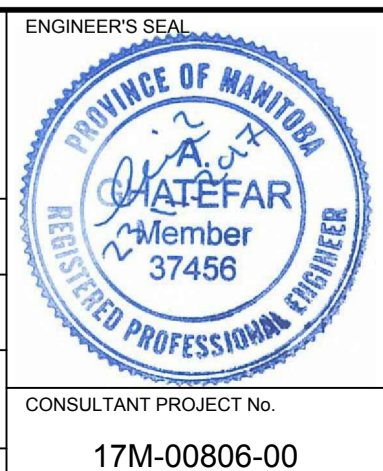
LOCATIONS APPROVED UNDERGROUND STRUCTURES

SIGNED BY: _____ DATE: _____
SUPV. U/G STRUCTURES

LOCATION OF UNDERGROUND STRUCTURES AS SHOWN ARE BASED ON THE BEST INFORMATION AVAILABLE BUT NO GUARANTEE IS GIVEN THAT ALL EXISTING UTILITIES ARE SHOWN OR THAT THE GIVEN LOCATIONS ARE EXACT CONFIRMATION OF EXISTENCE AND EXACT LOCATION OF ALL SERVICES MUST BE OBTAINED FROM THE INDIVIDUAL UTILITIES BEFORE PROCEEDING

G.B.M. = TOP NUT OF FIRST HYDRANT SOUTH OF INTERSECTION BETWEEN NESS AVENUE AND LINWOOD STREET			
ELEV. = 233.659			
No.	REVISIONS	DATE	BY
1	ISSUED FOR ADDENDUM No. 2	17.12.08	JL
0	ISSUED FOR TENDER	17.11.23	JL
No.	REVISIONS	DATE	BY
		17.11.23	

wsp		WSP Canada Group Limited 93 Lombard Avenue, Suite 111 Winnipeg MB R3B 3B1 T+ 1 204-943-3178 F+ 1 204-943-4948 www.wsp.com	
DESIGNED BY	AG	CHECKED BY	MLW
DRAWN BY	FD	APPROVED BY	JL
HOR. SCALE	1:75	RELEASED FOR CONSTRUCTION	
VERTICAL	1:75	DATE	17.11.23



THE CITY OF WINNIPEG
PUBLIC WORKS DEPARTMENT
ENGINEERING DIVISION

Winnipeg

TRURO CREEK CULVERT REPLACEMENT AT WINCHESTER STREET

REINFORCING DETAILS (SHEET 1 OF 5)

CONSULTANT PROJECT No. 17M-0806-00

CITY DRAWING NUMBER C322-17-10
BID OPPORTUNITY NUMBER 1014-2017
SHEET 10 OF 25
REV 1

NOTE: These design documents are prepared solely for the use by the party with whom the design professional has entered into a contract and there are no representations of any kind made by the design professional to any party with whom the design professional has not entered into a contract.

METRIC
WHOLE NUMBERS INDICATE MILLIMETRES
DECIMALIZED NUMBERS INDICATE METRES