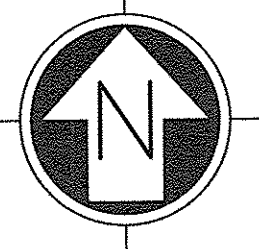


A1 SIZE - 594mm x 841mm



LEGEND:

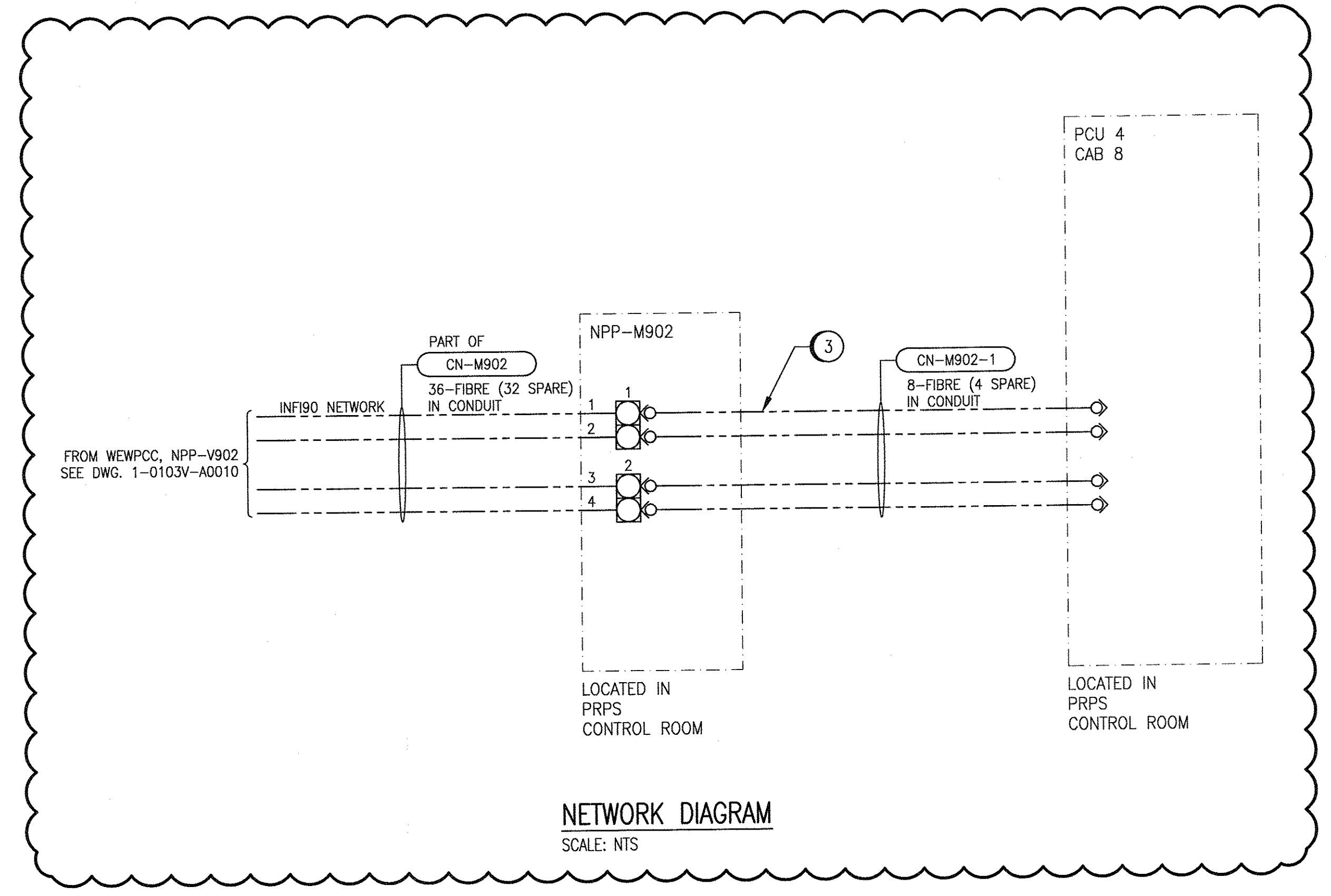
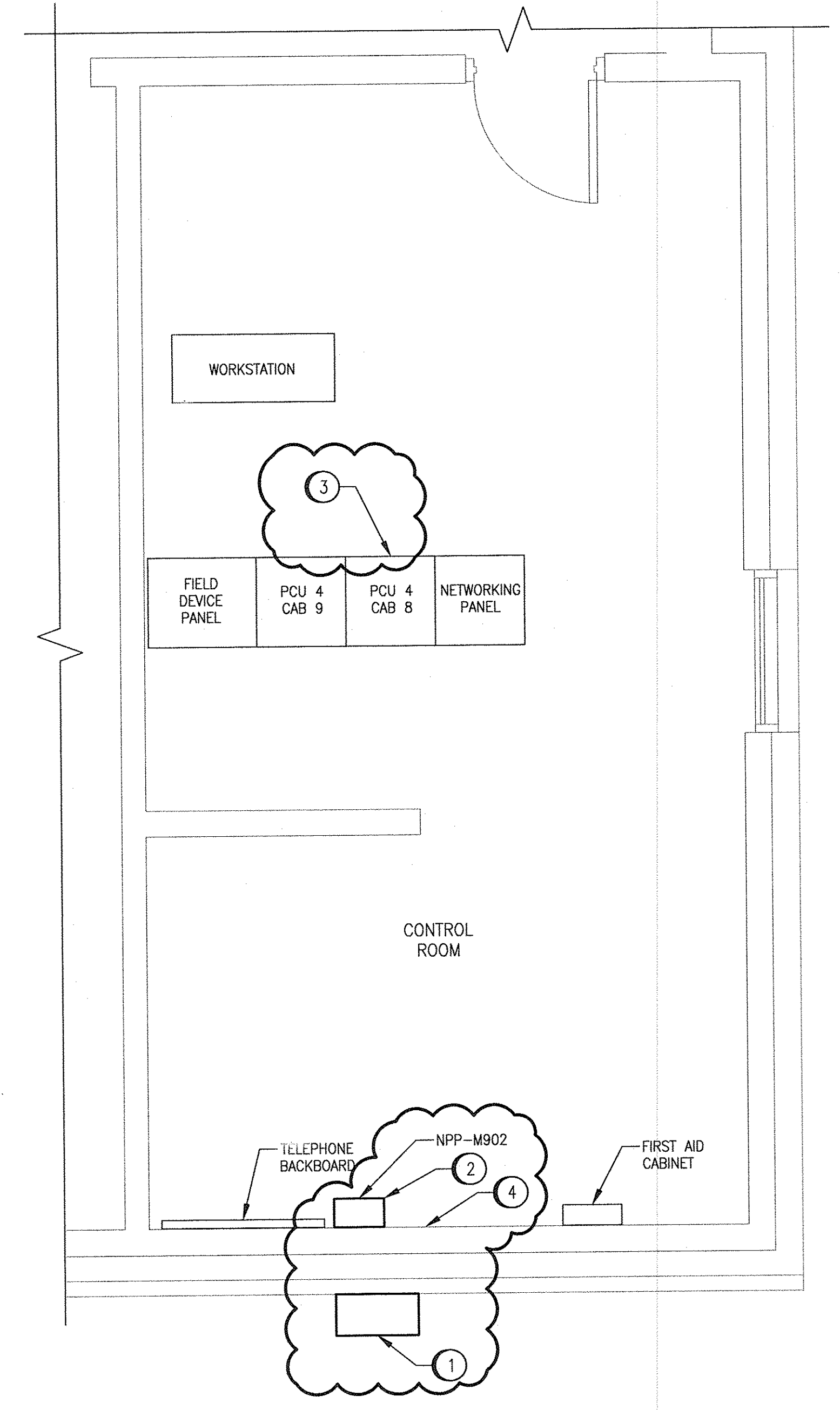
- FIBRE PORT OR PATCH PANEL
- FIBRE CABLE
- FIBRE CONNECTOR

GENERAL NOTES:

1. THIS DRAWING DEPICTS AN EXISTING AREA. NEW WORK IS SHOWN CLOUDED.
2. ALL CONDUIT WITHIN THE BUILDING SHALL BE RIGID, THREADED ALUMINUM CONDUIT.

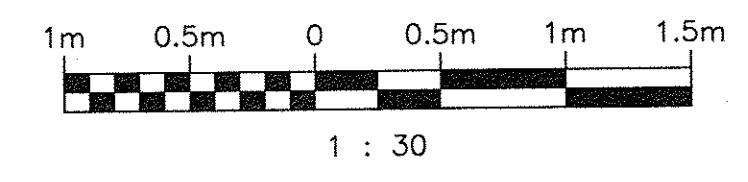
SPECIFIC NOTES:

1. PROVIDE A LOCKABLE NEMA 4 610mm x 610mm x 305mm PULL BOX MOUNTED ON EXTERIOR WALL. COIL A MINIMUM OF 3.0m OF CABLE WITHIN BOX.
2. PROVIDE WALL MOUNT PATCH PANEL FOR TERMINATION OF FIBRE CABLE. PROVIDE RIGID ALUMINUM CONDUIT FOR FIBRE CABLE RUN WITHIN THE BUILDING.
3. PROVIDE FIBRE CABLE FROM PATCH PANEL NPP-M902 TO DCS CABINET 8 IN RIGID ALUMINUM CONDUIT. COIL SUFFICIENT CABLE WITHIN DCS CABINET FOR CONNECTION TO FIBRE TO SERIAL CONVERTERS INSTALLED BY CITY FORCES. COORDINATE WITH CONTRACT ADMINISTRATOR AS REQUIRED. PROVIDE 4 SPARE FIBRES.
4. INSTALL CABLE THROUGH EXTERIOR WALL. MAKE WEATHER PROOF AND RESTORE EXISTING BUILDING FINISHES.



LAST SAVE: 2018/01/29 - 10:46am
PATH: M:\650612\4ENGL\7E1E\VD - General DWG\1-0103M-A002.dwg

1-0103A-A001 1-0103A-E0021 DRAWING NUMBER	FACILITY FIBRE ALLOCATION FIBRE ROUTE REFERENCE DRAWINGS
---	--



NO.	REVISIONS	DATE	DESIGN	CHECK
00	ISSUED FOR CONSTRUCTION	2018/01/26	BD	TMC

SNC-LAVALIN	
DESIGNED BY: B. DEGUZMAN	CHECKED BY: T. CHURCH
DRAWN BY: B. DE GUZMAN	APPROVED BY: T. CHURCH
SCALE: AS SHOWN	ISSUED FOR CONSTRUCTION BY: A. WOLFE
DATE: 2017/10/27	DATE: 2018/01/26
CONSULTANT NO.:	



THE CITY OF WINNIPEG WATER AND WASTE DEPARTMENT	
WEST END WATER POLLUTION CONTROL CENTRE WEWPC TO PERIMETER ROAD PUMPING STATION (PRPS) FIBRE PROJECT PRPS DETAILS	
CITY DRAWING NUMBER 1-0103M-A0002	SHEET 001
REV. 00	SIZE A1

1-0103M-A0002.dwg