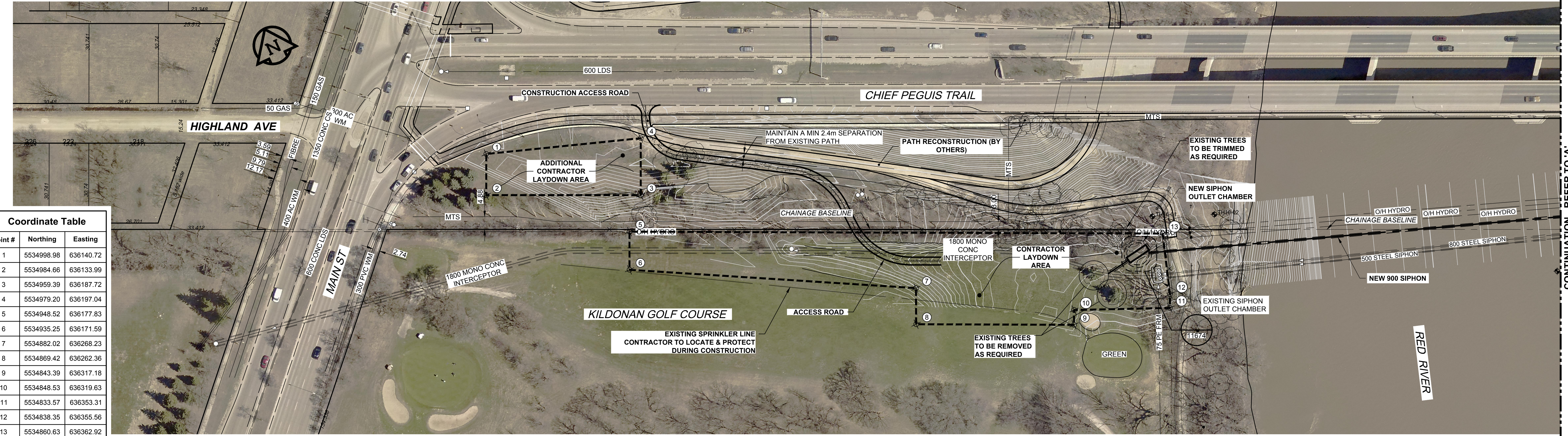


Coordinate Table

Point #	Northing	Easting
1	5534998.98	636140.72
2	5534984.66	636133.99
3	5534959.39	636187.72
4	5534979.20	636197.04
5	5534948.52	636177.83
6	5534935.25	636171.59
7	5534882.02	636268.23
8	5534869.42	636262.36
9	5534843.39	636317.18
10	5534848.53	636319.63
11	5534833.57	636353.31
12	5534838.35	636355.56
13	5534860.63	636362.92



CONTINUATION - REFER TO 'A'



Coordinate Table

Point #	Northing	Easting
14	5534809.33	636563.35
15	5534772.58	636546.07
16	5534751.66	636589.39
17	5534757.55	636592.23
18	5534734.49	636639.97
19	5534752.67	636648.72
20	5534769.66	636613.49
21	5534792.88	636598.32

WARNING
 IF POWER EQUIPMENT OR EXPLOSIVES ARE TO BE USED FOR EXCAVATION ON THIS PROJECT, THE CONTRACTOR MUST:
 1) NOTIFY THE GAS COMPANY OF THE PROPOSED LOCATION OF EXCAVATION.
 2) TAKE PRECAUTION TO AVOID DAMAGE TO GAS COMPANY INSTALLATIONS.
 SEE PROVINCIAL REGULATION 140/92 FOR DETAILS.

**PRELIMINARY
 NOT FOR CONSTRUCTION**

METRIC
 WHOLE NUMBERS INDICATE MILLIMETRES
 DECIMALIZED NUMBERS INDICATE METRES

BID OPPORTUNITY NO. 1136-2017B

EXISTING	LEGEND - PLAN	NEW	EXISTING	LEGEND - PLAN	NEW	EXISTING	LEGEND - PROFILE	NEW
	WATERMAIN			CURB STOP			WATERMAIN	
	HYDRANT			REDUCER			HYDRANT	
	VALVE			COUPLING			VALVE	
	LAND DRAINAGE SEWER			ANODE			LAND DRAINAGE SEWER	
	WASTE WATER SEWER			HYDRO			WASTE WATER SEWER	
	MANHOLE			MTS			PAVEMENT CROWN	
	CATCH BASIN			GAS			N/W PROPERTY LINE	
	CURB INLET			TESTHOLE			S/E PROPERTY LINE	
	CULVERT			LAMP STANDARD			N/W GUTTER	
	PIPE ABANDONMENTS			TREE			S/E GUTTER	
	SURVEY BAR							

LOCATION APPROVED
 UNDERGROUND STRUCTURES

SUPR. U/G STRUCTURES DATE COMMITTEE

NOTE:
 LOCATION OF UNDERGROUND STRUCTURES AS SHOWN ARE BASED ON THE BEST INFORMATION AVAILABLE. BUT NO GUARANTEE IS GIVEN THAT ALL EXISTING UTILITIES ARE SHOWN OR THAT THE GIVEN LOCATIONS ARE EXACT. CONFIRMATION OF EXISTENCE AND EXACT LOCATION OF ALL SERVICES MUST BE OBTAINED FROM THE INDIVIDUAL UTILITIES BEFORE PROCEEDING WITH CONSTRUCTION.

NO.	REVISIONS	DATE	BY
B	ISSUED FOR 50% REVIEW	18/02/05	KLC
A	ISSUED FOR 33% REVIEW	17/12/01	KLC

AECOM

DESIGNED BY: ADB
 CHECKED BY:
 DRAWN BY: ADL/KLC
 APPROVED BY:
 HOR. SCALE: 1:750
 VERT. SCALE: N/A
 DATE:

PROFESSIONAL'S SEAL
 CONSULTANT DRAWING NO. 60509089-SHT-30-0000-C-1001

THE CITY OF WINNIPEG
WATER AND WASTE DEPARTMENT

NORTHEAST INTERCEPTOR SEWER RIVER CROSSING

SITE PLAN
 CONSTRUCTION STAGING

SHEET 01 OF 09
 CITY DRAWING NUMBER 11668
 REV B