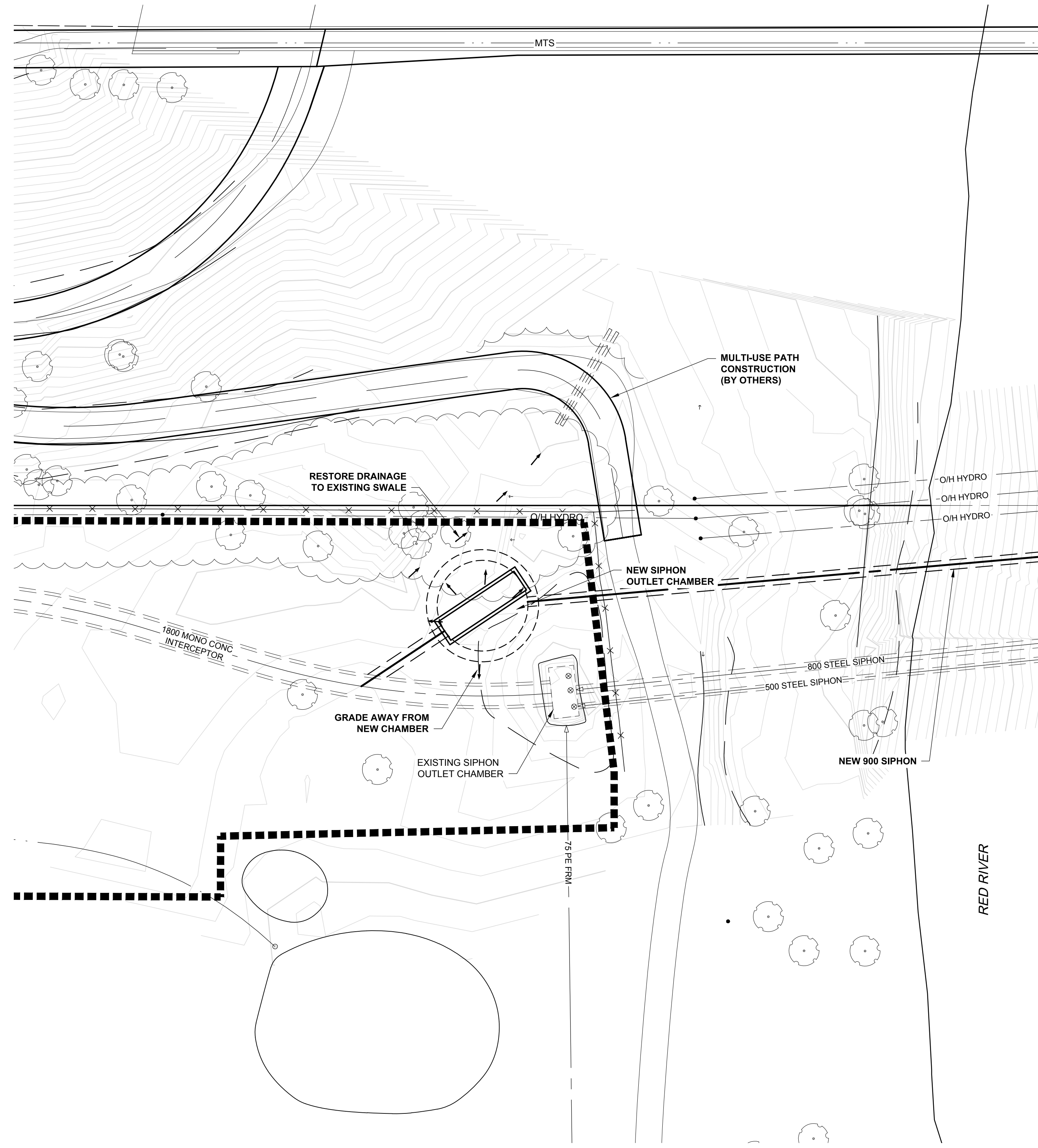


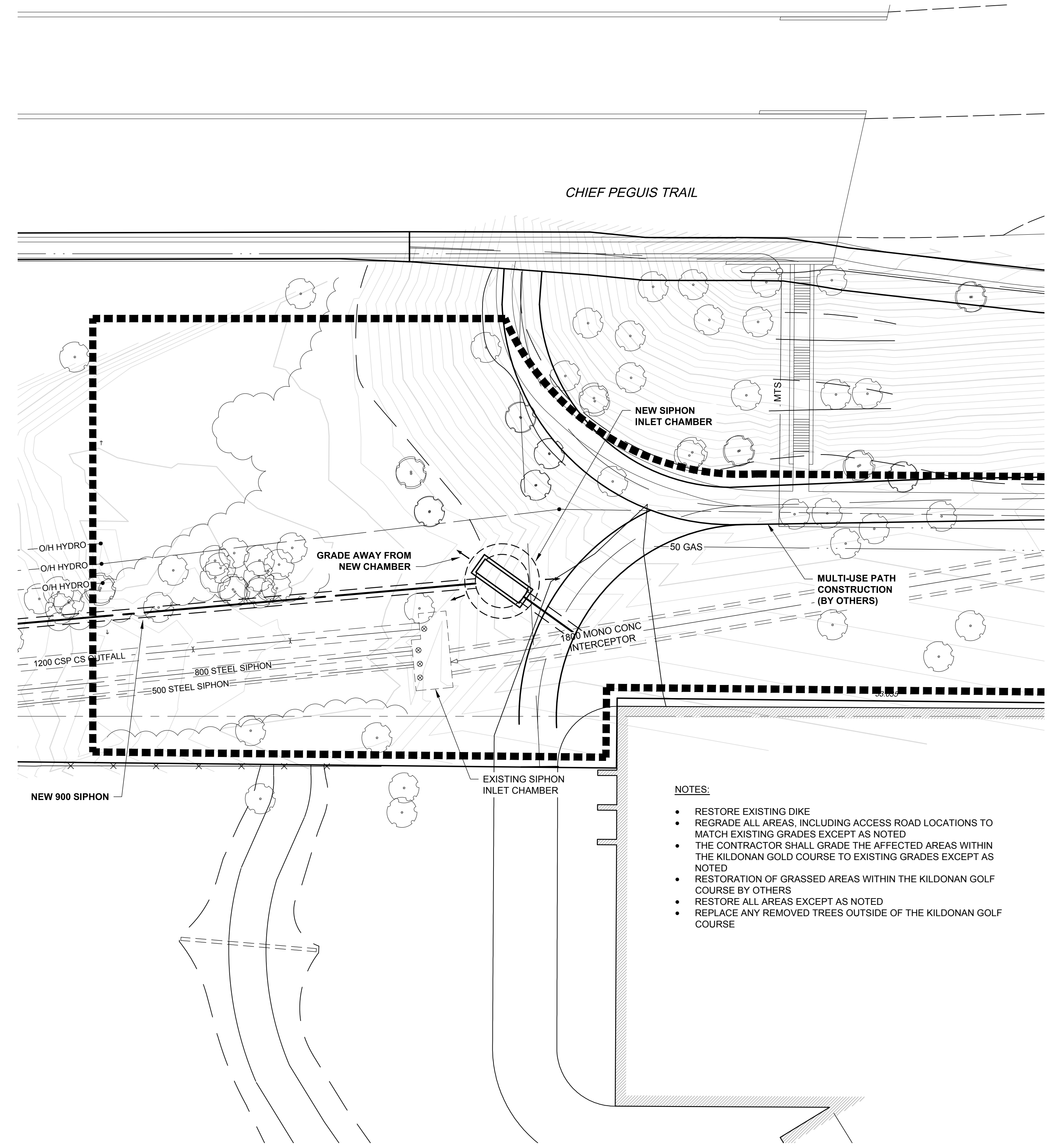
D SIZE 22" x 34" (559mm x 864mm)

PLOT: 2/6/2018 4:18:07 PM

AECOM REVIEW DRFT CHK AECOM FILE NAME: 60509089-SHT-30-0000-C-1001.dwg Saved By: cooperkrl



PLAN - WEST
Scale 1:250



PLAN - EAST
Scale 1:250

- NOTES:**
- RESTORE EXISTING DIKE
 - REGRADE ALL AREAS, INCLUDING ACCESS ROAD LOCATIONS TO MATCH EXISTING GRADES EXCEPT AS NOTED
 - THE CONTRACTOR SHALL GRADE THE AFFECTED AREAS WITHIN THE KILDONAN GOLD COURSE TO EXISTING GRADES EXCEPT AS NOTED
 - RESTORATION OF GRASSED AREAS WITHIN THE KILDONAN GOLF COURSE BY OTHERS
 - RESTORE ALL AREAS EXCEPT AS NOTED
 - REPLACE ANY REMOVED TREES OUTSIDE OF THE KILDONAN GOLF COURSE

WARNING
IF POWER EQUIPMENT OR EXPLOSIVES ARE TO BE USED FOR EXCAVATION ON THIS PROJECT, THE CONTRACTOR MUST:
1) NOTIFY THE GAS COMPANY OF THE PROPOSED LOCATION OF EXCAVATION.
2) TAKE PRECAUTION TO AVOID DAMAGE TO GAS COMPANY INSTALLATIONS.
SEE PROVINCIAL REGULATION 140/92 FOR DETAILS

METRIC
WHOLE NUMBERS INDICATE MILLIMETRES
DECIMALIZED NUMBERS INDICATE METRES

PRELIMINARY
NOT FOR CONSTRUCTION

BID OPPORTUNITY NO. 1136-2017B

EXISTING	LEGEND - PLAN	NEW	EXISTING	LEGEND - PLAN	NEW	EXISTING	LEGEND - PROFILE	NEW	EXISTING	LEGEND - PROFILE	NEW
150 WM	WATERMAIN	150 WM	150 WM	CURB STOP	150 WM	WATERMAIN	150 WM	WATERMAIN	150 WM	WATERMAIN	150 WM
HYDRANT	HYDRANT	REDUCER	REDUCER	COUPLING	COUPLING	VALVE	VALVE	VALVE	VALVE	VALVE	VALVE
300 LDS	LAND DRAINAGE SEWER	300 LDS	300 LDS	ANODE	ANODE	LAND DRAINAGE SEWER	LAND DRAINAGE SEWER	LAND DRAINAGE SEWER	LAND DRAINAGE SEWER	LAND DRAINAGE SEWER	LAND DRAINAGE SEWER
250 WWS	WASTE WATER SEWER	250 WWS	250 WWS	HYDRO	HYDRO	WASTE WATER SEWER	WASTE WATER SEWER	WASTE WATER SEWER	WASTE WATER SEWER	WASTE WATER SEWER	WASTE WATER SEWER
MANHOLE	MANHOLE	MTS	MTS	PAVEMENT CROWN	PAVEMENT CROWN	N/W PROPERTY LINE	N/W PROPERTY LINE	N/W PROPERTY LINE	N/W PROPERTY LINE	N/W PROPERTY LINE	N/W PROPERTY LINE
CATCH BASIN	CATCH BASIN	GAS	GAS	S/E PROPERTY LINE	S/E PROPERTY LINE	N/W GUTTER	N/W GUTTER	N/W GUTTER	N/W GUTTER	N/W GUTTER	N/W GUTTER
CURB INLET	CURB INLET	TESTHOLE	TESTHOLE	S/E GUTTER	S/E GUTTER						
CULVERT	CULVERT	LAMP STANDARD	LAMP STANDARD								
PIPE ABANDONMENTS	PIPE ABANDONMENTS	TREE	TREE								
SURVEY BAR	SURVEY BAR										

LOCATION APPROVED
UNDERGROUND STRUCTURES

SUPR. U/G STRUCTURES DATE COMMITTEE

NOTE:
LOCATION OF UNDERGROUND STRUCTURES AS SHOWN ARE BASED ON THE BEST INFORMATION AVAILABLE. BUT NO GUARANTEE IS GIVEN THAT ALL EXISTING UTILITIES ARE SHOWN OR THAT THE GIVEN LOCATIONS ARE EXACT. CONFIRMATION OF EXISTENCE AND EXACT LOCATION OF ALL SERVICES MUST BE OBTAINED FROM THE INDIVIDUAL UTILITIES BEFORE PROCEEDING WITH CONSTRUCTION.

NO.	REVISIONS	DATE	BY
B	ISSUED FOR 50% REVIEW	18/02/05	KLC
A	ISSUED FOR 33% REVIEW	17/12/01	KLC

AECOM		DESIGNED BY: ADB		CHECKED BY:	
DRAWN BY: ADL/KLC		APPROVED BY:		RELEASSED FOR CONSTRUCTION	
HOR. SCALE: 1:750		DATE:		DATE:	
VERT. SCALE: N/A		DATE:		DATE:	

PROFESSIONAL'S SEAL

CONSULTANT DRAWING NO.
60509089-SHT-30-0000-C-1001

THE CITY OF WINNIPEG
WATER AND WASTE DEPARTMENT

NORTHEAST INTERCEPTOR SEWER RIVER CROSSING

SITE PLAN
GRADING AND RESTORATION

SHEET 02 OF 09
CITY DRAWING NUMBER
11669

REV B