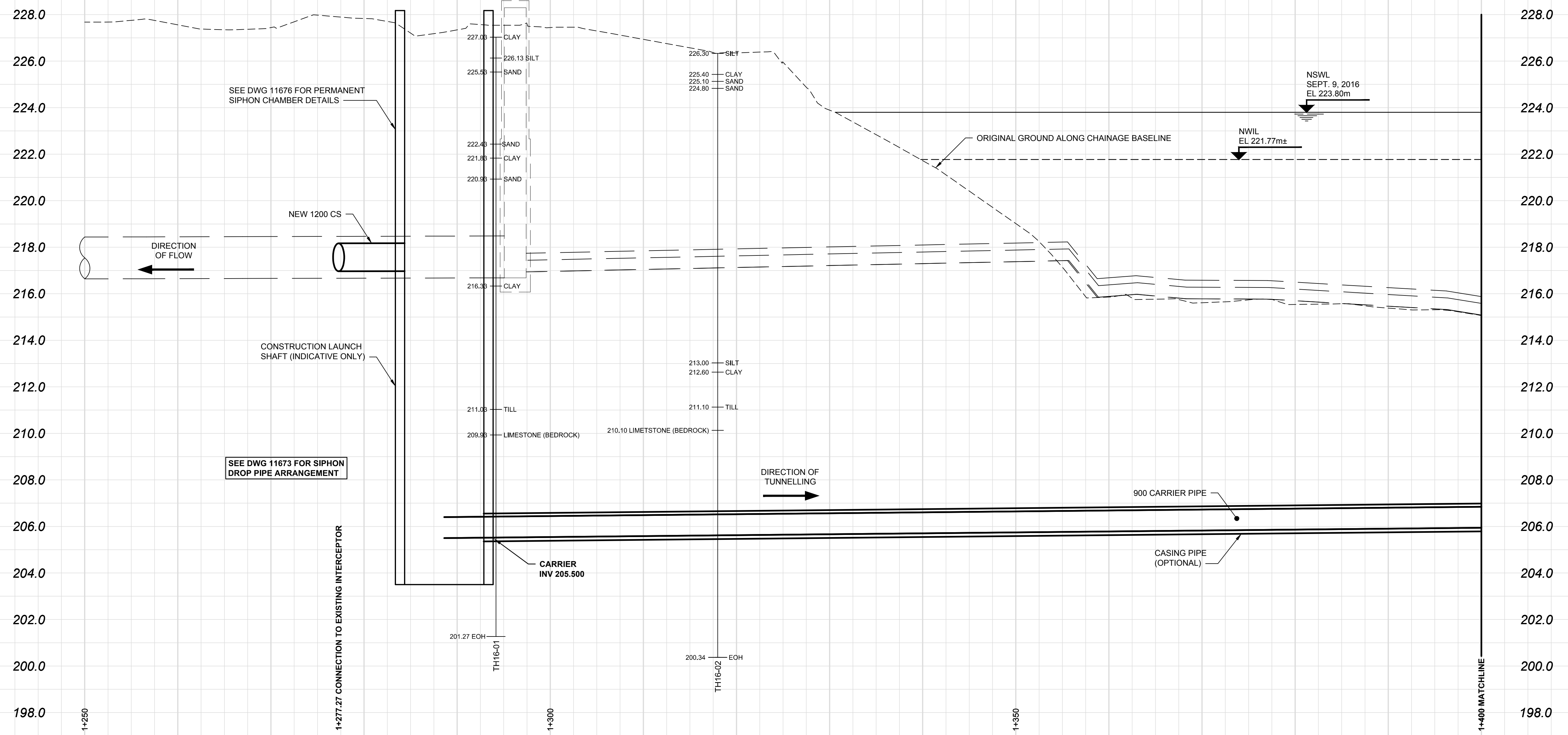


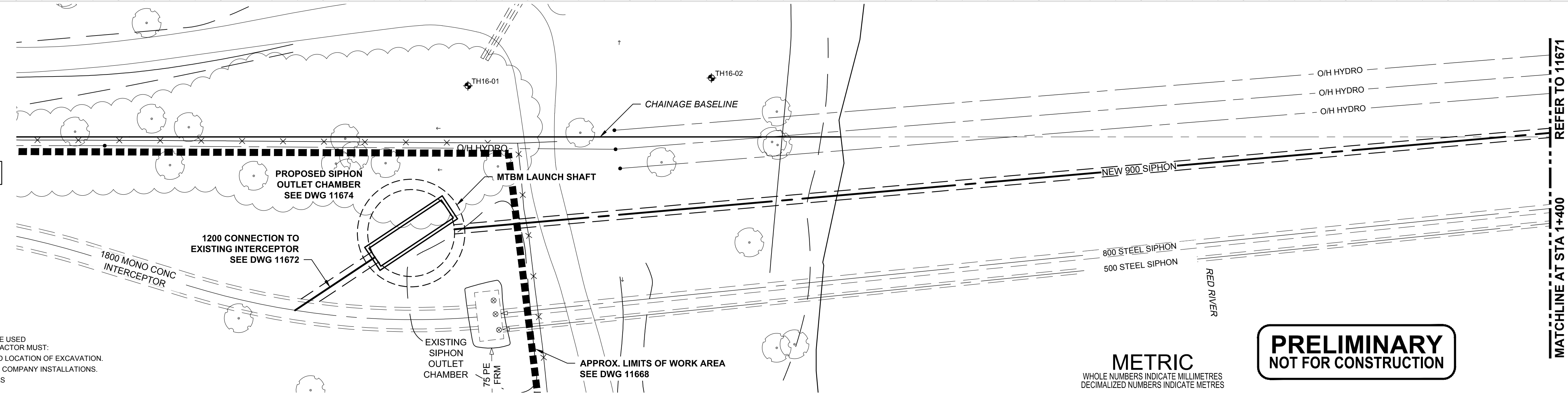
D SIZE 22" x 34" (559mm x 864mm)

PLOT: 2/6/2018 4:20:03 PM

AECOM REVIEW DRFT CHK AECOM FILE NAME: 60509089-SHT-30-000-C-1002_C-1003.dwg Saved By: cooperkrl



CHAINAGE BASELINE ALONG
S PL CHIEF PEGUIS TRAIL
STA 1+000 = SE PL MAIN STREET



- NOTES**
- CONTRACTOR TO FIELD VERIFY LOCATION OF THE EXISTING INTERCEPTOR SEWER PRIOR TO SHAFT CONSTRUCTION AND COMMENCEMENT OF TIE-IN WORKS

WARNING
IF POWER EQUIPMENT OR EXPLOSIVES ARE TO BE USED FOR EXCAVATION ON THIS PROJECT, THE CONTRACTOR MUST:
1) NOTIFY THE GAS COMPANY OF THE PROPOSED LOCATION OF EXCAVATION.
2) TAKE PRECAUTION TO AVOID DAMAGE TO GAS COMPANY INSTALLATIONS.
SEE PROVINCIAL REGULATION 140/92 FOR DETAILS

**PRELIMINARY
NOT FOR CONSTRUCTION**

METRIC
WHOLE NUMBERS INDICATE MILLIMETRES
DECIMALIZED NUMBERS INDICATE METRES

BID OPPORTUNITY NO.
1136-2017B

150 WM	WATERMAIN	150 WM	150 WM	CURB STOP	150 WM	WATERMAIN	150 WM
	HYDRANT			REDUCER		HYDRANT	
	VALVE			COUPLING		VALVE	
	LAND DRAINAGE SEWER			ANODE		LAND DRAINAGE SEWER	
	WASTE WATER SEWER			HYDRO		WASTE WATER SEWER	
	MANHOLE			MTS		PAVEMENT CROWN	
	CATCH BASIN			GAS		S/E PROPERTY LINE	
	CURB INLET			TESTHOLE		S/E GUTTER	
	CULVERT			LAMP STANDARD		TREE	
	PIPE ABANDONMENTS			TREE			
	SURVEY BAR						
	EXISTING		NEW	LEGEND - PLAN		EXISTING	LEGEND - PROFILE
						NEW	

LOCATION APPROVED
UNDERGROUND STRUCTURES

SUPR. U/G STRUCTURES DATE COMMITTEE

NOTE:
LOCATION OF UNDERGROUND STRUCTURES AS SHOWN ARE BASED ON THE BEST INFORMATION AVAILABLE. BUT NO GUARANTEE IS GIVEN THAT ALL EXISTING UTILITIES ARE SHOWN OR THAT THE GIVEN LOCATIONS ARE EXACT. CONFIRMATION OF EXISTENCE AND EXACT LOCATION OF ALL SERVICES MUST BE OBTAINED FROM THE INDIVIDUAL UTILITIES BEFORE PROCEEDING WITH CONSTRUCTION.

NO.	REVISIONS	DATE	BY
B	ISSUED FOR 50% REVIEW	18/02/05	KLC
A	ISSUED FOR 33% REVIEW	17/12/01	KLC

AECOM

DESIGNED BY: ADB
CHECKED BY:
DRAWN BY: ADL/KLC
APPROVED BY:
HOR. SCALE: 1:250
VERT. SCALE: 1:100
DATE:
RELEASED FOR CONSTRUCTION
DATE:

PROFESSIONAL'S SEAL
CONSULTANT DRAWING NO.
60509089-SHT-30-000-C-1002_C-1003

THE CITY OF WINNIPEG
WATER AND WASTE DEPARTMENT

**NORTHEAST INTERCEPTOR SEWER
RIVER CROSSING**

PLAN/PROFILE - MICROTUNNELLING
250m EAST OF MAIN STREET
TO MATCHLINE 1+400

SHEET 03 OF 09
CITY DRAWING NUMBER
11670
REV B