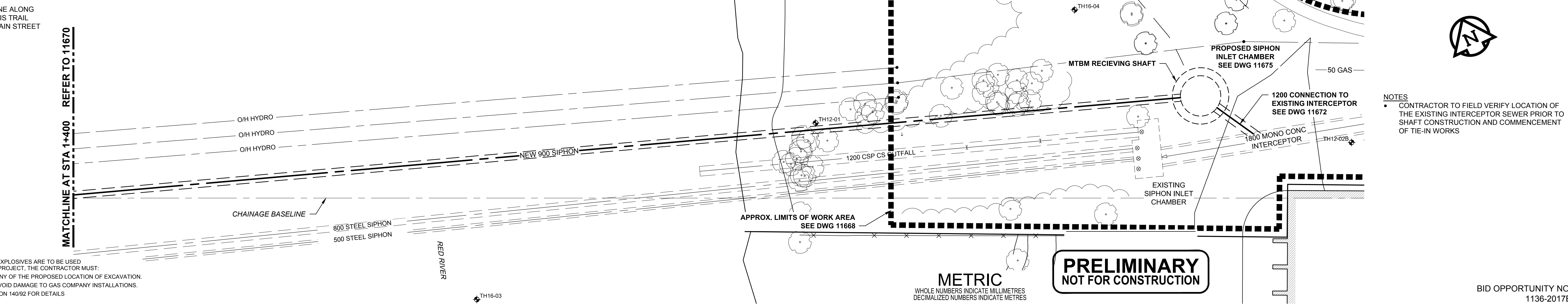
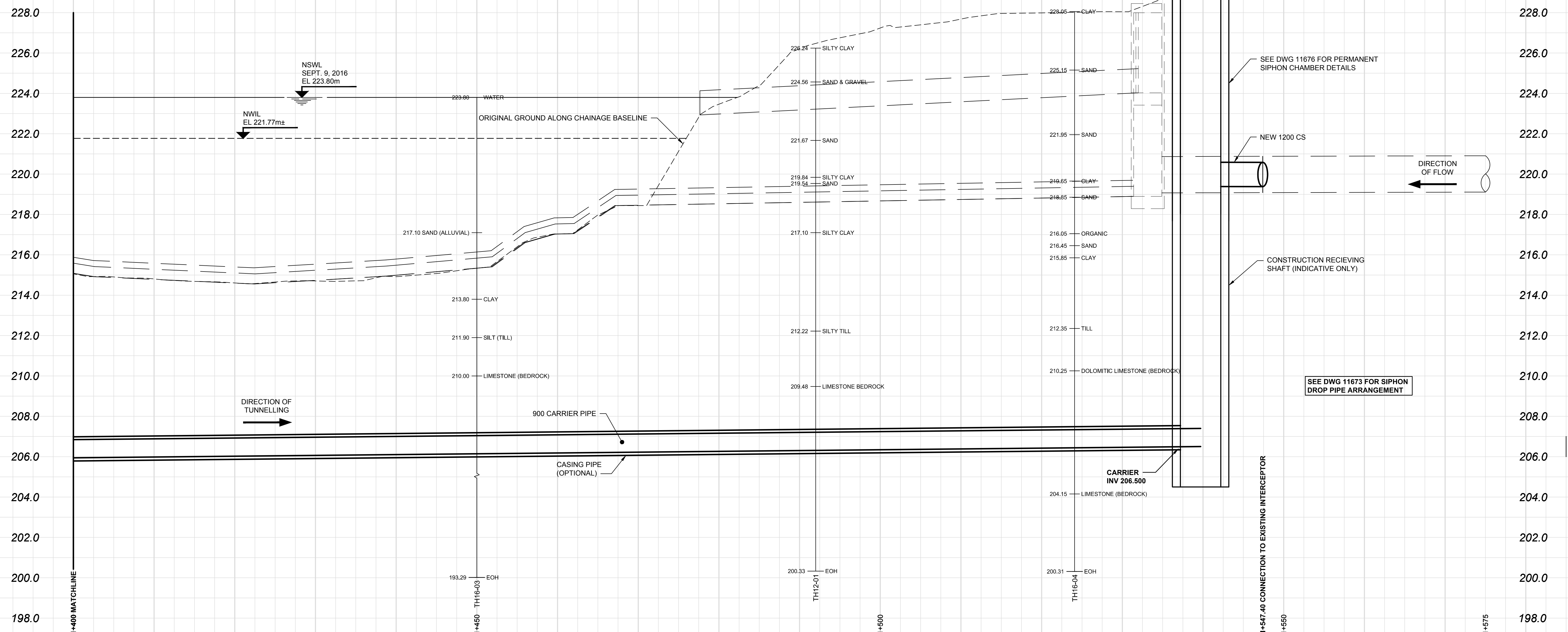


D SIZE 22" x 34" (559mm x 864mm)

PLOT: 2/6/2018 4:21:27 PM

AECOM REVIEW DRFT CHK  
AECOM FILE NAME: 6050989-SHT-30-000-C-1002\_C-1003.dwg Saved By: cooperkrl



**WARNING**  
IF POWER EQUIPMENT OR EXPLOSIVES ARE TO BE USED FOR EXCAVATION ON THIS PROJECT, THE CONTRACTOR MUST:  
1) NOTIFY THE GAS COMPANY OF THE PROPOSED LOCATION OF EXCAVATION.  
2) TAKE PRECAUTION TO AVOID DAMAGE TO GAS COMPANY INSTALLATIONS.  
SEE PROVINCIAL REGULATION 140/92 FOR DETAILS.

**NOTES**  
• CONTRACTOR TO FIELD VERIFY LOCATION OF THE EXISTING INTERCEPTOR SEWER PRIOR TO SHAFT CONSTRUCTION AND COMMENCEMENT OF TIE-IN WORKS

**PRELIMINARY  
NOT FOR CONSTRUCTION**

150 WM	WATERMAIN	150 WM	NEW	EXISTING	LEGEND - PLAN	NEW	EXISTING	LEGEND - PROFILE	NEW	EXISTING	LEGEND - PROFILE
⊕	HYDRANT	⊕	+	+		+	+		+	+	
⊗	VALVE	⊗	X	X		X	X		X	X	
⊙	300 LDS LAND DRAINAGE SEWER	⊙	⊙	⊙		⊙	⊙		⊙	⊙	
⊚	250 WWS WASTE WATER SEWER	⊚	⊚	⊚		⊚	⊚		⊚	⊚	
○	MANHOLE	○	○	○		○	○		○	○	
□	CATCH BASIN	□	□	□		□	□		□	□	
△	CURB INLET	△	△	△		△	△		△	△	
▭	CULVERT	▭	▭	▭		▭	▭		▭	▭	
—	PIPE ABANDONMENTS	—	—	—		—	—		—	—	
+	SURVEY BAR	+	+	+		+	+		+	+	
—	EXISTING	—	NEW	EXISTING		NEW	EXISTING		NEW	EXISTING	

**LOCATION APPROVED**  
UNDERGROUND STRUCTURES  
SUPR. U/G STRUCTURES DATE COMMITTEE  
**NOTE:**  
LOCATION OF UNDERGROUND STRUCTURES AS SHOWN ARE BASED ON THE BEST INFORMATION AVAILABLE. BUT NO GUARANTEE IS GIVEN THAT ALL EXISTING UTILITIES ARE SHOWN OR THAT THE GIVEN LOCATIONS ARE EXACT. CONFIRMATION OF EXISTENCE AND EXACT LOCATION OF ALL SERVICES MUST BE OBTAINED FROM THE INDIVIDUAL UTILITIES BEFORE PROCEEDING WITH CONSTRUCTION.

NO.	REVISIONS	DATE	BY
B	ISSUED FOR 50% REVIEW	18/02/05	KLC
A	ISSUED FOR 33% REVIEW	17/12/01	KLC
		YY/MM/DD	

**AECOM**  
WHOLE NUMBERS INDICATE MILLIMETRES  
DECIMALIZED NUMBERS INDICATE METRES

DESIGNED BY	ADB	CHECKED BY	
DRAWN BY	ADL/KLC	APPROVED BY	
HOR. SCALE	1:250	RELEASED FOR CONSTRUCTION	
VERT. SCALE	1:100	DATE	

PROFESSIONAL'S SEAL  
CONSULTANT DRAWING NO.  
6050989-SHT-30-000-C-1002\_C-1003

**THE CITY OF WINNIPEG**  
WATER AND WASTE DEPARTMENT

**NORTHEAST INTERCEPTOR SEWER  
RIVER CROSSING**

PLAN/PROFILE - MICROTUNNELLING  
MATCHLINE 1+400 TO  
60m WEST OF TAMARIND DRIVE

SHEET 04 OF 09  
CITY DRAWING NUMBER  
**11671**

BID OPPORTUNITY NO.  
1136-2017B