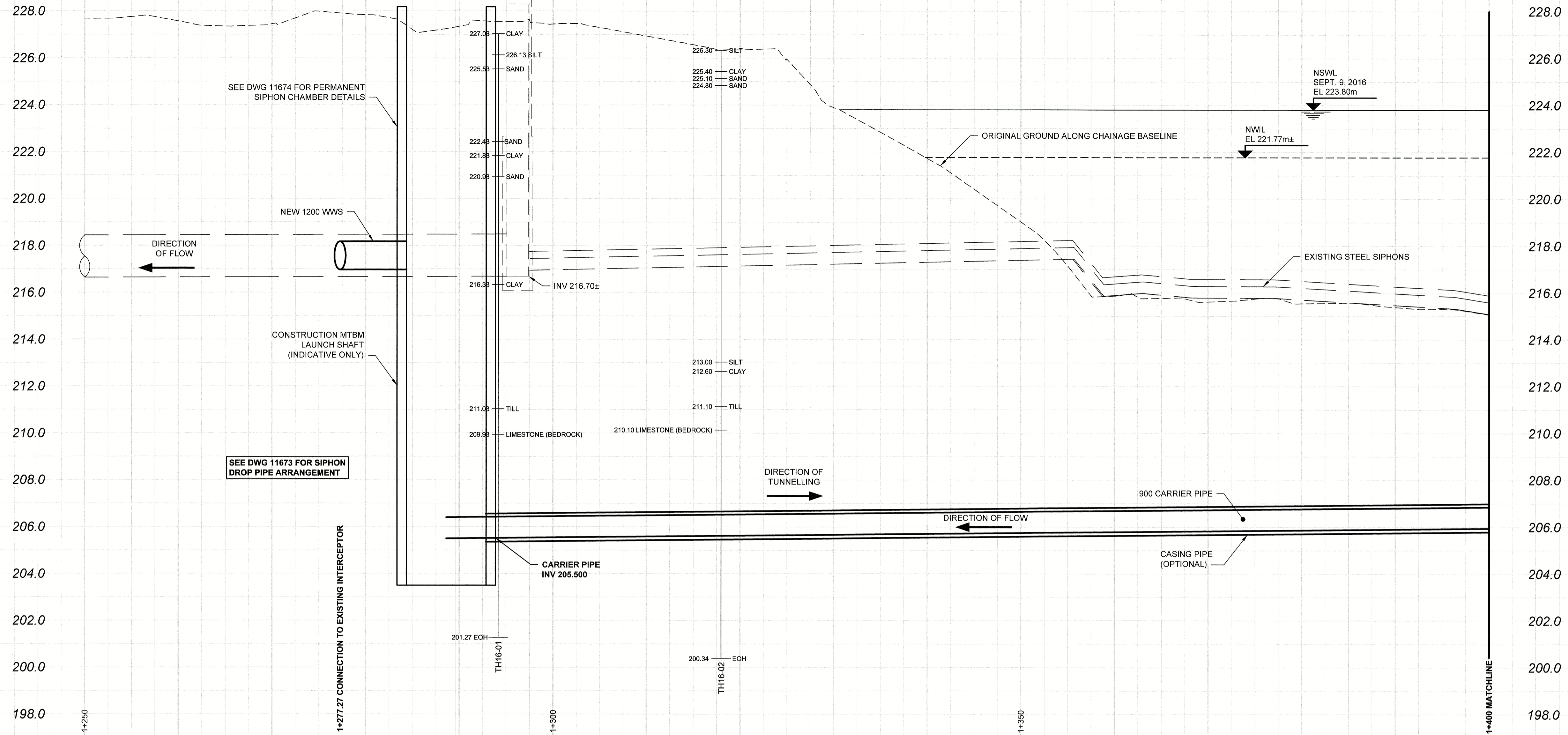


D SIZE 22" x 34" (558mm x 864mm)

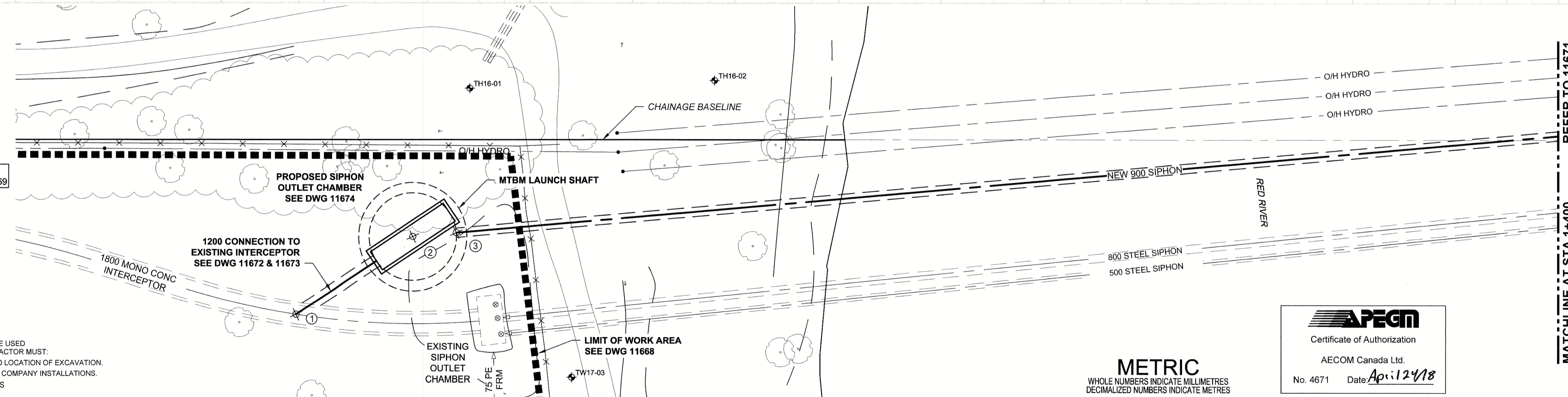
PLOT: 4/23/2018 9:31:39 PM

AECOM REVIEW DRAFT CHK  
AECOM FILE NAME: 60509089-SHT-30-0000-C-1002-C-1003.dwg Saved By: ccooperk



CHAINAGE BASELINE ALONG  
S PL CHIEF PEGUIS TRAIL  
STA 1+000 = SE PL MAIN STREET

FOR FURTHER INFO  
SEE DWG 11668 & 11669



Coordinate Table UTM Z14N City of Winnipeg 1990 Realization			
Point #	Description	Northing	Easting
1	POINT OF INTERSECTION OF TIE-IN	5534855.63	636337.52
2	CENTROID OF CHAMBER/SHAFT	5534857.63	636351.00
3	SIPHON ALIGNMENT	5534856.17	636354.99

**NOTES**  
• CONTRACTOR TO FIELD VERIFY LOCATION OF THE EXISTING INTERCEPTOR SEWER PRIOR TO SHAFT CONSTRUCTION AND COMMENCEMENT OF TIE-IN WORKS

**WARNING**  
IF POWER EQUIPMENT OR EXPLOSIVES ARE TO BE USED FOR EXCAVATION ON THIS PROJECT, THE CONTRACTOR MUST:  
1) NOTIFY THE GAS COMPANY OF THE PROPOSED LOCATION OF EXCAVATION.  
2) TAKE PRECAUTION TO AVOID DAMAGE TO GAS COMPANY INSTALLATIONS.  
SEE PROVINCIAL REGULATION 140/92 FOR DETAILS

150 WM WATERMAIN		150 WM		CURB STOP		150 WM WATERMAIN		150 WM		LOCATION APPROVED UNDERGROUND STRUCTURES	
⊙	HYDRANT	◆	150 WM	⊙	REDUCER	⊕	HYDRANT	⊕	150 WM	⊕	DATE
⊙	VALVE	◆	300 LDS	⊙	COUPLING	⊕	VALVE	⊕	300 LDS	⊕	DATE
⊙	LAND DRAINAGE SEWER	◆	250 WWS	⊙	ANODE	⊕	LAND DRAINAGE SEWER	⊕	250 WWS	⊕	DATE
⊙	WASTE WATER SEWER	◆	MANHOLE	⊙	HYDRO	⊕	WASTE WATER SEWER	⊕	250 WWS	⊕	DATE
○	MANHOLE	●	MTS	⊙	MTS	⊕	PAVEMENT CROWN	⊕	250 WWS	⊕	DATE
□	CATCH BASIN	■	GAS	⊙	GAS	⊕	N/W PROPERTY LINE	⊕	250 WWS	⊕	DATE
△	CURB INLET	▲	TESTHOLE	⊙	TESTHOLE	⊕	S/E PROPERTY LINE	⊕	250 WWS	⊕	DATE
▬▬▬	CULVERT	▬▬▬	LAMP STANDARD	⊙	LAMP STANDARD	⊕	N/W GUTTER	⊕	250 WWS	⊕	DATE
—	PIPE ABANDONMENTS	▬▬▬	TREE	⊙	TREE	⊕	S/E GUTTER	⊕	250 WWS	⊕	DATE
⊕	SURVEY BAR										
⊕	EXISTING	◆	NEW	⊕	EXISTING	◆	NEW				

**LOCATION APPROVED**  
UNDERGROUND STRUCTURES  
SUPR. U/G STRUCTURES COMMITTEE DATE  
NOTE:  
LOCATION OF UNDERGROUND STRUCTURES AS SHOWN ARE BASED ON THE BEST INFORMATION AVAILABLE. BUT NO GUARANTEE IS GIVEN THAT ALL EXISTING UTILITIES ARE SHOWN OR THAT THE GIVEN LOCATIONS ARE EXACT. CONFIRMATION OF EXISTENCE AND EXACT LOCATION OF ALL SERVICES MUST BE OBTAINED FROM THE INDIVIDUAL UTILITIES BEFORE PROCEEDING WITH CONSTRUCTION.

0	ISSUED FOR CONSTRUCTION	18/04/24	KLC
NO.	REVISIONS	YY/MM/DD	BY

DESIGNED BY	ADB	CHECKED BY	<i>[Signature]</i>
DRAWN BY	ADU/KLC	APPROVED BY	<i>[Signature]</i>
HOR. SCALE	1:250	RELEASED FOR CONSTRUCTION	<i>[Signature]</i>
VERT. SCALE	1:100	DATE	18/04/24

**AECOM**  
Certificate of Authorization  
AECOM Canada Ltd.  
No. 4671 Date: April 24/18

**THE CITY OF WINNIPEG**  
**WATER AND WASTE DEPARTMENT**  
NORTH EAST INTERCEPTOR SEWER  
RIVER CROSSING  
PLAN/PROFILE - MICROTUNNELLING  
250m EAST OF MAIN STREET  
TO MATCHLINE 1+400

PROFESSIONAL'S SEAL  
BRAUN  
Member  
24453  
APR 24 2018  
REGISTERED PROFESSIONAL ENGINEER

CONSULTANT DRAWING NO.  
60509089-SHT-30-0000-C-1002-C-1003

SHEET 03 OF 11  
CITY DRAWING NUMBER  
11670  
REV 0

BID OPPORTUNITY NO.  
1136-2017B