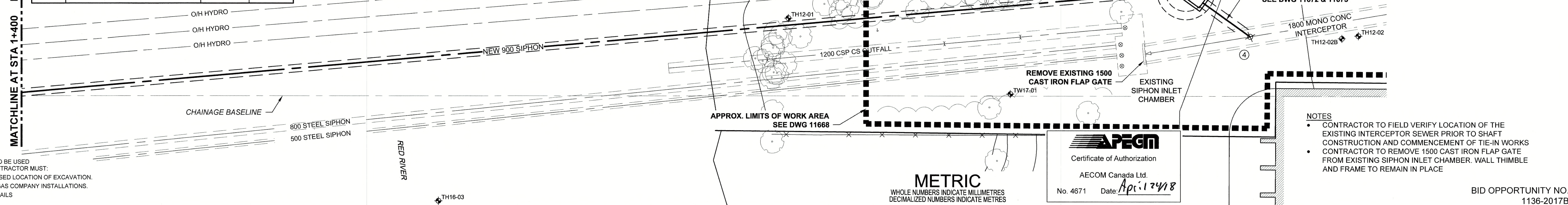


CHAINAGE BASELINE ALONG
S PL CHIEF PEGUIS TRAIL
STA 1+000 = SE PL MAIN STREET

**Coordinate Table
UTM Z14N City of Winnipeg
1990 Realization**

Point #	Description	Northing	Easting
4	POINT OF INTERSECTION OF TIE-IN	5534762.44	636592.21
5	CENTROID OF CHAMBER/SHAFT	5534770.74	636587.60
6	SIPHON ALIGNMENT	5534771.58	636585.25

REFER TO 11670
MATCHLINE AT STA 1+400



WARNING
IF POWER EQUIPMENT OR EXPLOSIVES ARE TO BE USED FOR EXCAVATION ON THIS PROJECT, THE CONTRACTOR MUST:
1) NOTIFY THE GAS COMPANY OF THE PROPOSED LOCATION OF EXCAVATION.
2) TAKE PRECAUTION TO AVOID DAMAGE TO GAS COMPANY INSTALLATIONS.
SEE PROVINCIAL REGULATION 140/92 FOR DETAILS

150 WM	WATERMAIN	150 WM	CURB STOP	150 WM	WATERMAIN	150 WM	LOCATION APPROVED
+	HYDRANT	+	REDUCER	+	HYDRANT	+	UNDERGROUND STRUCTURES
o	VALVE	o	COUPLING	+	VALVE	+	
300 LDS	LAND DRAINAGE SEWER	300 LDS	ANODE	+	LAND DRAINAGE SEWER	+	SUPR. U/G STRUCTURES COMMITTEE DATE
250 WWS	WASTE WATER SEWER	250 WWS	HYDRO	+	WASTE WATER SEWER	+	
o	MANHOLE	o	MTS	+	PAVEMENT CROWN	+	NOTE:
□	CATCH BASIN	□	GAS	+	N/W PROPERTY LINE	+	LOCATION OF UNDERGROUND STRUCTURES AS SHOWN ARE BASED ON THE BEST INFORMATION AVAILABLE. BUT NO GUARANTEE IS GIVEN THAT ALL EXISTING UTILITIES ARE SHOWN OR THAT THE GIVEN LOCATIONS ARE EXACT. CONFIRMATION OF EXISTENCE AND EXACT LOCATION OF ALL SERVICES MUST BE OBTAINED FROM THE INDIVIDUAL UTILITIES BEFORE PROCEEDING WITH CONSTRUCTION.
△	CURB INLET	△	TESTHOLE	+	S/E PROPERTY LINE	+	
—	CULVERT	—	LAMP STANDARD	+	N/W GUTTER	+	
+	PIPE ABANDONMENTS	+	TREE	+	S/E GUTTER	+	
+	SURVEY BAR	+		+		+	
—	EXISTING	—	LEGEND - PLAN	—	LEGEND - PROFILE	—	
+	NEW	+	LEGEND - PLAN	+	NEW	+	

LOCATION APPROVED
UNDERGROUND STRUCTURES
DATE
DATE

NO.	ISSUED FOR CONSTRUCTION	18/04/24	KLC
0	ISSUED FOR CONSTRUCTION	18/04/24	KLC
NO.	REVISIONS	YYMMDD	BY

AECOM
Certificate of Authorization
AECOM Canada Ltd.
No. 4671 Date: April 12, 2018

DESIGNED BY: ADB
CHECKED BY: [Signature]
DRAWN BY: ADU/KLC
APPROVED BY: [Signature]
HOR. SCALE: 1:250
VERT. SCALE: 1:100
RELEASED FOR CONSTRUCTION: [Signature]
DATE: [Signature]

PROFESSIONAL'S SEAL
BRAUN
Member
24453
REGISTERED PROFESSIONAL
CONSULTANT DRAWING NO.
60509089-SHT-30-0000-C-1002_C-1003

THE CITY OF WINNIPEG
WATER AND WASTE DEPARTMENT
NORTHEAST INTERCEPTOR SEWER
RIVER CROSSING
PLAN/PROFILE - MICROTUNNELLING
MATCHLINE 1+400 TO
60m WEST OF TAMARIND DRIVE

SHEET 04 OF 11
CITY DRAWING NUMBER
11671
REV 0

BID OPPORTUNITY NO. 1136-2017B